

# Vino Pins Design Kit 3 Layout

Recommended layout/specs for Vino Pins Design Kit (VPC-DESIGN-3)

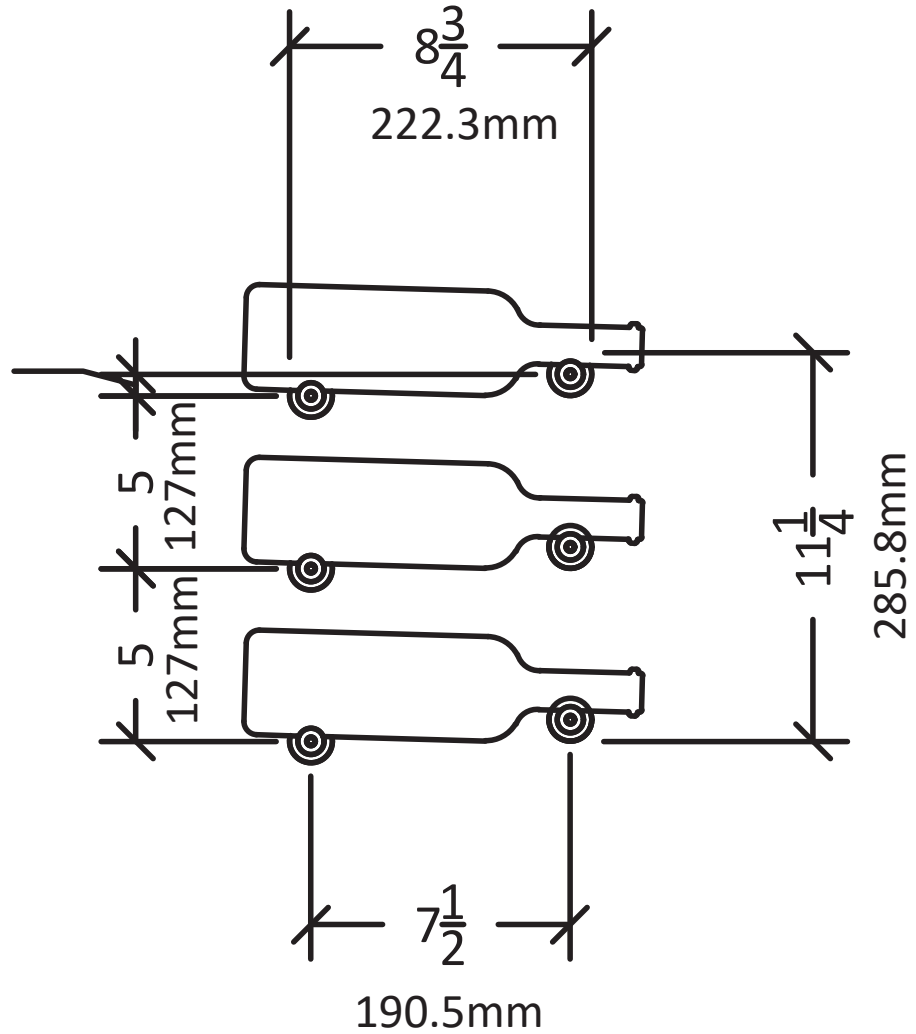


SCAN FOR **BILT**. 3D INSTRUCTIONS

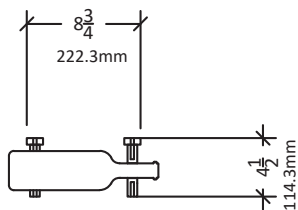


POWERED BY **BILT INTELLIGENT INSTRUCTIONS**®

$\frac{5}{8}$  TYP OFFSET  
15.9mm



Please **account for 13"**  
**in total width** with wine  
bottle stored.



VINTAGEVIEW®  
MOVING WINE STORAGE FORWARD