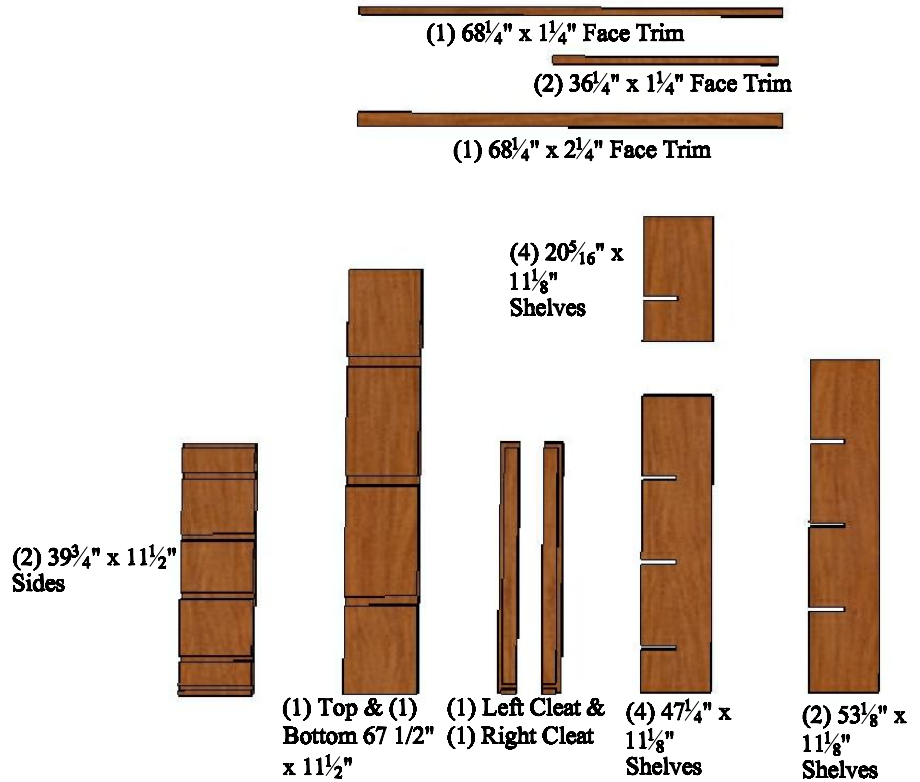


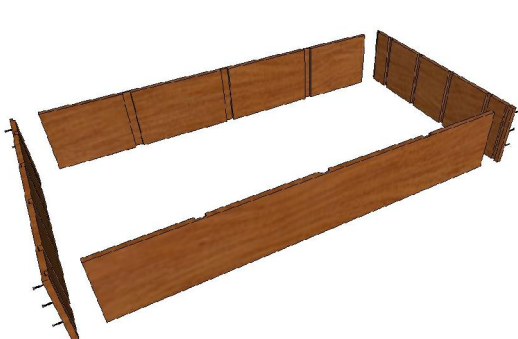
WineRacks.com
 Phone 888.687.2517
 Fax 845.658.5309

8_5-250-6825-3975

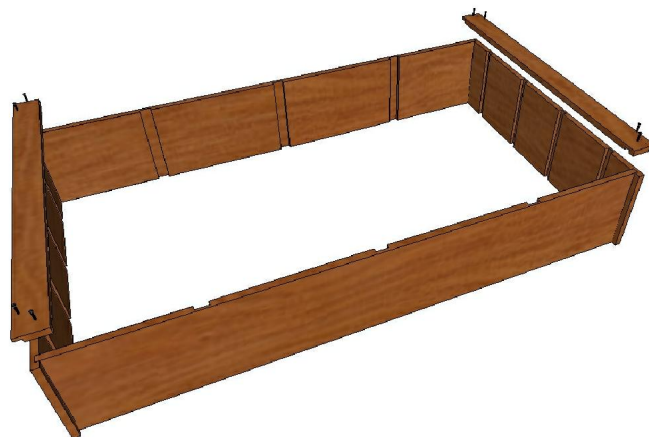
15 COLUMN COMPOUND DIAMOND BIN ASSEMBLY INSTRUCTIONS



PARTS LIST



STEP 1.
 ATTACH (2) SIDES TO THE (1)TOP & (1)BOTTOM w/ SCREWS. ENSURE SLOTS ON SIDES ALIGN.



STEP 2.
 ATTACH (1) LEFT & (1) RIGHT CLEAT w/ SCREWS

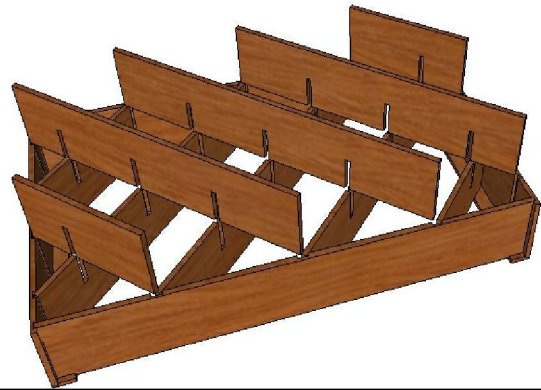
WineRacks.com
Phone 888.687.2517
Fax 845.658.5309

8_5-250-6825-3975

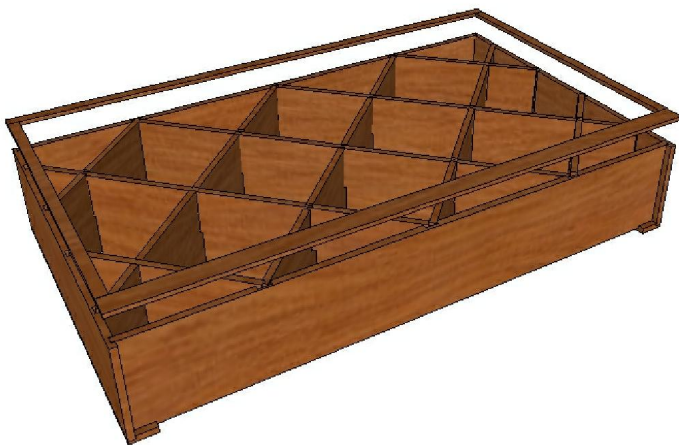
15 COLUMN COMPOUND DIAMOND BIN ASSEMBLY INSTRUCTIONS



STEP 3.
FLIP BIN OVER. SLIDE (2) SHORT
SHELVES, (2) MEDIUM LENGTH SHELVES
& (1) LONG SLELF INTO SLOTS AS SHOWN.
ENSURE SHELF NOTCHES FACE UP AND
ALIGN.



STEP 4.
SLIDE (2) SHORT SHELVES, (2) MEDIUM
LENGTH SHELVES & (1) LONG SLELF INTO
SLOTS AS SHOWN. ENSURE SHELF
NOTCHES FACE DOWN AND ALIGN.



STEP 5.
ATTACH (1) 2¼" x 68¼" FACE TRIM TO
BOTTOM OF BIN, (1) 1¼" X 68¼" FACE
TRIM TO TOP & (1ea.) 1¼" X 34¼" FACE
TRIM TO EACH SUDE OF BIN w/ FINISH
NAILS.