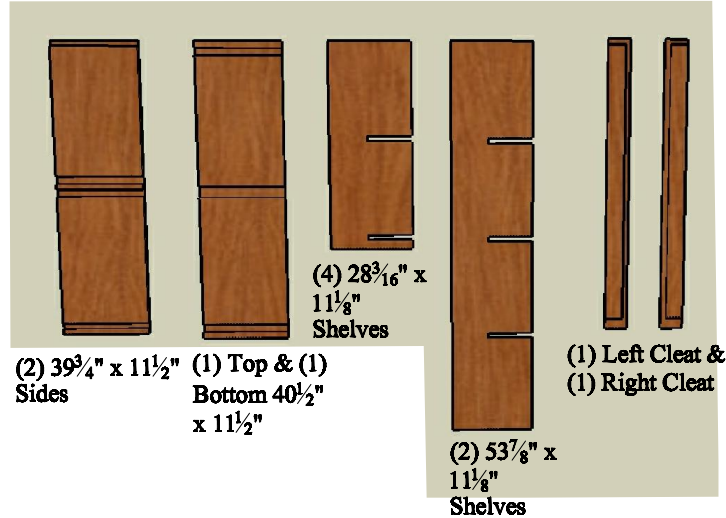
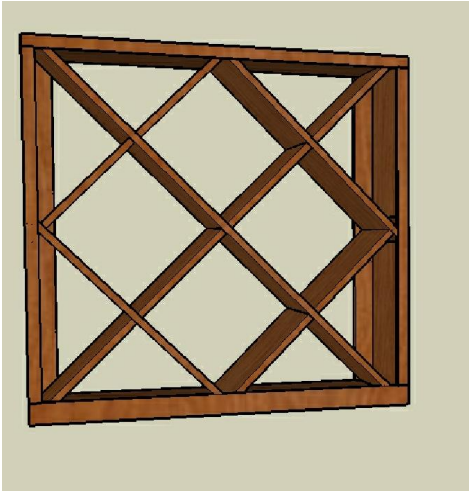


WineRacks.com
Phone 888.687.2517
Fax 845.658.5309

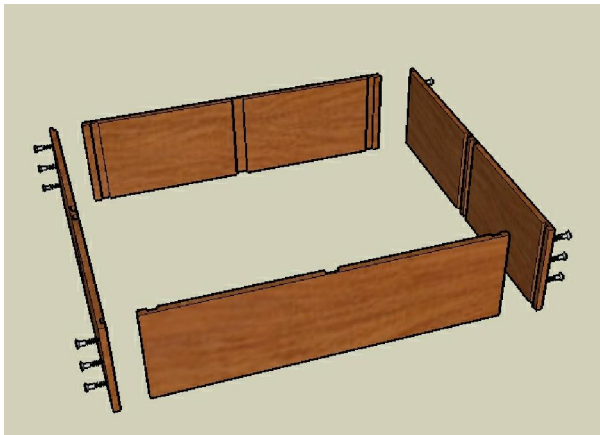
8_5-250-4125-3975

9 COLUMN COMPOUND DIAMOND BIN ASSEMBLY INSTRUCTIONS

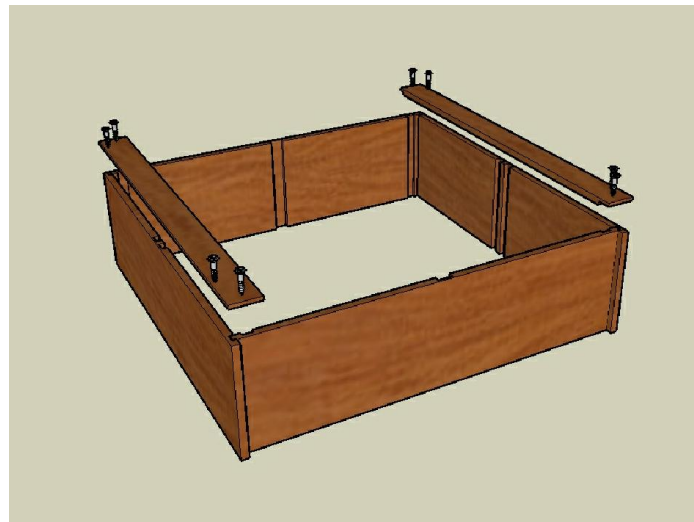


- (1) 41¹/₄" x 1¹/₄" Face Trim
- (1) 41¹/₄" x 2¹/₄" Face Trim
- (2) 36¹/₄" x 1¹/₄" Face Trim

PARTS LIST



STEP 1.
ATTACH (2) SIDES TO THE TOP & BOTTOM
w/ SCREWS. ENSURE SLOTS ON SIDES
ALIGN.

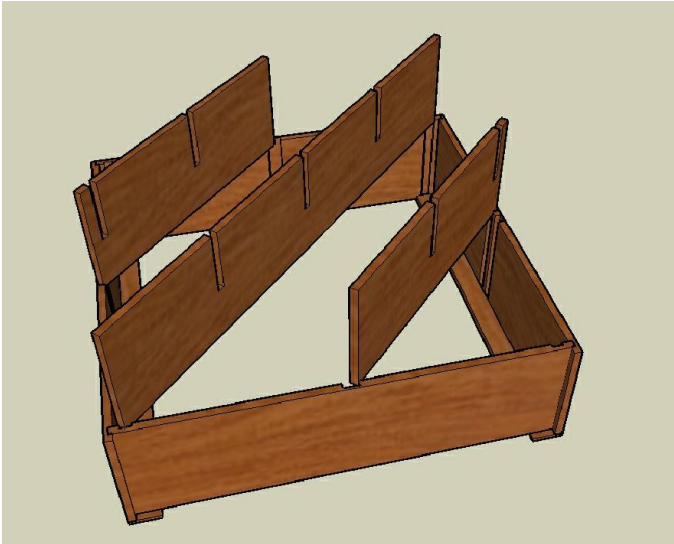


STEP 2.
ATTACH (1) LEFT & (1) RIGHT CLEAT w/
SCREWS

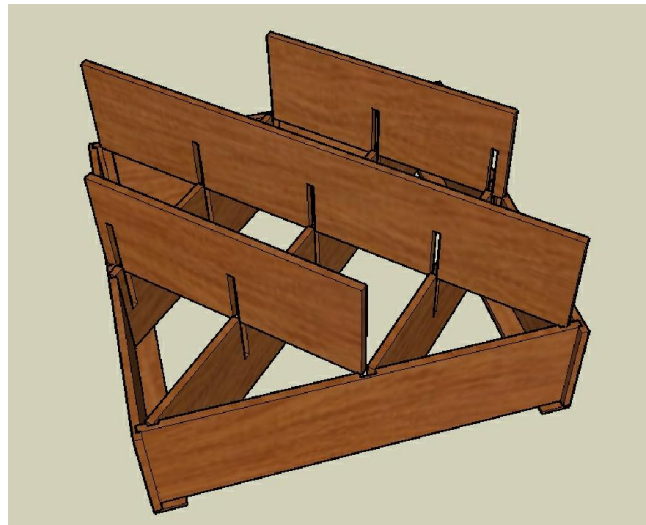
WineRacks.com
Phone 888.687.2517
Fax 845.658.5309

8_5-250-4125-3975

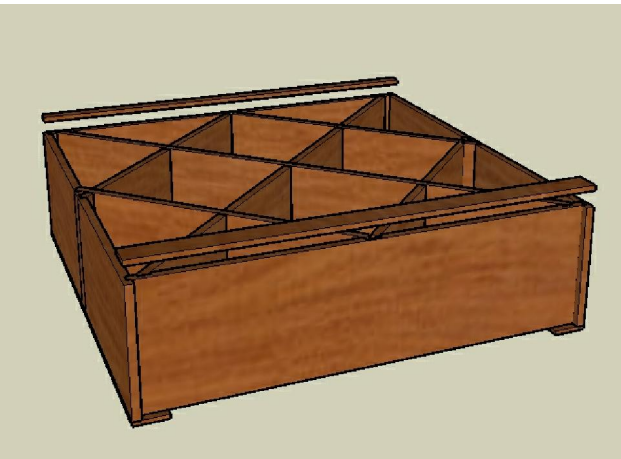
9 COLUMN COMPOUND DIAMOND BIN ASSEMBLY INSTRUCTIONS



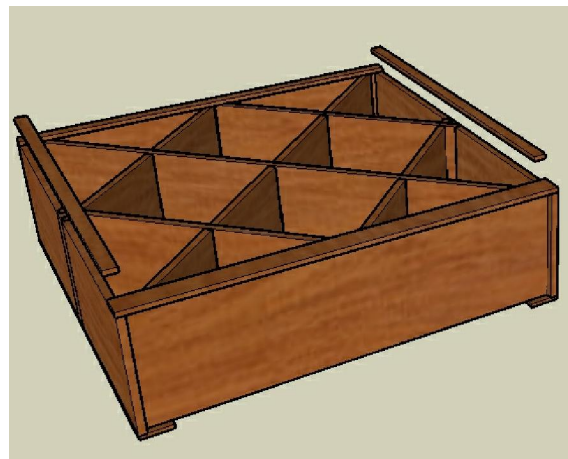
STEP 3.
FLIP BIN OVER. SLIDE (2) SHORT SHELVES
& (1) LONG SLELF INTO SLOTS AS SHOWN.
ENSURE SHELF NOTCHES FACE UP AND
ALIGN.



STEP 4.
SLIDE (2) SHORT SHELVES & (1) LONG
SLELF INTO SLOTS AS SHOWN. ENSURE
SHELF NOTCHES FACE DOWN.



STEP 5.
ATTACH (1) 2 $\frac{1}{4}$ " x 41 $\frac{1}{4}$ " FACE TRIM TO
BOTTOM OF BIN, (1) 1 $\frac{1}{4}$ " X 41 $\frac{1}{4}$ " FACE
TRIM TO TOP OF BIN w/ FINISH NAILS.



STEP 6.
ATTACH (2) 1 $\frac{1}{4}$ " x 36 $\frac{1}{4}$ " FACE TRIM TO
SIDES OF BIN w/ FINISH NAILS. STAND
UPRIGHT