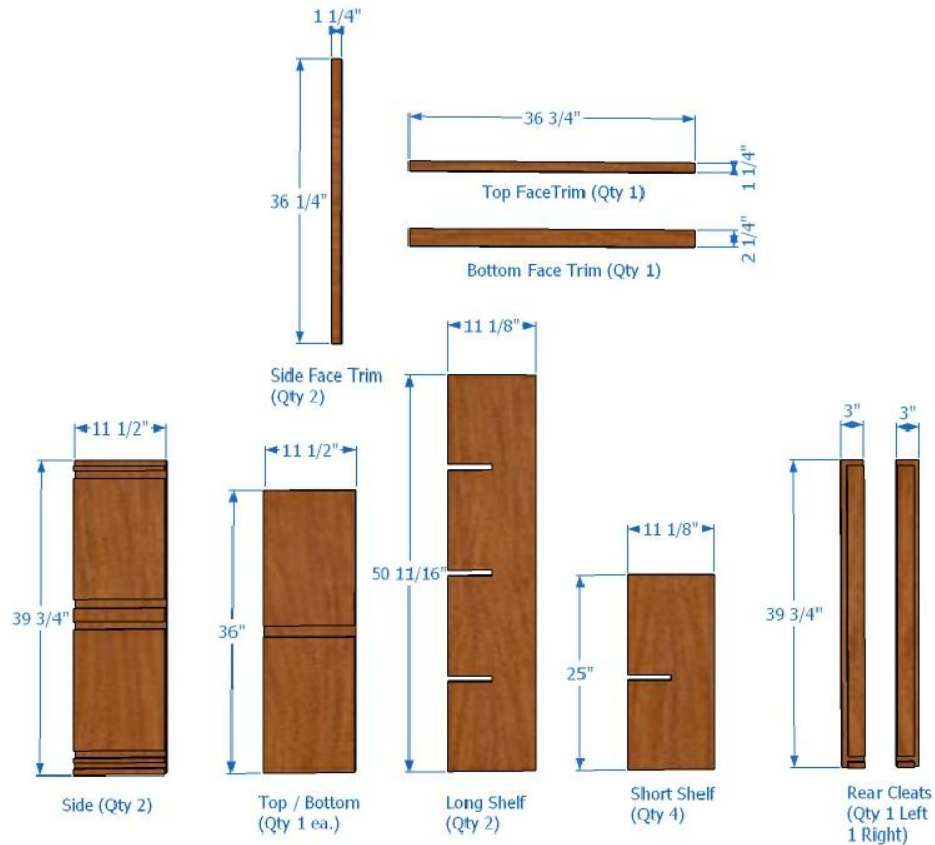


WineRacks.com
Phone 888.687.2517
Fax 845.658.5309

8_5-250-3675-3975

8 COLUMN COMPOUND DIAMOND BIN ASSEMBLY INSTRUCTIONS



PARTS LIST



STEP 1.
ATTACH (2) SIDES TO THE (1)TOP &
(1)BOTTOM w/ SCREWS. ENSURE SLOTS
ON ALL PIECES ALIGN WITH OPPOSITE
COMPONENT.



STEP 2.
ATTACH (1) LEFT & (1) RIGHT CLEAT w/
SCREWS

WineRacks.com
Phone 888.687.2517
Fax 845.658.5309

8_5-250-3675-3975 8 COLUMN COMPOUND DIAMOND BIN ASSEMBLY INSTRUCTIONS



STEP 3.
FLIP BIN OVER. SLIDE (2) SHORT SHELVES
& (1) LONG SLELF INTO SLOTS AS SHOWN.
ENSURE SHELF NOTCHES FACE UP AND
ALIGN.



STEP 4.
SLIDE (2) SHORT SHELVES & (1) LONG
SLELF INTO SLOTS AS SHOWN. ENSURE
SHELF NOTCHES FACE DOWN AND
ALIGN.



STEP 5.
ATTACH (1) 2 $\frac{1}{4}$ " x 36 $\frac{3}{4}$ " FACE TRIM TO
BOTTOM OF BIN, (1) 1 $\frac{1}{4}$ " X 36 $\frac{3}{4}$ " FACE
TRIM TO TOP & (1ea.) 1 $\frac{1}{4}$ " X 36 $\frac{1}{4}$ " FACE
TRIM TO EACH SIDE OF BIN w/ FINISH
NAILS. STAND UPRIGHT



STEP 6.
COMPLETED BIN