

# Reeling Drum Accessories

The items shown in this section represent the most popular accessories for use with the complete range of cable reeling drums promoted by SIMBAL, there are many other products available to complement the reeling drum range. If you need any help or advice in selecting the correct solution, please contact our sales office.



## Small 'Light Duty' Roller Guides



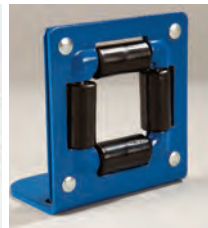
932 Roller



951/954/955 Roller Guide



945 Roller Guide



Type T Roller Guides

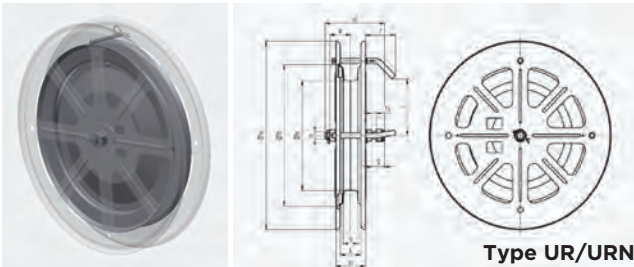


Type C Cable Stoppers

## Heavy Duty Roller Guides

### Type URN

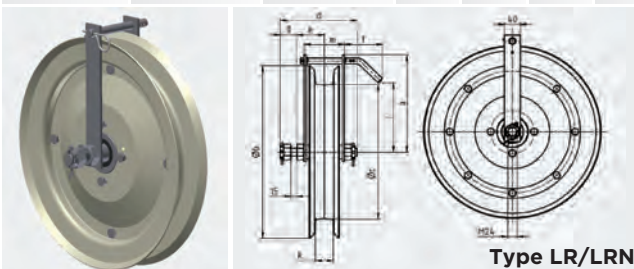
Type	Drg No.	Weight (kg)	Dia a	Dia b	Dia c	d	e	f	g	h	j	k	l	m
URN 350	13-30-01-001	23	600	450	350	195	60	99	42	M20	180	50	58	98
URN 500	13-32-00-001	42	800	650	530	240	84	85	57	M30	280	50	82	112
URN 660	13-33-00-001	52	900	780	660	240	86	75	55	M30	344	70	90	120



Type UR/URN

### Type LRN

Type	Drg No.	Weight (kg)	a	Dia b	Dia c	d	e	f	g	h	j	k	l	m
LRN 350	13-30-00-001	16	253	450	350	183	70	97	45	M24	180	45	-	105
LRN 500	13-32-01-001	42	360	650	530	240	82	88	59	M30	280	50	-	116

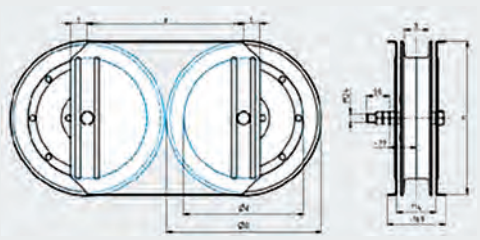


Type LR/LRN

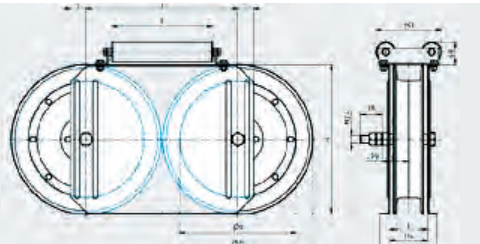
# Reeling Drum Accessories

## Type UD/UDQ Roller Guides

Type	Drg No.	Type	Drg No.	Max. cable dia mm	a	b	c	Dia d	Dia D	n	p
UD I	13-70-01-000	UDQ I	13-70-01-000	20mm	455	70	47.5	350	450	444	301
UD II	13-71-00-000	UDQ II	13-71-01-000	30mm	655	70	50	530	650	640	386
UD III	13-72-00-000	UDQ III	13-72-01-000	40mm	785	70	70	660	780	770	486



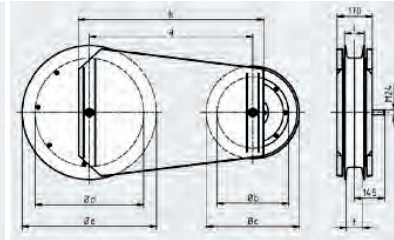
**Type UD Double deflector sheave** –  
for use with mono-spiral drum with centre feed funnel



**Type UDQ Double deflector sheave with cross rollers** –  
for use with cylindrical (multi-layered) drum with centre feed funnel

## Type L Roller Guides

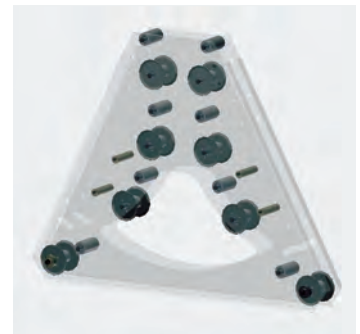
Type	Drg No.	Max. cable dia mm	a	Dia b	Dia c	Dia d	Dia e	f	k	l
L I	13-67-00-000	30mm	790	350	450	530	650	70	893	96
L II	13-68-00-000	40mm	860	350	450	660	770	70	943	97



## Reeling Drum Accessories

### Type RUT (without slack and tight cable control)

Type	Drg No.	Max. cable dia mm	Weight (kg)
RUT 450		40mm	285
RUT 860	13-95-00-000	60mm	320
RUT 1160	13-91-00-000	80mm	400



Type	Drg No.	Max. cable dia mm	Weight (kg)
RUTS 450		40mm	325
RUTS 860	13-96-00-000	60mm	360
RUTS 1160	13-92-00-000	80mm	450



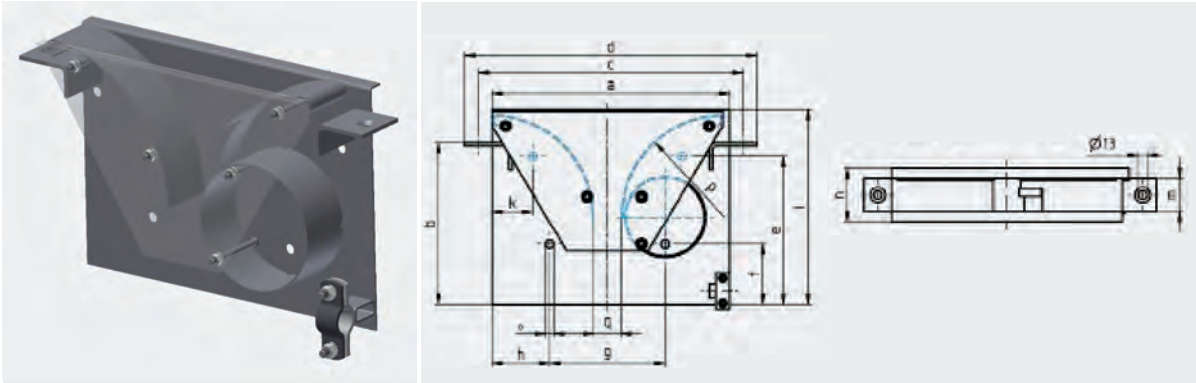
Type	Drg No.	Max. cable dia mm	Weight (kg)
RUTS 450 ST		40mm	350
RUTS 860 ST	13-97-00-000	60mm	390
RUTS 1160 ST	13-93-00-000	80mm	490



All roller guides with a control function can be equipped with non contact proximity switches or mechanical limit switches for this purpose. Switches can be operated with 15-250V AC or 15-30V DC.

# Reeling Drum Accessories

Type ULTV up to 1kv																		
Type	Max. cable dia	a mm	b mm	c mm	d mm	e mm	f mm	g mm	h mm	j mm	k mm	l mm	m mm	n mm	o mm	p mm	q mm	
ULTV I	20 mm	350	240	390	430	220	90	170	85	220	60	290	50	80	12.5	150	40	
ULTV II	22 mm	425	270	465	505	220	78	202	98	360	20	300	70	110	12.5	175	40	
ULTV III	30 mm	540	495	670	720	405	310	300	360	400	70	530	100	140	12.5	270	55	
ULTV IV	40 mm	820	650	920	970	550	200	400	210	740	40	700	140	180	16.5	400	80	
ULTV V	60 mm	1220	850	1290	1340	780	200	600	180	900	30	900	200	244	16.5	500	100	
ULTV VI	80 mm	1900	1200	1970	2020	1100	175	800	400	1700	100	1300	200	280	16.5	750	100	



## Type ULTV up to 24kV Turnover Anchor



### Type ULTV up to 24kV Turnover Anchor (for medium voltage cable up to 24Kv)

For details and dimensions please contact SIMBAL sales office on 01298 813882 or [sales@simbal.net](mailto:sales@simbal.net)

## Reeling Drum Accessories



### Type Ratchet (RA) (Retention 1 x per revolution)

With the ratchet a certain length of the cable can be secured as standard feature, with one retention per revolution. If desired, also several retention positions can be provided. The ratchet is attached to the flange, the segment piece is attached to the drum body housing.



Ratchet Type	Suitable Type Series
RA 155	LT 155
RA 180	LT 180
RA 220	LT 220
RA 221	LT 221
RA 222	LT 222
RA 300	LT 300
RA 301	LT 301
RA 420	LT 420
RA 421	LT 421
RA 530	LT 530

### Type Roller Yoke (R)

The swivelling roller yoke is installed at the flange. By the supporting of the roller yoke, uniform uncoiling and coiling of the cable is ensured and this prevents the cable from 'jumping' over the outer shield of the drum. The roller yoke is equipped with plastic rollers. This makes it possible to pay out the cable smoothly and laterally. The roller yoke can be swivelled upwards and downwards.



Roller Yoke Type	Suitable Type Series
R 155	LT 155
R 180	LT 180
R 220	LT 220
R 221	LT 221
R 222	LT 222
R 300	LT 300
R 301	LT 301
R 420	LT 420
R 421	LT 421
R 530	LT 530

### Type Eye Yoke (O)

The swivelling eye yoke is installed at the flange. By the supporting of the eye yoke, uniform uncoiling and coiling of the cable is ensured and this prevents the cable from 'jumping' over the outer shield of the drum. In contrast, application areas for this are in environments or plants where a high concentration of dirt particles prevails, or where it must be capable of being decontaminated. The eye yoke is made of a round steel rod and it can therefore not damage the cable.



Eye Yoke Type	Suitable Type Series
O 155	LT 155
O 180	LT 180
O 220	LT 220
O 221	LT 221
O 222	LT 222
O 300	LT 300
O 301	LT 301
O 420	LT 420
O 421	LT 421
O 530	LT 530

## Reeling Drum Accessories

### Type Rotating Ceiling Mounting Bracket (DrD)

The rotating ceiling mounting bracket has a swivelling range 300° with a stopper. It is suitable for mounting under the ceiling in, for example - workshops or automation, in order to cover a working area of max. 300°.



Rotating Ceiling Mounting Bracket Type	Suitable Type Series
DrD 155	LT 155
DrD 180	LT 180
DrD 220	LT 220
DrD 221	LT 221
DrD 222	LT 222
DrD 300	LT 300
DrD 301	LT 301
DrD 420	LT 420
DrD 421	LT 421
DrD 530	LT 530

### Type Rotating Wall Mounting Bracket (WA)

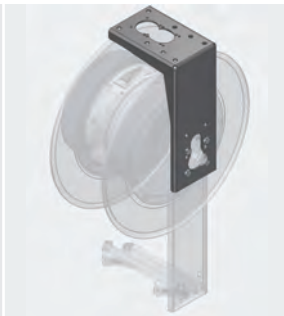
The rotating wall mounting bracket has a swivelling range of 150° with a stopper. It is suitable for wall mounting in workshops for example, in order to cover a working area of mx. 150°.



Rotating Wall Mounting Bracket Type	Suitable Type Series
WA 155	LT 155
WA 180	LT 180
WA 220	LT 220
WA 221	LT 221
WA 222	LT 222
WA 300	LT 300
WA 301	LT 301
WA 420	LT 420
WA 421	LT 421
WA 530	LT 530

### Type Fixed Mounting Bracket (STB)

The fixed mounting bracket for ceiling resp. ground erection is suitable for workshops or automation.



Fixed Mounting Bracket Type	Suitable Type Series
STB 155-180	LT 155-180
STB 220-301	LT 220-301
STB 420	LT 420
STB 421	LT 421
STB 530	LT 530