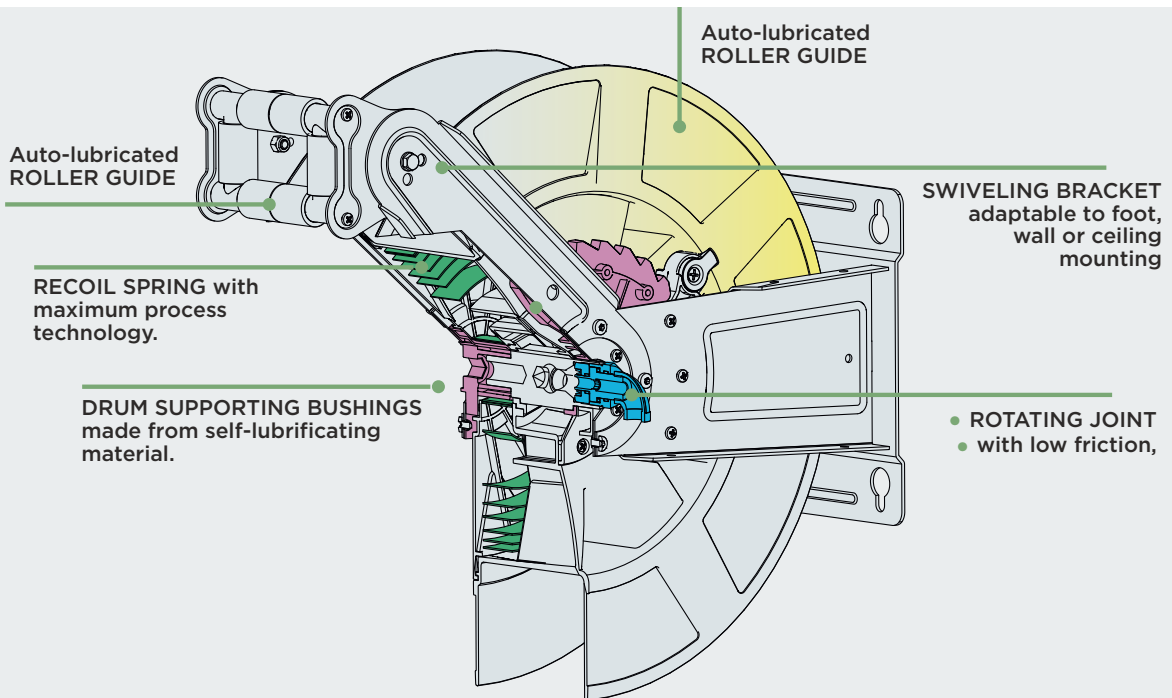


# Hose Reeling Drums

## Type 8400 Hose Reels

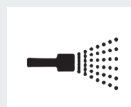
### Type 8400 Hose Reels



AIR



HOT WATER



HIGH  
PRESSURE  
WATER



OIL



DIESEL



AD BLUE

### Fields of Application



Refueling



Aeronautics



Military



Nautical



Mines



Construction



Agriculture



Chemical



Auto Repair  
Workshops



Industry



Car Wash



Industrial  
Cleaning



Big  
Kitchens

# Hose Reeling Drums

## Type 8400 Hose Reels

### Series 8400 - Full Stainless Steel



- Bracket in stainless steel AISI 304
- Rotating joint and incoming fitting in stainless steel

- End pipe fitting in stainless steel
- Screws and bolts in stainless steel

### Series 8400 - Light Stainless Steel



- Bracket in stainless steel AISI 304
- Rotating joint and incoming fitting in brass/steel/stainless steel

- End pipe fitting in brass/stainless steel
- Screws and bolts in stainless steel

### Series 8400 - Standard



- Bracket in steel, painted with epoxy resin powders
- Rotating joint and incoming fitting in brass/steel/stainless steel

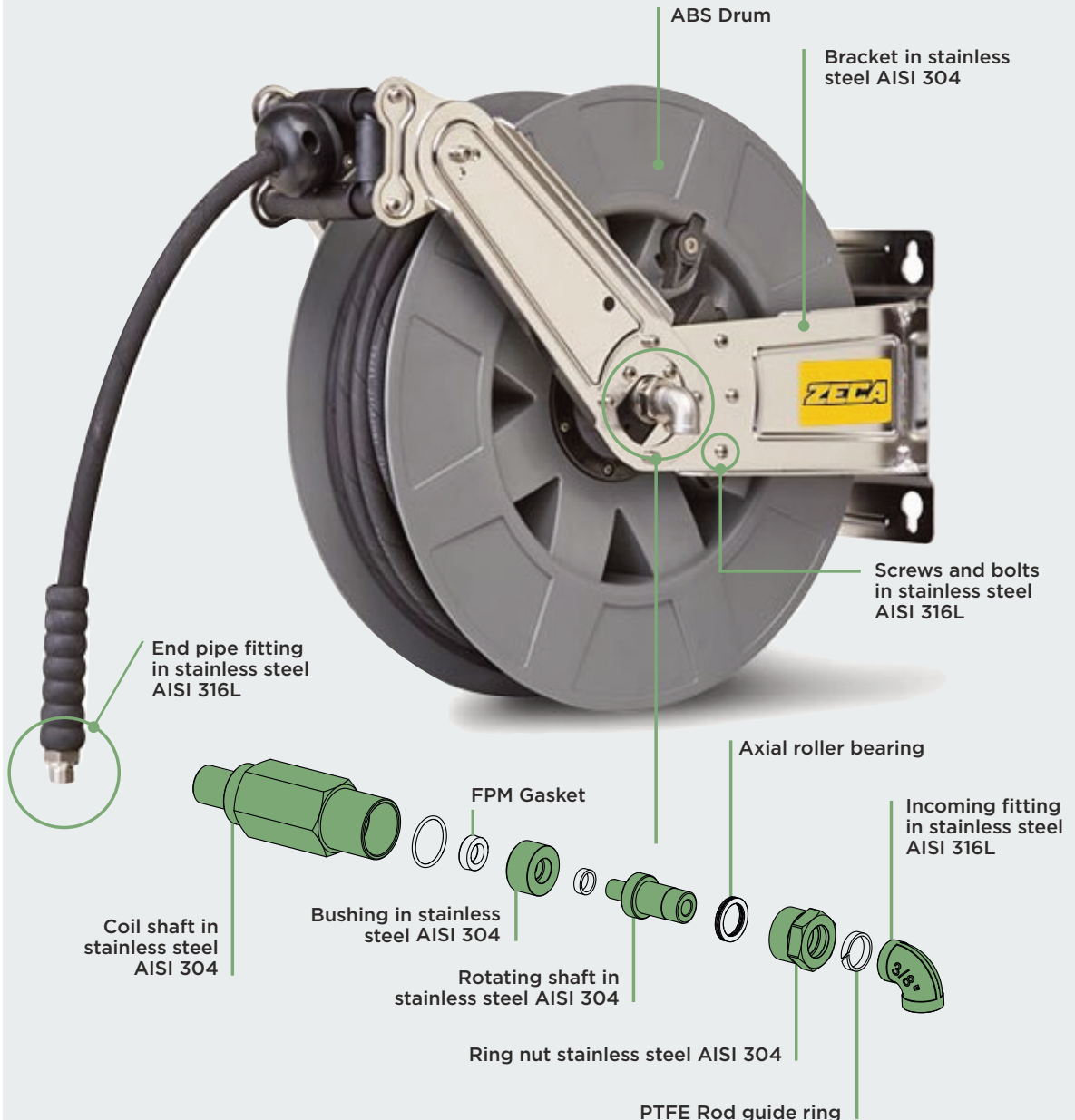
- End pipe fitting in brass/steel
- Screws and bolts in steel

# Hose Reeling Drums

## Type 8400 Hose Reels

### Series 8400 – Full Stainless Steel

The Full Stainless Steel hose reels are perfect for a variety of different applications, from the food and drink industry to the boating industry and the chemical sector, heavy duty work environments with corrosive atmosphere. They are also the ideal solution for industrial cleaning, blowing operations and transport of fluids such as oil and AdBlue.



ISO EN 12100



2006 / 42 / CE



14



mm 550x505x270  
Kg 10

# Hose Reeling Drums

## Type 8400 Hose Reels

### Series 8400 – Full Stainless Steel

| Technical Data       |                                    |                  |                 |           |                   |                   |                  |
|----------------------|------------------------------------|------------------|-----------------|-----------|-------------------|-------------------|------------------|
|                      | HOSE TYPE                          | HOSE Ø           | HOSE LENGTH (m) | TYPE      | FLUID TEMPERATURE | END PIPE FITTING  | INCOMING FITTING |
| AIR-WATER<br>20 bar  | No Hose                            | /                | /               | 8401/1113 | -15°C / +50°C     | 1/2" F            | 1/2" F           |
|                      | SAE 100R6                          | 10mm 3/8"        | 12              | 8404/1111 |                   | 3/8" M            |                  |
|                      |                                    |                  | 18              | 8406/1111 |                   |                   |                  |
|                      | KPU                                | 12.5mm 1/2"      | 15              | 8426/1111 |                   | 1/2" M            |                  |
|                      |                                    |                  | 20              | 8427/1111 |                   |                   |                  |
|                      | WATER<br>15 bar                    | PU-FOOD QUALITY* | 12.5mm 1/2"     | 12        |                   | 8432/1111         |                  |
| AD BLUE<br>15 bar    | PVC-PU                             | 19mm 3/4"        | 8               | 8482/1111 | -10°C / +60°C     | 3/4" F Swivelling | 3/4" M           |
| OIL-WATER<br>200 bar | No Hose                            | /                | /               | 8440/1113 | -15°C / +130°C    | 1/2" F            | 3/8" F           |
|                      | EN 857 1 SC<br>Black               | 10 mm 3/8"       | 15              | 8442/1111 |                   | 3/8" F Swivelling |                  |
|                      |                                    |                  | 18              | 8443/1111 |                   |                   |                  |
|                      | EN 857 1 SC<br>Blue<br>Non Marking |                  | 15              | 8446/1111 |                   |                   |                  |
|                      |                                    |                  | 18              | 8448/1111 |                   |                   |                  |

\* **NOTE:** REG. UE 1935/2004 AND REG. UE 10/2011 CERTIFIED HOSE FOR USE IN THE FOOD INDUSTRY. NOT SUITABLE FOR FOOD LIQUIDS TRANSFER.

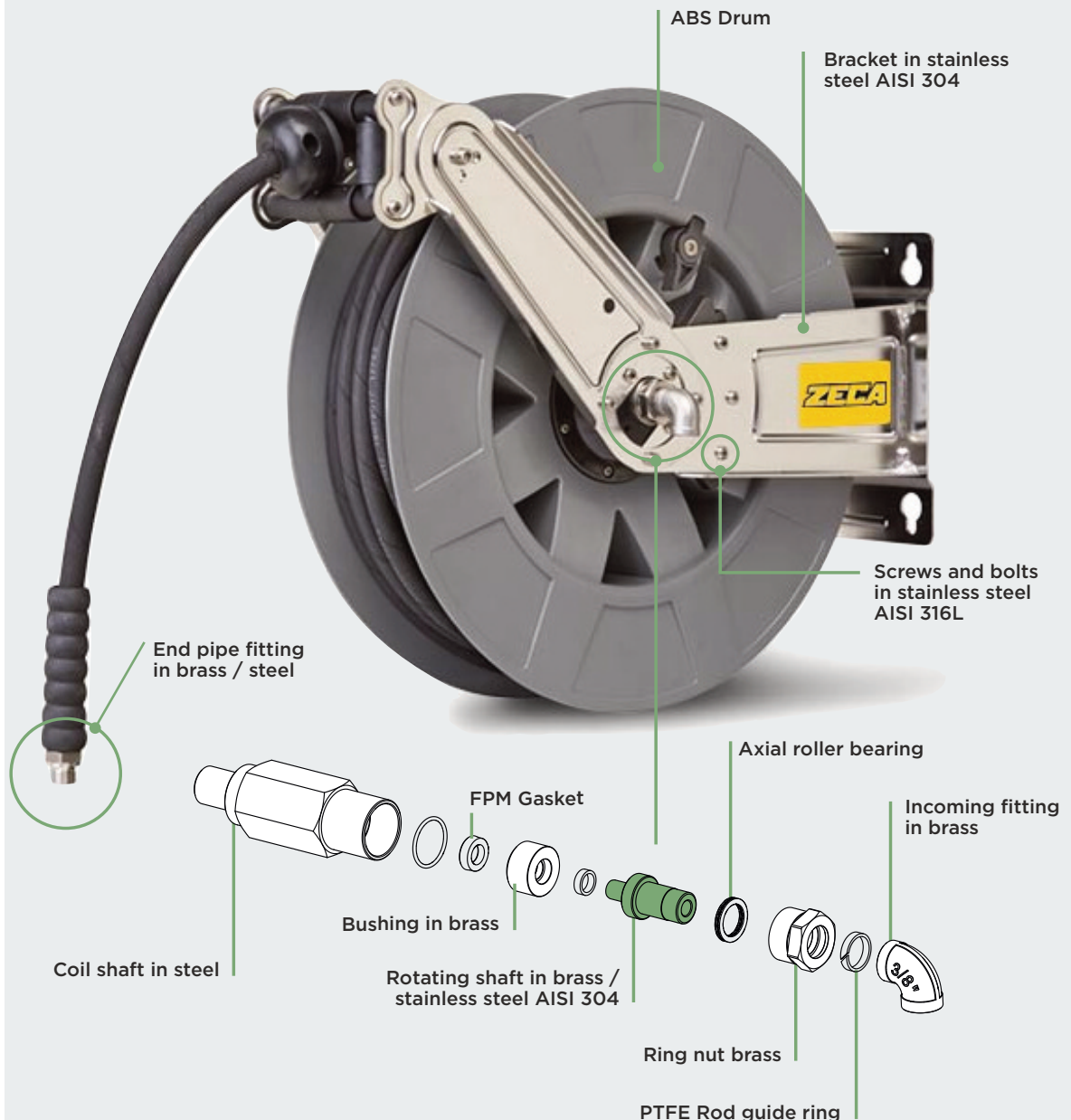






# Hose Reeling Drums

## Type 8400 Hose Reels

### Series 8400 - Light Stainless Steel

The Light Stainless Steel hose reels are perfect to a variety of applications, from the food and drink industry to the boating industry and the chemical sector, heavy duty work environments with corrosive atmosphere. They are the ideal for industrial cleaning, blowing operations and transports of fluids such as oil.



|   |   |                         |
|---|---|-------------------------|
| ISO EN 12100  |  | 14                      |
|   |  | mm 550x505x270<br>Kg 10 |
| 2006 /42 / CE   |   |                         |

# Hose Reeling Drums

## Type 8400 Hose Reels

### Series 8400 – Light Stainless Steel

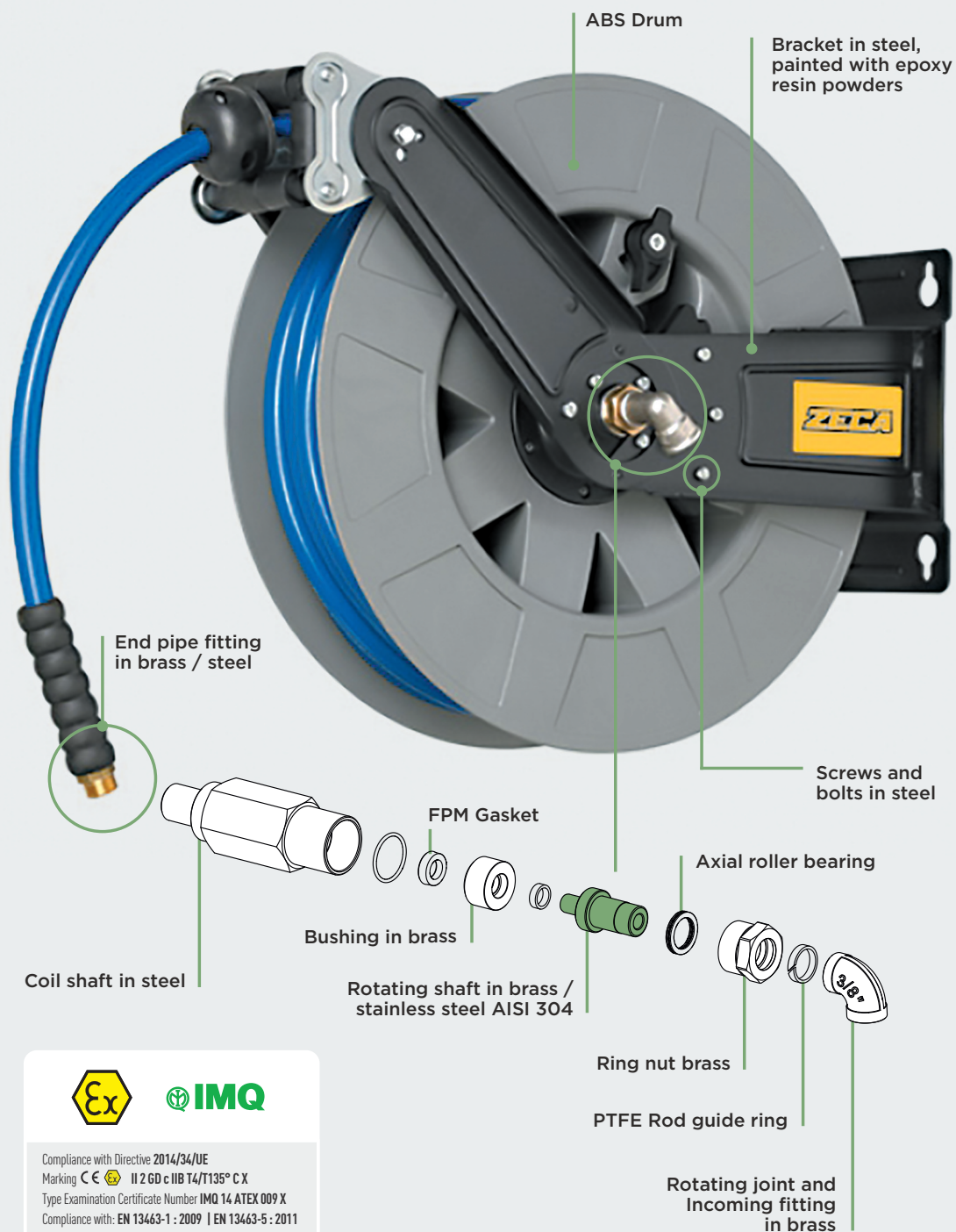
| Technical Data       |                                    |                |                 |           |                   |                      |                  |
|----------------------|------------------------------------|----------------|-----------------|-----------|-------------------|----------------------|------------------|
|                      | HOSE TYPE                          | HOSE Ø         | HOSE LENGTH (m) | TYPE      | FLUID TEMPERATURE | END PIPE FITTING     | INCOMING FITTING |
| AIR-WATER<br>20 bar  | No Hose                            | /              | /               | 8401/1003 | -15°C /<br>+50°C  | 1/2" F               | 1/2" F           |
|                      | SAE 100R6                          | 10mm<br>3/8"   | 12              | 8404/1000 |                   | 3/8" M               |                  |
|                      |                                    |                | 18              | 8406/1000 |                   |                      |                  |
|                      | KPU                                | 12.5mm<br>1/2" | 15              | 8426/1002 |                   | 1/2" M               |                  |
|                      |                                    |                | 20              | 8427/1002 |                   |                      |                  |
|                      |                                    |                |                 |           |                   |                      |                  |
| WATER<br>15 bar      | PU-FOOD QUALITY*                   | 12.5mm<br>1/2" | 12              | 8432/1001 | -10°C /<br>+60°C  |                      | 1/2" F           |
| OIL-WATER<br>200 bar | No Hose                            | /              | /               | 8440/1003 | -15°C /<br>+130°C | 1/2" F               | 3/8" F           |
|                      | EN 857 1 SC<br>Black               | 10 mm<br>3/8"  | 15              | 8442/1000 |                   | 3/8" F<br>Swivelling |                  |
|                      |                                    |                | 18              | 8443/1000 |                   |                      |                  |
|                      | EN 857 1 SC<br>Blue<br>Non Marking |                | 15              | 8446/1000 |                   |                      |                  |
|                      |                                    |                | 18              | 8448/1000 |                   |                      |                  |
|                      |                                    |                |                 |           |                   |                      |                  |

\* **NOTE:** REG. UE 1935/2004 AND REG. UE 10/2011 CERTIFIED HOSE FOR USE IN THE FOOD INDUSTRY. NOT SUITABLE FOR FOOD LIQUIDS TRANSFER.

# Hose Reeling Drums

## Type 8400 Hose Reels

### Series 8400 - Standard



Compliance with Directive 2014/34/EU  
 Marking **CE** II 2 GD c IIB T4/T135° C X  
 Type Examination Certificate Number **IMQ 14 ATEX 009 X**  
 Compliance with: **EN 13463-1 : 2009** | **EN 13463-5 : 2011**

ISO EN 12100



2006 / 42 / CE



14





mm 550x505x270  
Kg 10

# Hose Reeling Drums

## Type 8400 Hose Reels

### Series 8400 – Full Stainless Steel

| Technical Data        |                                    |             |                 |      |                 |                |   |                  |                   |  |
|-----------------------|------------------------------------|-------------|-----------------|------|-----------------|----------------|---|------------------|-------------------|--|
|                       | HOSE TYPE                          | HOSE Ø      | HOSE LENGTH (m) | TYPE |                 | FLUID TEMP.    | END PIPE FITTING  | INCOMING FITTING |                   |  |
| AIR-WATER<br>20 bar   | No hose                            | /           | /               | 8401 | /               | -15°C / +50°C  | 1/2" F  | 1/2" F           |                   |  |
|                       |                                    | /           | /               | 8480 | AISI 316L Joint |                |   |                  |                   |  |
|                       | SAE 100R6                          | 6mm 1/4"    | 20              | 8412 | /               |                |   |                  | 1/4" M            |  |
|                       |                                    | 8mm 5/16"   | 20              | 8402 | /               |                |   |                  |                   |  |
|                       |                                    | 10mm 3/8"   | 12              | 8404 |                 |                |   |                  | 3/8" M            |  |
|                       |                                    |             | 18              | 8406 |                 |                |   |                  |                   |  |
|                       |                                    | 12.5mm 1/2" | 10              | 8408 |                 |                |   |                  | 1/2" M            |  |
|                       |                                    |             | 15              | 8410 |                 |                |   |                  |                   |  |
|                       | KPU                                | 10mm 3/8"   | 20              | 8424 |                 |                | 3/8" M  |                  |                   |  |
|                       |                                    | 12.5mm 1/2" | 15              | 8426 |                 |                | 1/2" M  |                  |                   |  |
|                       |                                    |             | 20              | 8427 |                 |                |   |                  |                   |  |
| WATER<br>15 bar       | PU-FOOD QUALITY*                   | 12.5mm 1/2" | 12              | 8432 | /               | -10°C / +60°C  | 1/2" M  | 1/2" F           |                   |  |
| DIESEL-OIL<br>15 bar  | PVC-PU                             | 19mm 3/4"   | 8               | 8415 | /               | -10°C / +60°C  | 3/4" F swivelling   | 3/4" M           |                   |  |
| AD BLUE<br>15 bar     | PVC-PU                             | 19mm 3/4"   | 8               | 8482 | AISI 316L Joint | -10°C / +60°C  | 3/4" F swivelling   | 3/4" M           |                   |  |
| OIL<br>160 bar        | EN 857 1SC                         | 12.5mm 1/2" | 10              | 8474 | /               | -15°C / +120°C | 1/2" F swivelling   | 3/8" F           |                   |  |
| OIL-WATER<br>200 bar  | No hose                            | /           | /               | 8440 | /               | -15°C / +130°C | 1/2" F  |                  |                   |  |
|                       | EN 857 1SC <i>Black</i>            | 8mm 5/16"   | 20              | 8441 | /               |                |  |                  | 3/8" F swivelling |  |
|                       |                                    | 10mm 3/8"   | 15              | 8442 |                 |                |   |                  |                   |  |
|                       |                                    |             | 18              | 8443 |                 |                |   |                  |                   |  |
|                       | EN 857 1SC <i>Blue</i> Non Marking | 10mm 3/8"   | 15              | 8446 |                 |                |   |                  |                   |  |
|                       |                                    |             | 18              | 8448 |                 |                |   |                  |                   |  |
| OIL-GREASE<br>400 bar | No hose                            | /           | /               | 8401 | /               | -20°C / +120°C | 1/2" F  | 3/8" F           |                   |  |
|                       | EN 857 2SC                         | 6mm 1/4"    | 12              | 8401 | /               |                | 1/4" M  |                  |                   |  |
|                       |                                    |             | 18              | 8401 | /               |                |   |                  |                   |  |

\* **NOTE:** REG. UE 1935/2004 AND REG. UE 10/2011 CERTIFIED HOSE FOR USE IN THE FOOD INDUSTRY. NOT SUITABLE FOR FOOD LIQUIDS TRANSFER.

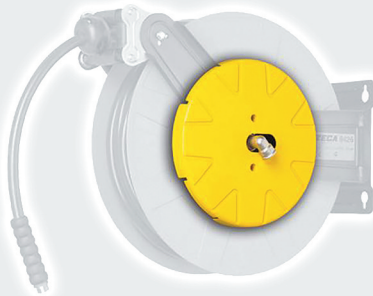


# Hose Reeling Drums

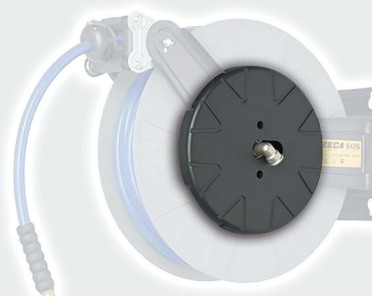
## Type 8400 Hose Reels

### Series 8400 - Options

#### Coil Cover

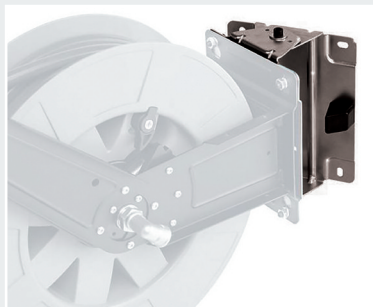


**8400 / CY**  
Yellow coil cover

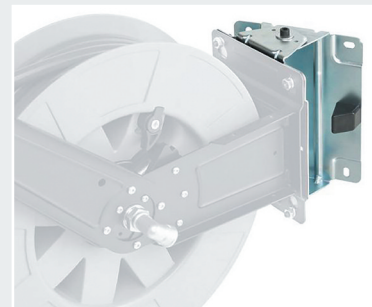


**8400 / CB**  
Black coil cover

#### Swival Bracket



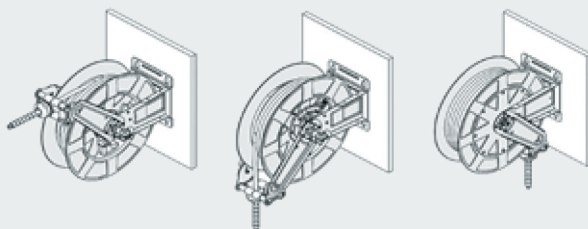
**8400 / SW**  
Swival bracket



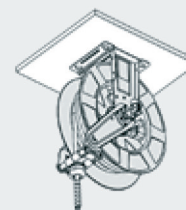
**8400 / SWI**  
Swival bracket in stainless steel

### Possible Installations

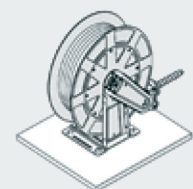
#### Wall Mounted



#### Ceiling



#### Floor



### Dimensions

