

TREE CANOPY ASSESSMENT



TOTAL STUDY AREA

7,416 ACRES



TREE CANOPY

2017 37% 2,743 ACRES

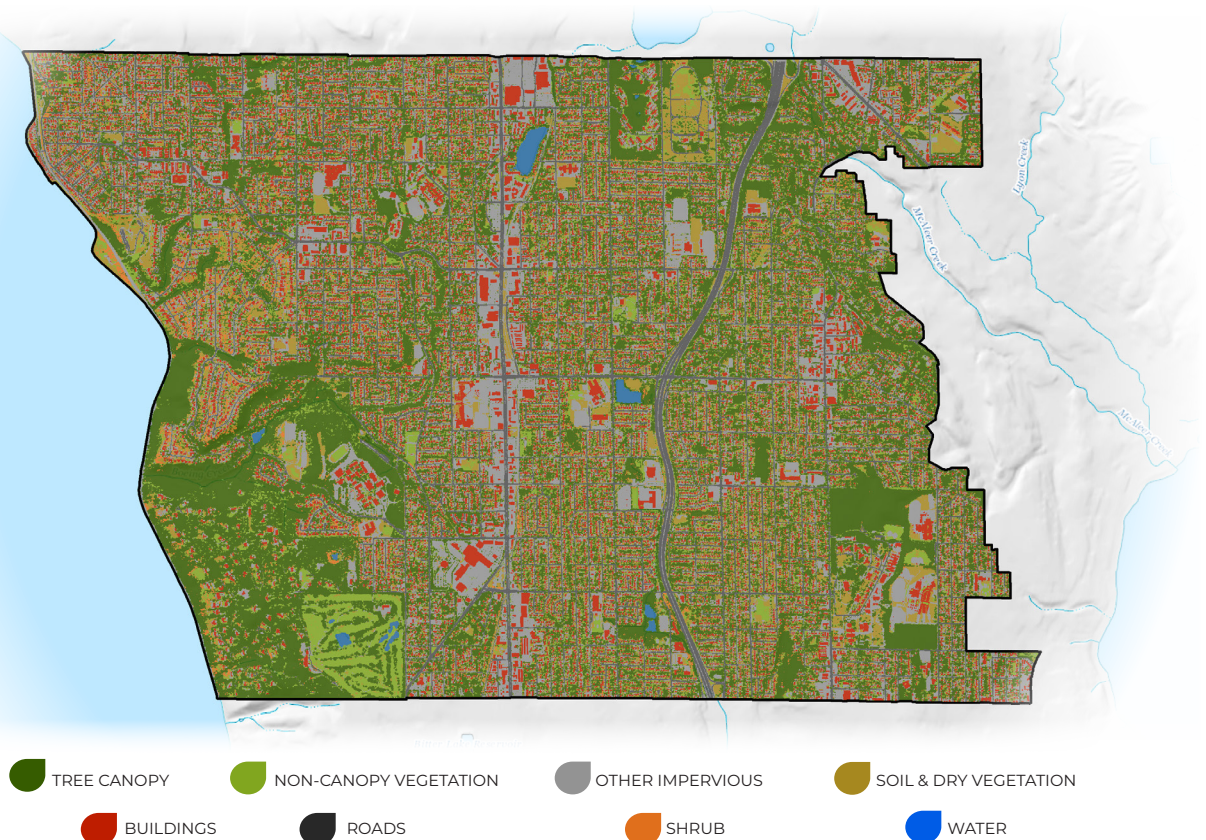
2010 31% 2,270 ACRES



PLANTABLE SPACE

14% 1,009 ACRES

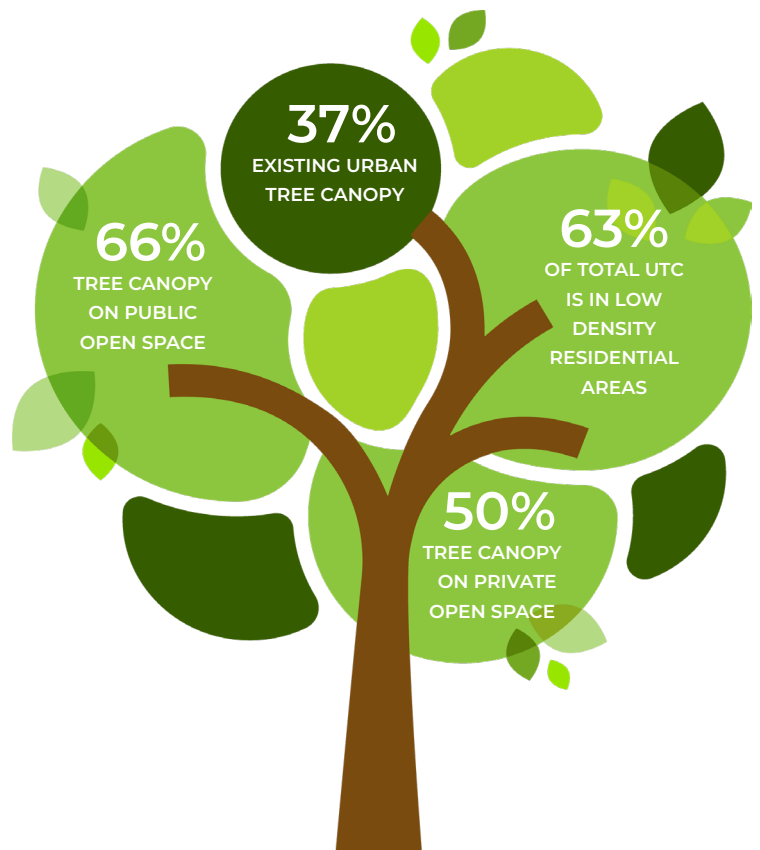
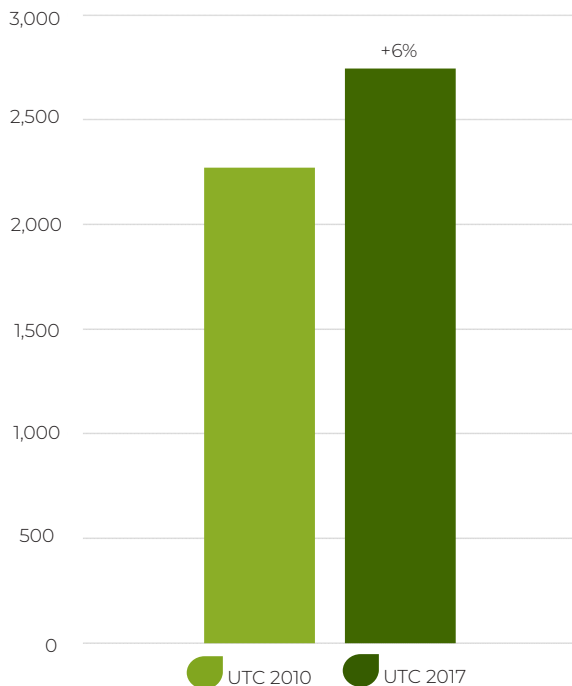
The city of Shoreline is committed to maintaining, protecting, and expanding its urban forest resource. Since its incorporation, the community has always held the long-term stewardship of its trees as a top priority. This assessment analyzed Shoreline's urban tree canopy in 2017. It serves as a follow-up to a prior study that estimated tree canopy in 1992, 2001, and 2010. Assessment results show that tree canopy coverage in Shoreline, WA has continued to expand.



*Land cover percentages are based on total area. Tree canopy percentages are based on land area only.

Canopy mapping data were analyzed for Shoreline's land use categories to determine how current and potential future tree canopy is distributed throughout the city. Public and Private Open Space had the highest canopy cover at 66% and 50%, respectively. Low-Density Residential areas had the greatest proportion of both the city's total existing canopy (63%) and total plantable space (67%).

TREE CANOPY INCREASE IN SHORELINE 2010-2017



Assessment Results by Land Use

Land Use	Total Area (Acres)	Land Area (Acres)	UTC (Acres)	UTC %	Distribution of UTC %	PPA (Acres)	PPA %	Distribution of PPA %
Institution/Campus	224	224	90	40%	4%	21	10%	2%
Low Density Residential	3,609	3,607	1,554	43%	63%	616	17%	67%
Medium Density Residential	69	69	27	39%	1%	10	14%	1%
High Density Residential	146	146	44	30%	2%	15	11%	2%
Mixed Use 1	237	237	29	12%	1%	12	5%	1%
Mixed Use 2	118	118	20	17%	1%	9	7%	1%
Planned Area 3	16	16	2	15%	0%	2	11%	0%
Public Facility	507	507	115	23%	5%	46	9%	5%
Private Open Space	326	321	160	50%	7%	55	17%	6%
Public Open Space	358	349	230	66%	9%	37	11%	4%
Station Area 1	200	200	63	32%	3%	30	15%	3%
Station Area 2	139	139	48	35%	2%	25	18%	3%
Station Area 3	157	157	62	39%	3%	29	18%	3%
Town Center District	105	105	11	10%	0%	5	5%	1%
Totals	6,212	6,195	2,455	40%	100%	913	15%	100%

"Plantable Space" was defined as vegetated areas without tree canopy. These areas may not be suitable for planting to increase canopy due to slope, views, soils, or other limitations.