

TREE CANOPY ASSESSMENT



TOTAL STUDY AREA

7,231 ACRES



TREE CANOPY

2009: 1,718 ACRES (23.8%)

2018: 1,684 ACRES (23.3%)



PLANTABLE SPACE

1,983 ACRES (27%)

Note: Urban tree canopy percentages are based on land area only.

The urban forest in Cupertino is a valuable asset that provides residents and visitors with many ecological, environmental, and community benefits. This assessment analyzed the City's urban tree canopy (UTC), possible planting area (PPA), and change in UTC over a nine-year period. The results provide an updated baseline to develop strategies to protect and expand Cupertino's trees and natural areas during planning and development. The maps and project report help to concentrate efforts in areas where needs are greatest, tree planting space is available, and benefits can be realized.

LAND COVER **23%** **18%** **48%** **10%** **<1%**










TREE CANOPY

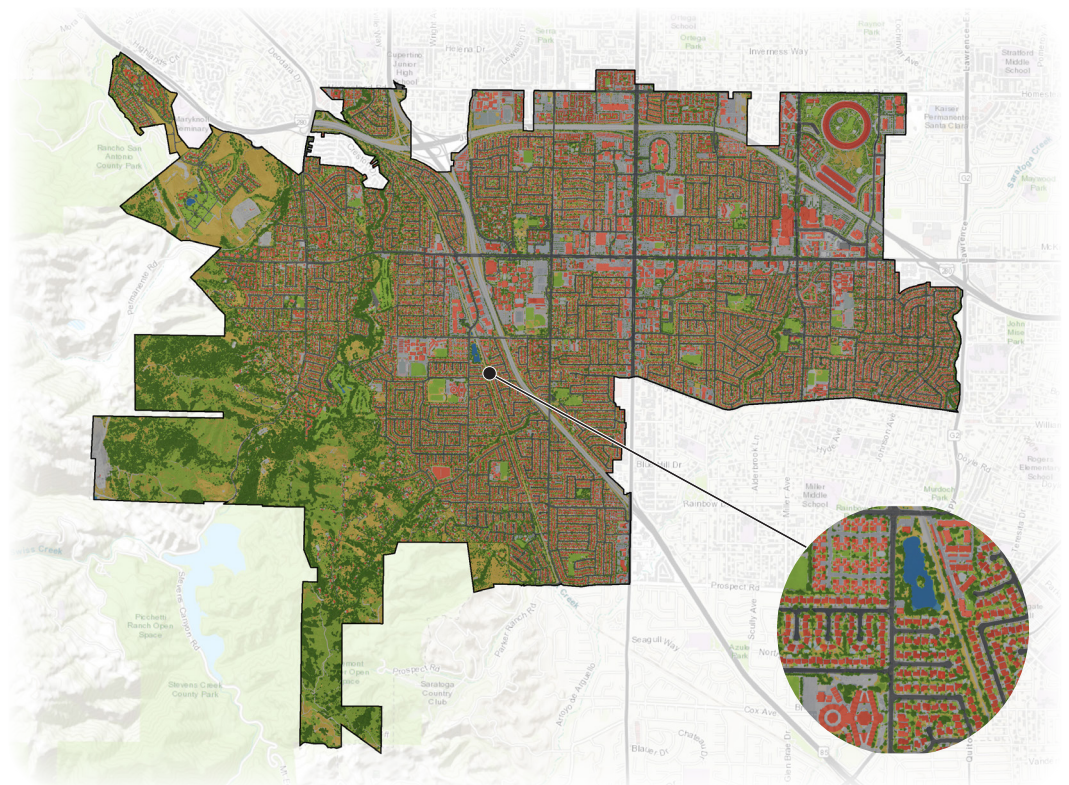
NON-CANOPY
VEGETATION

IMPERVIOUS

SOIL & DRY
VEGETATION

WATER

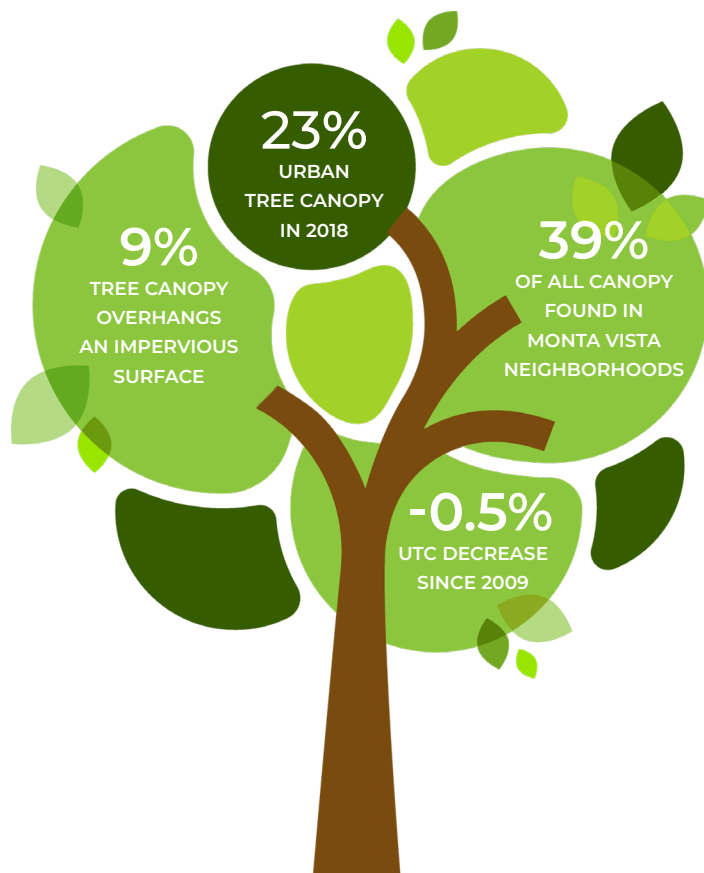
-  TREE CANOPY
-  OTHER VEGETATION
-  BUILDINGS
-  ROADS
-  PARKING LOTS
-  SIDEWALKS
-  OTHER IMPERVIOUS
-  SOIL & DRY VEGETATION
-  WATER



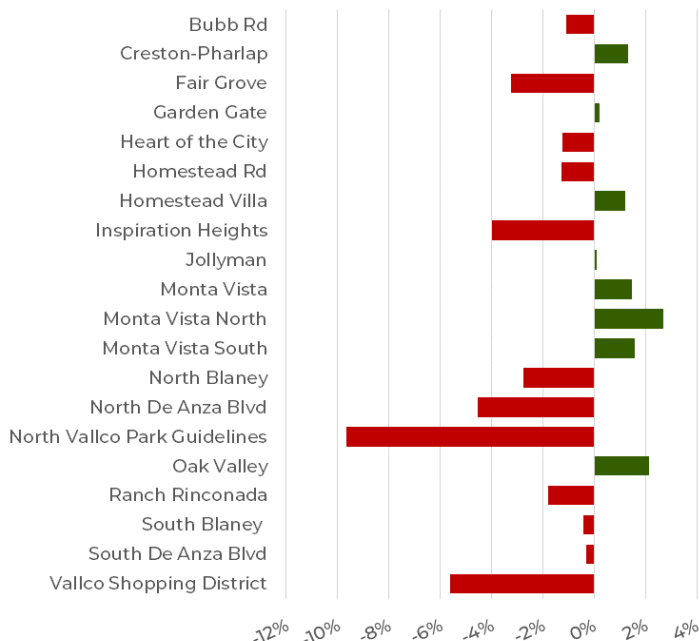
Note: Land cover percentages are based on total area.

Tree canopy data were analyzed for Cupertino's planning neighborhoods to determine the distribution of existing and potential urban tree canopy throughout the City. Inspiration Heights had the highest canopy coverage at 39% and comprised 18% of the City's total existing canopy. This neighborhood, Monta Vista South, and Oak Valley offered the greatest opportunities for expanding the City's canopy and contained a combined 51% of all PPA in Cupertino, with 44%, 39%, and 50% PPA, respectively.

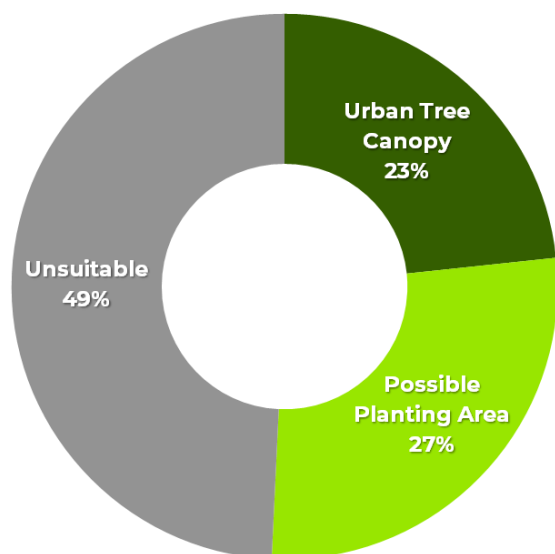
Planning Neighborhoods	Urban Tree Canopy		
	Acres	%	Dist.
Bubb Rd	36	9%	0%
Creston-Pharlap	307	25%	5%
Fair Grove	67	20%	1%
Garden Gate	288	16%	3%
Heart of the City	596	16%	6%
Homestead Rd	234	12%	2%
Homestead Villa	55	27%	1%
Inspiration Heights	778	39%	18%
Jollyman	343	18%	4%
Monta Vista	184	17%	2%
Monta Vista North	942	31%	18%
Monta Vista South	1,084	30%	20%
North Blaney	291	15%	3%
North De Anza Blvd	128	14%	1%
North Vallco Park Guidelines	269	17%	3%
Oak Valley	464	20%	6%
Ranch Rinconada	403	20%	5%
South Blaney	410	17%	4%
South De Anza Blvd	41	13%	0%
Vallco Shopping District	70	16%	1%
Totals	6,989	24%	100%



URBAN TREE CANOPY CHANGE IN CUPERTINO PLANNING NEIGHBORHOODS (2009-2018)



URBAN TREE CANOPY POTENTIAL



*Possible Planting Areas (PPA) were defined as vegetated areas without tree canopy, soil, and impervious surfaces such as parking lots and sidewalks. These areas may not be suitable for planting to increase canopy due to slope, views, soils, or other limitations. Field surveys to identify suitable planting areas are advised.



CITY OF CUPERTINO



PLANIT GEO
mapping a greener future