



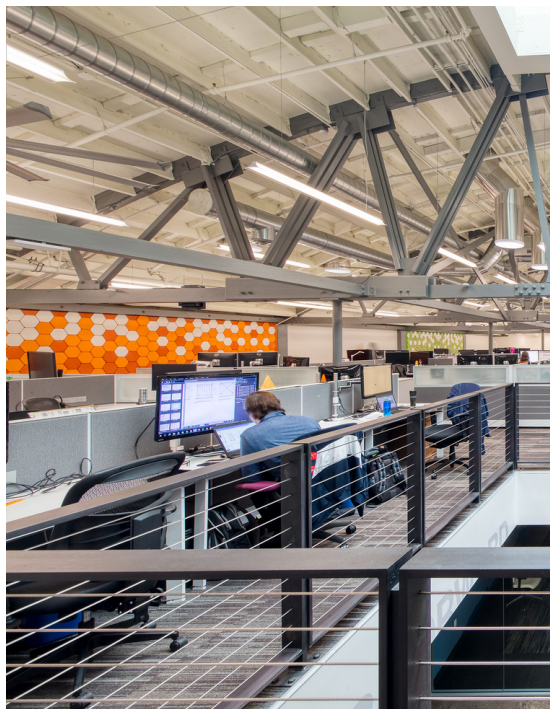
## ARCHITECTURAL LUMINAIRES

Experience the latest in lighting innovation with LANTANA's distinctive architectural luminaires. Easy to install and maintain, LANTANA Luminaires provide superior illumination with ultra-efficiency. All LANTANA solutions are backed by a 10-year warranty, illustrating LANTANA's commitment to quality.

### DESIGNED BY ARCHITECTS

Designed by Architects with a focus on aesthetics and function. LANTANA Luminaires offer an affordable, attractive alternative to traditional linear fixtures with 25% indirect, 75% direct lighting, and full-range dimming. Enjoy superior illumination with ultra-efficiency. Easy to install and maintain, LANTANA luminaires accommodate multiple mounting options like pendant, unistrut, and surface.

Elevate your space with the industrial-chic, distinctive profile of LANTANA Luminaires. Enjoy maximum light transmission through polished, co-molded acrylic housing. An attractive matte finish on the aluminum spine offers a modern aesthetic with white thermoplastic end caps. Choose from various wiring color options to fit your environment.



Designed in the USA  
Manufactured in USA and Canada



# PREMIUM LED ARCHITECTURAL LIGHTING



## SUPERIOR ILLUMINATION

Enjoy the uniform indirect and direct illumination for improved productivity and better educational outcomes. The unique light diffusion makes LANTANA Luminaires safe to look at directly.



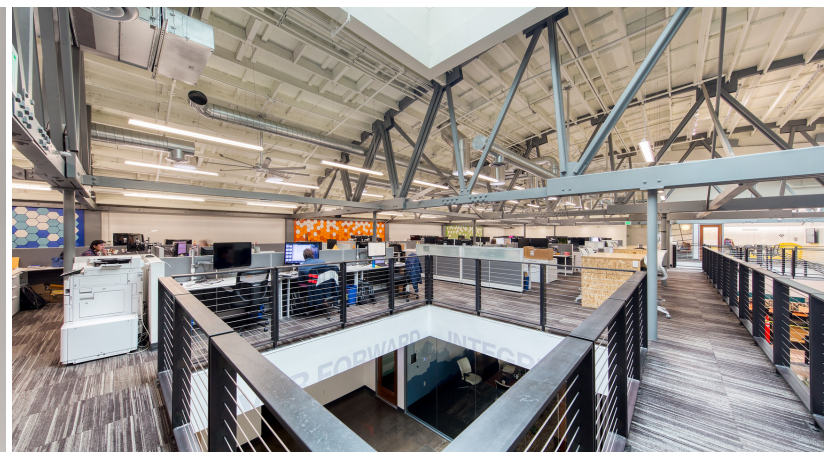
## ATTRACTIVE VERSATILITY

Illuminate and elevate various environments, including Healthcare, Education, Office Space, and Retail. Low heat distribution and ratings above 50°C/122°F make LANTANA Luminaires the ideal choice for Data Centers.



## EASY TO INSTALL & OPERATE

Experience simple installation and centralized operation and maintenance without disturbing occupants with integral drivers, PoE solutions, and low voltage remote driver units.



## ULTRA-EFFICIENT

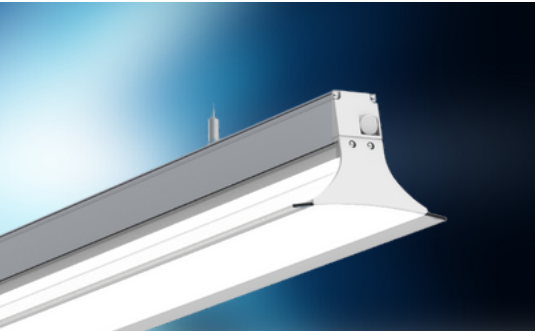
Save on utility costs and impacts on the environment. LANTANA Luminaires are DLC Premium, exceed Title 24 standards, and are among the most efficient LED light fixtures sold in the market.



Designed in the USA  
Manufactured in USA and Canada

## ULTIMATE FLEXIBILITY & CONTROL

### LEVERAGE MULTIPLE POWER OPTIONS



#### INTEGRAL

Experience reliable, constant and consistent electrical current at all times with LED driver integrated fixtures.



#### REMOTE

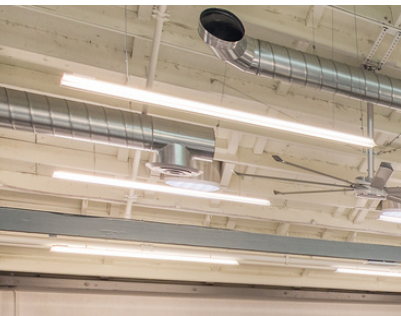
Control up to 20 drivers remotely with fixtures designed for distributed low voltage power.



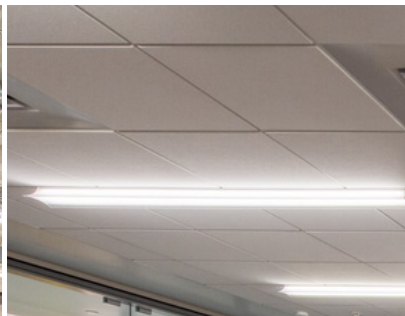
#### POWER OVER ETHERNET

Deliver power and data using standard Ethernet cables. Reduce labor and material costs and the need for outlets and AC/DC power supplies.

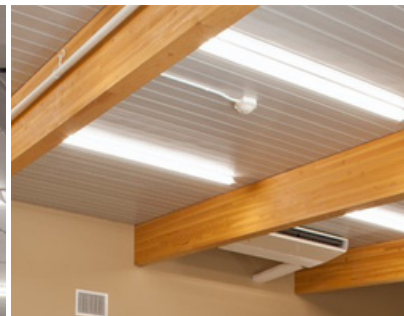
### ACCOMMODATE VARIOUS CEILING TYPES



#### PENDANT MOUNT



#### UNISTRUT MOUNT

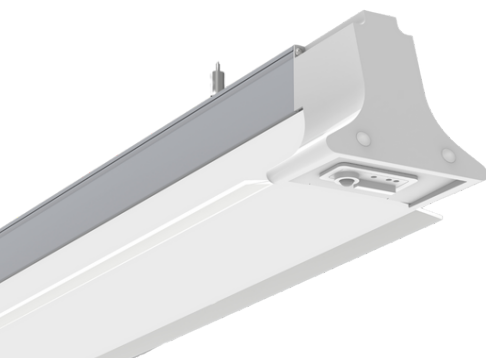


#### SURFACE MOUNT



#### CONTINUOUS RUN

### CAPTURE DATA FOR ACTIONABLE INSIGHTS



The LANTANA universal end cap accommodates most sensors to gather intelligence.

#### DAYLIGHT HARVESTING

Create lighting balance by leveraging the power and efficiency of the sun to control lighting options.

#### OCCUPANCY

Control the lighting power and dimming options based on space occupancy to improve energy efficiency and increase security.

#### RFID TRACKING

Wirelessly communicate data to an RFID reader when environmental changes and events occur.