

**Addendum No. 2
December 13, 2021**

Project: Corsica-Stickney Elementary School Addition
Stickney, South Dakota
Architect's Project No.: 2910
Architect: Architecture Incorporated

Opening: December 16, 2021
2:00 pm CST
Elementary School Gymnasium

Scope of this Addendum:

To all bidders and all others to whom drawings and specifications have been issued by Architecture Incorporated, this Addendum forms a part of the Contract Documents. Acknowledge receipt of this addendum by listing its number and date in the bidder's Form of Proposal. Failure to do so may subject bidder to disqualification. This addendum modifies the drawings and specifications as follows:

GENERAL ITEMS:

- 1) NONE

SPECIFICATION ITEMS:

- 1) 084113 – ALUMINUM-FRAMED ENTRANCES AND STOREFRONTS
 - a) **MODIFY** 2.5 ENTRANCE DOOR HARDWARE, C. to Continuous Hinges from Pivot Hinges
 - i) Aluminum Continuous Geared Hinge, Manufacturer's standard
(1) Finish: Clear
- 2) 095113 ACOUSTICAL PANEL CEILINGS
 - a) **MODIFY** 2.3 abbreviation to be (ACT1) instead of (ATC1)
 - b) **REMOVE** the reference at 2.6 to (At Commons, Music, and Media Center)
 - c) **REMOVE** the reference to cloud locations at 2.6 B.: 2. Provide factory-curved perimeter trim at circular cloud locations
- 3) 098435 ACOUSTICAL WALL PANEL TECTUM
 - a) **REMOVE** The Section in its entirety – It had been meant for Corsica H.S. only, the elementary has no Tectum wall panels.

DRAWING ITEMS:

- 1) SHEET 4.11 FIRST FLOOR PLAN: See new sheet with changes clouded and tagged with "2"
 - a) **ADD** Notes and concrete pattern hatch in mechanical room for 4" concrete housekeeping pads

GENERAL APPROVALS:

The following material or equipment furnished by the manufacturers listed, may be substituted as equivalent providing that each item, material, and piece of equipment conforms to the design and requirement of the specifications.

<u>SECTION</u>	<u>ITEM</u>	<u>MANUFACTURER</u>
----------------	-------------	---------------------

None at this time

MECHANICAL ITEMS:

See Attached Addendum M2

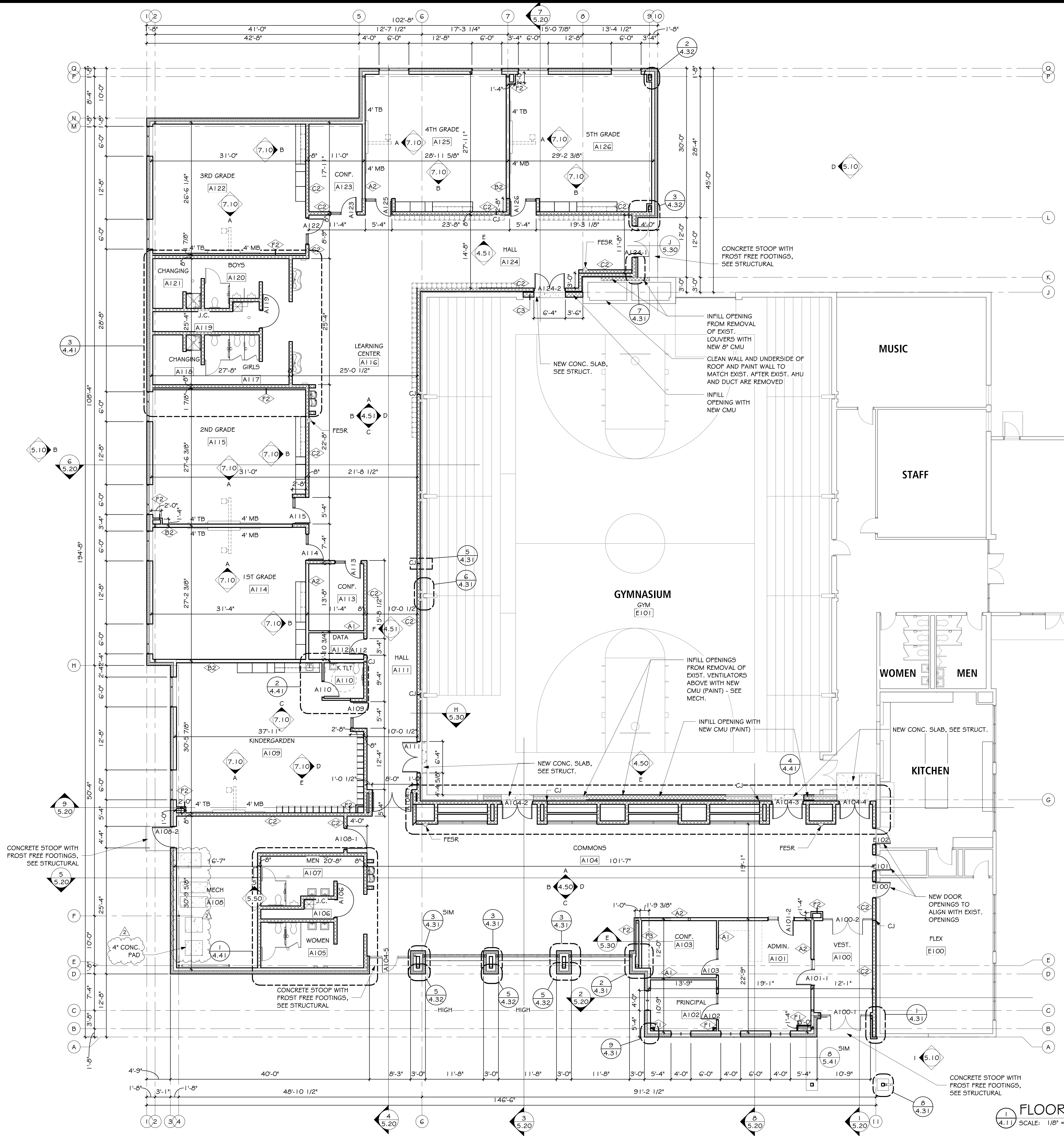
ELECTRICAL ITEMS:

See Attached Addendum E2

PLAN HOLDERS LIST:

None

END OF ADDENDUM #2



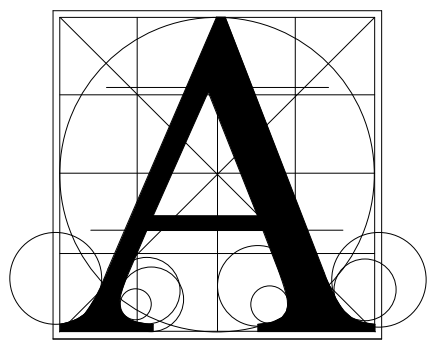
GENERAL NOTES - FLOOR PLAN

A. GENERAL CONTRACTOR SHALL VERIFY ALL EXISTING CONDITIONS AND DIMENSIONS AT THE JOB SITE. REPORT DISCREPANCIES TO THE ARCHITECT.

B. INTERIOR DIMENSION STRINGS ARE FROM FACE OF MASONRY OR CENTERLINE OF STEEL STUD UNLESS NOTED OTHERWISE.

C. REFER TO SHEET 1.10 FOR INTERIOR WALL TYPES.

D. WHERE WALLS WERE REMOVED, PATCH EXISTING WALL TO MATCH ADJACENT SURFACE AND FINISH. (TYPICAL).



Architecture
Incorporated

415 South Main Avenue
P.O. Box 2140
Sioux Falls, South Dakota 57101
Phone: (605) 339-1711

815 St Joseph Street, Suite 203
P.O. Box 8047
Rapid City, South Dakota 57701
Phone: (605) 721-1158



CORSICA-STICKNEY ELEM. SCHOOL ADDITION

FIRST FLOOR PLAN

number	1016.2910.20		
date	Nov. 23, 2021		
revision			
drawn	Author	checked	SRJ

NO.	DATE	DESCRIPTION
2	12.13.21	Addendum 2

4.11

ADDENDUM M2

CORSICA –STICKNEY ELEM. SCHOOL ADDITION
CORSICA-STICKNEY SCHOOL DISTRICT 21-3
STICKNEY, SOUTH DAKOTA

December 13, 2021

Associated Consulting Engineering, Inc.
340 South Phillips Avenue
Sioux Falls SD 57104-6910

SCOPE OF THIS ADDENDUM:

The following becomes a part of the original Drawings and Project Manual, taking precedence over those items that may conflict.

The Bidder shall note receipt and make acknowledgment of this addendum on the bid form, incorporating its provisions in their bid.

This addendum has been issued to all bidders and to all others to whom Drawings and Project Manuals have been issued by the office of the Architect/Engineer.

DRAWING ITEMS:

8.31 – FIRST FLOOR PLAN – PLUMBING & HEATING

BOYS A120 & GIRLS A117: L-2 Lavatory shall be re-named L-3. See attached plumbing fixture schedule for L-3 requirements.

8.32 – ENLARGED MECHANICAL & TOILET ROOM PLANS – PLUMBING & HEATING

BOYS A120 & GIRLS A117: L-2 Lavatory shall be re-named L-3. See attached plumbing fixture schedule for L-3 requirements.

8.50 – MECHANICAL SCHEDULES

PLUMBING FIXTURE SCHEDULE –

1. Added L-3 Lavatory. See attached schedule.

SUBSTITUTIONS AND PRODUCT OPTIONS

The following material or equipment furnished by the manufacturers listed may be substituted as equal, providing that each item, material, and piece of equipment conforms to the design and requirements of the Drawings and Project Manual.

<u>SECTION</u>	<u>ITEM</u>	<u>MANUFACTURER*</u>
230800	Fabric Duct	DurkeeSox

END OF ADDENDUM

PLUMBING FIXTURE SCHEDULE							
FIXTURE SYMBOL	TYPE	MANUFAC.	MODEL NO.	TRIM	SUPPLIES	WASTE	REMARKS
WC-1	WATER CLOSET FLUSH VALVE FLOOR MOUNTED KIDS	AMERICAN STANDARD	2599.001	SLOAN 8111 BATTERY OPERATOR	--	--	CHURCH 9500SSCT SEAT TRIP LEVER TO WIDE SIDE OF STALL
WC-2	WATER CLOSET FLUSH VALVE WALL HUNG ELONG	AMERICAN STANDARD	2634.101	SLOAN 152 ESS HARD WIRED	--	--	CHURCH 9500SSCT SEAT JOSAM SERIES 12000 CARRIER BACK SPUD
UR-1	URINAL WASHOUT WALL HUNG	AMERICAN STANDARD	6515-001	SLOAN 195 ESS HARD WIRED	--	--	JOSAM SERIES 17000 CARRIER BACK SPUD
MSK	MOPSINK FLOOR MOUNTED	ZURN	Z1996-24- SD-HH-MH	Z843M1-RC-CS W/VACUUM BREAKER	--	--	CW HB MTD 5'-0" AFF
L-1	LAVATORY WALL HUNG	AMERICAN STANDARD	0355.012	SYMMONS S-6080 BATTERY OPERATOR	BRASSCRAFT KTSCR19C	GRID DRAIN	17 GA. C.P. P-TRAP
L-2	LAVATORY WALL HUNG ADA	AMERICAN STANDARD	0355.012	SYMMONS S-6080 BATTERY OPERATOR	BRASSCRAFT KTSCR19C	GRID DRAIN	17 GA. C.P. P-TRAP, W/TRUBRO WASTE & WATER PIPE PROTECTOR, OFFSET WASTE ARM
L-3	LAVATORY WALL HUNG TWO STATION ADA	WILLOUGHBY	WAW-2322- IR	---	BRASSCRAFT KTSCR19C	--	17 GA. C.P. P-TRAP COORDINATE FINISH W/ARCH.
SK-1	SINK W/BUBBLER	ELKAY	DRKAD2220- 65L	CHICAGO 895-317 GOOSENECK FAUCET	BRASSCRAFT KTSCR19C	GRID DRAIN	17 GA. C.P. P-TRAP ELKAY BUBBLER LK142
SH-1	SHOWER HANDI	BEST BATH	LSS3838A5B	POWERS E710-(2)K- (2)1-0-0-Y-0	--	2" FLOOR DRAIN	ALL METAL TRIM, 2 FIXED SHOWER HEADS, STN STL HORIZONTAL GRAB BAR, FOLDUP SEAT, FLEXIBLE DAM & REMOVEABLE THRESHOLD
EWC-1	ELECTRIC WATER COOLER WALL MTD DUAL HEIGHT W/BOTTLE FILL	ELKAY	LZSTL8WSSP	---	BRASSCRAFT KTSCR19C	--	17 GA. C.P. P-TRAP
REMARKS : 1. HANDICAPPED FLUSH VALVES SHALL BE ADA COMPLIANT. 2. FLUSH VALVES SHALL HAVE A VANDAL RESISTANT STOP CAP. 3. FLUSH VALVE ESCUTCHEONS SHALL BE CHROME PLATED WITH HEAVY WALL THICKNESS AND SET SCREW. 4. PROVIDE & INSTALL (1) SLOAN PLUG-IN STYLE TRANSFORMER MODEL EL-154 PER 8 FIXTURES IN PLUMBING CHASE. PROVIDE & INSTALL INTERCONNECTING LOW VOLTAGE WIRING & CONNECTIONS TO SENSORS. 5. REFER TO ARCHITECTURAL DRAWINGS FOR FIXTURE MOUNTING HEIGHTS.							

ADDENDUM #E2

Corsica-Stickney Elem. School Addition
Stickney, SD

December 13, 2021

Associated Consulting Engineering, Inc.
340 South Phillips Avenue
Sioux Falls SD 57104-6910

SCOPE OF THIS ADDENDUM:

The following becomes a part of the original Drawings and Project Manual, taking precedence over those items that may conflict.

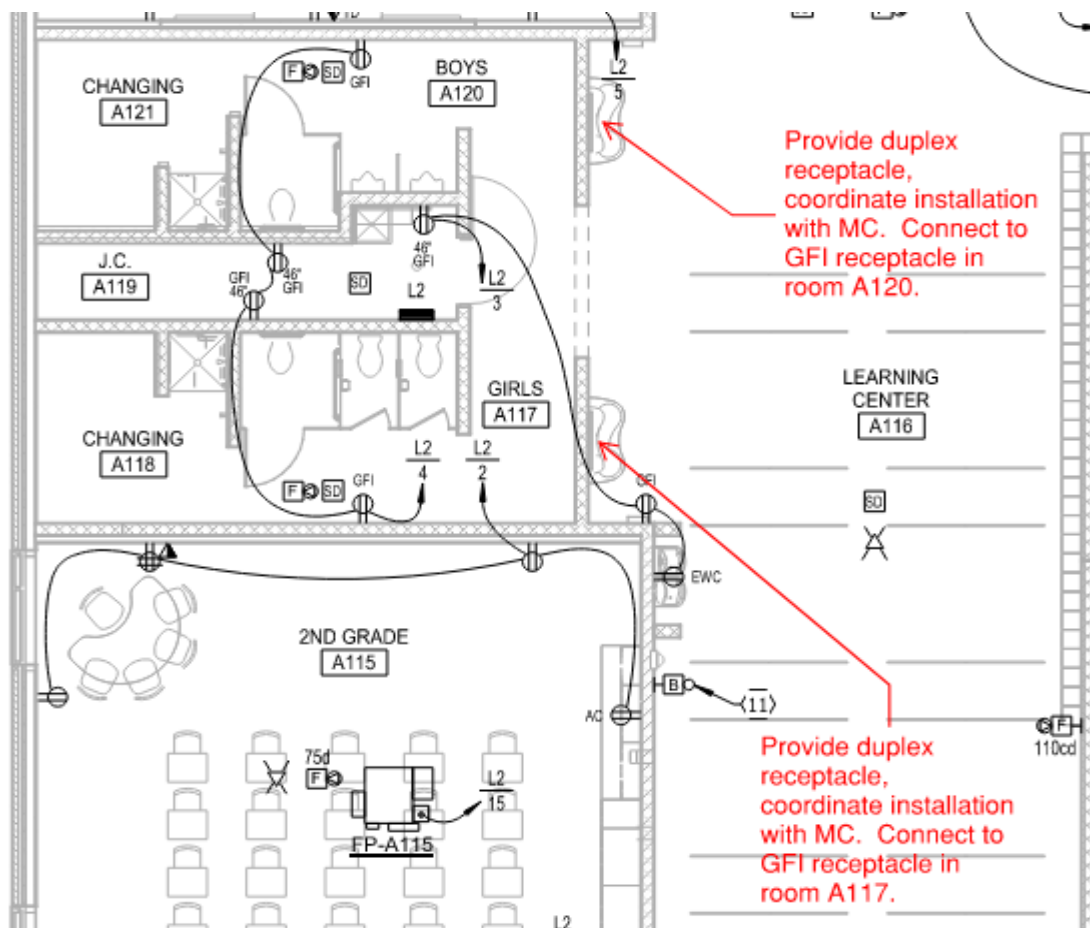
The Bidder shall note receipt and make acknowledgment of this addendum on the bid form, incorporating its provisions in their bid.

This addendum has been issued to all bidders and to all others to whom Drawings and Project Manuals have been issued by the office of the Architect/Engineer.

DRAWING ITEMS:

DRAWING SHEET 9.31 – FIRST FLOOR PLAN – POWER & SIGNAL

1. Room A116: Provide duplex receptacles as shown below.



DRAWING SHEET 9.40 – ELECTRICAL SYMBOLS AND ABBREVIATIONS

1. Lighting Fixture Schedule: Add type “L” luminaire (equal to Lightolier 6RN/P6RSL10840CLPZ10U).

END OF ADDENDUM