



OMI



R2104-RO1231-SPPS
RED SPINEL & DIAMOND RING

Platinum & 18K yellow gold ring featuring 3.56 carat total weight of pear-shaped spinels accented by 0.69 carat total weight of round spinels and 0.75 carat total weight of tapered diamond baguettes.



R2329-RC1483-MSMQ
SUPPORTING INFORMATION AND MATERIALS

DESIGN DETAILS

Red Spinel & Diamond Bypass Ring
Platinum & 18K Yellow Gold, Size 6.5
2 Red Spinel Pear-Shape 3.56 ctw. (10.6x6.0mm) - Natural
36 Red Spinel Rd 0.69 ctw. - Natural
16 Tapered Diamond Baguettes 0.75 ctw. (G+/VS+)

UNIQUE DESIGN TRAITS

A dynamic look, this bypass ring combines superior craftsmanship with a rare matched pair of red spinels.

Gently tapering diamond baguettes wrap around the finger, while the bold red spinels mounted in yellow gold are a striking statement.

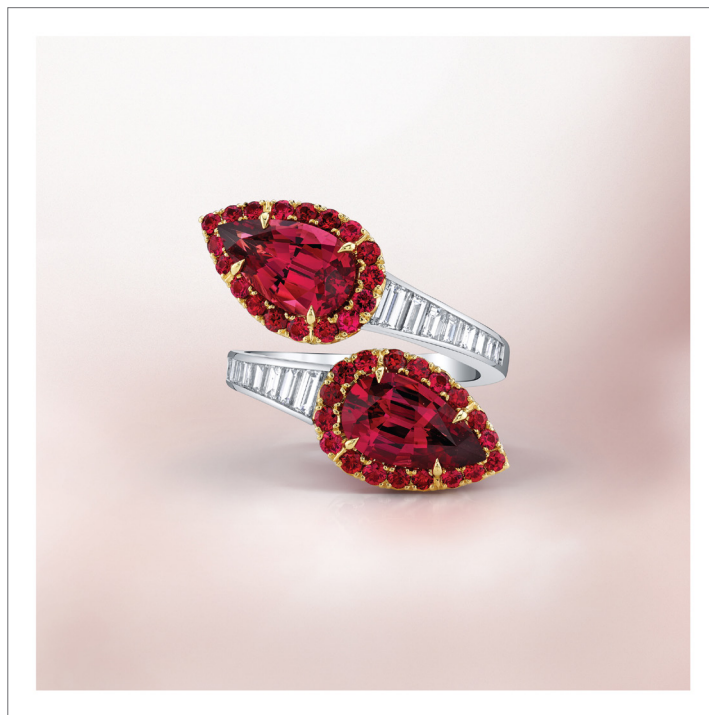
GEMSTONE DETAILS

Spinel

One of the most under-appreciated gemstones, spinel is coveted by collectors and gemologists for its range of hues and spectacular optical properties. Spinel was recently added as an official birthstone for August, raising its exposure to new heights. Recognized and prized for its hardness, brilliance, and unlike many other gem types, spinel is rarely treated or enhanced in any way. Many believe the name spinel comes from the Greek word for 'spark'. This name suits spinel well since it is a singularly refractive stone and is formed with cubic crystals similar to diamond, which gives this gemstone remarkable brilliance and fire.



R2329-RC1483-MSMQ
SUPPORTING INFORMATION AND MATERIALS





OMI

CERTIFICATE OF AUTHENTICITY

This document certifies that the holder of this certificate is the owner of a one-of-a-kind handcrafted jewelry piece designed by Niveet Nagpal of Omi Privé.



DESIGN DETAILS

Red Spinel & Diamond Bypass Ring
Platinum & 18K Yellow Gold, Size 6.5
2 Red Spinel Pear-Shape 3.56 ctw. (10.6x6.0mm) - Natural
36 Red Spinel Rd 0.69 ctw. - Natural
16 Tapered Diamond Baguettes 0.75 ctw. (G+/VS+)

Niveet Nagpal
Head Designer, Omi Privé

Authenticity Number: R2104

