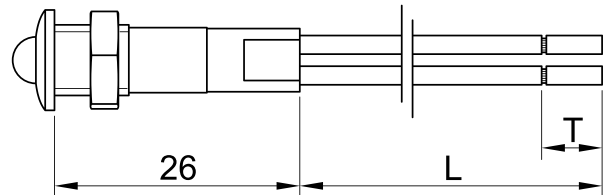
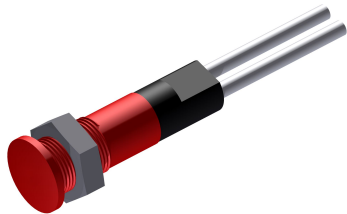




SLIM S.r.l.

Via dei Tigli, 14/16 (Z.I.)
20853 - Biassono (Monza Brianza) - Italy
commerciale@slim.it
www.slim.it

CODE: **TB/08/SB**



Light indicator with front panel's connection.

The color of the light is identified by the color's cable

AC/DC working without the need of any polarization of the signal

It can be supplied with mounted or separated nut

Lamps	incandescent • neon/fluoro • LED
Working voltage	2V • 6V • 12V • 24V • 48V • 110V • 250V • 400V
Working temperature	120°C Max • 150°C Max
Hole diameter	8mm
Recommended thickness panel	from 0,5mm to 2mm
Method of connection to the panel	with nut
Type of connection	PVC cable • silicone cable • silicone-glass cable
Type of lens	SB

Lenses available

