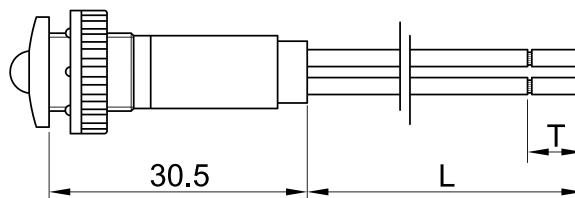
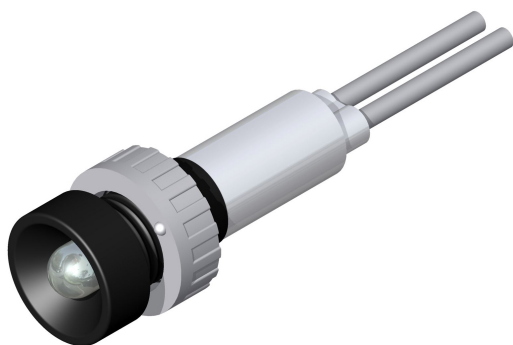




SLIM S.r.l.

Via dei Tigli, 14/16 (Z.I.)
20853 - Biassono (Monza Brianza) - Italy
commerciale@slim.it
www.slim.it

CODE: **LD/010**



LED Light indicator with front panel's connection

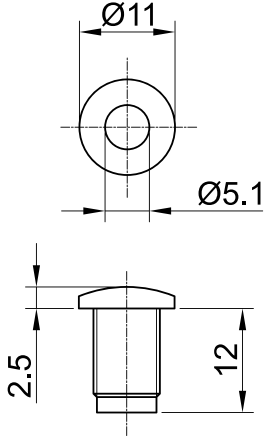
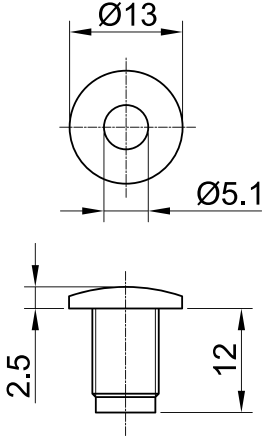
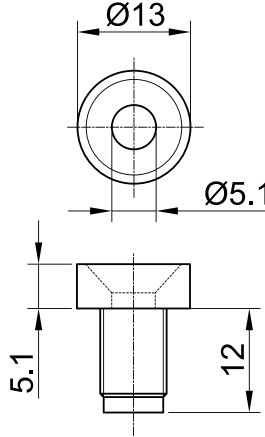
The color of the LED light is identified by the cable's color

AC/DC working without the need of any polarization of the signal

It can be supplied with mounted or separated nut

Lamps	LED
Working Voltage	2V • 6V • 12V • 24V • 48V • 110V • 250V • 400V
Working temperature	90°C Max • 120°C Max
Hole diameter	10mm
Recommended thickness panel	from 0,5mm to 5mm
Method of connection to the panel	with nut
Type of connection	PVC cable • silicone cable • silicone-glass cable
Wire ends	on request
Type of lens	010/01 • 010/02 • 010/03
Color's lens	Black or chromium plated lens

Lenses available

<div><div>LD/01001</div><div></div></div>	<div><div>LD/01002</div><div></div></div>	<div><div>LD/01003</div><div></div></div>
---	---	---