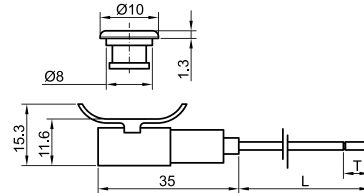
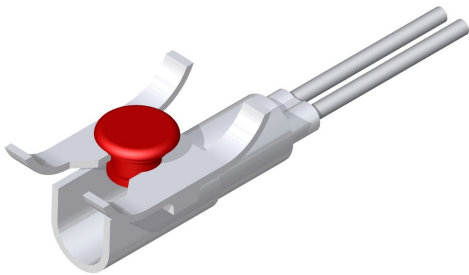




SLIM S.r.l.

Via dei Tigli, 14/16 (Z.I.)
20853 - Biassono (Monza Brianza) - Italy
commerciale@slim.it
www.slim.it

CODE: **TB/RL**



The lens connected from the front panel is fitted with the indicator body positioned on the back of the panel in correspondence with the drilling template (4 support points)

The light indicato is set parallel to the panel to reduce the internal encumbrance

Lamps	incandescent • neon/fluoro • LED
Working voltage	2V • 6V • 12V • 24V • 48V • 110V • 250V • 400V
Working temperature	90°C Max • 120°C Max • 150°C Max
Hole diameter	8mm
Recommended thickness panel	from 0,5mm to 2mm
Method of connection to the panel	self-locking
Type of connection	PVC cable • silicone cable • silicone-glass cable
Wire ends	on request
Type of lens	RL 1

Lenses available

