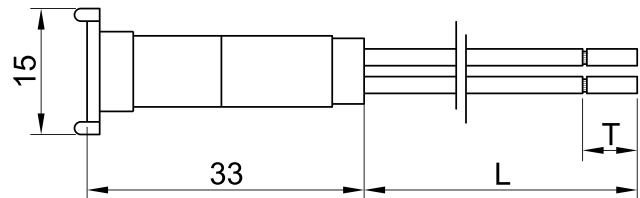
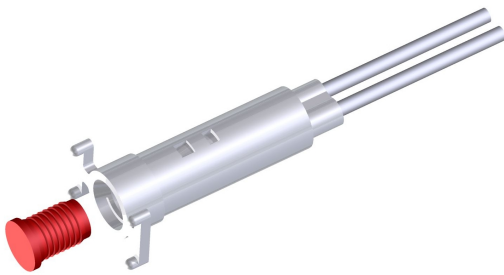




**SLIM S.r.l.**

Via dei Tigli, 14/16 (Z.I.)  
20853 - Biassono (Monza Brianza) - Italy  
[commerciale@slim.it](mailto:commerciale@slim.it)  
[www.slim.it](http://www.slim.it)

CODE: **TB/06RN/SU**



The lens connected from the front panel is fitted with the indicator body positioned on the back of the panel in correspondence with the drilling template (4 support points).

Lamps	incandescent • neon/fluoro • LED
Working Voltage	2V • 6V • 12V • 24V • 48V • 110V • 250V • 400V
Working temperature	90°C Max • 120°C Max • 150°C Max
Hole diameter	6mm
Recommended thickness panel	from 0,5mm to 2mm
Method of connection to the panel	Self-blocking
Type of connection	PVC cable • silicone cable • silicone-glass cable
Wire ends	on request
Type of lenses	SU1 • SU2 • SU3 • SU4 • SU5 • SU6

Lenses available

SU1	SU2	SU3	SU4	SU5	SU6
