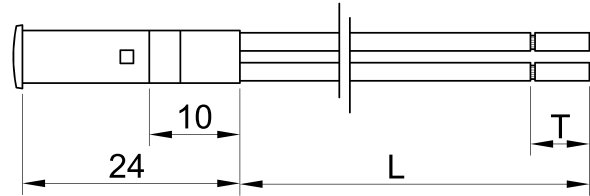
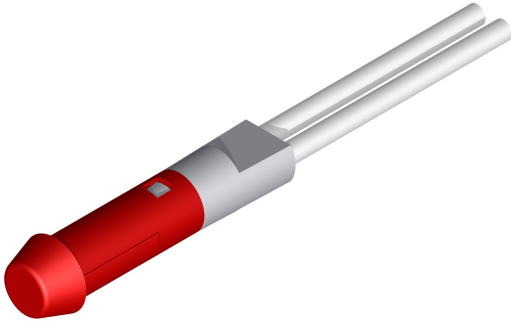




SLIM S.r.l.

Via dei Tigli, 14/16 (Z.I.)
20853 - Biassono (Monza Brianza) - Italy
commerciale@slim.it
www.slim.it

CODE: **TB/06/SQ-L**



Light indicator with front panel's connection

Lamps	incandescent • neon/fluoro • LED
Working voltage	2V • 6V • 12V • 24V • 48V • 110V • 250V • 400V
Working temperature	90°C Max • 120°C Max • 150°C Max
Hole diameter	6mm
Recommended thickness panel	from 0,5mm to 2mm
Method of connection to the panel	Self-locking
Type of connection	PVC cable • silicone cable • silicone-glass cable
Wire ends	on request
Type of lenses	SQ10 • SQ11 • SQ12 • SQ13 • SQ14 • SQ15 • SQ16 • SQ17 • SQ18 • SQ19 • SQ20

Lenses available

SQ10	SQ11	SQ12	SQ13	SQ14	SQ15
SQ16	SQ17	SQ18	SQ19	SQ20	

* Anello autobloccante - Self locking ring