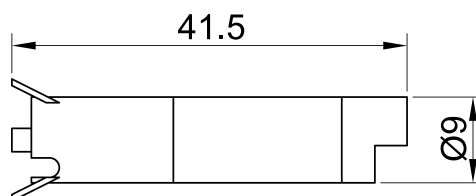
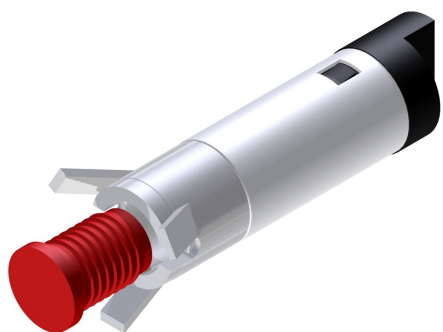




**SLIM S.r.l.**

Via dei Tigli, 14/16 (Z.I.)  
20853 - Biassono (Monza Brianza) - Italy  
[commerciale@slim.it](mailto:commerciale@slim.it)  
[www.slim.it](http://www.slim.it)

CODE: **FQ/06R/SU**



Light indicators with a device for quick connection

The front panel's connected lens is fitted with the indicator's body set on the back of the panel in correspondence of the drilling template (3 support points)

Lamps	incandescent • neon/fluoro • LED
Working Voltage	2V • 6V • 12V • 24V • 48V • 110V • 250V • 400V
Working temperature	120°C Max • 150°C Max
Hole diameter	6mm
Recommended thickness panel	from 0,5mm to 2mm
Method of connection to the panel	self-locking
Type of connection	quick connection
Type of lens	SU1 • SU2 • SU3 • SU4 • SU5 • SU6