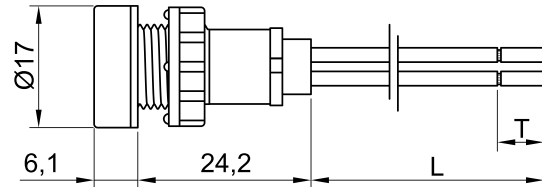
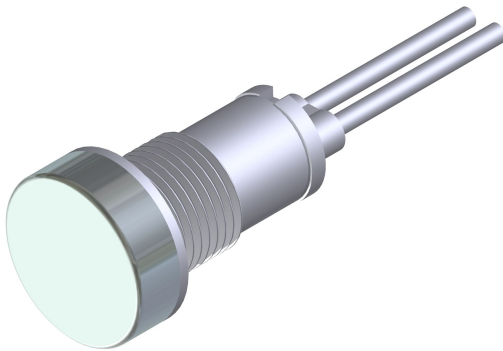




SLIM S.r.l.

Via dei Tigli, 14/16 (Z.I.)
20853 - Biassono (Monza Brianza) - Italy
commerciale@slim.it
www.slim.it

CODE: **TB/012/CSK**



LED SDM light indicator with front panel's connection - Hole \varnothing 12 mm

AC/DC functioning without the need of any polarization of the signal

It can be supplied with mounted or separated nut

Lamps	SDM LED
Working Voltage	12V • 230V
Working temperature	60°C Max
Hole diameter	12mm
Recommended thickness panel	from 0,5mm to 5mm
Method of connection to the panel	with nut
Type of connection	PVC cable • silicone cable • silicone-glass cable
Wire ends	on request
Type of lens	CSK1