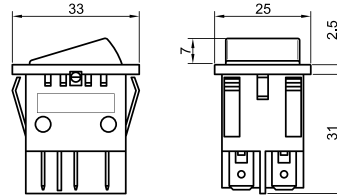
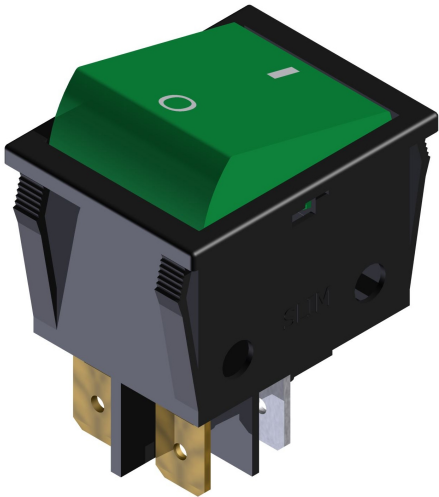




**SLIM S.r.l.**

Via dei Tigli, 14/16 (Z.I.)  
20853 - Biassono (Monza Brianza) - Italy  
[commerciale@slim.it](mailto:commerciale@slim.it)  
[www.slim.it](http://www.slim.it)

CODE: **CR2**



Double pole command for 22x30 mm template

Lamps	incandescent • neon/fluoro • LED • not lighting
Working Voltage	2V • 6V • 12V • 24V • 48V • 110V • 250V • 400V
Working temperature	125°C Max
Method of connection to the panel	self-locking
Template dimension	22mm x 30mm
Type of connection	faston 6,3x0,8mm • faston 4,8x0,8mm •