

APPLICATION INSTRUCTIONS

FOR

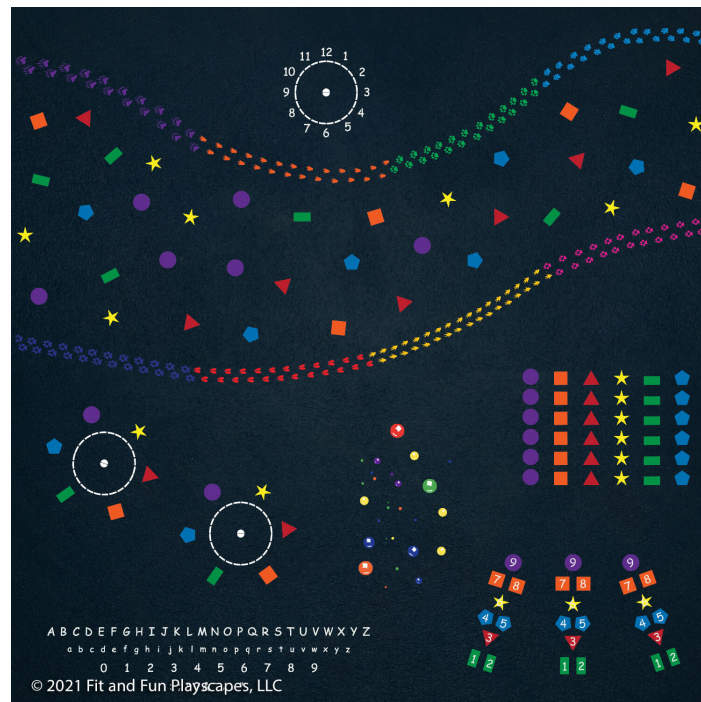
PRE-K POWER UP DELUXE REUSABLE STENCIL PACKAGE

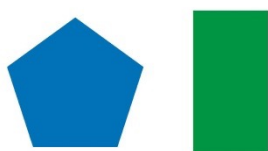
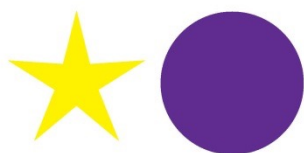
Product Number: SP-PP-019

Completely read "General Instructions." Prepare surfaces as recommended before painting.

This document contains Application Instructions for the following Reusable Stencils included in the **PE SHAPE UP REUSABLE STENCIL PACKAGE**:

1. SHAPES THAT SHAPE YOU UP: Product Number: 11-1W-004
2. ANIMAL PAW PRINTS: Product Number: 11-1W-001
3. BUBBLES, BUBBLES EVERYWHERE: Product Number: 11-1P-005
4. CIRCLE UP (Small): Product Number: 11-1W-011
5. FULL NUMBER & LETTER SET: Product Number: 11-SP-031





APPLICATION INSTRUCTIONS FOR THE **SHAPES THAT SHAPE YOU UP**

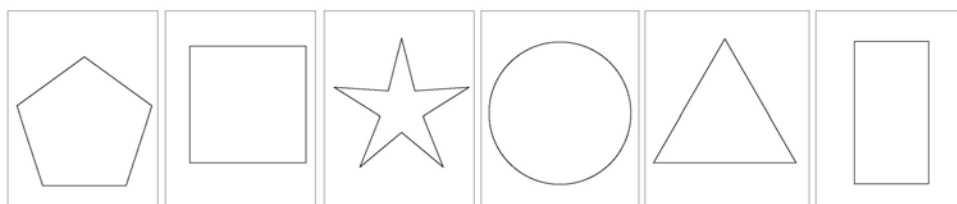
Product Number: 11-1W-004

SIZE: approximately 11.75 – 21 inches each

ESTIMATED PAINT TIME: depends on selected pattern.

FIRST READ: Completely read "General Instructions".
Prepare surfaces as recommended before painting.

1. Using various sized brushes or rollers, paint each stencil as desired. Repeat 1-2 more times to achieve desired vividness, drying after each application, and remove stencil. Allow to dry for 24 hours before use.



SEE OTHER APPLICATION INSTRUCTIONS FOR OTHER GAME IDEAS



APPLICATION INSTRUCTIONS FOR THE **SHAPES THAT SHAPE YOU UP LINE**

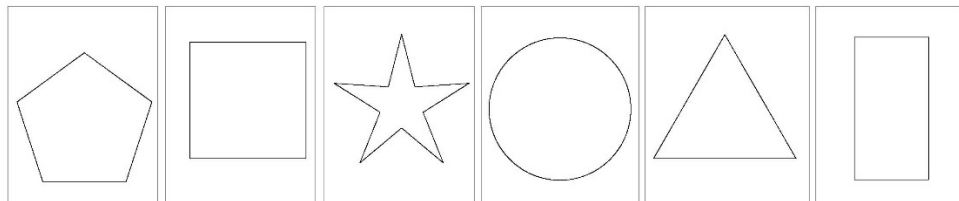
Product Number: 11-1W-004

SIZE: depends on desired spacing between each shape. One set of each shape spaced approximately 6 inches apart is approximately 12 feet 8 inches long. Width is 11.75-21 inches wide.

ESTIMATED PAINT TIME: approximately 1 – 2 people for less than 1 hour.

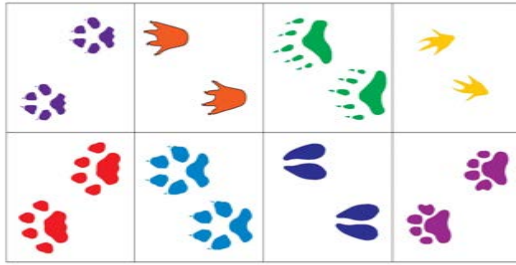
FIRST READ: Completely read “General Instructions”. Prepare surfaces as recommended before painting.

1. Arrange stencils in desired pattern with equal desired spacing between the sheets. Chalking may be needed for accuracy. The image below shows one of various patterns:



2. Using various sized brushes or rollers, paint each stencil as desired. Repeat 1-2 more times to achieve desired vividness, drying after each application, and remove stencil. Allow to dry for 24 hours before use.
3. Shapes can be reapplied to create longer lengths or different patterns. Letters or numbers can be painted after shapes are completely dry.

Any questions? We're here to help – call us at (800) 681-0684!



APPLICATION INSTRUCTIONS FOR THE

ANIMAL PAW PRINTS

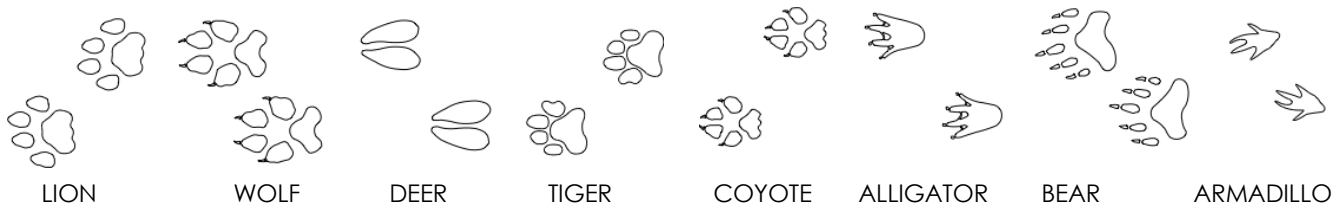
Product Number: 11-1W-001

SIZE: Paw print sizes vary from 4-10 inches

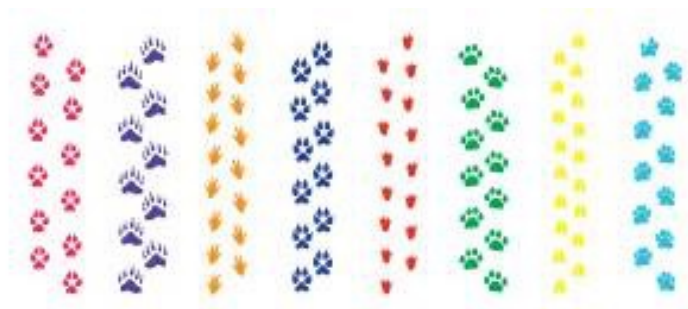
ESTIMATED PAINT TIME: 1-2 people for less than 1 hour

FIRST READ: Completely read "General Instructions". Prepare surfaces as recommended before painting.

- Using various sized brushes or rollers, paint each stencil as desired. Repeat 1-2 more times to achieve desired vividness, drying after each application, and remove stencil. Allow to dry for 24 hours before use.



Any questions? We're here to help – call us at (800) 681-0684!



APPLICATION INSTRUCTIONS

FOR THE

ANIMAL PAW PRINTS STATIONS

Product Number: 11-1W-001

SIZE: Paw print sizes vary from 4-10 inches

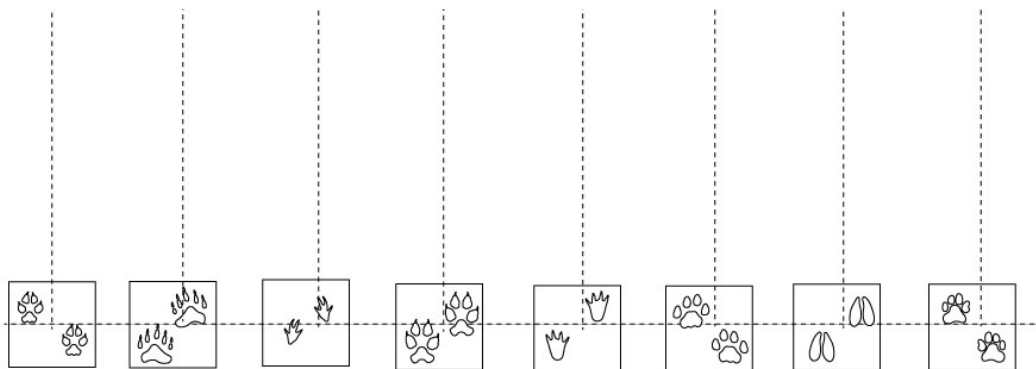
ESTIMATED PAINT TIME: 1-2 people for 3-6 hours

FIRST READ: Completely read "General Instructions". Prepare surfaces as recommended before painting.

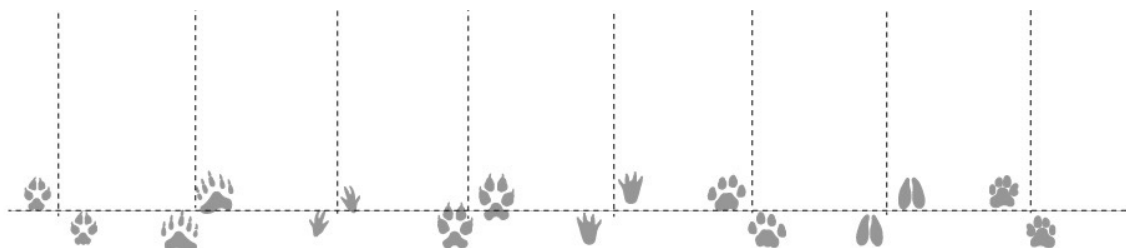
1. Make a straight line with chalk or washable marker approximately 25 feet wide, or other desired width. Then mark 8 perpendicular lines, approximately 36 inches apart and of desired length. Refer to diagram below.



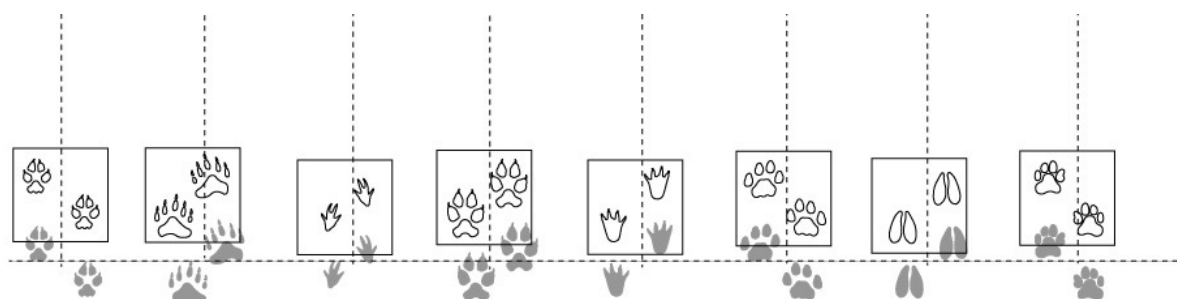
2. Center each stencil over chalked line, approximately 36 inches apart from center of each. Refer to diagram below.



3. Using narrow brushes or rollers, paint each stencil as desired. Repeat 1-2 more times to achieve desired vividness, drying after each application, and remove stencils. The painted pavement should appear as below.



4. Wipe stencils down and let paint on them dry before re-applying. Position stencils over chalked lines, adjusting each so that the spacing appears natural noting that a variety of paw placement positions are possible.

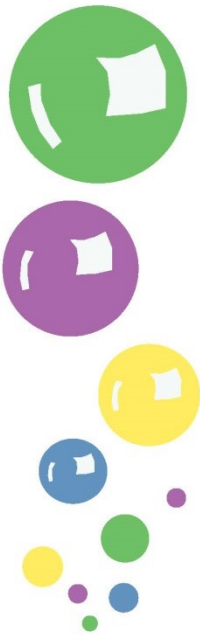


5. Repeat Step 4 desired number of times, drying/ wiping stencils between applications until complete. Final painted pavement should appear similar to below.



6. Allow to dry for 24 hours before use.

Any questions? We're here to help – call us at (800) 681-0684!



APPLICATION INSTRUCTIONS FOR THE **BUBBLES, BUBBLES EVERY- WHERE!**

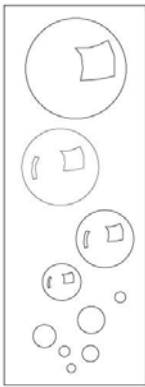
Product Number: 11-1P-005

SIZE: various sizes but all fit on a 2 ft by 8 ft sheet

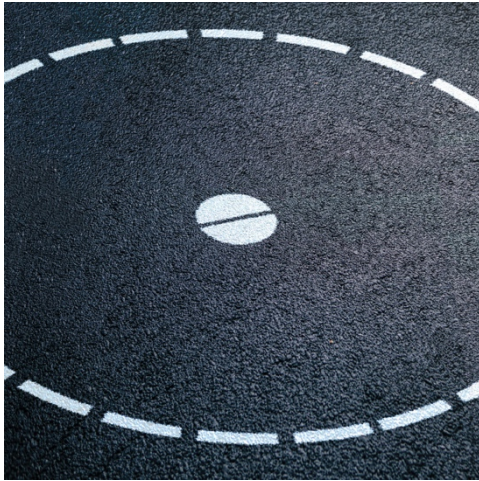
ESTIMATED PAINT TIME: 1-2 people for less than 1 hour

FIRST READ: Completely read "General Instructions". Prepare surfaces as recommended before painting.

1. Using various sized brushes, paint as desired, repeating to create larger designs. Repeat 1-2 more times to achieve desired vividness, drying after each application, and remove stencil. Allow to dry for 24 hours before use.



Any questions? We're here to help – call us at (800) 681-0684!



APPLICATION INSTRUCTIONS

FOR THE

CIRCLE UP (SMALL)

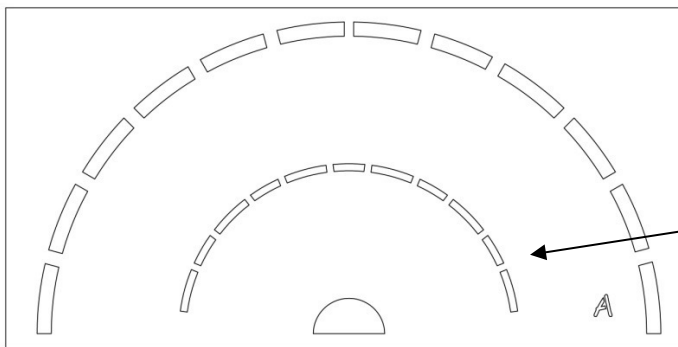
Product Number: 11-1W-011

SIZE: diameter (width) approximately 7 feet 4 inches

ESTIMATED PAINT TIME: approximately 1 – 2 people for 1 – 2 hours.

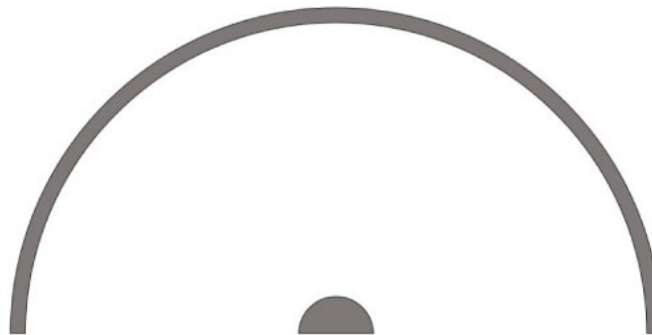
FIRST READ: Completely read "General Instructions". Prepare surfaces as recommended before painting.

1. Place STENCIL A in desired location and paint outer and innermost circles. Repeat 1-2 more times to achieve desired vividness, drying after each application, and remove STENCIL A.

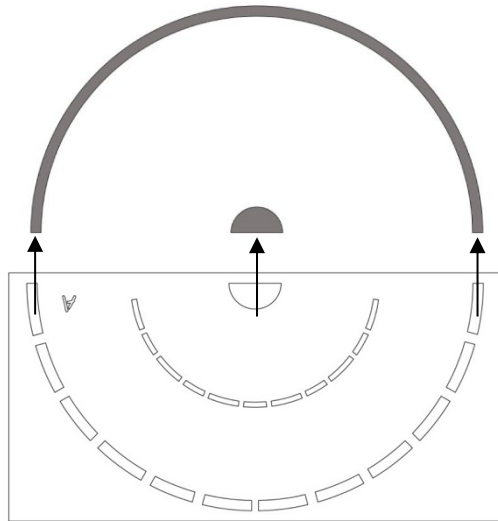


Do not paint middle circle.

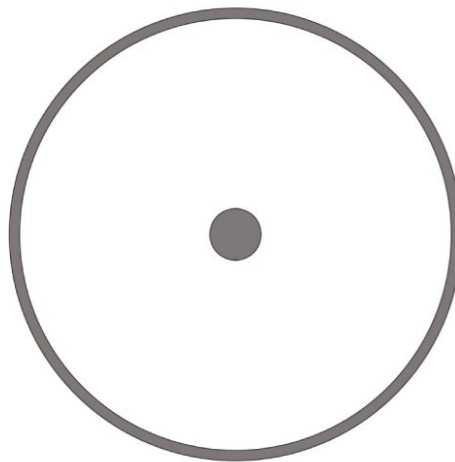
2. If desired, paint the gaps. You can use stencil for this by slightly rotating stencil so cut outs are positioned over the gaps. Repeat 1-2 more times to achieve desired vividness, drying after each application, and remove STENCIL A. It should appear as below.



3. Take STENCIL A and rotate completely and match to painted circle ends as shown below.



4. Paint as desired. Repeat 1-2 more times to achieve desired vividness, drying after each application. Rotate and paint gaps if desired.



5. Add numbers or letters around perimeter of the circle, if desired.
6. Allow all paint to dry for a minimum of 24 hours before use.



Any Questions?

We're here to help – call us at (800) 681-0684!



THIS INFORMATION IS COPYRIGHT MATERIAL. ALL RIGHTS ARE RESERVED.

© 2021 FIT AND FUN PLAYSCAPES, LLC



A B C D E F G H I J K L

M N O P Q R S T

U V W X Y Z

a b c d e f g h i j k l m

n o p q r s t u v w x y z

0 1 2 3 4 5 6 7 8 9 , . ' " ? & -

APPLICATION INSTRUCTIONS FOR THE

FULL NUMBER & LETTER SET

Product Number: 11-SP-031

SIZE: each letter and number is approximately 10
Inches high.

ESTIMATED PAINT TIME: depends on desired pattern.

FIRST READ: Completely read "General Instructions".
Prepare surfaces as recommended before painting.

1. Stencils are individual squares. Align as desired, noting the widths vary. Using small brushes, paint each stencil as desired.
2. Repeat 1-2 more times to achieve desired vividness, drying after each application, and remove stencil.
3. Allow to dry for 24 hours before use.

Any questions? We're here to help – call us at (800) 681-0684!



THIS INFORMATION IS COPYRIGHT MATERIAL. ALL RIGHTS ARE RESERVED.

© 2017 FIT AND FUN PLAYSCAPES, LLC