

APPLICATION INSTRUCTIONS

FOR THE

TETHER BALL COURT

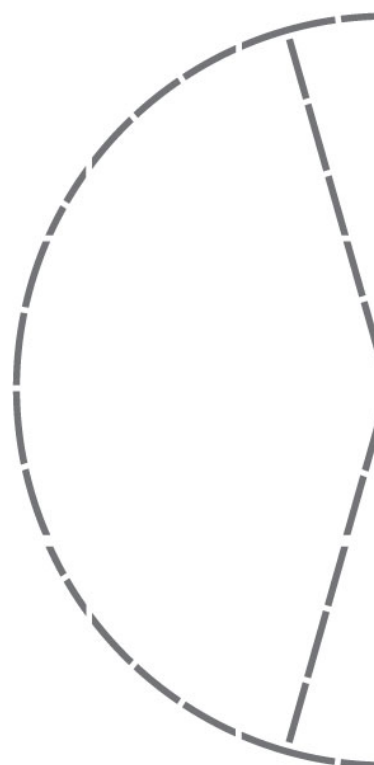
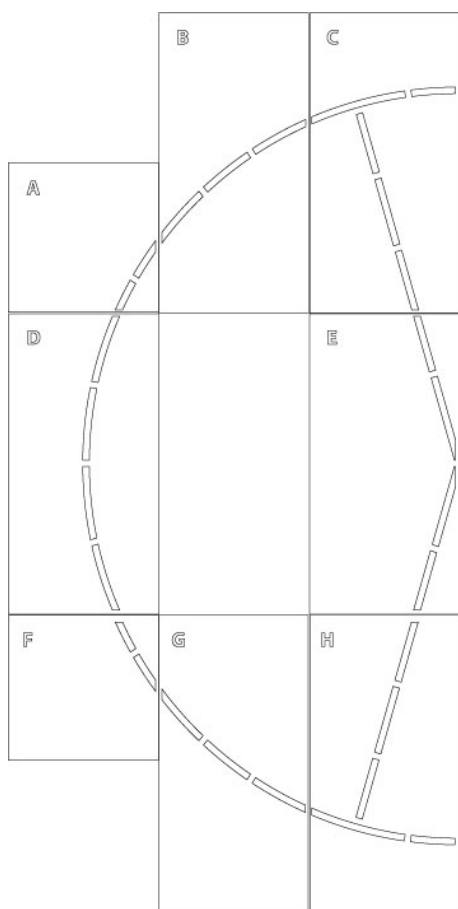
Product Number: 18-8W-084

SIZE: diameter (width) approximately 20 feet

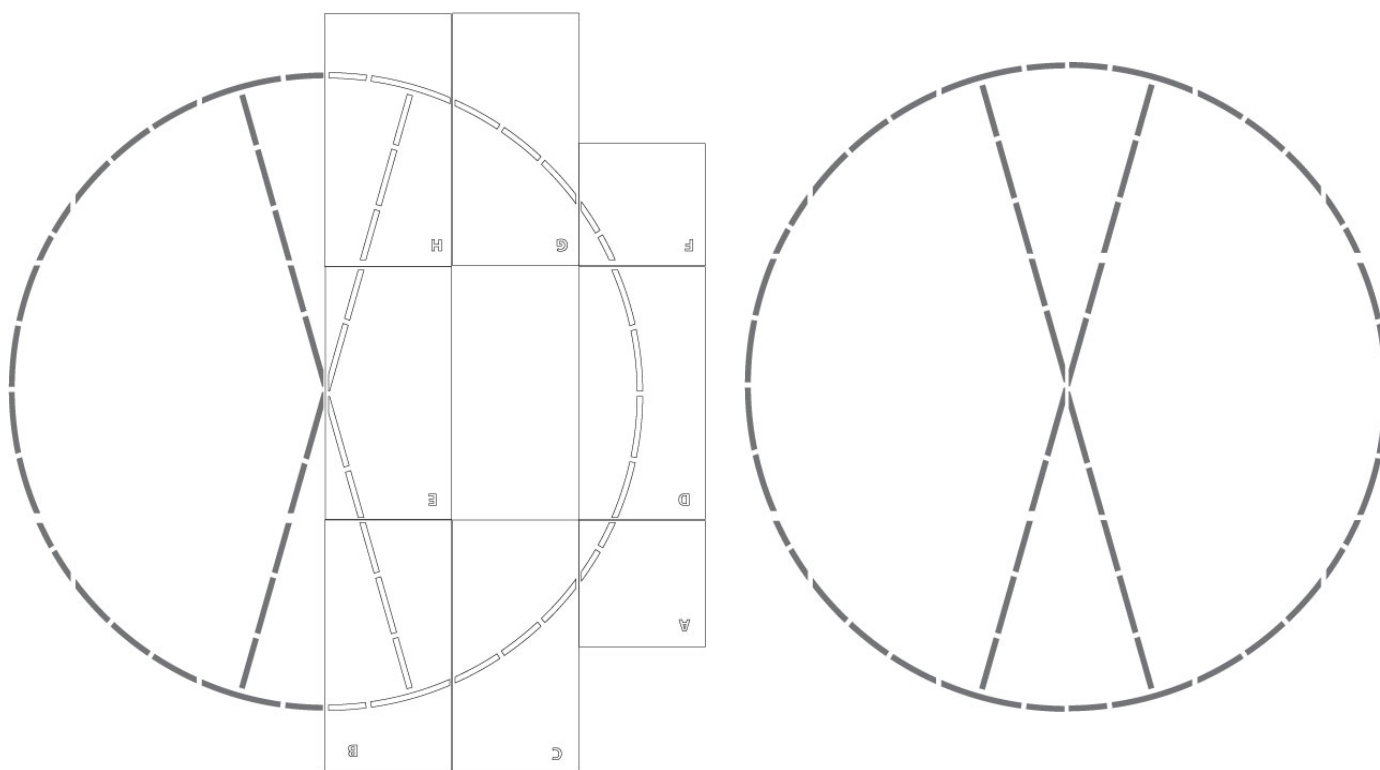
ESTIMATED PAINT TIME: approximately 1-2 people for ½-1 hour.

FIRST READ: Completely read "General Instructions". Prepare surfaces as recommended before painting.

1. Layout and align STENCILS to create half of the court as shown below, locating the center point of the court and then paint. Repeat 1-2 more times to achieve desired vividness, drying after each application. Remove STENCIL. The painted image should appear as shown below right.



2. To complete other half, ensure STENCILS and pavement are completely dry before next steps. Rotate and align STENCILS next to painted pavement as shown below left and paint. Repeat 1-2 more times to achieve desired vividness, drying after each application. Remove STENCIL. Painted pavement should appear as below right. (If preferred, inside of court can be painted with desired color)



3. Let completely dry, approximately 24 hours, before use.

Any questions? We're here to help – call us at (800) 681-0684!