

APPLICATION INSTRUCTIONS

FOR THE

FOUR SQUARE (LARGE)

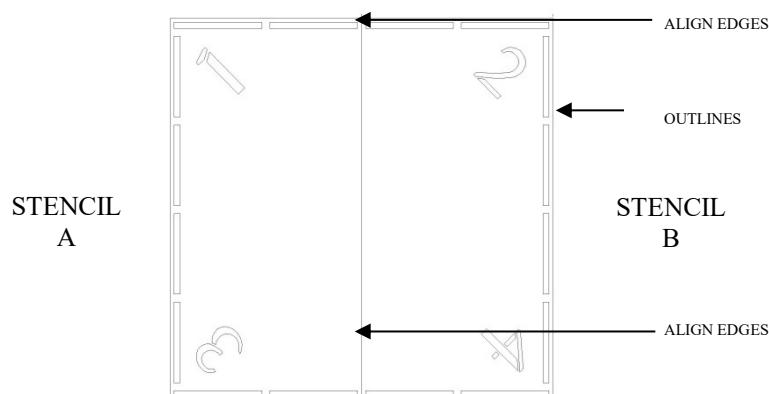
Product Number: 11-2W-015

SIZE: approximately 16 feet each side

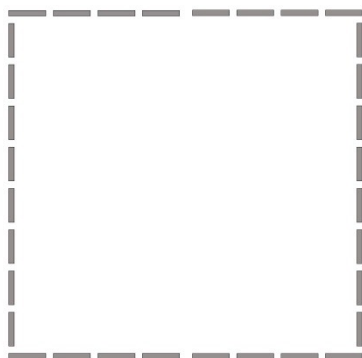
ESTIMATED PAINT TIME: approximately 2 – 4 people for 1 – 2 hours.

FIRST READ: Completely read "General Instructions". Prepare surfaces as recommended before painting.

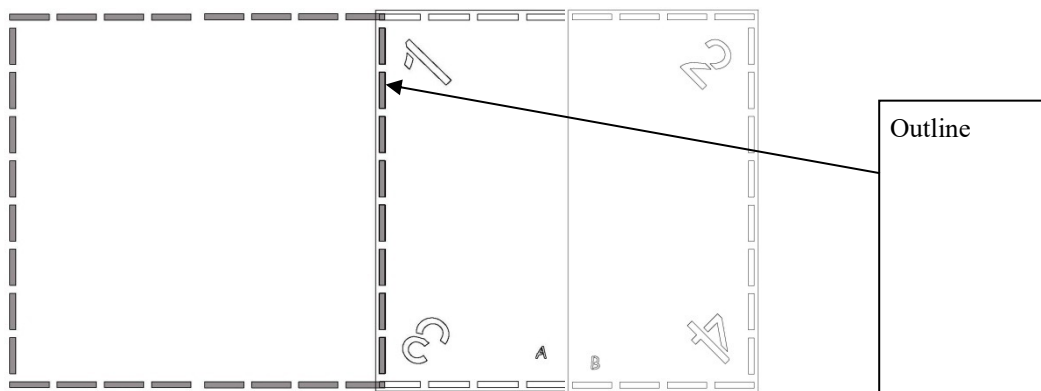
1. Align STENCIL A and B along the edges as shown below and tape.



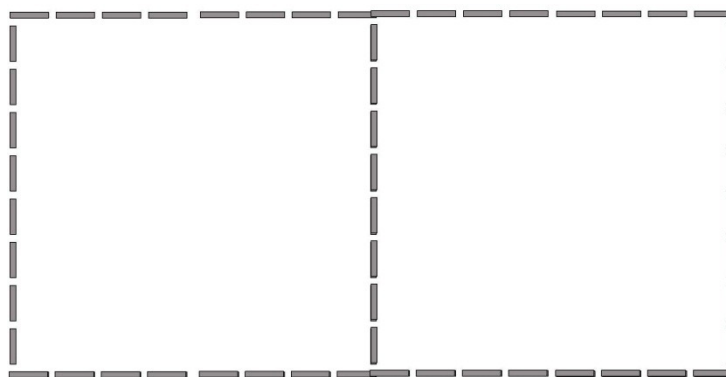
2. Paint **only** the outlines of each stencil. Repeat 1-2 more times to achieve desired vividness, drying after each application. Then, when fully dry, remove stencils. It should look like as follows:



3. Locate and align outline of STENCIL A over one side of the painted outlines, lapping over the dried painted outline. Tape and then align STENCIL B to STENCIL A and tape as shown below:



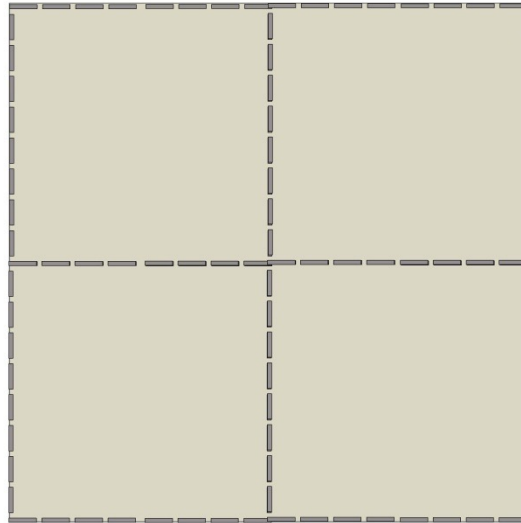
4. Paint **only** the outlines of each stencil. Repeat 1-2 more times to achieve desired vividness, drying after each application. Then when fully dry, remove stencils. It should look like as follows:



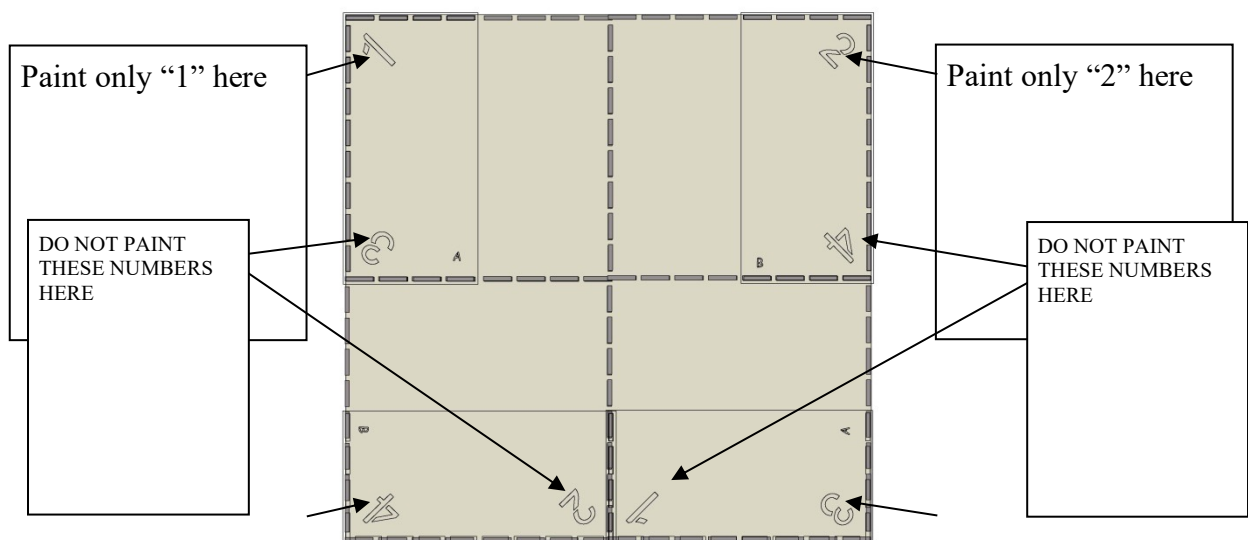
5. Complete other two quadrants of game as in steps 1-4 above until all four quadrants are painted. The painted pavement should look as follows:



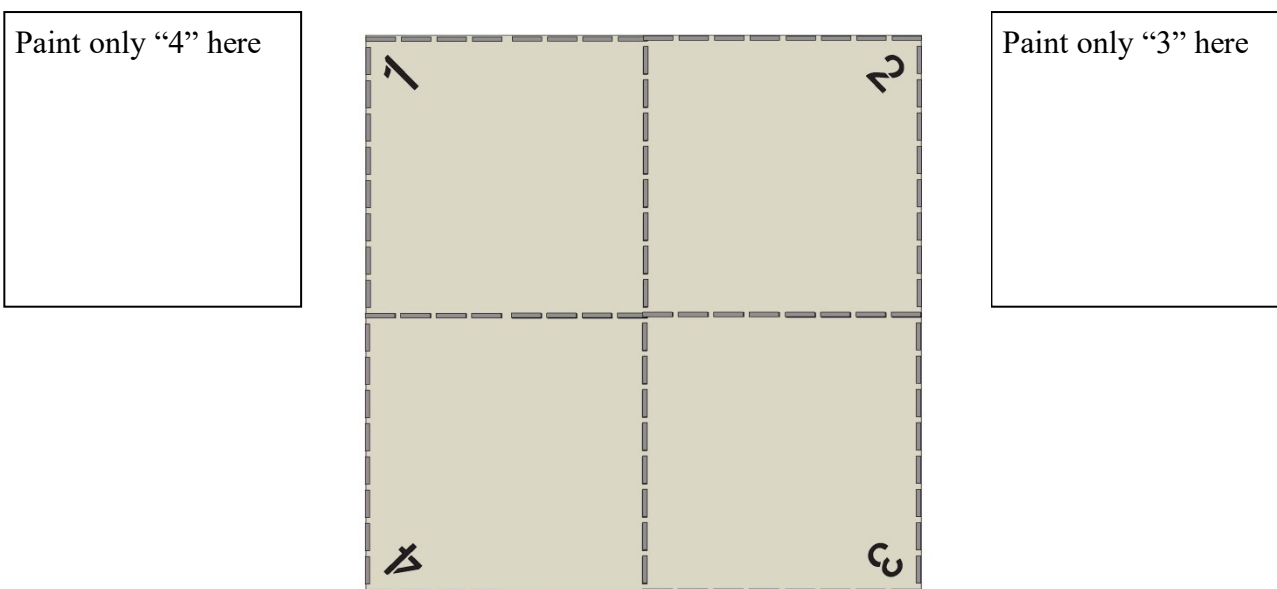
6. Use 9" rollers to fill in the fields of each quadrant with desired paint. Repeat paint to achieve desired vividness, drying after each application.



7. Take STENCIL A and STENCIL B and align corners over painted pavement as shown below, one at a time. (Note that there are different sequences of numbers that are typically used – some position the “1” across from the “4”). Use small brushes to paint numbers, repeating to desired vividness and drying after each application. Remove each stencil when fully dry.



8. It should then look like illustration below. Use small brushes to fill in the gaps along outlines if desired.



9. Allow all paint to dry for a minimum of 24 hours before use.

Any questions? We're here to help – call us at (800) 681-0684!