

APPLICATION INSTRUCTIONS

FOR THE

CHESS/ CHECKERBOARD

Using the Chess, Checkers and Borders: (LARGE),

Product Number: 11-1W-008

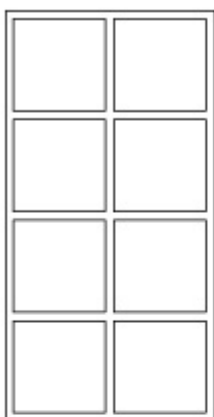
SIZE: approximately 15 feet each side

ESTIMATED PAINT TIME: approximately 2 – 4 people for 1-2 hours.

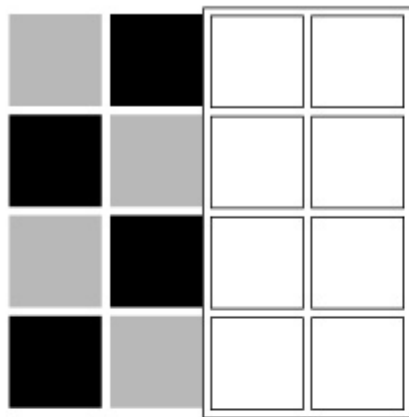
FIRST READ: Completely read "General Instructions". Prepare surfaces as recommended before painting.

1. Lay stencil in desired location. Using rollers, paint each square alternating colors, let dry and relocate stencil adjacent to painted squares as shown below on following steps, adding to each completed set of squares. (Or chalk out all squares for complete board then paint) Repeat this process to create 8 painted squares across and 8 squares down until it is complete as shown below, far.

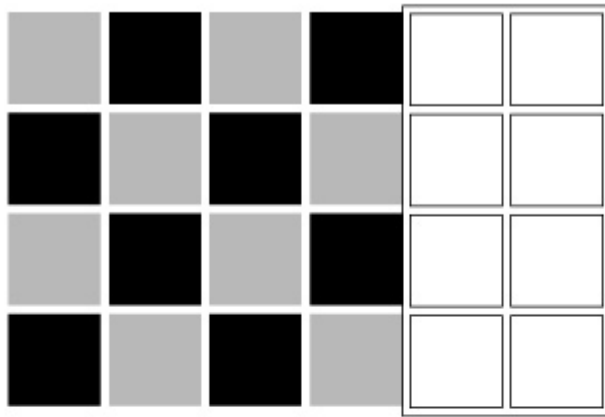
1



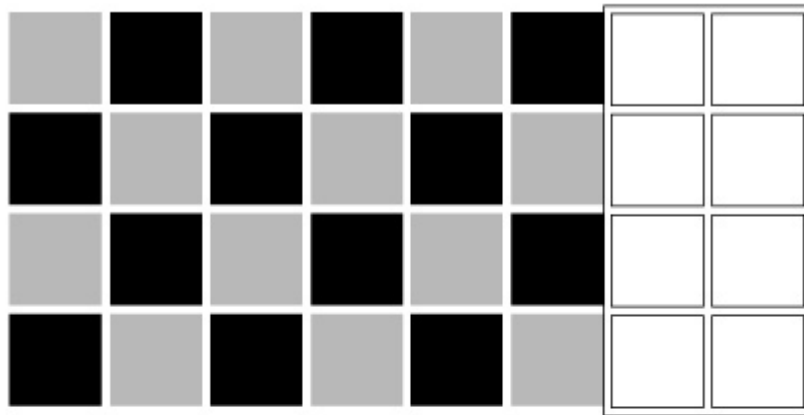
2



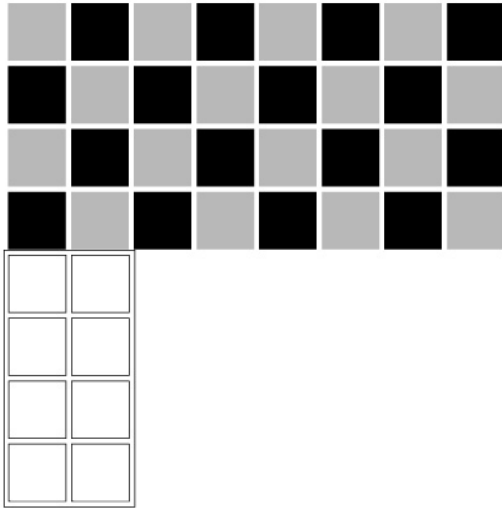
3



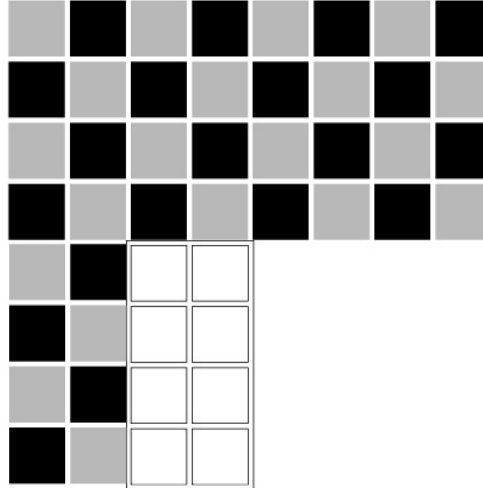
4



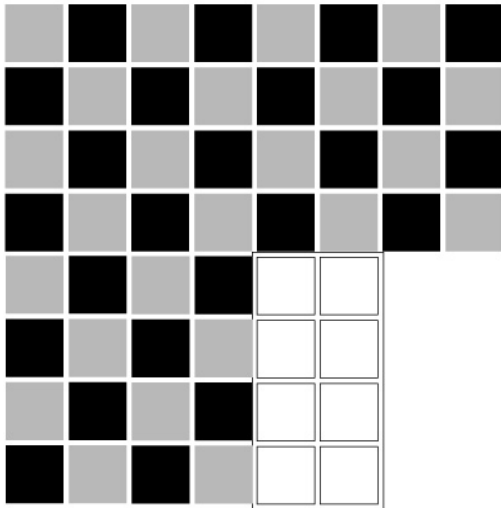
5



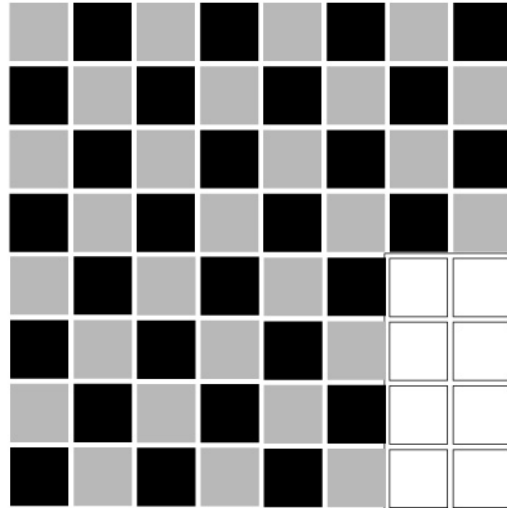
6



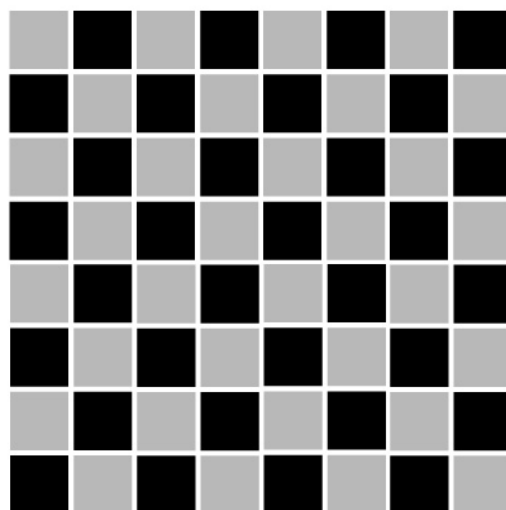
7



8



9





2. Repeat 1-2 more times to achieve desired vividness, drying after each application.
3. Allow to dry for 24 hours before use.

Any questions? We're here to help – call us at (800) 681-0684!



THIS INFORMATION IS COPYRIGHT MATERIAL. ALL RIGHTS ARE RESERVED.