



**ADVANCED
MANUFACTURING
TECHNOLOGY**

EST. 1996

WHO IS ADVANCED MANUFACTURING TECHNOLOGY?

- Beverage Industry leader developing the best technology in neck ring air conveying and guide rail positioning
- Design to order manufacturing partner
- Focus on R&D and testing to create engineered, continuously improving products
- Privately held since 1996

TURN KEY SOLUTIONS

- Design, Build, Install, Support

CORE PRODUCTS

- Plastic bottles
- Cans
- Cases
- Containers
- Caps
- Guide Rail Positioning



CONVEYOR TECHNOLOGY UPDATES

DECK AIR CONVEYOR

- Run containers efficiently that tip over on conventional table top conveyors
- Minimize the shingling jams, deck air jets pull bottles away rather than driving them into each other
- Nearly twice the accumulation per foot as table top conveyor, run non neck ring conveyable bottles at air conveyor speeds
- Reduce denting and bottle damage
- No chain to wear out



DECK AIR CONVEYOR

- Ideal for high speed conveyance of containers that are not suitable for neck ring air conveyor applications
- Significant accumulation advantages over table-top or vacuum conveyor
- Same air technology as AMT neck ring conveyor including patented sequencing damper technology
- Divert, merge, incline, and decline
- Adjustability for flex lines with Anysize top and side guides
- Trussed decks, permit very high guide tolerances, key for running difficult containers.



TABLE TOP

- Engineered systems with full controls integration available
- Heavy duty formed steel frame construction
- Vacuum ready, bolt on vacuum plenum
- Fully flexible with optional Anysize S150 guides

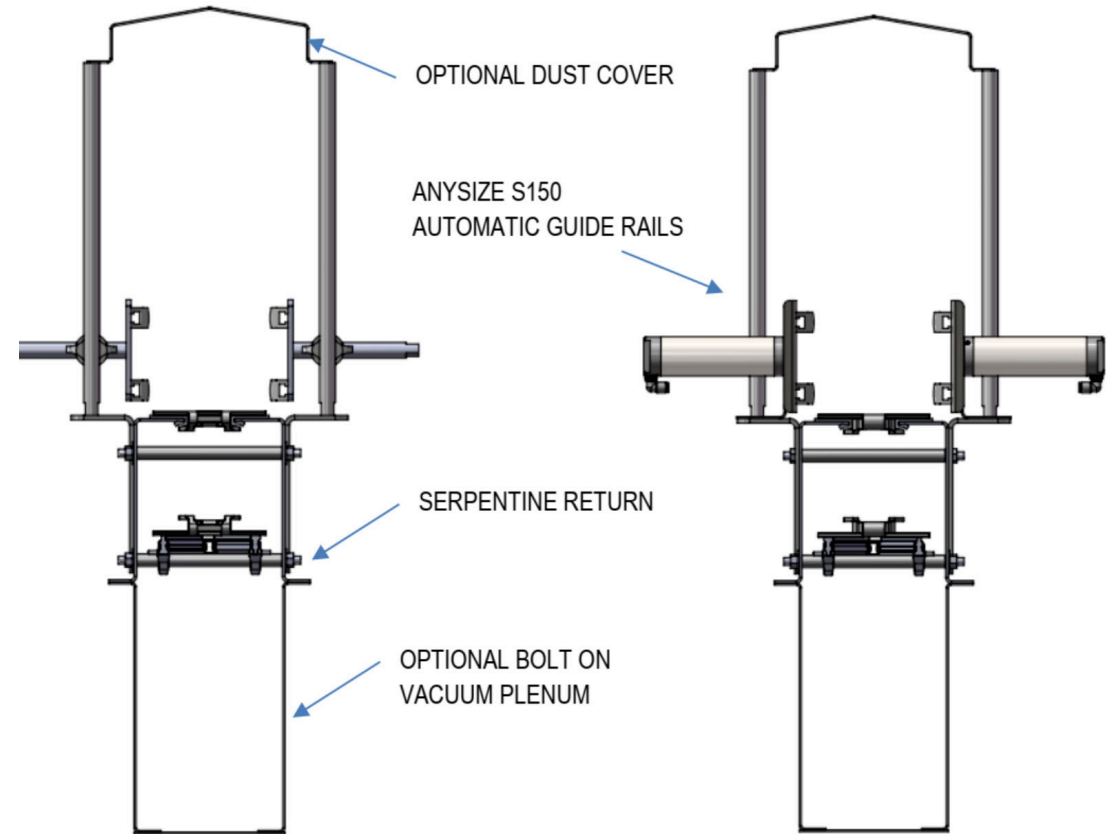


TABLE TOP

- All devices available
- Continuous motion gates
- Multilane conveyor and row formers
- Single filers and slow downs
- Accumulation table and alpiners



ANYSIZE UPDATES

S125

- Very high force (4x an S200)
- For high line pressure applications
- Ideal for full bottles prone to shingle

S150

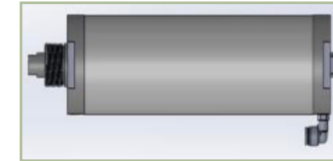
- Most compact and cost effective
- S200 equivalent force and accuracy
- Easy to retrofit on table top and cable

S300

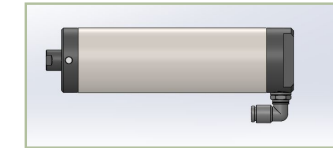
- Compact with a longer stroke
- S200 equivalent force and accuracy
- Ideal for vertical adjustment, 316L

S400

- Top guide adjustment
- High force and 1mm accuracy
- Ideal for deck air top conveyors



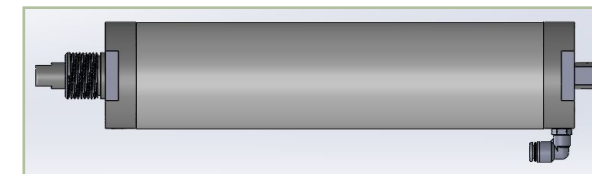
S125 NM



S150



S300 NM



S400 NM

GEN 4 RAD BOX

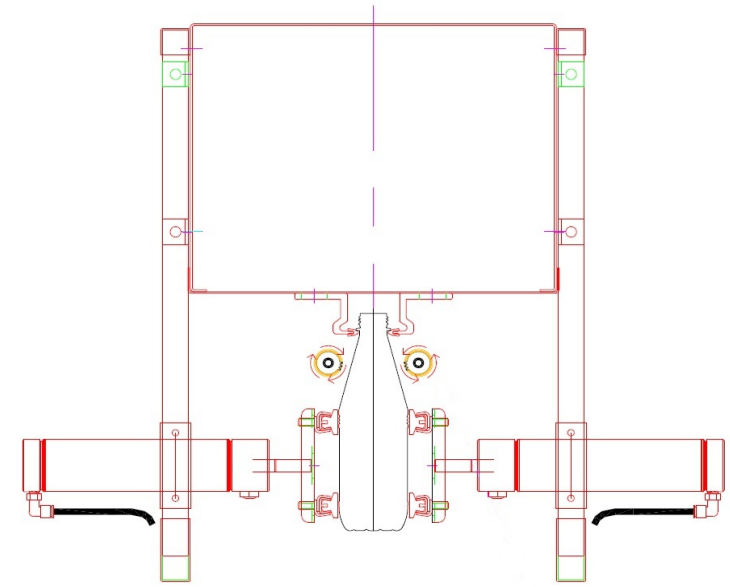
REGULATED AIR DISTRIBUTION

- Automatic jam breaking capability
- Instant independent control of each control zone
- Automatic leak detection



DYNAMIC SHOULDER RAIL

- Most effective method to prevent neck jams on angle top bottles
- Anysize, two position or manual adjust
- Unpowered rollers limit bottle swing



DYNAMIC SHOULDER RAIL



- Dynamic rail disengaged
- Tilt angle = 47 degrees
- Prone to heel jam and neck lock jams

The shoulder angle on this bottle is too steep for a standard shoulder rail, bottles become wedged



- Dynamic rail engaged
- Tilt angle = 28 degrees
- No jams

Bottles cannot wedge in the dynamic rail

X-Y ANYSIZE SCUFF PREVENTION

- Specialty angled rail extrusion contacts only the base bumper
- No side rails contact the body panel, scuffs are not possible
- Anysize automatically adjusts guides in both X and Y direction for any bottle height
- Anti-scuff rail may be retrofitted without X-Y for single product lines
- X-Y Anysize is available for standard guide rail, run any bottle with a single rail



SKY BLUE ULTREX NECK GUIDE

- High performance and long life
- Ultra high performance impregnated lubricant
- Long term testing results
- “Wears like ‘Grey,’ performance like ‘Green’”

ADDITIONAL EQUIPMENT

- Full line of mechanical conveyance, table top, mass, full & empty
- Vacuum conveyor, elevators, mass, can
- Cooling tunnels, standard design for table top
- Ionized air rinsers, retrofit and new for cans or PET bottles

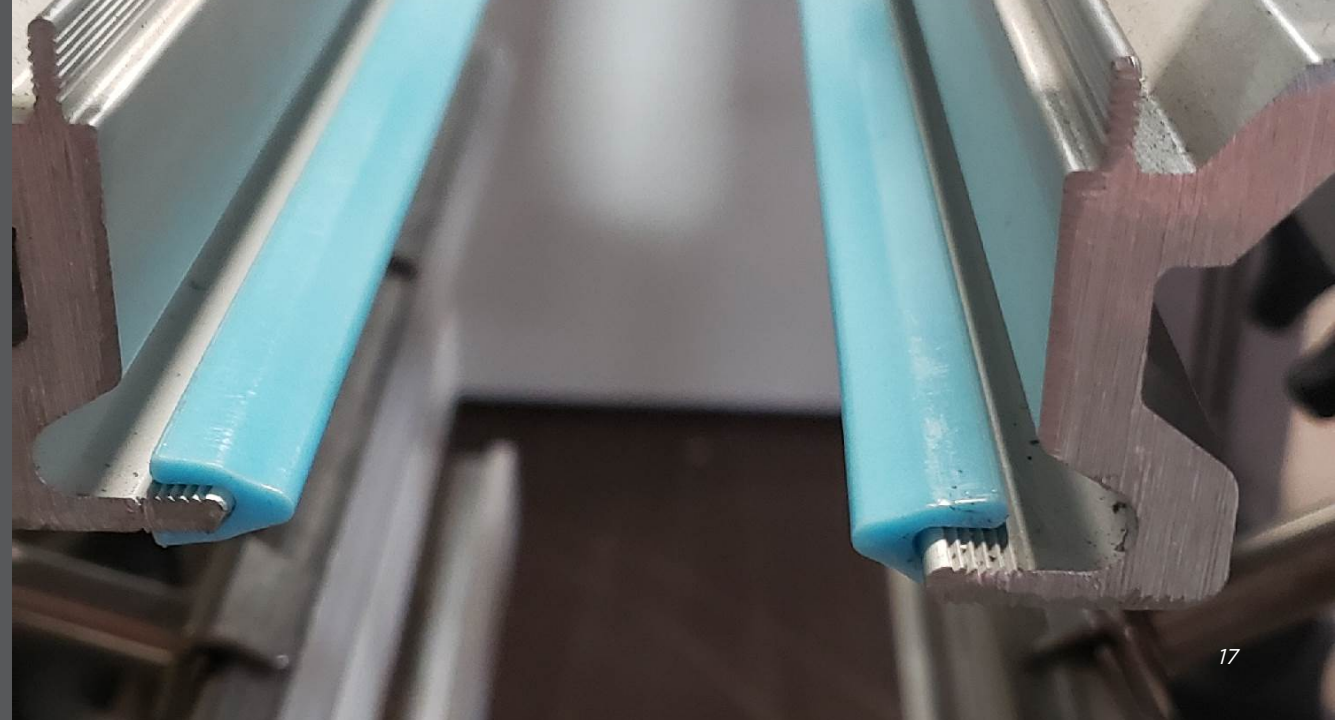
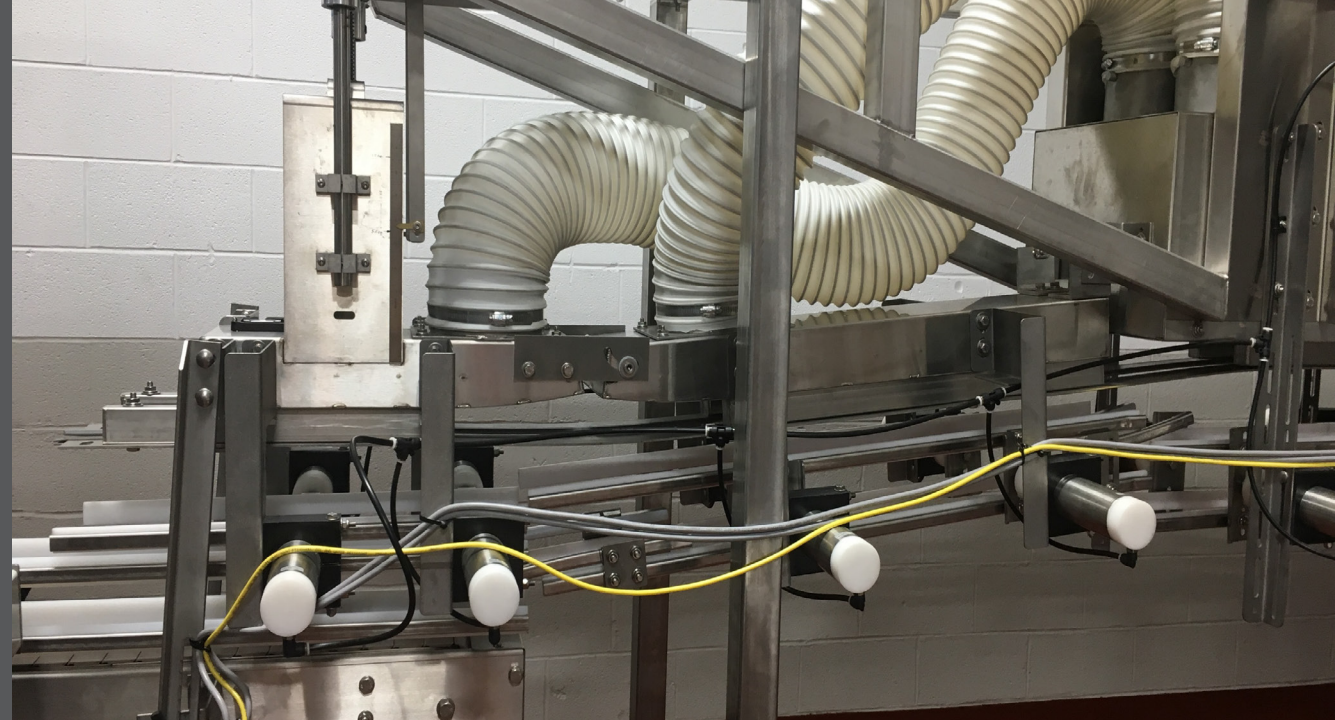


EXISTING LINE IMPROVEMENT SERVICES RETROFITS & RECONFIGURATION

MAKING THE MOST OF WHAT YOU'VE GOT

LINE UPGRADES AND RECONFIGURATIONS

- Reconfigure AMT or ANY other empty bottle handling conveyance equipment
- Service and rebuild Zecchetti equipment including palletizers
- Spare parts for existing and unsupported systems
- Retrofit existing lines with Anysize® for complete flexibility
- Demo and store equipment for future lines at AMT



BOTTLE TESTING

- AMT maintains a fully flexible neck ring air conveyor test loop at our Loveland factory
- Anysize neck and side guides allow for quick testing of your product
- A written report and video will be provided if bottles are sent in, or customers are welcome to visit our facility in person



AMT SERVICE

30 person department with 100's of years combined packaging industry experience

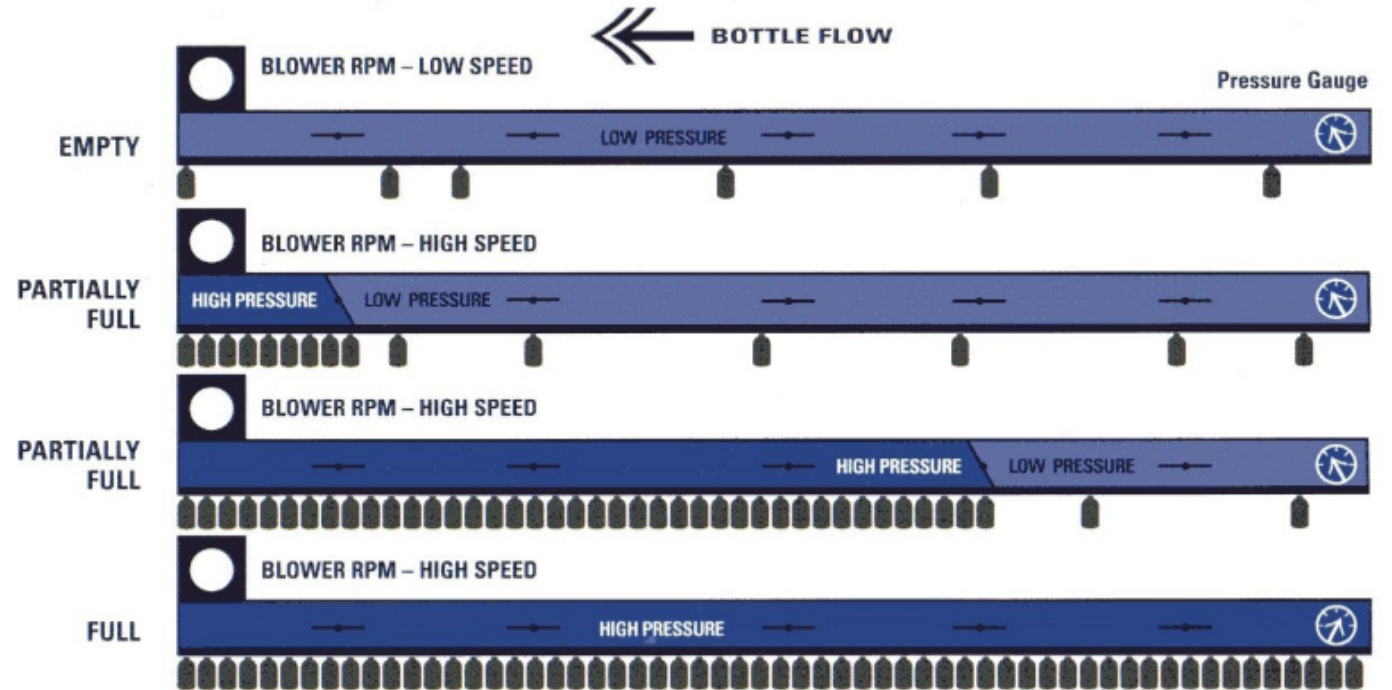
- Mechanical and electrical installation
- Problem solving
- Programming service

SEQUENCING DAMPERS

THE KEY TO HIGH SPEED

HANDLING OF LIGHTWEIGHT BOTTLES

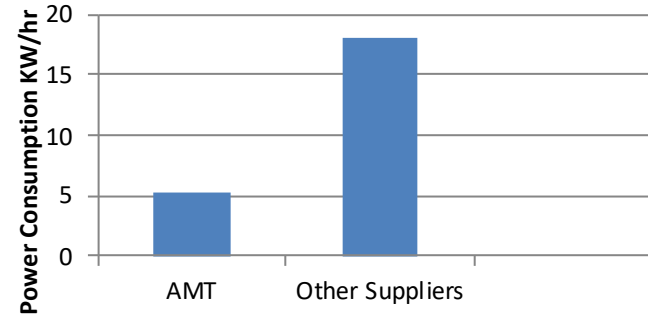
- Global setting
- US Patent 6,000,884 and 6,309,144
- Bottles back up from front to back
- As the accumulated portion extends the dampers sequence to keep high pressure over the accumulated areas
- Never has 'dampers in series,' only one damper closed at a time



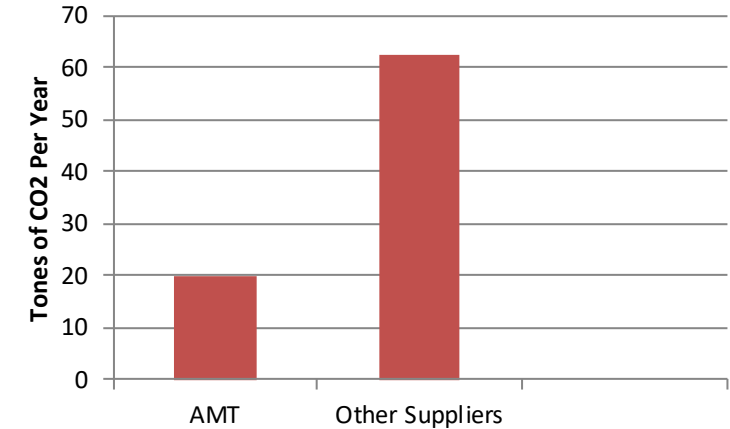
SUSTAINABILITY ENERGY SAVINGS

- AMT Neck Ring air conveyor is the most energy efficient air conveyor available, 0.05 hp/ft
- \$6,500- Average annual energy savings by replacing existing lines with new AMT Air Conveyor
- 84,000 lbs. - CO2 emissions savings

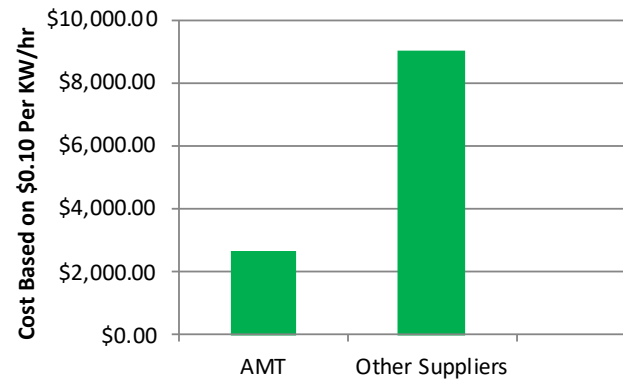
Power Required for an Average 400' Line



Annual CO2 Emissions



Annual Running Cost, 5000 hrs.



PROPOSAL PROCESS



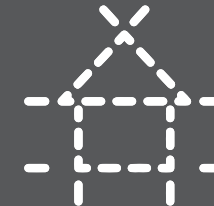
RFP

- General project scope
- Who, what, when, where, why?



DEVELOP

- Layout review & modifications
- Rate calculations, R&D, initial Sequence of Operations



PROPOSAL

- Document with reference drawing
- Initiate follow up review toward project goals

CONTACTS

SALES CONTACTS:

Dawn Fulkerson

970-612-0315 x140

dfulkerson@amtcolorado.com

970-203-4245 Cell

Steve Walker

970-612-0315 x148

swalker@amtcolorado.com

970-576-4794 Cell

Rebecca Tolbert

970-612-0318 x127

rtolbert@amtcolorado.com

FOUNDER:

Tom Ingraham

tingraham@amtcolorado.com

REQUEST FOR QUOTES:

rfq@amtcolorado.com



AMTCOLORADO.COM

3920 PATTON AVE, LOVELAND, CO 80538, USA