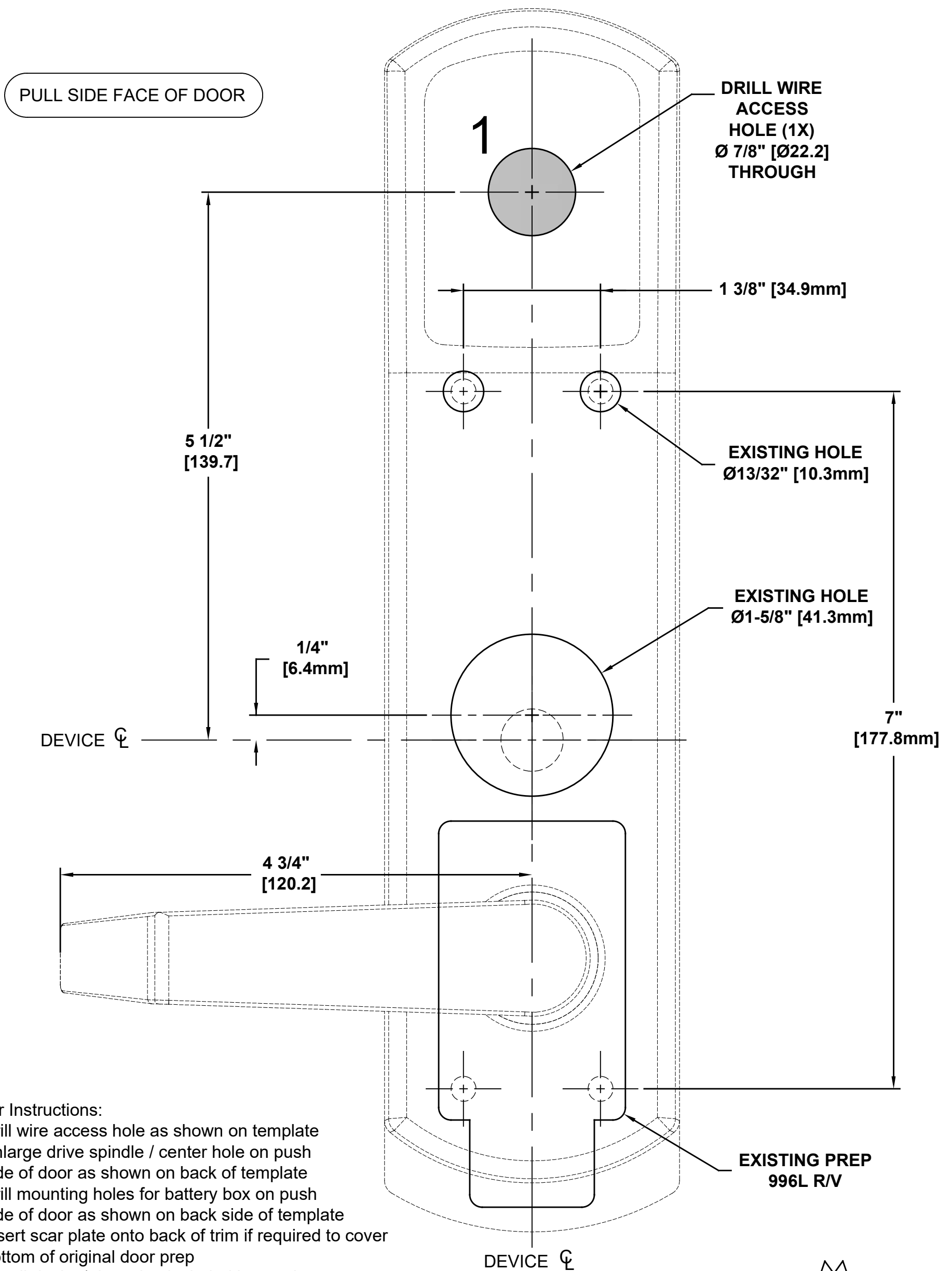


VD1 - 6EWS RETROFIT KIT TEMPLATE

FOR REPLACING VD98,99/996 WITH 6200/6EW

TEMPLATE: 629335
REV.0 12-09-19



Adapter Instructions:

1. Drill wire access hole as shown on template
2. Enlarge drive spindle / center hole on push side of door as shown on back of template
3. Drill mounting holes for battery box on push side of door as shown on back side of template
4. Insert scar plate onto back of trim if required to cover bottom of original door prep
5. Install device/trim using included instructions
6. Drill & tap strike mounting holes as shown on back side of template

Notes:

1. Verify template is printed to scale
2. Height of Escutcheon = 11-25/32" [299.2]
Width of Escutcheon = 2-31/32" [75]
Trim Projection = 3-1/8" [79.4]



PDQ Manufacturing
2230 Embassy Dr.
Lancaster, PA 17603
833-273-7832
833-2 PDQTECH
www.pdqlocks.com

VD1 - 6EWS RETROFIT KIT TEMPLATE

FOR REPLACING VD98,99/996 WITH 6200/6EW

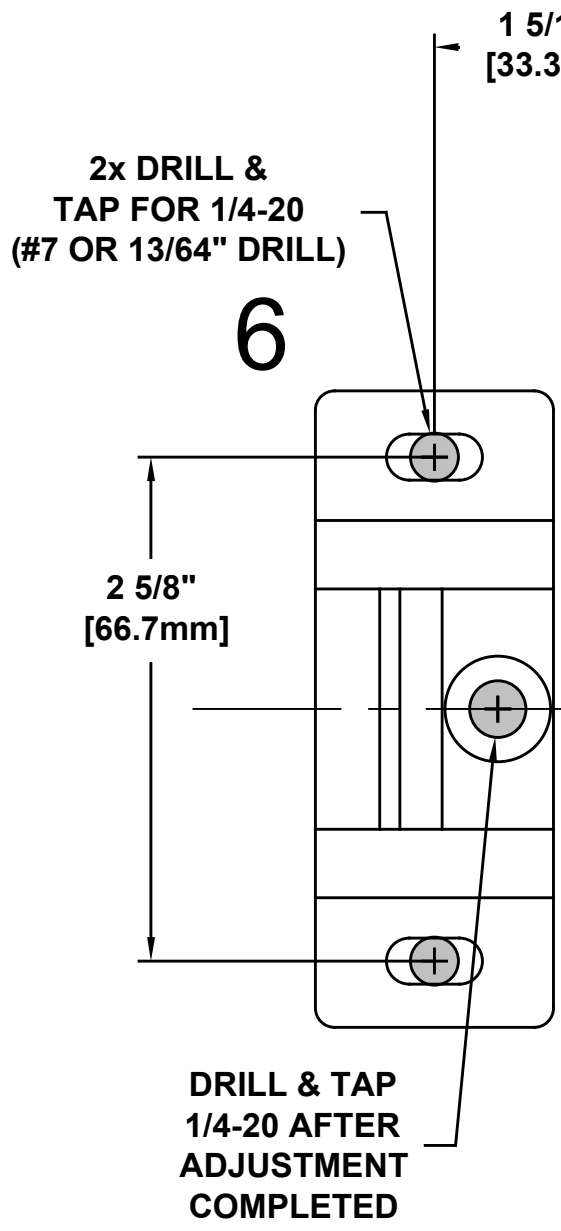
TEMPLATE: 629335
REV.0 12-09-19

BATTERY BOX PREP FOR 6EWS RIM DEVICE TRIM

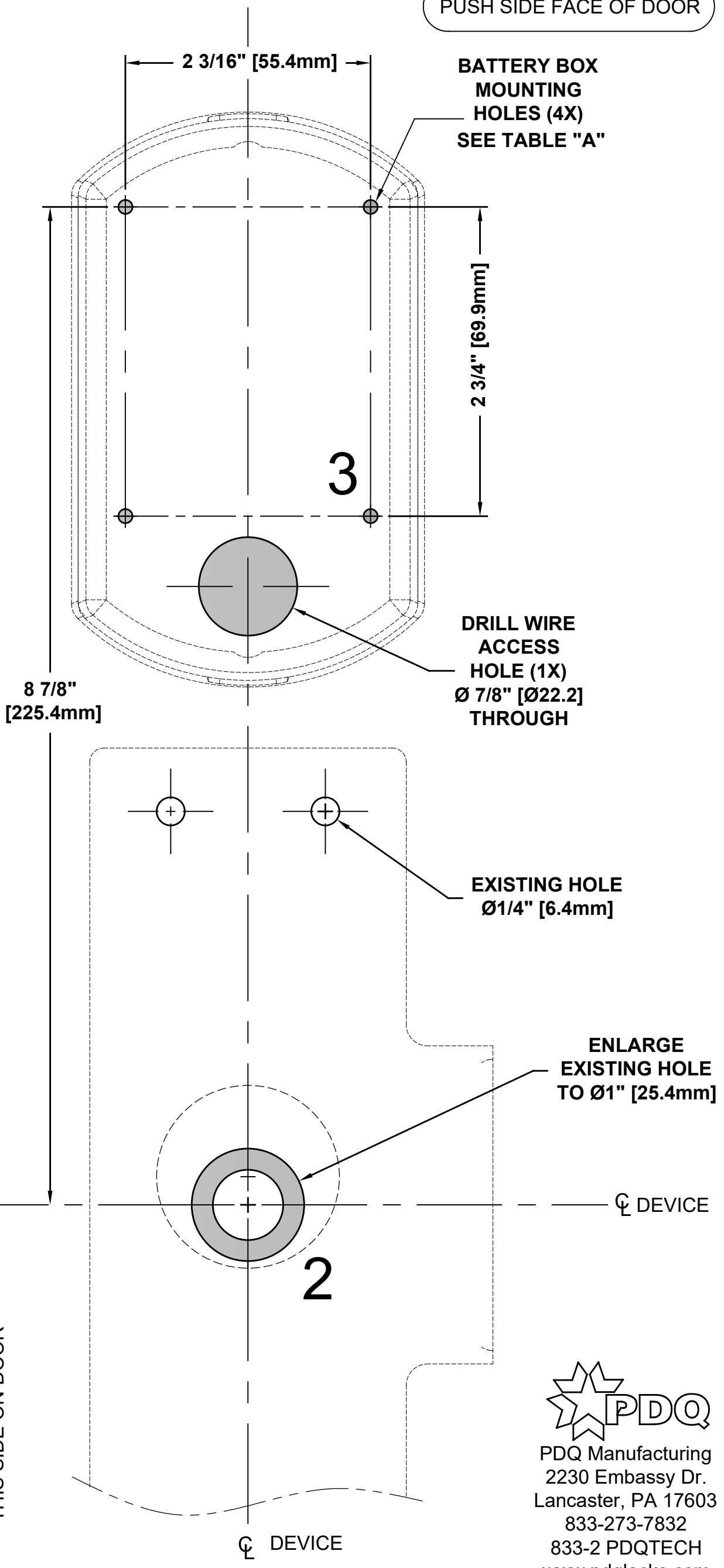
FOLD HERE

PUSH SIDE FACE OF DOOR

TABLE "A"
METAL DOORS: USE 7/64" [2.8] PILOT DRILL
WOOD DOORS: USE 1/8" [3.2] PILOT DRILL



THIS SIDE ON FRAME STOP
THIS SIDE ON DOOR




PDQ Manufacturing
2230 Embassy Dr.
Lancaster, PA 17603
833-273-7832
833-2 PDQTECH
www.pdqlocks.com