

# GREATER GREEN BAY



South Packerland Drive (CTH EB), Village of Ashwaubenon/Green Bay

## Site description

- Shovel-ready site
- Price per acre: Negotiable
- 17.7 acres
- Completed wetland delineation
- Zoned business park
- 3 miles from international airport

To learn more, contact  
Kelly Armstrong, vice president  
of economic development,  
Greater Green Bay Chamber at  
**920.496.2113** or  
**[karmstrong@greatergbc.org](mailto:karmstrong@greatergbc.org)**



GREATER GREEN BAY  
CHAMBER



# Global brands

**Humana**

2,846 employees

**SCHNEIDER**

2,626 employees

**GP**  
**Georgia-Pacific**

1,937 employees

**AMERICAN**  
**FOODS GROUP**

1,592 employees



**GREEN BAY PACKAGING**

1,187 employees

**Schreiber**

750 employees



503 employees

**P&G**

593 employees

**ProAmpac**

452 employees

**PC**  
**Paper Converting**  
**Machine Company**

700 employees

## Utilities

### • Gas and electric

- Provided by Wisconsin Public Service



### • Water

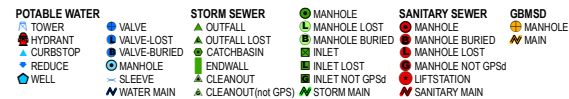
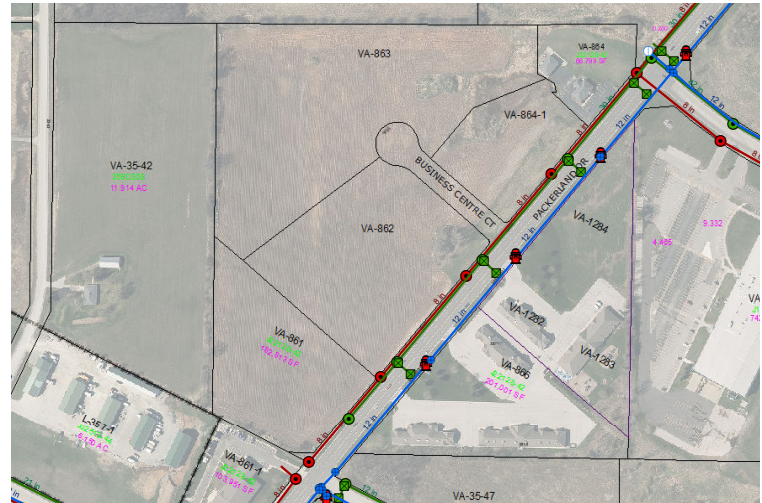
- -12" line size
- Provided by Village of Ashwaubenon/ Green Bay Water Utility

**ASHWAUBENON**



### • Sewer

- - 8" line size
- Provided by Village of Ashwaubenon/ NEW Water



## Transportation

### • Highways

- Interstate 41 within 2 miles

### • Airport

- Green Bay Austin Straubel International Airport within 3 miles

### • Drivetime guidelines in relation to

- Chicago - within 3 hours
- Minneapolis - within 4 hours

