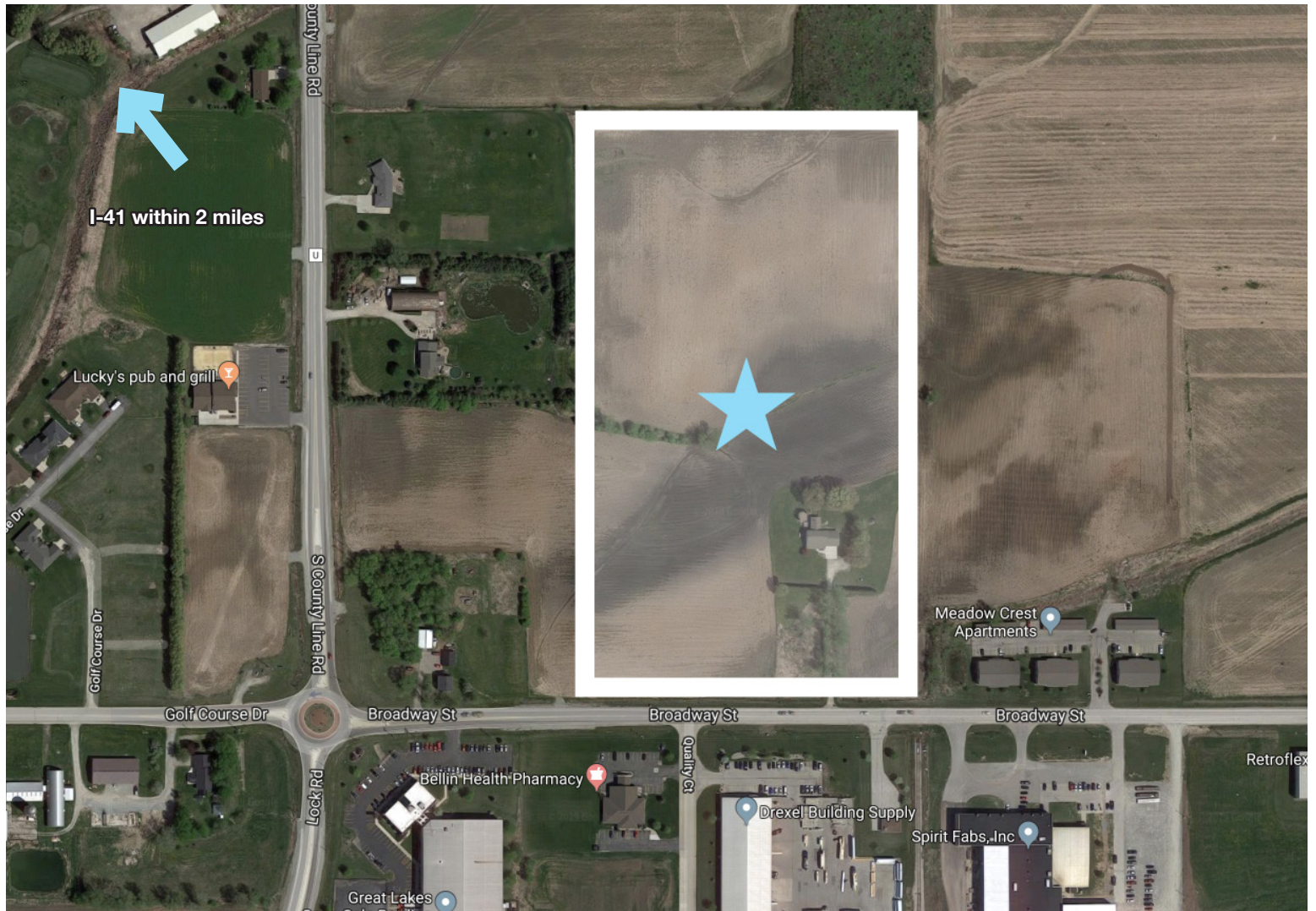


# GREATER GREEN BAY



## Site 2 description

- 21.46 acres
- \$37,000 per acre
- General Commercial, Light Industrial or Manufacturing
- Environmental Studies/Wetland Delineation Available
- Rail access possible
- More than 1 million people within an hour drive time

To learn more, contact Kelly Armstrong,  
vice president of economic development,  
Greater Green Bay Chamber at  
**920.496.2113 or**  
**[karmstrong@greatergbc.org](mailto:karmstrong@greatergbc.org)**



GREATER GREEN BAY  
CHAMBER

# Global brands

**Humana.**

2,846 employees

**SCHNEIDER**

2,626 employees

**GP**  
**Georgia-Pacific**

1,937 employees

**AMERICAN**  
**FOODS GROUP**

1,592 employees

**GB**  
**GREEN BAY PACKAGING**

1,187 employees

**Schreiber**

750 employees

**Nature's**  
**Way**

503 employees

**P&G**

593 employees

**ProAmpac**

452 employees

**PC**  
**Paper Converting**  
**Machine Company**

700 employees

## Utilities

### • Gas and electric

- WPS

**WPS**  
**Wisconsin Public Service**

### • Water and sewer

- Provided by Village of Wrightstown
- 10" sewer line size
- 12" water line size

**Wrightstown**  
*Village on the Fox*



## Transportation

### • Highways

- Interstate 41 within 2 miles
- Interstate 43 within 20 miles

### • Airport

- Green Bay Austin Straubel International Airport within 15 miles

### • Drivetime guidelines in relation to

- Chicago - within 3 hours
- Minneapolis - within 4 hours

