

GREATER GREEN BAY



Site description

- 51 Acres
- \$25,000 per acre
- Certified Site -Environmental studies available
- Industrial zoning (or equivalent)
- More than 1 million people within an hour drive time

To learn more, contact Kelly Armstrong,
vice president of economic development,
Greater Green Bay Chamber at

920.496.2113 or
karmstrong@greatergbc.org



GREATER GREEN BAY
CHAMBER

Global brands

Humana.

2,846 employees

SCHNEIDER

2,626 employees

GP
Georgia-Pacific

1,937 employees

AMERICAN
FOODS GROUP

1,592 employees



GREEN BAY PACKAGING

1,187 employees



Schreiber

750 employees



503 employees

P&G

593 employees

ProAmpac

452 employees

PC
Paper Converting
Machine Company

700 employees

Utilities

• Gas and electric

- Provided by Wisconsin Public Service

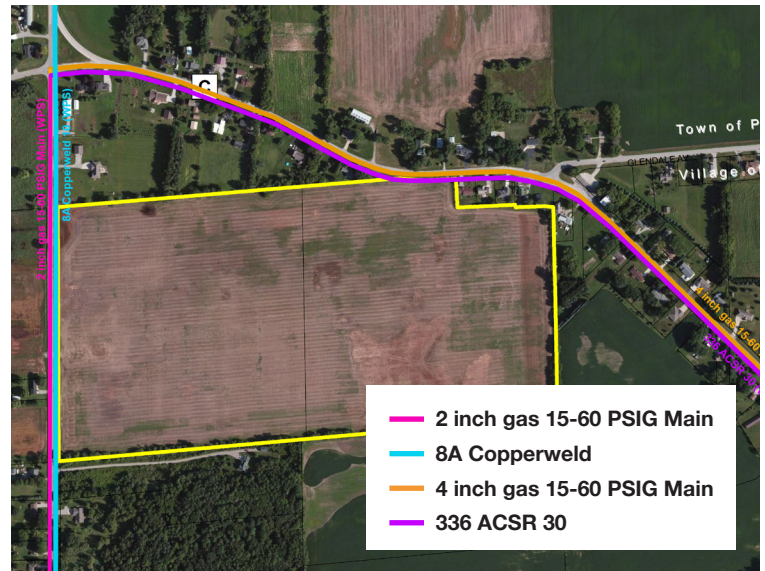


• Wastewater

- 30" sewer line with four access points
- Capacity of 151,000 gal/day

• Water

- 16" 60 psi water main runs 1 mile SE



Transportation

• Highways

- Access via Hwy 29
- Interstate 41 within 6 miles
- Interstate 43 within 9 miles

• Airport

- Green Bay Austin Straubel International Airport within 9 miles

• Drivetime guidelines in relation to

- Chicago - within 3 hours
- Minneapolis - within 4 hours

