

DESIGNED FOR USE WITH SITTER ON CUE PRO FALL MONITOR

Before You Begin:

You can connect the Sitter On Cue PRO Fall Monitor to your facility nurse call system when you connect the Posey Nurse Call Adapter. This allows you to add the options associated with your specific nurse call system such as nursing station notification and patient room lights & sounds. With this feature, the fall monitor can be:

- Silenced in patient's room to reduce roommate disturbance ("Mute")
- Set for "Voice Only"

NOTE: Fall Monitor automatically switches to "Voice and Tone" if Nurse Call Adapter is unpaired from the Fall Monitor. This ensures in-room voice and tone notice to staff if patient attempts to rise when Nurse Call Adapter is no longer paired to the fall monitor.

NOTE: For further instructions on configuring the Fall Monitor to operate with normally open and normally closed nurse call system or to operate the Fall Monitor in latching mode, see the Sitter On Cue PRO Fall Monitor instruction manual.

Instructions:

1. Battery Installation

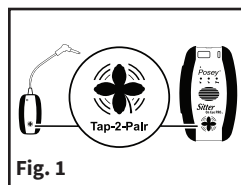
- Press down and slide the battery compartment door completely off. Set battery door aside.
- Insert two (2) new "AA" alkaline batteries. Take care not to damage battery contacts.
- Reattach the battery compartment door. Slide it shut, securing it into place.

NOTE:

- Fresh alkaline batteries have an estimated life of 30 days of daily use. Replace batteries when prompted by the Fall Monitor audio cue.
- Dispose of used batteries per facility policy. Be sure to follow all laws that apply.
- Nurse Call Adapter may also be powered using the Posey RP8383 AC power adapter.
- Optionally, the Nurse Call Adapter may be connected to an AC power adapter with the following specifications:
 - Voltage: 9VDC
 - Current: 500mA min
 - Connector: 5.5mm OD x 2.5mm ID x 10-12mm L, center positive
 - UL Listed

2. Pair Fall Monitor to Nurse Call Adapter

- Turn on Sitter on Cue PRO Fall Monitor.
- Turn on Nurse Call Adapter. Adapter light will flash yellow.
- Locate and align pairing icons together. Continue to hold Fall Monitor and Nurse Call Adapters together until beep is heard (Fig.1).
- Adapter light turns blue when paired.



3. Connect Adapter to Nurse Call Interface

- Plug Nurse Call Adapter into facility's nurse call system port.
- The Nurse Call Adapter may optionally be secured in place using the cable bracket provided. Press NCA cable into cable bracket. Remove backing paper. Press to adhere cable bracket onto clean, dry, smooth surface.

4. Testing Nurse Call Adapter

- Pair or connect sensor to Fall Monitor.
- Apply pressure to pad or fasten belt to activate sensor.
- Release pressure or unfasten belt to activate alarm.
- Fall Monitor and nurse call system should alarm.
- Press HOLD on Fall Monitor and silence nurse call system, if necessary.
- If Posey Fall Monitor fails to alarm, test with new sensor. If Fall Monitor still fails to alarm, reference Posey Sitter On Cue PRO Fall Monitor Instructions for Use.



Posey Nurse Call Adapter

REF 8282WL – Nurse Call Adapter – Wireless

Cleaning

Dampen (but DO NOT soak) a clean cloth with disinfectant. Use extra care to clean adapter and cord. To reduce the risk of damage, NEVER use any cleaning substance that contains Phenol, immerse in liquid, or sterilize with heat. Use a clean, DRY cloth to dry all parts.

Storage

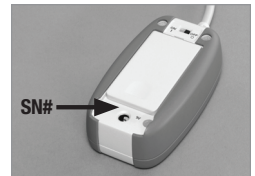
Store in ambient temperatures and humidity levels (10-50%).

Warranty and Useful Life

This product is warranted and has a useful life of four years from date of manufacture. The year of manufacture is located on the back of the unit. It is the first two digits after the (21) prefix of the serial number. If Nurse Call Adapter is found to be beyond 4 years from manufacture, please contact Customer Service.

Example: Serial Number

(21)1944KQ1105 = 2019 as year of manufacture.



⚠ WARNING

Ensure the Nurse Call Adapter is paired to the Fall Monitor (blue light means paired) and plugged into the nurse call system port before leaving the patient unattended.

- DO NOT stretch or strain cable to avoid possible damage and malfunction.
- ALWAYS position the device so that moving parts (side rails, wheels, etc.) will not cause strain or damage the cable.
- DO NOT wrap or bend the cable tightly during storage.
- ALWAYS remove the cable by pulling on the plug. DO NOT pull on the cable.
- ALWAYS install a completely new set of batteries and DO NOT mix battery brands.
- DO NOT use the adapter if battery damage or corrosion is observed.

May be patented: see www.tidiproducts.com/virtual-patent-marking

Learn more and access the Instructions For Use video by scanning the QR code.



The complete Posey Fall Monitor and sensor manuals can be found at www.tidiproducts.com

TIDI Products, LLC • 570 Enterprise Drive • Neenah, WI 54956 USA
www.tidiproducts.com • Tel 1.800.447.6739 • Fax 1.800.767.3933

M6276 Rev A 06252021



© TIDI Products, LLC. All rights reserved. (TM) and (R) are registered trademarks of TIDI Products, LLC.