

# CAMCODE<sup>®</sup>

Durable Bar Code Solutions

## **CAMCODE:** WHY EFFICIENT ASSET & MAINTENANCE MANAGEMENT BEGINS WITH WORLD-CLASS ASSET TAGGING



Powered by BPD Zenith

Presented by Sarah Brady & Lou Peeples | July 1st, 2021



# CAMCODE: WHY EFFICIENT ASSET & MAINTENANCE MANAGEMENT BEGINS WITH WORLD-CLASS ASSET TAGGING



Sarah Brady

## BPD Zenith - Intro

- Why has demand and awareness increased?
- Value & Benefits overview



Lou Peeples

## Camcode – World Class Asset Tagging

- About Camcode
- Software & CMMS Implementation
- What is a labels purpose?
- Problems Bar Code Tags Solve
- Considerations
- Tagging Strategy
- Label Installation
- Packaging & Customization
- Camcode Clients and Use Cases

## AGENDA

# **CAMCODE:** WHY EFFICIENT ASSET & MAINTENANCE MANAGEMENT BEGINS WITH WORLD-CLASS ASSET TAGGING

## **Recorded – On Demand**

- Available post-event

## **How to Take Part**

- Submit questions
- Polls
- Q&A

## **Available Materials**

- Download or Request

*Feedback Survey (Post Event)...*

# **WELCOME - HOUSEKEEPING**



# BPD ZENITH

- Over 26 years experience providing Enterprise Asset Management
- Clients in every industry, on every continent
- Platinum IBM Business Partner
- Award winning Solutions and Services



BPD ZENITH



POWERED BY  BPD ZENITH



Offshore Wind & Renewables



Facilities Management



Public Sector



Transportation



Oil & Gas



Manufacturing



Life Sciences



Power Generation & Utilities

# BPD ZENITH

- Over 26 years experience providing Enterprise Asset Management
- Clients in every industry, on every continent
- Platinum IBM Business Partner
- Award winning Solutions and Services



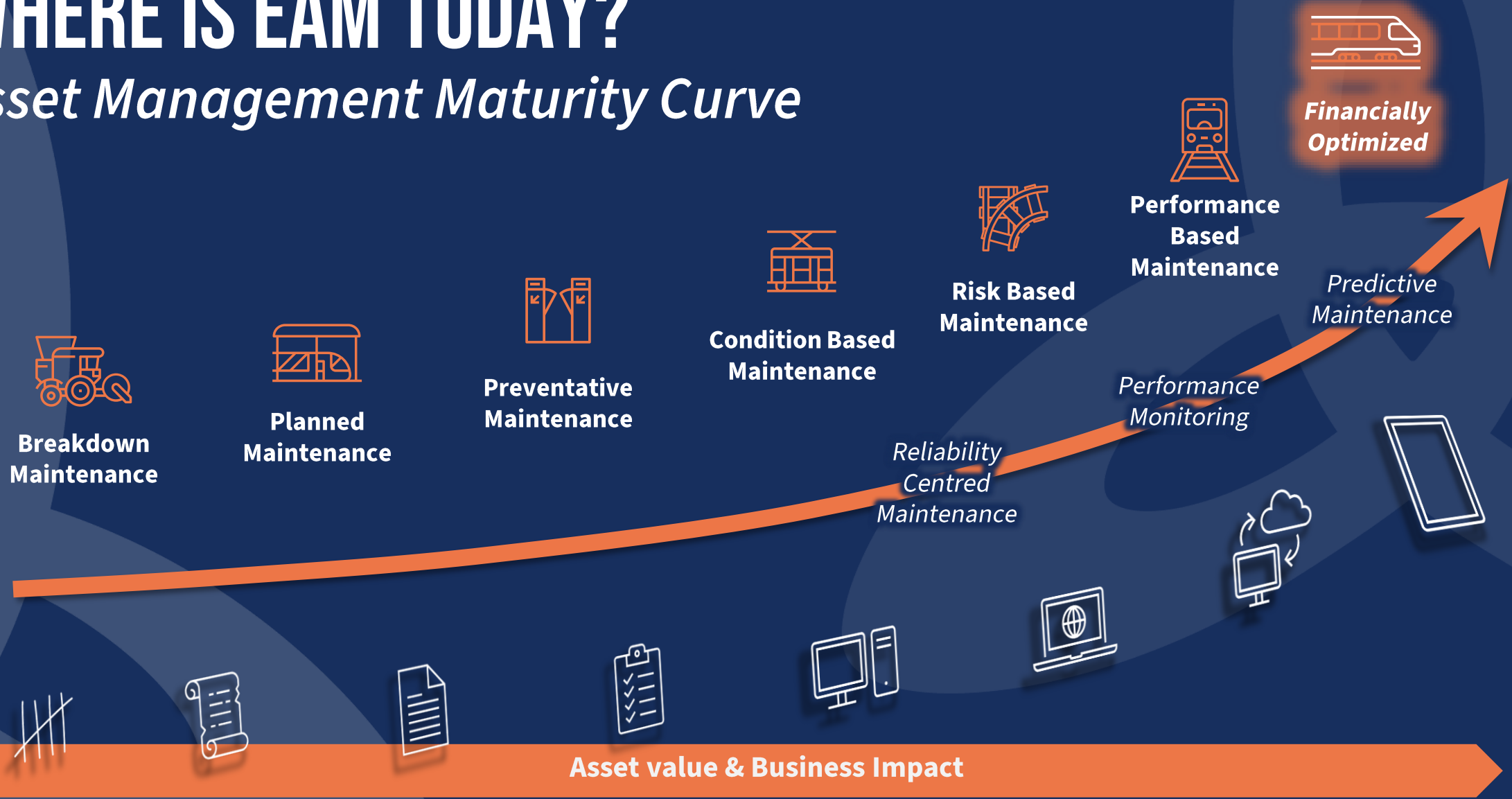
BPD ZENITH



POWERED BY  BPD ZENITH

# WHERE IS EAM TODAY?

## Asset Management Maturity Curve



# **CAMCODE:** WHY EFFICIENT ASSET & MAINTENANCE MANAGEMENT BEGINS WITH WORLD-CLASS ASSET TAGGING



**Lou Peeples**

# **CAMCODE**®

Durable Bar Code Solutions



# Why efficient Asset and Maintenance Management begins with World Class Bar Code Labels



- Lou Peeples  
[lpeeples@camcode.com](mailto:lpeeples@camcode.com)



# Camcode

- Camcode was established as a division of Horizons in 1979
- Formed Camcode Global (subsidiary in the United Kingdom) in 2012 to service the Defense industry
- Camcode produces durable bar code solutions for asset tracking applications in the Auto ID marketplace



\*Confidential Information\*

Camcode and Metalphoto are Registered Trademarks of Horizons Incorporated

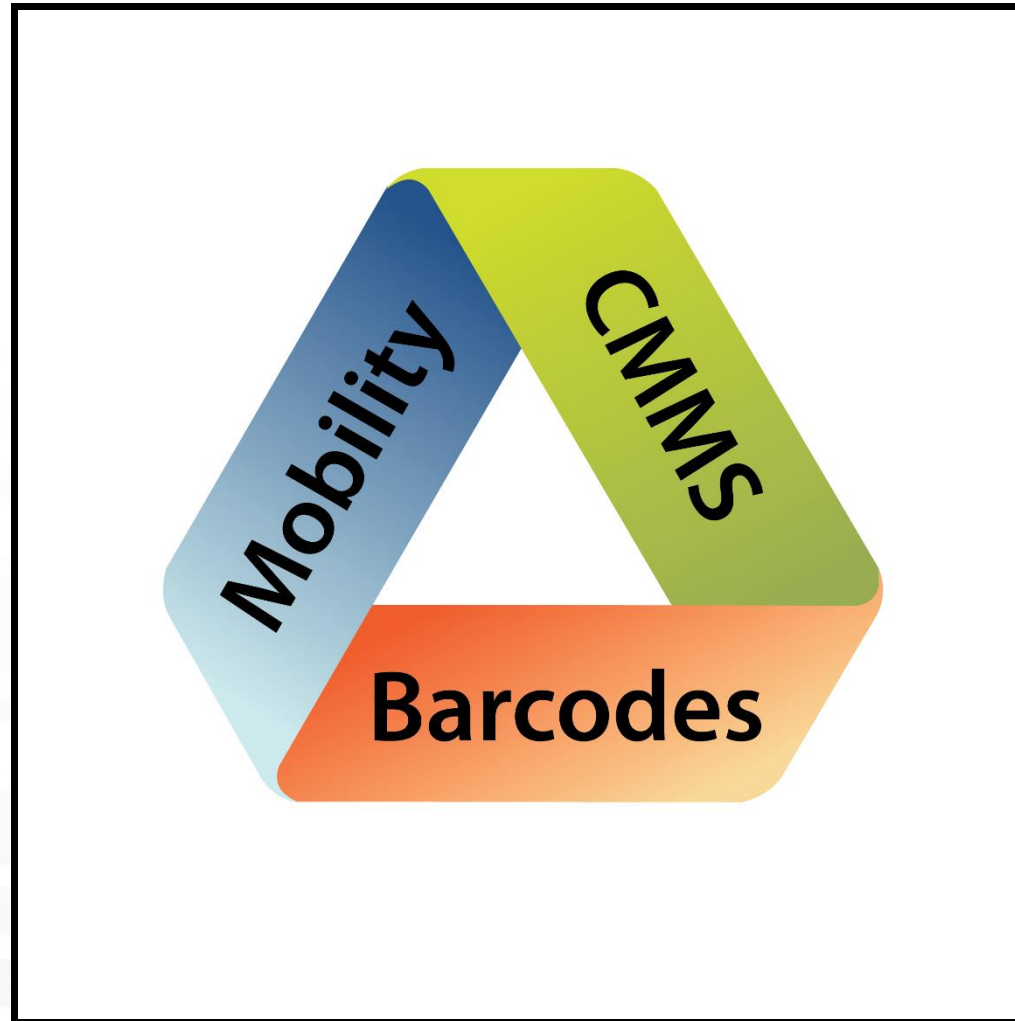
**CAMCODE**<sup>®</sup>  
Durable Bar Code Solutions

# Software ~ Levels of Complexity

- Most basic level - Asset tracking
  - Is the asset there? For accounting.
- Next level – CMMS/Inspections
  - CMMS (Computerized Maintenance Mgt System)
    - Preventive maintenance
    - Generating work orders
    - Operator rounds



# CMMS Implementation



# What is a labels purpose?

Whether the label is for a utility pole, gas meter, solar panel, computer, plant production assets, **Bar Code labels are license plates to access a record for that asset in a database.**



# Problems Bar Code Tags Solve

- 100% database accuracy
  - No more keystroke mistakes
  - Assets are identified correctly 85% of the time.\*
- More easily find assets with bar code tag
  - Average time to find the asset information in Maximo including work orders is 9 min.\*
- \*actual Maximo customer data

# Problems Bar Code Tags Solve

- More accurate maintenance tracking
  - Start/stop times.
  - Faster reaction times
- Opportunity to clean-up database
  - Re-associate physical assets.
- Tags not lasting, reprints etc
  - 20+ years
  - Using the correct tag on the correct asset

# Considerations

- **Durability:** sunlight, chemicals, heat...
- **Attachment:** adhesives, rivets, ties...
- **Form Factor:** size, thickness, material...
- **Data:** structure, symbology, human-readable info...
- **Installation:** pre-assigned ID-to-asset vs. “licence plate” association in the field.
- **Sustainment:** install SOPs, material specifications, new asset compliance...



# Tagging Strategy

- Design considerations
  - Symbology's (2D: QR/Datamatrix or Code39/128)
  - Sequential numbers vs. specific tag data
- Label Material
  - Last as long as your asset
  - Environment
    - Indoor/Outdoor





# Tagging Strategy



- Surface Type?
  - Metal (painted or exposed steel)
  - Plastic
  - Condition (Rust, oil, dirty)
- Flat, curved?
- Attachment
  - Adhesive, mechanical or wired?



# Tagging Strategy

- Tag standardization – Lowers your costs.
- Tag design by asset class for corporate standard.
  - Assessments - Develop Engineering Drawings by Asset Class

- Marking method
- Surface preparation
- Training manuals
- Photos w/ Label locations
- Attachment methods
- Fixed vs rotating assets

OBJECT TYPE		Exchangers & Condensers			
PLAQUE REQUIRED		Yes			
					
<b>PHOTO</b>					
		<b>TAG TYPE 1</b>	Monroe12	<b>TAG QTY</b>	1 Ea.
		<b>DESCRIPTION</b> 0.032" x 2" x 3" Sunfast Gold MP - Screws/Rivets/Wire - Non-Rotating Location			
		<b>HUMAN READABLE</b> 8-digit Maximo Asset # / P&ID / Description			
<b>BARCODE</b> ECC200 Datamatrix - 8-digit Maximo Asset #					
		<b>TAG TYPE 2</b>	Not Applicable	<b>TAG QTY</b>	Not Applicable
		<b>DESCRIPTION</b> Not Applicable			
		<b>HUMAN READABLE</b> Not Applicable			
<b>BARCODE</b> Not Applicable					
		<b>TAG TYPE 3</b>	Not Applicable	<b>TAG QTY</b>	Not Applicable
		<b>DESCRIPTION</b> Not Applicable			
		<b>HUMAN READABLE</b> Not Applicable			
<b>BARCODE</b> Not Applicable					

# Label Installation

- What is the optimal plan for the most cost efficient installation?
- Plant layout (Grids/P&ID)
- Resource considerations vs. time/cost
  - Outsource labor or use internal



# Packaging

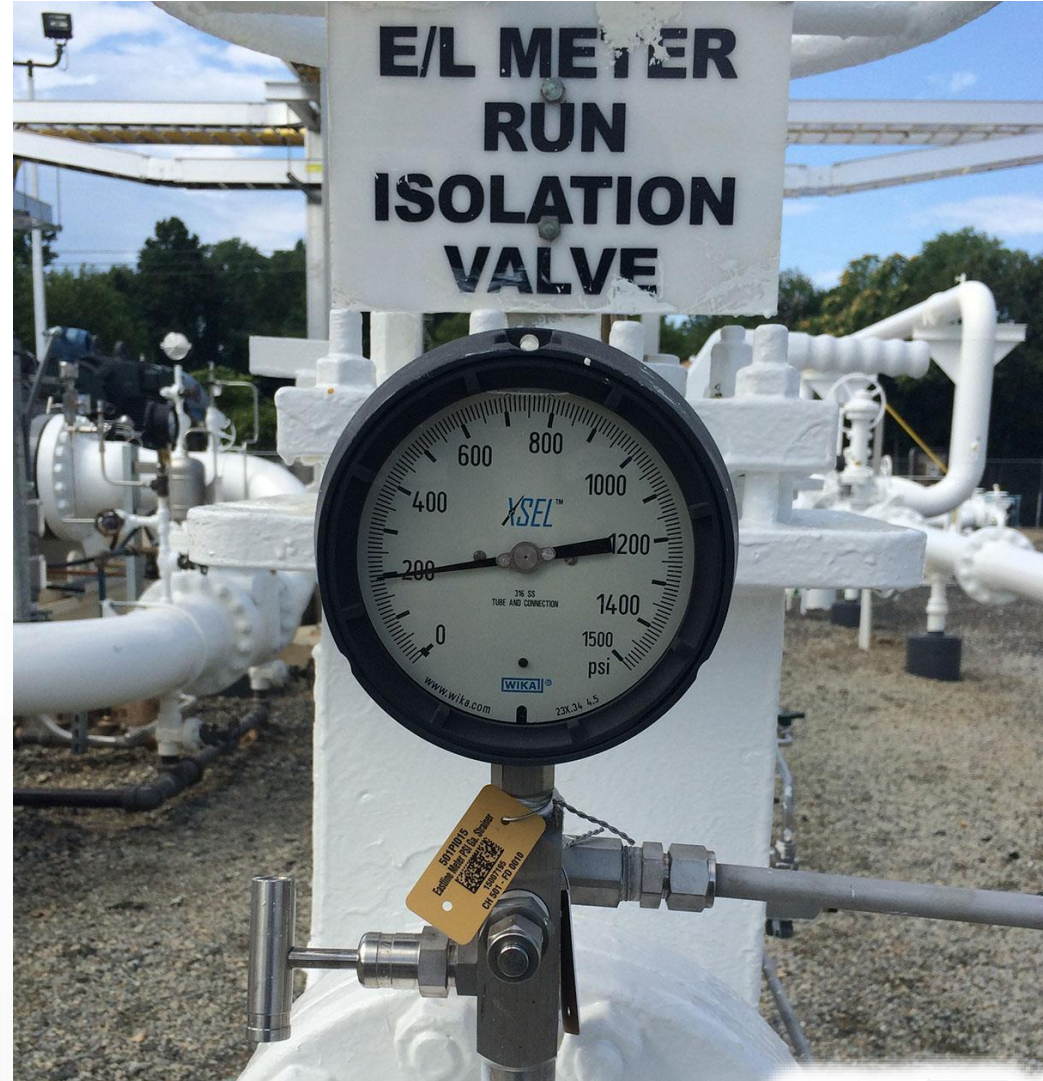
## Faster installation of custom labels

- Use kitting...
- Organize them by P&ID or similar

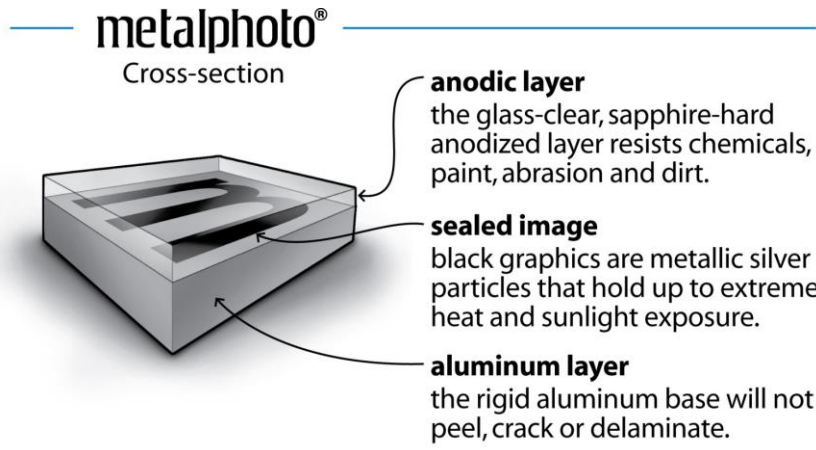


# Camcode Core Markets

- Utility (water, electric, meters, poles)
- Energy (oil, gas, nuclear, renewables)
- Defense/Police/Fire
- Facilities (airports, hospitals, apartments, schools, retail, food service)
- Logistics/Transportation (rail, intermodal, on-road, warehouse)
- Civil Engineering/Public Spaces
- Extreme Environments (high heat, chemical exposure, outer space, etc.)



# Metalphoto<sup>®</sup> Photosensitive Anodized Aluminum



[www.metalphoto.com](http://www.metalphoto.com)

Widest performance range, longest history of usage/specification and largest third-party testing documentation...



Australian Government  
Department of Defence



**BF Goodrich**  
**Honeywell**



Ministry  
of Defence



**CAMCODE<sup>®</sup>**  
Durable Bar Code Solutions

# Unlimited Tag Customization

**CAMCODE SALES PROOF SA POWER A**

SOC NO: QUOTE NO: CQT030000

**POLE TAG**  
0.012" METAL PHOTO  
TWO HOLES  
5508 PSA  
QR CODE (30 MIL)

BARCODE READS  
"https://www.saspowernetworks.com.au/outages/report-a-problem"

Customer: SA POWER NETWORKS  
Sales Rep: SAM WARDNER  
Designed by: STONE  
Date: 07-30-20

**CAMCODE SALES PROOF SA POWER A**

SOC NO: QUOTE NO: CQT030000

**TRANSFORMER TAG**  
0.032" METAL PHOTO  
SUNFAST GOLD DYE  
5508 PSA  
QR CODE (20 MIL)

BARCODE READS  
"https://www.saspowernetworks.com.au/outages/report-a-problem"

Customer: SA POWER NETWORKS  
Sales Rep: SAM WARDNER  
Designed by: STONE  
Date: 07-30-20

**CAMCODE SALES PROOF SOUTHCO1 A**

SOC NO: QUOTE NO: CQT000000

**VALVE TAG**  
32 characters max allowed for a single line.  
Any color may be used.

QR CODE ERROR CORRECTION LEVEL SET TO H (30%)  
"https://genproc.southernco.com/tr.aspx?TOT=P&T=MIL034-HC-VL-1014"

DATAMATRIX READS  
"MLO34-HC-VL-1014"

Customer: SOUTHERN COMPANY  
Part No: 1010  
Designer: S STONE  
Date: 06-03-19

**CAMCODE PROOF SASKPWR1 A**

SOC NO: QUOTE NO: CQT030176

**POLE LABEL**

Barcode reads: "SS010001"

Customer: SASK POWER  
Part No: 1010  
Designed by: C KNABER (RD)  
Date: 1-27-11  
PO: 55957-22911  
Specs: CUSTOMER  
Sequence: S9010001-S9017500  
Laser Image:  Film Only:  Rot:   
Print No: 1

Customer: SASK POWER  
Part No: 1010  
Designed by: C KNABER (RD)  
Date: 1-27-11  
PO: 55957-22911  
Specs: CUSTOMER  
Sequence: S9010001-S9017500  
Laser Image:  Film Only:  Rot:   
Print No: 1

APPROVED BY: DATE:

# Pole Tags ~ East Central Oklahoma Electric

## Problem

- Missing number inventory in warehouse.
- Numbers falling out of brackets.
- Duplicates from manually creating tags with slide in numbers.

## Solution

- Camcode Metalphoto pole tags saved thousands of dollars with one piece design.
- No duplication/150000 tags
- No letter/number inventory to carry.
- Lasts 30+ years.





## Facilities CMMS ~ Walmart

### Problem

- Walmart needed to track over 300 critical assets / store for CMMS/maintenance purposes with a durable tag that will survive the rigors of being exposed to the public.

### Solution

- 1.5 million Camcode Metalphoto labels are now installed in over 4700 Walmart locations.
- Each assets record is accessed by scanning a Camcode QR code with 100% accuracy.



# Kitting ~ Monroe Energy

## Problem

- Maximo customer Monroe Energy used asset specific tags with Maximo generated asset numbers and custom description.
- Installing thousands of custom tags would have incurred thousands of additional dollars due to finding a specific asset for it's custom tag.

## Solution

- Camcode used "Kitting" to organize tags in a binder. We created Excel data files and used a "key" that tied a specific asset to where it was in the binder for easy location of custom tags.



# Meter Badges ~ American Meter

## Problem

- Gas customers wanted a way to capture meter test data and to better manage inventory.

## Solution

- Working with American Meter, Camcode Meter Badges are installed on millions of gas meters.
- Bar coded meters shipped to end users allow end users to scan in and out of inventory.
- Test data for meters are now scanned with 100% accuracy.



# Utility/Energy Users

- Gas meters
- Intermountain Power
- Southern Co.
- DTE Minnesota power
- Exelon
- Alliant Energy
- Orlando Airport/Conv Ctr
- Chevron/Exxon
- Monroe Energy
- StarBucks
- Walmart
- Hydro Quebec
- Manitoba Hydro
- BC Hydro
- Sask Power
- Centurylink
- Flint Hills

# Conclusion

- 100% accurate database
  - No more keystroke mistakes
  - Assets are identified correctly 85% of the time.
- More easily find assets with bar code tag
  - Average time to find the asset information in Max and WO is 9 min.
- More accurate maintenance tracking
  - Start/stop times.
  - Faster reaction times
- Opportunity to clean-up database
  - Re-associate physical assets.
- Tags not lasting, reprints etc
  - 20+ years
  - Using the correct tag on the correct asset

# Questions?

Lou Peeples

[lpeeples@camcode.com](mailto:lpeeples@camcode.com)

313-506-0481

## CMMS Video (3 min.)



**Q&A**

**OVER TO YOU...**



# CONTACT US

*Click or point your camera below...*

Visit our website  
[www.bpdzenith.com](http://www.bpdzenith.com)

 **BPD ZENITH**



**Sarah Brady**



**CAMCODE**<sup>®</sup>  
Durable Bar Code Solutions



**Lou Peeples**



Follow us |   

*Get in touch – we'd love to hear from you!*

# **CAMCODE:** WHY EFFICIENT ASSET & MAINTENANCE MANAGEMENT BEGINS WITH WORLD-CLASS ASSET TAGGING



**BPD ZENITH**

# **THANK YOU FOR JOINING US!**