



**THERESA HARPER**

IN-HOUSE HEALTH & SAFETY ADVISOR FOR SITECONNECT  
Developers of the SiteConnect's feature-rich, quick to deploy, Site Management and Health & Safety solution designed to solve your industry challenges.

**Update on Whakaari/White Island Tragedy: Take it seriously and have a comprehensive plan or pay the price when things go wrong.**

On 30 November 2020, it was announced that Worksafe NZ is prosecuting 13 parties following the investigation of the Whakaari/White Island tragedy.

- Three individuals have been charged as directors or individuals required to have exercised 'due diligence that their company met it's health and safety obligations.'
- Nine parties have been charged for 'failing to ensure workers and others' health and safety.'
- One party has been charged as a 'person controlling a business.'

If proven, the above charges carry maximum fines of \$300,000 for the individuals and \$1,500,000 for the parties.

- There is personal liability involved in health and safety now.
- These things can strike at any time, and you have to be ready and prepared on an on-going basis.

- Having a contract to say it's someone else's responsibility now no longer cuts it, as the Island owners are discovering.

A terrible tragedy that could have been avoided had everyone involved, including the landowners of Whakaari/White Island, played their part in ensuring that visitors and guides to the island were safe.

Read full details of the Worksafe announcement:

- [13 parties charged by WorkSafe New Zealand over Whakaari/White Island tragedy | WorkSafe](#)

As a nation, we need to look at this tragedy and think about the positions we hold within our organisations and what we can do to ensure our people go home safely to their families at the end of each and every working day.

Check out the chart below. Where do you sit within this hierarchy?

- Under the law, everyone on this chart can have some degree of legal responsibility.

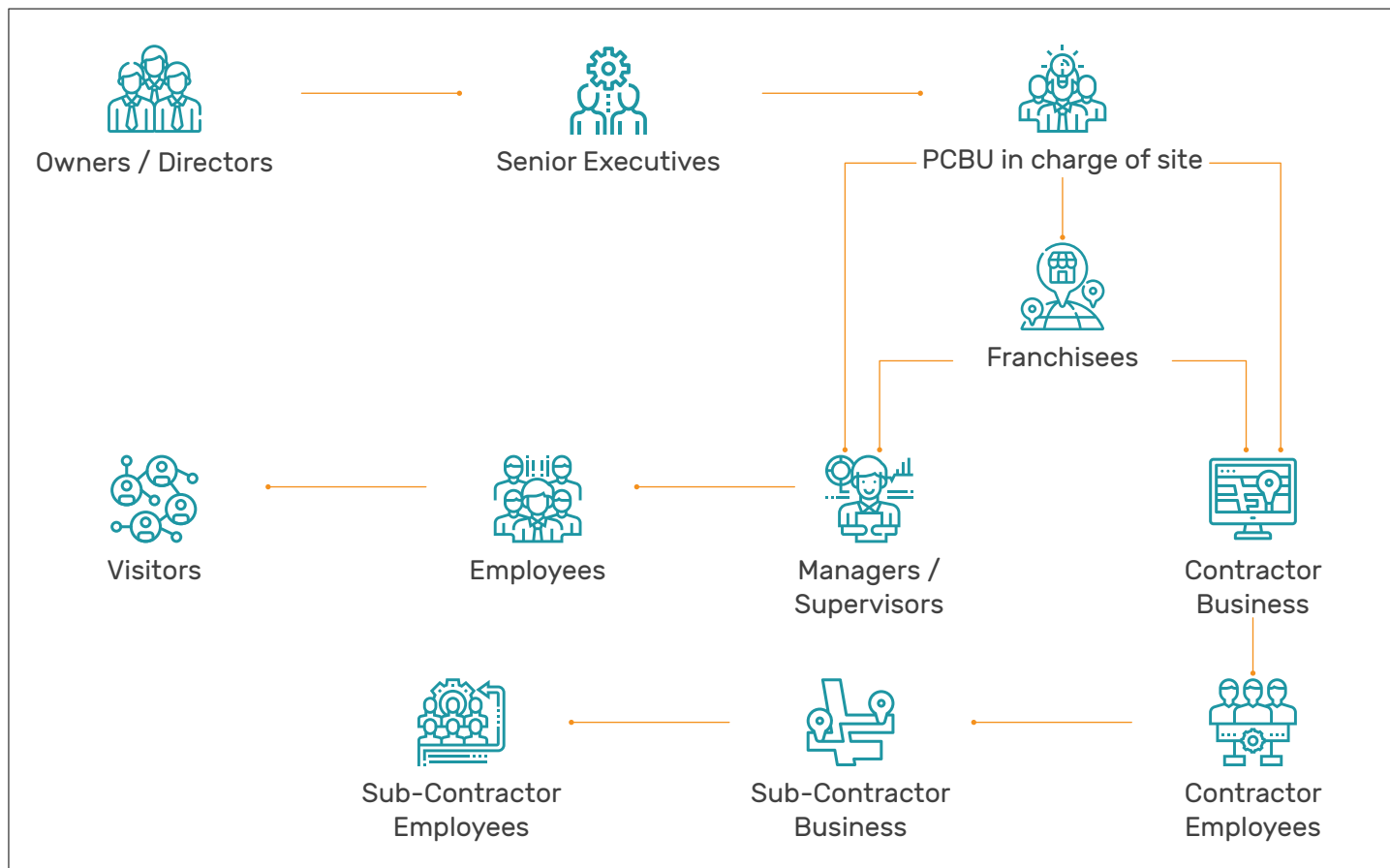
What can you do better within your business to ensure the people you are responsible for each day, including employees, contractors, workers, and visitors, go home safely to their families?

SiteConnect can help you ensure compliance, engagement, and communication with all the personnel you and your organisation may be interacting with and/or responsible for.

**Want to know more?**

Then call us now on Freephone 0800 748 763 or email [support@sitesoft.com](mailto:support@sitesoft.com).

We would love to help you to keep your teams safe!



**SiteSoft**

SiteConnect is a product developed and owned by SiteSoft New Zealand Ltd.



**Contact Us**  
Office 0800 748 763



**Email**  
[support@sitesoft.com](mailto:support@sitesoft.com)



**Visit**  
[www.SiteSoft.com](http://www.SiteSoft.com)

*Proud member of*

Property Council  
New Zealand

