

# DPM-36 & DPM-40

TELESCOPIC ARTICULATING PERSONNEL OR MATERIAL HANDLING AERIAL LIFT

CATEGORIES  
C, D, & E  
NOW AVAILABLE  
TO MEET NEW  
ANSI A92.2  
STANDARDS

# DUR-A-LIFT®

*Working heights up to*  
**45 FEET**  
AND SIDE REACH UP TO 33'6"



**180°  
BASKET  
ROTATION**

**Options available for  
double person baskets  
in the DU and DP series**



- Convenient access to all the compartments right from the basket.
- -35° boom angle allows for access to the basket from ground level.
- Conveniently positioned controls will allow the operator to be more effective when maneuvering their materials.



[sales@dur-a-lift.com](mailto:sales@dur-a-lift.com)  
[www.dur-a-lift.com](http://www.dur-a-lift.com)

Dur-A-Lift Inc., P.O. Box 31, George, Iowa 51237  
(877) 4-DURALIFT (877) 438-7254 | Fax: (712) 475-2809

# DPM-36 & DPM-40

TELESCOPIC ARTICULATING PERSONNEL OR MATERIAL HANDLING AERIAL LIFT

## SPECIFICATIONS

	DPM-36	DPM-40
<b>Height to bottom of platform</b>	<b>36'</b>	<b>40'</b>
<b>Working height</b>	<b>41'</b>	<b>45'</b>
<b>Side reach</b> (MH, DU AND DP MODELS)	<b>27' 6"</b>	<b>31' 6"</b>
<b>Side reach</b> (SP MODEL)	<b>29' 6"</b>	<b>33' 6"</b>
<b>Stowed travel height</b>	<b>10' 6"</b>	<b>10' 6"</b>
<b>Platform capacity</b> (MH AND SP MODELS)	<b>400#</b>	<b>400#</b>
<b>Platform capacity using jib</b> (DU MODEL)	<b>400#</b>	<b>400#</b>
<b>Platform capacity not using jib</b> (DU MODEL)	<b>550#</b>	<b>550#</b>
<b>Platform capacity</b> (DP MODEL)	<b>600#</b>	<b>600#</b>
<b>Approximate weight</b>	<b>3700#</b>	<b>3900#</b>
<b>Articulating arm travel</b> (MH, DU AND DP)	<b>0 to 75</b>	<b>0 to 75</b>
<b>Articulating arm travel</b> (SP MODEL)	<b>0 to 96</b>	<b>0 to 96</b>
<b>Main boom travel</b>	<b>-30 to 75</b>	<b>-30 to 75</b>
<b>Extension Travel</b>	<b>96"</b>	<b>120"</b>

Minimum GVWR will change significantly depending on make of chassis and stabilizer option. Dur-A-Lift Inc. reserves the right to improve models and change specifications without notice or obligation. Dur-A-Lift equipment meets or exceeds all applicable ANSI Standards as of the date of manufacture.

## STANDARD

- Proportional controls
- Lower override controls
- Engine start/stop from basket
- **Basket access from ground**
- Compensated upper boom
- Insulated models available in category C, D and E
- **Hydraulic basket leveling**
- **Continuous rotation**
- Joystick and lockout controls

## OPTIONS

- High electrical resistant controls
- Outriggers
- Basket liner for fiberglass baskets
- Fiberglass main and articulating booms
- Tool circuits
- D.C. backup system
- 180° basket rotator **DU**
- **Aluminum basket**
- **Non-insulated version available** **DPMS**

**4 BASKET STYLES!**

- 1 - MATERIAL HANDLING
- 2 - DUAL PERSON
- 3 - SINGLE PERSON
- 4 - DUAL CONFIGURATION



DP MODEL



MH MODEL

## MH FEATURES

MATERIAL HANDLING

- **Up to 1000# side mounted jib and winch**
- Upper and lower winch control
- 400# basket capacity
- 24" X 30" fiberglass basket
- **180° basket rotator**

## SP FEATURES

SINGLE PERSON

- 400# basket capacity
- 24" X 30" fiberglass basket
- **180° basket rotator**
- 33' 6" side reach

## DP FEATURES

DUAL PERSON

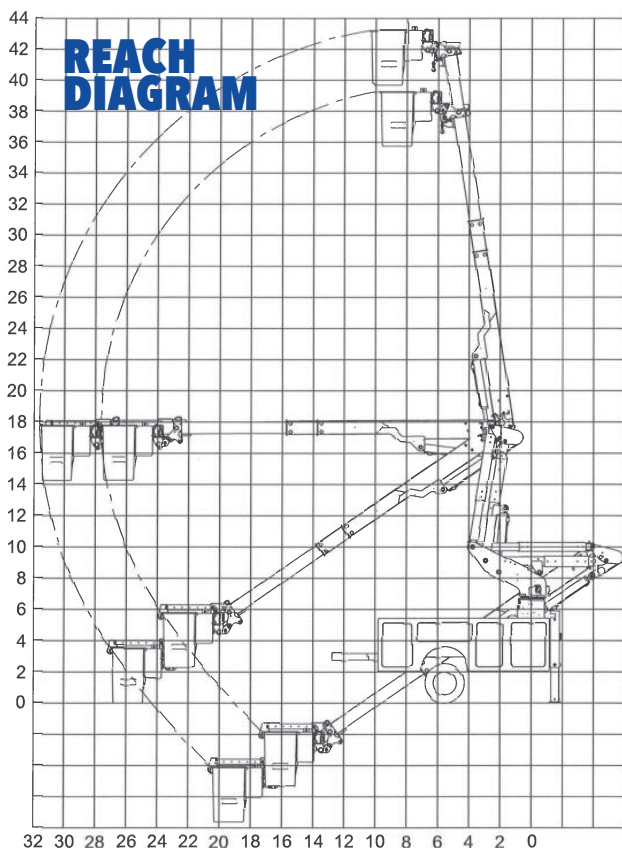
- 600# basket capacity
- 24" X 48" fiberglass basket
- **180° basket rotator**

## DU FEATURES

DUAL CONFIGURATION:  
DUAL PERSON OR MATERIAL HANDLING

- **Up to 1000# side mounted jib and winch**
- 550# basket capacity when not using winch
- 400# basket capacity when using winch
- 24" X 42" fiberglass basket
- 100° basket rotator

This aerial lift is sold and serviced by:



sales@dur-a-lift.com  
www.dur-a-lift.com

Dur-A-Lift Inc., P.O. Box 31, George, Iowa 51237  
(877) 4-DURALIFT (877) 438-7254 | Fax: (712) 475-2809



# DPM-47 & DPM-52

TELESCOPIC ARTICULATING AERIAL LIFT

# DUR-A-LIFT®

CATEGORIES  
C, D, & E  
NOW AVAILABLE  
TO MEET NEW  
ANSI A92.2  
STANDARDS

*Working heights up to*  
**57 FEET**  
AND SIDE REACH UP TO 31'6"



**180°**  
BASKET  
ROTATION

Options available for  
double person baskets  
in the DU and DP series



- Convenient access to all the compartments right from the basket.
- -35° boom angle allows for access to the basket from ground level.
- Conveniently positioned controls will allow the operator to be more effective when maneuvering their materials.



[sales@dur-a-lift.com](mailto:sales@dur-a-lift.com)  
[www.dur-a-lift.com](http://www.dur-a-lift.com)

Dur-A-Lift Inc., P.O. Box 31, George, Iowa 51237  
(877) 4-DURALIFT (877) 438-7254 | Fax: (712) 475-2809

# DPM-47 & DPM-52

## SPECIFICATIONS

	DPM-47	DPM-52
Height to bottom of platform	47'	52'
Working height	52'	57'
Side reach	31'6"	31'6"
Stowed travel height	10'5"	11'8"
Platform capacity (MH MODELS)	400#	400#
Platform capacity using jib (DU MODEL)	400#	400#
Platform capacity not using jib (DU MODEL)	550#	550#
Platform capacity (DP MODELS)	600#	600#
Approximate weight	4300#	4400#
Articulating arm travel	0 to 75	0 to 75
Main boom travel	-30 to 75	-30 to 75
Extension travel	120"	120"

Minimum GVWR will change significantly depending on make of chassis and stabilizer option. Dur-A-Lift Inc. reserves the right to improve models and change specifications without notice or obligation. Dur-A-Lift equipment meets or exceeds all applicable ANSI Standards as of the date of manufacture.



## STANDARD

- Proportional controls
- Lower override controls
- Engine start/stop from basket
- **Basket access from ground**
- Compensated upper boom
- Insulated models available in category C, D and E
- Hydraulic basket leveling
- Continuous rotation
- Joystick and lockout controls

## MH FEATURES

MATERIAL HANDLING

- Up to 1000# jib and winch
- **Upper and lower winch control**
- 400# basket capacity
- 24" X 30" fiberglass basket
- **180° basket rotator**

## DP FEATURES

DUAL PERSON

- 600# basket capacity
- 24" X 48" fiberglass
- **180° basket rotator**

## DU FEATURES

DUAL CONFIGURATION:  
DUAL PERSON OR MATERIAL HANDLING

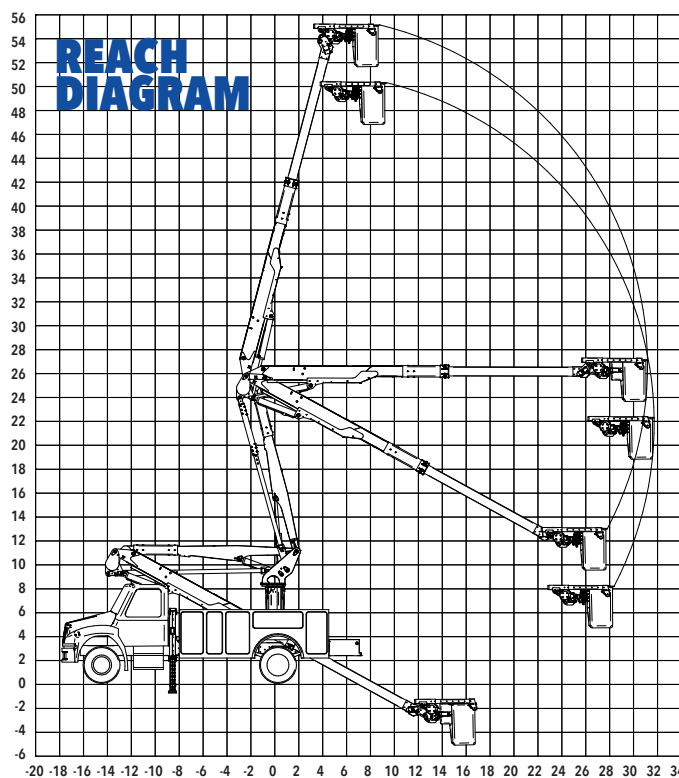
- Up to 1000# jib and winch
- 550# basket capacity when not using winch
- 400# basket capacity when using winch
- 24" X 42" fiberglass basket
- 24" X 42" aluminum basket
- 100° basket rotator



**Double person baskets available in our DU and DP models.**

## OPTIONS

- High electrical resistant controls
- Outriggers
- Basket liner for fiberglass baskets
- Tool circuits
- Fiberglass main and articulating booms
- D.C. backup system
- 180° basket rotator **DU**
- Aluminum basket



This aerial lift is sold and serviced by:



sales@dur-a-lift.com  
www.dur-a-lift.com

Dur-A-Lift Inc., P.O. Box 31, George, Iowa 51237  
(877) 4-DURALIFT (877) 438-7254 | Fax: (712) 475-2809