

DO(S)-32/36

ARTICULATING OVERCENTER AERIAL LIFT

DUR-A-LIFT

AVAILABLE IN
INSULATED OR
NON-INSULATED
FORMATS



Working heights up to
41 FEET
SIDE REACH UP TO 30'4"



sales@dur-a-lift.com
www.dur-a-lift.com

Dur-A-Lift Inc., P.O. Box 31, George, Iowa 51237
(877) 4-DURALIFT (877) 438-7254 | Fax: (712) 475-2809

DO(S)-32/36

ARTICULATING OVERCENTER AERIAL LIFT

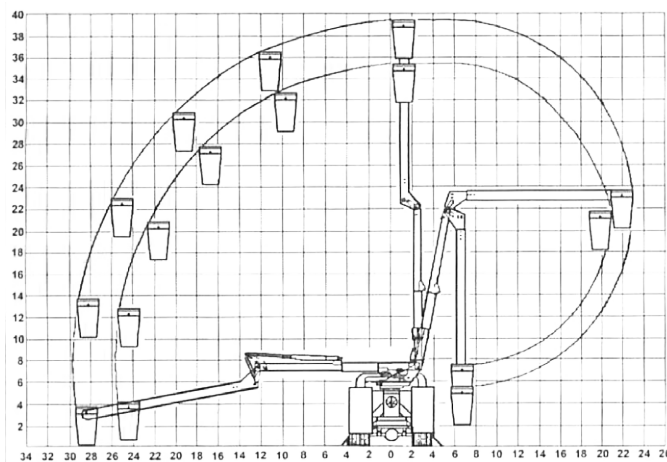
SPECIFICATIONS

	DO(S)-32	DO(S)-36
Height to bottom of platform	32'	36'
Working height	37'	41'
Side reach	26' 4"	30' 4"
Stowed travel height	9' 8"	9' 8"
Platform capacity	350#	350#
Approximate weight	2400#	2500#
Lower boom travel	0 to 100	0 to 100
Upper boom travel	0 to 196	0 to 196
Lower boom insulation gap	12"	12.25"
Upper boom fiberglass length	12' 10"	15' 2"

Minimum GVWR will change significantly depending on make of chassis and stabilizer option. Dur-A-Lift Inc. reserves the right to improve models and change specifications without notice or obligation. Dur-A-Lift equipment meets or exceeds all applicable ANSI Standards as of the date of manufacture.



REACH DIAGRAM



CONTROLS

- Full pressure proportional controls
- Upper control shut-off provided at the turntable
- Three control levers at the turntable and basket
- Deadman at the basket
- Engine start/stop from the basket

HYDRAULIC SYSTEM

- Open center system
- Rated pressure is 2200 PSI
- Operating pressure is 2000 PSI
- 5 to 7 GPM pump flow
- 11 gallon oil reservoir

MECHANICAL SYSTEM

- Basket-leveling by glass rods and chain parallel-ogram system with easy service access
- Rotation by hydraulically driven spur gear with shear-ball rotation bearing
- Basket support

SAFETY FEATURES

- Integral holding valves in each cylinder
- Pressure relief valve
- Non-conductive hoses and fiberglass rods provide leveling and control through the insulated boom section
- Upper-boom constructed of fiberglass and rated for work voltages to 46 kv and below
- Emergency stop system

OPTIONAL FEATURES

- Continuous rotation
- Pedestal mounted outriggers
- Torsion bar
- 12v DC full-function backup system
- Single-hand control lever
- Basket liner
- Basket and control cover
- Hydraulic tool circuit at basket and pedestal
- Basket tilt system
- Automatic or two-speed throttle advance
- Upper-boom electrical test bands
- Lower-boom fiberglass insert
- Lower-boom lifting hook