

# DFSL-32/36

ARTICULATING NON-OVERCENTER AERIAL LIFT

# DUR-A-LIFT®

AVAILABLE IN  
INSULATED OR  
NON-INSULATED  
FORMATS

*Working heights up to*  
**38 FEET**  
SIDE REACH UP TO 19'10"



[sales@dur-a-lift.com](mailto:sales@dur-a-lift.com)  
[www.dur-a-lift.com](http://www.dur-a-lift.com)

Dur-A-Lift Inc., P.O. Box 31, George, Iowa 51237  
(877) 4-DURALIFT (877) 438-7254 | Fax: (712) 475-2809

# DFSL-32/36

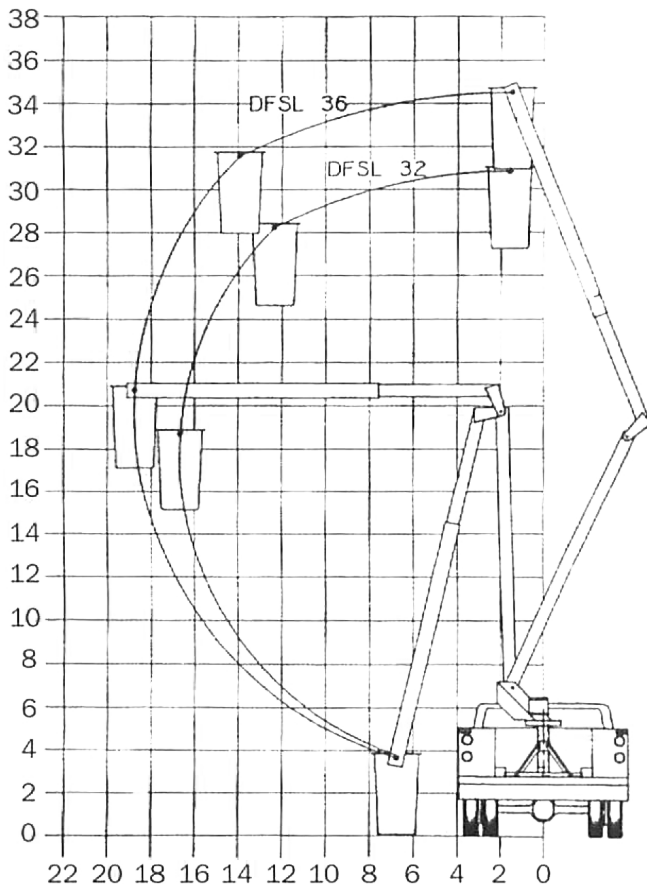
## ARTICULATING NON-OVERCENTER AERIAL LIFT

### SPECIFICATIONS

	DFSL-32	DFSL-36
Height to bottom of platform	29'	33'
Working height	34'	38'
Side reach	17' 10"	19' 10"
Stowed travel height	10'	10'
Platform capacity	300#	300#
Approximate weight	1800#	1850#
Lower boom travel	0 to 92	0 to 92
Upper boom travel	0 to 133	0 to 133
Upper boom fiberglass length	9' 4"	11' 6"

Minimum GVWR will change significantly depending on make of chassis and stabilizer option. Dur-A-Lift Inc. reserves the right to improve models and change specifications without notice or obligation. Dur-A-Lift equipment meets or exceeds all applicable ANSI Standards as of the date of manufacture.

### REACH DIAGRAM



### CONTROLS

- Upper control override at the turntable
- Three control levers at the turntable and basket, with deadman at the basket
- **Engine start/stop from basket**

### HYDRAULIC SYSTEM

- Open center hydraulic system
- Rated pressure is 2000 PSI
- Operating pressure is 1800 PSI

### MECHANICAL SYSTEM

- Basket leveling by fiberglass rods and chain parallelogram system with easy service access
- Rotation by hydraulic driven worm gear
- **370° Rotation**

### SAFETY FEATURES

- Holding valves in each cylinder
- Pressure relief valve
- Non-conductive hoses and fiberglass rods provide leveling and control through the insulated boom section
- 46 KV Category "C" Insulation
- Upper boom tie down
- Safety belt and lanyard

### OPTIONAL FEATURES

- **Continuous Rotation**
- **Outriggers**
- 12v DC Full Function Backup System
- Single Hand Control Lever
- Basket Liner
- Basket and Control Cover
- Hydraulic Tool Circuit at Basket and Pedestal
- Basket Tilt System
- Automatic or Two-Speed Throttle Advance
- Fan Belt or PTO Power
- Insulated version **DSL**

This aerial lift is sold and serviced by:

**FALLSWAY**  
EQUIPMENT COMPANY

1-800-458-7941

INFO@FALLSWAY.COM

WWW.FALLSWAY.COM



sales@dur-a-lift.com  
www.dur-a-lift.com

Dur-A-Lift Inc., P.O. Box 31, George, Iowa 51237  
(877) 4-DURALIFT (877) 438-7254 | Fax: (712) 475-2809