



MAXIMUM PERFORMANCE

4,500 – 6,500 LB. CAPACITY
ELECTRIC CUSHION TIRE LIFT TRUCKS

MORE POWER. BETTER EFFICIENCY.

Built For Your Operation

Delivering high performance and efficiency, the Cat® EC22N2-EC30LN2 electric cushion tire lift truck series is built to perform – providing optimum power, increased energy efficiency and a lower overall operating cost.

ADVANTAGES TO YOU:

- 4,500-6,500 lb. lift capacities
- Two-stage hydraulic system provides precise load handling and fast lift speeds
- Separate drive, hydraulic and steer motors for tailored performance levels and low energy consumption
- Electric power means zero hydrocarbon emissions
- 500-hour extended service intervals
- World-class service and support provided by the best dealer network in the industry

KEY APPLICATIONS:

- Chemical and allied products
- Electronics and electrical equipment
- Fabricated metal
- Food products
- Rubber and plastics
- Textile mill products
- Warehousing



EASY TO SERVICE

The parallel-mounted drive motor provides high torque for greater power and ease of serviceability.



FRONT-TO-BACK VISIBILITY

Narrow mast channels and a low profile counterweight promote good visibility while traveling.





Two-stage hydraulic system

Facilitates precise load handling and fast lift speeds for seamless lift truck operation.

Zero emissions

For a cleaner working environment.

Regenerative braking

This feature helps return energy to the battery, allowing for extended run times and brake life.

Custom performance settings

Tailor the truck's three performance settings to suit your business.

Dynamic Performance

Equipped with powerful 3-phase AC technology, this lift truck features separate drive, hydraulic and steer motors, providing exact performance levels for maximized efficiency. This technology also ensures responsive acceleration and braking for precise positioning, dynamic acceleration and controlled travel speed.

**TOTAL COMFORT.
BETTER
CONTROL.**



Smooth, Quiet Ride

With minimized noise and vibration levels, the EC22N2-EC30LN2 series will help keep operator fatigue at bay for increased productivity. The lift truck's fully-enclosed motors, highly-polished gears and rubber-mounted hydraulic motor all work together for an even and efficient ride.

GREATER OPERATOR EFFICIENCY

- **Fingertip directional control**
Allows the operator to easily shift between forward and reverse without losing contact with the steering wheel.
- **Adjustable tilt steering column with quick release**
Allows your operator to easily adjust the steering column for the most comfortable position, while the quick release provides easy access to the battery.
- **Full hydrostatic power steering**
Minimizes the steering effort regardless of speed, providing better lift truck control and maneuverability.
- **Seat-side hydraulic levers**
Your operator will have total control of all hydraulic functions from an arm-rested position – greatly increasing their comfort and productivity.



EXCEPTIONAL ERGONOMICS

The full-suspension standard vinyl seat can be adjusted to give the operator the most comfortable position possible:

- **Front and back** – slides up to six inches to accommodate operators of various heights
- **Lumbar support** – supports the operator's lower back
- **Suspension** – adds support in the seat based on the weight of the operator

POWERFUL PERFORMANCE. MAXIMUM RELIABILITY.

For Greater Productivity

From awareness to security features, the EC22N2-EC30LN2 series gives your operators the confidence they need to get the job done.

ADDED AWARENESS



Premium Display Panel

The easy-to-read LED/LCD display includes seat belt warning, mast interlock and reduced travel speed indicators. Maintenance reminders help keep your operator informed of routine service needs as they arise.



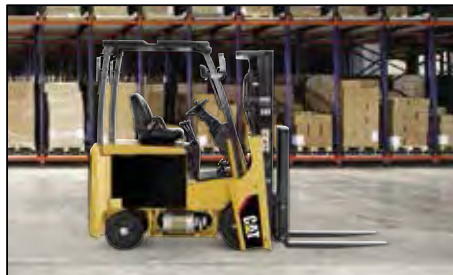
LED Lights

These work lights have a longer life, minimize glare and are cooler than traditional bulbs – all features that help lower your total cost of ownership while improving operator productivity.



Electronic Backup Alarm

This alarm sounds anytime the lift truck is in reverse, alerting pedestrians and other operators working nearby for added security.



Motor Protection System

This system is designed to keep the lift truck running at peak performance. Display-based indicators notify the operators when motor maintenance is required, resulting in greater uptime while helping to reduce the risk of more costly maintenance needs.



ADDED SECURITY

Dedicated to your security from the moment you step on the lift truck to the end of the shift, this series offers these standard features:

- 18-inch elongated grab bar for ease of entry/exit
- Anti-slip step plate for better foot control
- Highly-visible orange seat belt
- Electronic back-up alarm to increase awareness in the work area

PRESENCE DETECTION SYSTEM (PDS)

The Presence Detection System (PDS) activates whenever the operator does not fasten the seat belt during operation or leaves the normal operating position without activating the parking brake. This integral computer-based feedback system uses both audible and visual indicators to alert the operator to potentially hazardous situations, while increasing operator awareness.

Key Features:

- When the operator is not in the normal operating position, the PDS electronically discontinues powered-travel movement and activation of load-handling functions.
- When an operator is in the normal operating position, but the seat belt is not buckled, an audible warning will sound and a visible indicator will appear, alerting the operator.



Local service and support



Genuine OEM parts



Custom financing packages

MORE CONFIDENCE





Factory warranty for added protection



Local Support You Can Count On

A Cat lift truck purchase connects you to a variety of material handling solutions, including world-class service and support from your local, trusted dealer. With trained service technicians, a diverse parts inventory and a broad selection of service options, your local dealer can help you lower costs, enhance productivity and more efficiently manage your business.

FINANCING MADE SIMPLE

Financing your next Cat lift truck is easy with our wide range of flexible leasing and purchasing options. Whether you want to finance or lease, your local Cat lift truck dealer can help customize a package for your business.

WHEN EVERY PART COUNTS

When buying from your local Cat lift truck dealer, you can rest assured that your genuine OEM parts are manufactured to meet original equipment criteria. Additionally, all Cat lift trucks OEM parts come with a six-month, unlimited-hours warranty.

When speed is critical, our Parts Fast Or Parts Free Guarantee* ensures next-business-day delivery of all Cat lift trucks parts, or they're free, including freight. If your part doesn't come in by the next business day, we pay for it.

STANDING BEHIND OUR PRODUCTS

We deliver peace of mind by helping your lift trucks stay on the job. Every new Cat lift truck is covered by a 1-year / 2,000-hours warranty that includes parts and labor, as well as components and systems. With our standard 2-year / 4,000-hours extended powertrain warranty, you'll have the confidence that only comes from owning a Cat lift truck.

* At dealer's location.

† Programs may be subject to change without notice and may vary by region.
Please ask your local Cat lift truck dealer for complete terms and conditions.

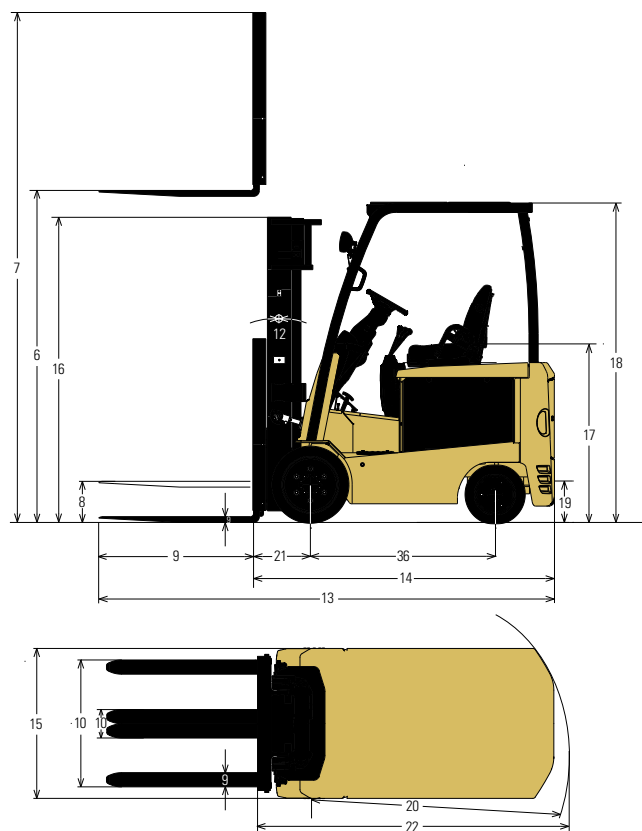
Specifications

Characteristics				EC22N2		EC25N2		EC25EN2	
1	Capacity at rated load center	lb	kg	4,500	2,300	5,000	2,500	5,000	2,500
2	Load center – distance	in	mm	24	500	24	500	24	500
3	Power – diesel, gasoline, LP gas, electric			electric		electric		electric	
4	Tire type – cushion, solid pneumatic			cushion		cushion		cushion	
5	Wheels (x=driven) number front / rear			2x / 2		2x / 2		2x / 2	
Dimensions				EC22N2		EC25N2		EC25EN2	
6	Lift height	in	mm	131	3,340	131	3,340	131	3,340
7	Overall height with mast raised	in	mm	180	4,564	180	4,564	180	4,564
8	Free lift			5.1	130	5.1	130	5.1	130
9	Forks – length x width x thickness	in	mm	42 x 3.9 x 1.6	1,070 x 100 x 40	42 x 3.9 x 1.6	1,070 x 100 x 40	42 x 3.9 x 1.6	1,070 x 100 x 40
10	Fork spacing – out-to-out minimum / maximum	in	mm	9.7 / 35	246 / 893	9.7 / 35	246 / 893	9.7 / 35	246 / 893
11	Fork carriage to DIN 15 173 A / B / no			ITA Class II		ITA Class II		ITA Class II	
12	Tilt – forward / backward	deg		5.0° / 5.0°		5.0° / 5.0°		5.0° / 5.0°	
13	Overall length (with 42” long forks)	in	mm	124.1	3,152	124.1	3,152	128.0	3,252
14	Length to fork face (includes fork thickness)	in	mm	82.0	2,082	82.0	2,082	85.9	2,182
15	Overall width	in	mm	41.5	1,055	41.5	1,055	41.5	1,055
	Overall width with wide stance tires	in	mm	43.5	1,103	43.5	1,103	43.5	1,103
16	Height to top of lowered mast	in	mm	83.5	2,110	83.5	2,110	83.5	2,110
17	Seat height to SIP	in	mm	49.5	1,257	49.5	1,257	49.5	1,257
18	Height to top of overhead guard	in	mm	87.0	2,210	87.0	2,210	87.0	2,210
19	Drawbar pin height	in	mm	11	282	11	282	11	282
20	Minimum outside turning radius	in	mm	73.2	1,860	73.2	1,860	77.3	1,964
21	Load distance, axle to fork face	in	mm	15.5	394	15.5	394	15.5	394
22	Minimum aisle – 90° stack - zero clearance without load	in	mm	88.7	2,254	88.7	2,254	92.8	2,358
Performance				EC22N2		EC25N2		EC25EN2	
23	Travel speed – loaded / empty (36 volt)	mph	km/h	9.6 / 10.8	15.5 / 17.4	9.6 / 10.8	15.5 / 17.4	9.6 / 10.8	15.5 / 17.4
24	Travel speed – loaded / empty (48 volt)	mph	km/h	11.3 / 11.3	18.2 / 18.2	11.3 / 11.3	18.2 / 18.2	11.3 / 11.3	18.2 / 18.2
25	Lift speed – loaded / empty (36 volt)	fpm	m/s	71 / 106	0.36 / 0.54	69 / 106	0.35 / 0.54	69 / 106	0.35 / 0.54
26	Lift speed – loaded / empty (48 volt)	fpm	m/s	94 / 128	0.48 / 0.65	89 / 128	0.45 / 0.65	89 / 128	0.45 / 0.65
27	Lowering speed – loaded / empty	fpm	m/s	98 / 98	0.50 / 0.50	98 / 98	0.50 / 0.50	98 / 98	0.50 / 0.50
28	Gradeability – loaded at 1 mph (1.6 kmh) (36 volt)	%		27		25		25	
29	Gradeability – loaded at 1 mph (1.6 kmh) (48 volt)	%		27		26		26	
30	Maximum gradeability – empty 35 volt / 48 volt	%		24 / 24		23 / 23		24 / 24	
Weight				EC22N2		EC25N2		EC25EN2	
31	Empty – with minimum weight battery	lb	kg	8,805	3,995	9,140	4,145	9,350	4,240
32	Axle load – with rated load (front / rear)	lb	kg	12,260 / 1,620	5,560 / 735	12,930 / 1,720	5,865 / 780	12,950 / 1,905	5,875 / 865
33	Axle load – without rated load (front / rear)	lb	kg	3,650 / 5,160	1,655 / 2,340	3,570 / 5,565	1,620 / 2,525	3,870 / 5,480	1,755 / 2,485
Chassis				EC22N2		EC25N2		EC25EN2	
34	Tire size – front	in		21 x 7 x 15	533 x 178 x 381	21 x 7 x 15	533 x 178 x 381	21 x 7 x 15	533 x 178 x 381
35	Tire size – rear	in		16 x 5 x 10.5	406 x 127 x 267	16 x 6 x 10.5	406 x 152 x 267	16 x 6 x 10.5	406 x 152 x 267
36	Wheelbase	in	mm	50.4	1,280	50.4	1,280	54.3	1,380
37	Track width – front (center of tires)	in	mm	34.5	875	34.5	875	34.5	875
38	Track width – rear (center of tires)	in	mm	35.8	909	34.8	884	34.8	884
39	Ground clearance – at lowest point at mast	in	mm	3	76	3	76	3	76
40	Ground clearance – at center of wheelbase	in	mm	4.9	124	4.9	124	4.9	124
41	Service brakes	type		foot-operated, hydraulic		foot-operated, hydraulic		foot-operated, hydraulic	
42	Parking brakes	type		hand-operated, mechanical		hand-operated, mechanical		hand-operated, mechanical	
Electrical				EC22N2		EC25N2		EC25EN2	
43	Battery type			lead-acid		lead-acid		lead-acid	
44	Battery capacity at 6 hr. discharge rate (36 volt)	Ah	kWh	1,320	48	1,320	48	1,540	55
45	Battery capacity at 6 hr. discharge rate (48 volt)	Ah	kWh	990	48	990	48	1,100	53
46	Battery weight, minimum	lb	kg	2,600	1,180	2,600	1,180	3,100	1,410
47	Battery weight, maximum	lb	kg	3,530	1,600	3,530	1,600	3,970	1,800
48	Battery compartment size, maximum	in	mm	30.5 x 39.5 x 23.3	775 x 1,003 x 592	30.5 x 39.5 x 23.3	775 x 1,003 x 592	34.4 x 39.5 x 23.3	875 x 1,003 x 592
49	Drive motor capacity (60 min. rating) (36 / 48 volt)	HP	kW	16.1 / 22.1	12 / 16.5	16.1 / 22.1	12 / 16.5	16.1 / 22.1	12 / 16.5
50	Lift output (15% rating) (36 / 48 volt)	HP	kW	16.8 / 29.6	12.5 / 17.3	16.8 / 29.6	12.5 / 17.3	16.8 / 29.6	12.5 / 17.3
51	Drive / hydraulic controls	type		AC transistor		AC transistor		AC transistor	
52	Hydraulic pressure for attachments	PSI	Mpa	2,250	15.5	250	15.5	2,250	15.5
53	Hydraulic flow rate for attachments	gpm	lpm	22.45	85	22.45	85	22.45	85

NOTE: These specifications assume the use of drive axles, tires and tilt angles specified. Any modification to specifications, or any other combination of specifications made after the shipment of the truck, requires prior written approval from Mitsubishi Caterpillar Forklift America Inc. (MCFA). (See ANSI/ITSDF B56.1.) Also be advised that overall operating visibility may be affected by the mast configuration and mast options of your truck. Therefore, you may need to add ancillary [auxiliary] devices or modify your operating practices. Consult your dealer for further information.

EC25LN2		EC30N2		EC30LN2	
5,500	2,500	6,000	3,000	6,500	2,950
24	600	24	500	24	600
electric		electric		electric	
cushion		cushion		cushion	
2x / 2		2x / 2		2x / 2	
EC25LN2		EC30N2		EC30LN2	
131	3,340	130	3,315	131	3,345
180	4,564	179	4,536	180	4,566
5.1	130	5.3	135	5.3	135
42 x 3.9 x 1.6	1,070 x 100 x 40	42 x 4.9 x 1.8	1,070 x 125 x 45	42 x 4.9 x 1.8	1,070 x 125 x 45
9.7 / 35	246 / 893	11.2 / 37.8	285 / 960	11.2 / 37.8	285 / 960
ITA Class II		ITA Class III		ITA Class III	
5.0° / 5.0°		5.0° / 5.0°		5.0° / 5.0°	
128.0	3,252	130.2	3,306	130.9	3,325
85.9	2,182	88.8	2,236	88.8	2,255
43.5	1,103	43.5	1,103	43.5	1,103
N/A		N/A		N/A	
83.5	2,110	83.5	2,110	88.0	2,230
49.5	1,257	49.5	1,257	49.5	1,257
87.0	2,210	87.0	2,210	87.0	2,210
11	282	11	282	11	282
77.3	1,964	78.8	2,002	79.5	2,020
15.5	394	16	406	16	406
94.8	2,358	96.5	2,408	95.5	2,426
EC25LN2		EC30N2		EC30LN2	
9.3 / 10.6	15.0 / 17.0	9.1 / 10.6	14.6 / 17.1	9.0 / 10.6	14.5 / 17.1
11.3 / 11.3	18.2 / 18.2	11.3 / 11.3	18.2 / 18.2	11.3 / 11.3	18.2 / 18.2
69 / 106	0.35 / 0.54	57 / 96	0.29 / 0.49	57 / 93	0.29 / 0.47
89 / 128	0.45 / 0.65	75 / 116	0.38 / 0.59	75 / 116	0.38 / 0.59
98 / 98	0.50 / 0.50	98 / 89	0.50 / 0.45	98 / 89	0.50 / 0.45
24		23		20	
25		23		21	
24 / 24		21 / 21		N/A / N/A	
EC25LN2		EC30N2		EC30LN2	
9,680	4,390	10,635	4,825	11,090	5,030
13,285 / 1,905	6,025 / 865	14,915 / 2,335	6,765 / 1,060	15,190 / 2,405	6,890 / 1,090
3,805 / 5,875	1,725 / 2,665	3,955 / 6,680	1,795 / 3,030	3,935 / 7,155	1,785 / 3,245
EC25LN2		EC30N2		EC30LN2	
21 x 8 x 15	533 x 203 x 381	21 x 8 x 15	533 x 203 x 381	21 x 8 x 15	533 x 203 x 381
16 x 6 x 10.5	406 x 152 x 267	16 x 6 x 10.5	406 x 152 x 267	16 x 6 x 10.5	406 x 152 x 267
54.3	1,380	54.3	1,380	54.3	1,380
35.4	900	35.4	900	35.4	900
34.8	884	34.8	884	34.8	884
3	76	3	77	3	77
4.9	124	4.9	124	4.9	124
foot-operated, hydraulic		foot-operated, hydraulic		foot-operated, hydraulic	
hand-operated, mechanical		hand-operated, mechanical		hand-operated, mechanical	
EC25LN2		EC30N2		EC30LN2	
lead-acid		lead-acid		lead-acid	
1,540	55	1,540	55	1,540	55
1,100	53	1,100	53	1,100	53
3,100	1,410	3,100	1,410	3,100	1,410
3,970	1,800	3,970	1,800	3,970	1,800
34.4 x 39.5 x 23.3	875 x 1,003 x 592	34.4 x 39.5 x 23.3	875 x 1,003 x 592	34.4 x 39.5 x 23.3	875 x 1,003 x 592
16.1 / 22.1	12 / 16.5	16.1 / 22.1	12 / 16.5	16.1 / 22.1	12 / 16.5
16.8 / 29.6	12.5 / 17.3	16.8 / 29.6	12.5 / 17.3	16.8 / 29.6	12.5 / 17.3
AC transistor		AC transistor		AC transistor	
2,250	15.5	2,250	15.5	2,250	15.5
22.45	85	22.45	85	22.45	85

Call-out numbers shown in the diagram correspond to the first column of the specifications chart.



Safety Standards

These trucks meet American National Standards Institute/Industrial Truck Standards Development Foundation, ANSI/ITSDF B56.1.

UL-Classified by Underwriters Laboratories, Inc., as to fire and electric shock hazard only. Availability: Type E standard. Types ES and EE optional. Users should be aware of, and adhere to, applicable codes and regulations regarding operator training, use, operation and maintenance of powered industrial trucks, including:

- ANSI/ITSDF B56.1.
- NFPA 505, fire safety standard for powered industrial trucks - type designations, areas of use, maintenance and operation.
- Occupational Safety and Health Administration (OSHA) regulations that may apply.

Contact your Cat lift truck dealer for further information including operator training programs and auxiliary visual and audible warning systems, fire extinguishers, etc., as available for specific user applications and requirements. Specifications, equipment, technical data, photos and illustrations based on information at time of printing and subject to change without notice. Some products may be shown with optional equipment.



Your Cat lift truck dealer can provide additional options and features to specialize your lift truck for your unique application. Operator training and custom financing programs are also available to help find the right fit for your business.

Helping move businesses forward – that's how we're built.

BUILT FOR IT.™

1-800-CAT-LIFT | www.cat-lift.com | m.cat-lift.com

© 2014 MCFA. All Rights Reserved. CAT, CATERPILLAR, BUILT FOR IT, their respective logos, "CaterpillarYellow," the "Power Edge" trade dress as well as corporate and product identity used herein, are trademarks of Caterpillar and may not be used without permission. All registered trademarks are the property of their respective owners. Some products may be shown with optional equipment.

CECM0032

12/14

CAT[®] Lift Trucks