

AB60J

ARTICULATED BOOM LIFT



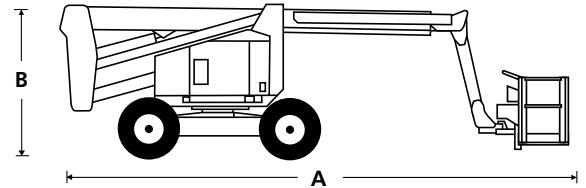
- Tough & reliable diesel articulated boom lift
- Powerful 4 wheel drive for rough terrain
- Robust, rental tough design
- Simple to operate and maintain
- Ideal for both maintenance and construction applications

 **snorkel**
www.snorkellifts.com

ARTICULATED BOOM LIFT

AB60J

| DIMENSIONS | AB60J |
|-----------------------------------|--------------|
| Max. working height | 65 ft 9 in |
| Max. platform height | 59 ft 9 in |
| Max. horizontal reach | 43 ft 1 in |
| Clearance height at max. outreach | 19 ft 6 in |
| Platform size | 8 ft x 3 ft |
| Overall width | 7 ft 11.5 in |
| Overall length (A) | 29 ft 2 in |
| Stowed height (B) | 8 ft 3 in |
| Ground clearance | 12 in |

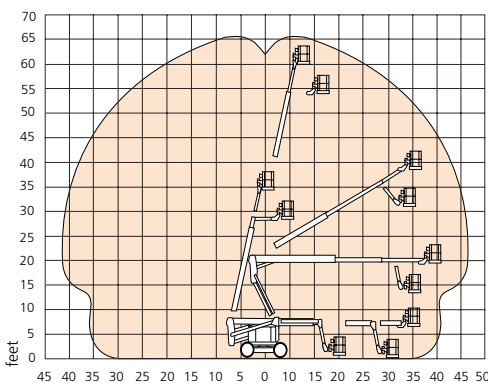


| PERFORMANCE | |
|---------------------------------|--|
| Platform capacity (SWL) | 500 lbs |
| Max. drive height | 60 ft |
| Max. wind speed | 28 mph |
| Max. drive speed (stowed) | 3.2 mph |
| Max. drive speed (elevated) | 0.6 mph |
| Jib length | 6 ft |
| Jib working arc | 75° |
| Platform rotation | 180° |
| Superstructure rotation | 360° continuous |
| Tailswing (riser boom elevated) | 0 in |
| Tailswing (riser boom stowed) | 60 in |
| Raise/lower time | 125/121 sec |
| Gradeability | 20% |
| Inside turning radius | 17 ft 2.5 in |
| Outside turning radius | 20 ft 3 in |
| Tires | 15 in x 19.5 in foam filled |
| Controls | proportional joystick drive, lift & rotation |
| Drive system | 4 wheel drive |

| POWER | |
|--------------|---|
| Power source | Kubota V2403 65hp diesel - Tier 4 Final |

| WEIGHT | |
|--------|------------|
| Weight | 24,800 lbs |

WORKING ENVELOPE



STANDARD FEATURES

- Snorkel Guard™ secondary guarding system
- 6 ft, 75° jib
- Hydraulic platform rotation
- 360° continuous turntable rotation
- Proportional drive, lift & swing
- Dual lanyard attachment points
- Horn
- Rheostat control at ground for boom functions
- Power line to platform
- 5° tilt alarm
- Drive motion alarm
- Flashing amber light
- 2 year parts & labor, 5 year structural warranty
- ANSI compliant

OPTIONS

- Special paint colors
- Airline to platform
- Non-marking tires
- AC generator 110V/240V 2kW
- Aircraft package
- Deluxe aircraft package
- Cold weather package
- Extreme cold weather package
- Extreme environment package
- Light package
- Tow kit
- Glazier package
- Utility package
- Dual fuel
- Environmental hydraulic oil
- Tool tray
- CSA compliant

snorkel www.snorkellifts.com

P.O. Box 1160
 St. Joseph, MO 64502-1160, USA
 Tel: 1 (785) 989-3000
 Toll-free: 1 (800) 255-0317
 Sales Fax: 1 (785) 989-3070
 Parts Fax: 1 (785) 989-3077