

TRUCK-MOUNTED HANDLING SOLUTIONS

Series TMT 2.5 & 2.7 T **K**SERIES

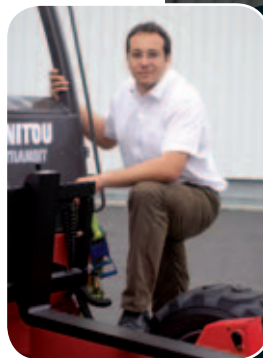


MANITOU, YOUR TRUCK-MOUNTED HANDLING SOLUTIONS!

Time is money! As an industrial partner for several years, we know how important productivity gains are for the future of your company. **This is why MANITOU offers innovative and efficient handling solutions, which make your personnel more competitive.** No matter what your sector of activity (manufacture, transport, supermarket distribution, farm trade, waste processing...) MANITOU provides a wide, multipurpose range of equipment, to meet your requirements absolutely. You are sure to find the MANITOU solution you need!

The MANITOU TMT, a truck-mounted forklift with telescopic boom, 2.5 T and 2.7 T, is a reference solution for truck-mounted handling operations. Highly competitive, it enables you to load/unload easily and faster, both inside and outside, in total safety and full autonomy. As a business, it frees you from having to rely on your suppliers or customers for these operations, so that you can organise faster operational turn-round. In short, TMT means better logistics!

But choosing MANITOU not only means that you can count on high-performance equipment in the long term. **You also benefit from global solutions and efficient services through the MANITOU dealership network:** After Sales Service, servicing and maintenance contracts, extended warranty packages, hire and customised financing... Why offer all this? Because, like you, we don't like wasting time!



"For us, the customers, TMT provides full service delivery"



TRANSPORT COMPANIES, TAKE

// A FULL AUTONOMY OF THE DRIVER FOR DELIVERY AND LOADING

// COMPLETE UNLOADING FROM ONE SIDE ONLY



ADVANTAGE OF ALL THESE BENEFITS!

**/// DELIVERY IN
ALL SITUATIONS AND
HIGH MOBILITY FOR
THE SEMI-INDUSTRIAL
AND ROUGH TERRAIN
VERSIONS**

**//// LESS THAN
1 MINUTE
TO MOUNT AND
DISMOUNT THE TMT**



TMT INNOVATIONS FOR 2011

MANITOU has launched a new series of Truck-Mounted Telescopic (TMT) forklifts with 4 new high-performance models:

- **TMT 25 I** for industrial applications.
- **TMT 25 S and TMT 27 S** for applications needing more capacity and operations on difficult terrain.
- **TMT 27 P** dedicated to poultry farming applications.

These 4 models, in accordance with the new EURO III standards, benefit from many technical improvements to help you improve your productivity.



NEW DRIVE SYSTEM //

The 4 new models (**TMT 25 I, TMT 25 S, TMT 27 S, TMT 27 P**) are equipped with a KUBOTA engine with widely recognised performance levels:

- 4 in-line cylinders / 2.4 litre diesel
- Capacity 50 HP – 36.5 kW/2700 rpm
- Reduced pollution levels
- Better cooling
- Servicing every 500h instead of 250h to save on maintenance costs.

STRONGER //

The single-block, machine-welded frame and flexible connections adapted to truck-mounted forklifts, guarantee intensive use of your TMT.





GREATER COMFORT //

360° visibility is optimal with the cab raised to 2.40 m (overall height). The low-frame version at 2.20 m is also available. The digital instrument panel and new rear lighting also improve working comfort.



GREATER SAFETY //

Extended wheel base for superb stability. The differential locking system improves traction on difficult terrain. Braking efficiency is guaranteed with the 3 wheel braking provided as standard. The rear lighting is improved by bigger and brighter road lights.

GREATER CAPACITY //

The high tensile steel chassis and high torque motors give excellent traction and gradeability. The new stabiliser design increases high-offset capacity by 30%.



TMT 27 P

COMPACT AND ERGONOMIC //

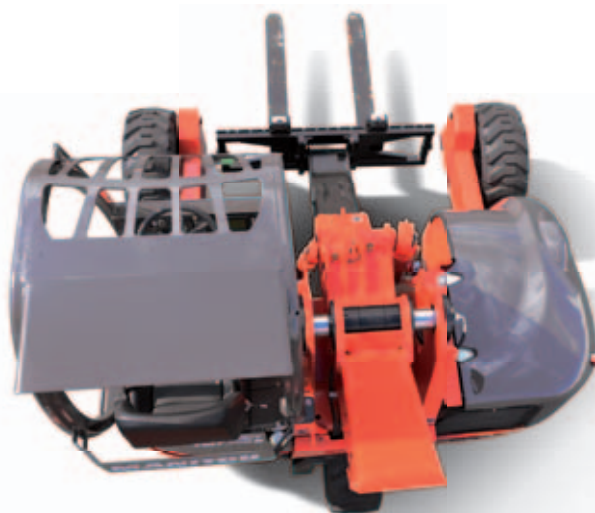
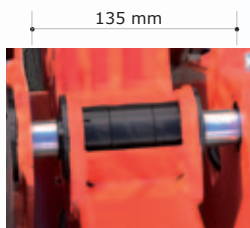
To meet the specific needs of the poultry market and applications requiring reduced working height, Manitou has decided to complete its range with the TMT 27 P model:

- Protective roof height: 2.20 m (option 1.90 m and 2.00 m)
- Load back rest: 362/940 mm
- Forks: 2000 mm
- Self-cleaning pre-filter
- Tyres: 280 x 60 – 15.5
- « poultry specification » lighting



BUILT-IN SIDESHIFT //

The telescopic boom moves laterally by 135 cm. This is a great advantage for all handling operations without loss of capacity and for precise placement.



COMFORTABLE AND EASY TO USE

Inventor of the telescopic boom on a truck-mounted forklift, MANITOU offers a top specification telescopic boom for working comfort and optimal efficiency, with minimal maintenance. All TMT models have high specification features, making it easier to use the forklift while reducing fatigue and risks.



CAB SPACE // The TMT has a spacious drivers compartment with a comfortable seat and ergonomic controls. The telescopic boom provides the best frontal visibility on the market, particularly in loading/unloading mode.





LOAD HANDLING FROM ONE SIDE ONLY //

With the telescopic boom, the TMT can unload from one side only with no extra equipment needed. It saves considerable time. The TMT series has a maximum load capacity of 2500 kg and 2700 kg.



DIGITAL INSTRUMENT PANEL //

New design with sealed instrument panel, ensuring better component protection.



FNR JOYSTICK //

The triple function FNR (Forward Neutral Reverse) joystick makes it easy to use the TMT. The FNR joystick controls boom movements (up/down and retraction/extension of the telescope) and the direction of travel (Forwards/Reverse). Both hands are permanently in contact, for greater safety, comfort and speed.

The TMT has all the advantages for working on difficult terrain:

- 50 hp Kubota Engine
- 3 drive wheels
- Differential lock
- Available tyres 10x16.5 or 31x15.5

The hydraulic motors, 2x400 cc at the front and 1x565 cc at the back, give it a high level of traction in the standard configuration.



SAFETY AND AGILITY ON ALL TYPES OF TERRAIN

As a rough-terrain handling reference, MANITOU truck-mounted forklifts are capable of working fast and efficiently in most conditions. Safety is essential. MANITOU emphasises the importance of component choice and quality, as well as reliability in equipment design.



EURO 3 ENGINE //

In accordance with new standards, the Kubota engine V2403 Interim Tier 4 Stage III A is equipped with an improved cooling system and reduces pollution emissions.



A FORKLIFT WHICH GOES EVERYWHERE //

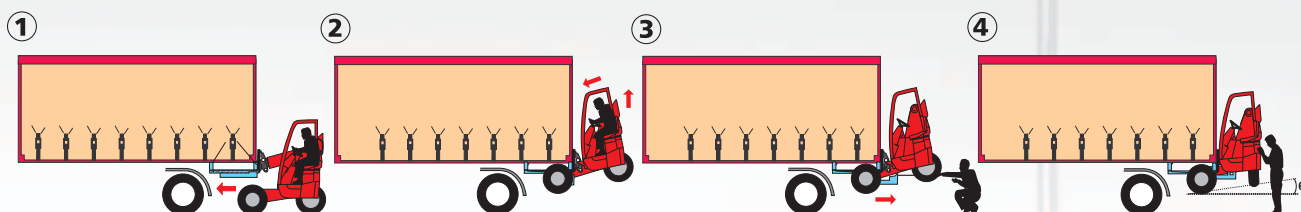
With its overall height of 2.20 m and the compact dimensions of the telescopic boom, the TMT 27 P can access buildings with low headroom.

SAFETY SYSTEM //

The TMT has specific design features incorporating safe operation:

- New stabilisers so that it can handle heavy loads
- Cab with standardized ROPS-FOPS protector
- Longitudinal stability indicator (auditory and visual overload indicator) and management of aggravating movements
- Driver presence detector to prevent unforeseen accidents
- Extended wheel base
- Starter with drive selector in neutral
- Braking efficiency is guaranteed with the 3 wheel braking provided as standard

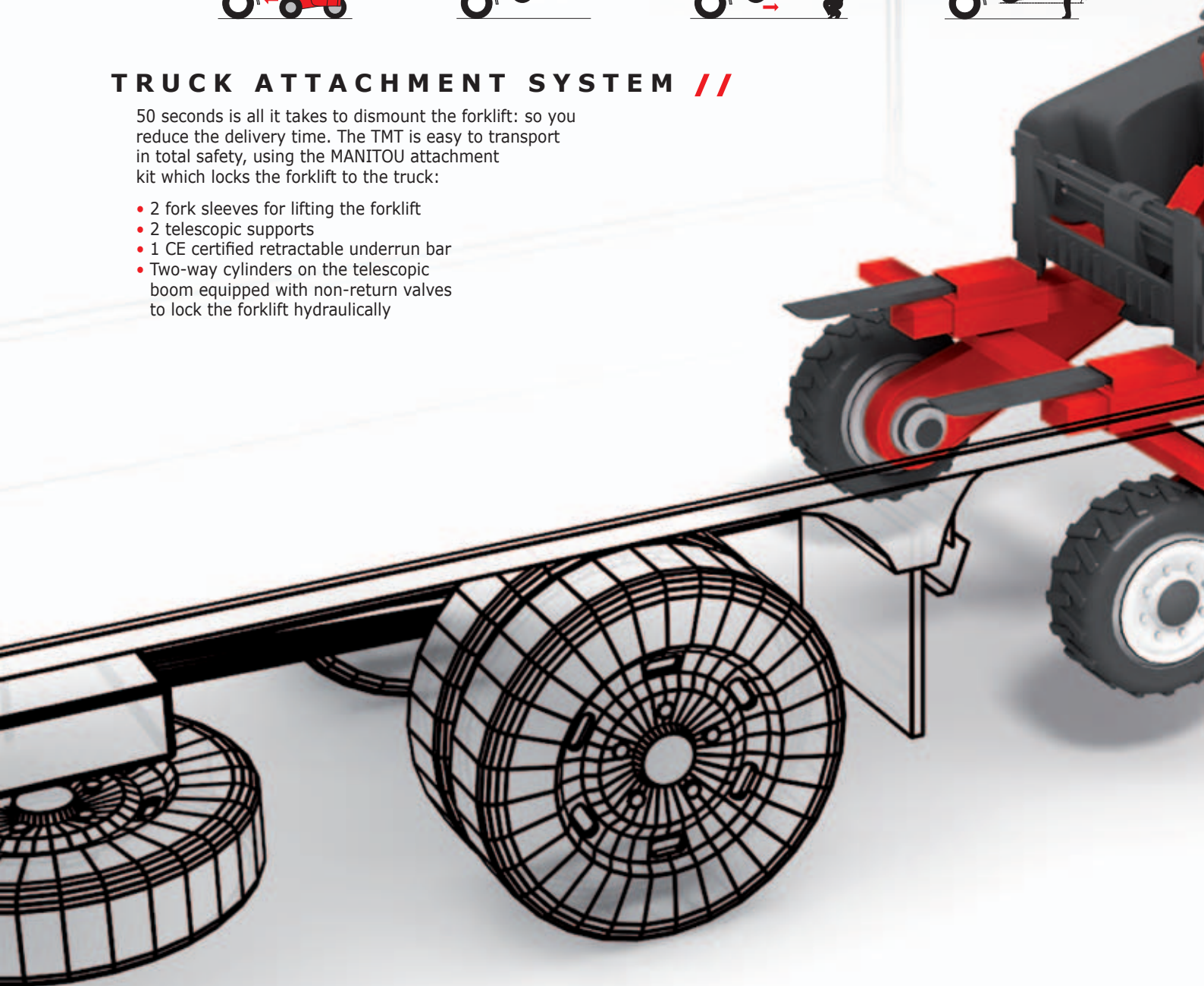




TRUCK ATTACHMENT SYSTEM //

50 seconds is all it takes to dismount the forklift: so you reduce the delivery time. The TMT is easy to transport in total safety, using the MANITOU attachment kit which locks the forklift to the truck:

- 2 fork sleeves for lifting the forklift
- 2 telescopic supports
- 1 CE certified retractable underrun bar
- Two-way cylinders on the telescopic boom equipped with non-return valves to lock the forklift hydraulically



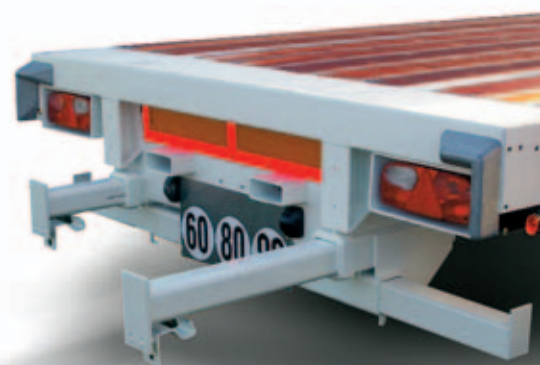


FORKLIFT PROTECTION //



To protect the TMT in the transport position (weather, truck vibrations...), MANITOU forklifts are designed to be robust:

- Single block, machine-welded, closed frame
- Hydraulic components and flexible connections protected
- Flexible connections and cylinders protected within the frame
- Boom fully retracted
- Anticorrosion primer coat applied by cataphoresis



PROTECTION AND TRANSPORT UNDER ANY CONDITIONS

MANITOU emphasises the importance of long life for your equipment. The TMT series is designed to withstand intensive transport and extreme use.



TMT 25 I

TRUCK-MOUNTED, TELESCOPIC, INDUSTRIAL FORKLIFT



CAPACITY

Max. capacity	2500 kg
---------------	---------

LIFTING

Max lifting height	3390 mm
Max forward reach	1500 mm
Lateral movement	135 mm

ENGINE / TRANSMISSION

Type	KUBOTA 4 cylinder Diesel (50 HP)
Hydrostatic transmission	
Drive wheels	3

TYRES

Front tyres	18 X 7.8 16PR
Rear tyres	10 X 16.5 10PR

DIMENSIONS AND WEIGHT

Width	2332 mm
Height	2400 mm
Overhang (in transport position)	1440 mm
Ground clearance	236 mm
Forks	1200 mm
Unloaded weight	2300 kg



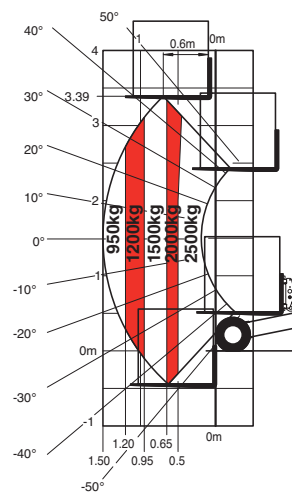
MAXIMUM CAPACITY 2500 KG
UNLOADING ON ONE SIDE
OF THE TRUCK ONLY
IDEAL FOR INDUSTRIAL
APPLICATIONS

AS STANDARD

ROPS/FOPS cab + overload indicator
 FNR lever 3 functions (lifting, telescoping, direction of travel)
 Digital instrument panel
 Differential lock
 Anticorrosion treatment by cataphoresis
 Transfer for truck lighting + 24V cables

OPTIONS

Complete attachment kit + load distribution study
 Rear-view mirrors
 Flashing light
 Road lights
 Reverse and working lights
 Load back rest
 Forks: length 1100 mm and 1400 mm
 Self-cleaning pre-filter



IN ACCORDANCE WITH EN 1450 appendix B.



N°285160

TMT 25 S

TRUCK-MOUNTED, TELESCOPIC, ROUGH-TERRAIN FORKLIFT

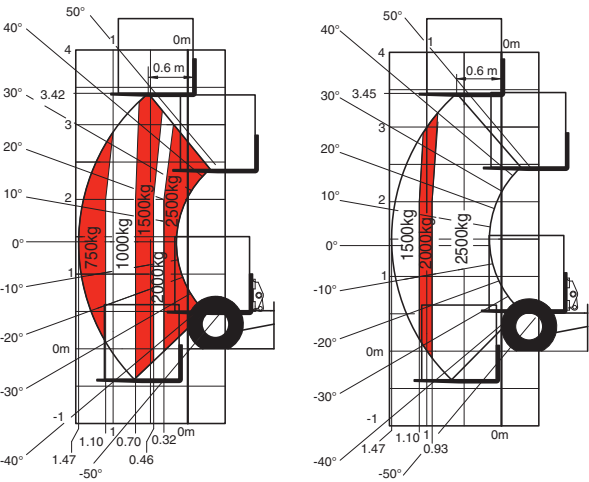


AS STANDARD

- ROPS/FOPS cab + overload indicator
- FNR lever 3 functions (lifting, telescoping, direction of travel)
- Digital instrument panel
- Stabilisers
- Differential lock
- Anticorrosion treatment by cataphoresis
- Transfer for truck lighting + 24V cables

OPTIONS

- Complete attachment kit + load distribution study
- Rear-view mirrors
- Flashing light
- Road lights
- Reverse and working lights
- Load back rest
- Forks: length 1100 mm, 1400 mm and 2000 mm
- Self-cleaning pre-filter



IN ACCORDANCE WITH EN 1450 appendix B.



N°281766

IN ACCORDANCE WITH EN 1450 appendix B.



N°281791

CAPACITY

Max. capacity	2500 kg
---------------	---------

LIFTING

Max lifting height	3450 mm
Max forward reach	1470 mm
Lateral movement	135 mm

ENGINE / TRANSMISSION

Type	KUBOTA 4 cylinder Diesel (50 HP)
Hydrostatic transmission	
Drive wheels	3

TYRES

Front tyres	10 X 16.5 10PR
Rear tyres	10 X 16.5 10PR

DIMENSIONS AND WEIGHT

Width	2348 mm
Height	2400 mm
Overhang (in transport position)	1440 mm
Ground clearance	247 mm
Forks	1200 mm
Unloaded weight	2430 kg



MAXIMUM CAPACITY 2500 kg
TOTAL AUTONOMY FOR A COMPLETE SERVICE
EASY TO USE ON DIFFICULT TERRAIN

TMT 27 S

TRUCK-MOUNTED, TELESCOPIC, ROUGH-TERRAIN FORKLIFT



CAPACITY

Max. capacity	2700 kg
---------------	---------

LIFTING

Max lifting height	3430 mm
Max forward reach	1250 mm
Lateral movement	135 mm

ENGINE / TRANSMISSION

Type	KUBOTA 4 cylinder Diesel (50 HP)
Hydrostatic transmission	
Drive wheels	3

TYRES

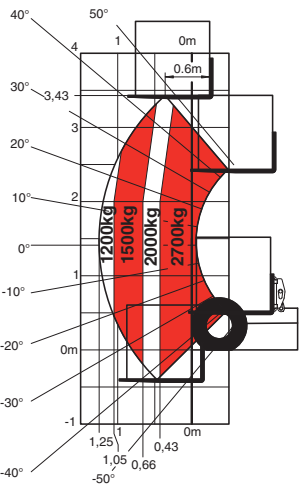
Front tyres	10 X 16.5 10PR
Rear tyres	10 X 16.5 10PR

DIMENSIONS AND WEIGHT

Width	2348 mm
Height	2400 mm
Overhang (in transport position)	1440 mm
Ground clearance	247 mm
Forks	1200 mm
Unloaded weight	2465 kg



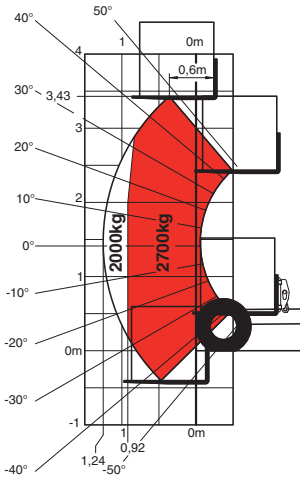
MAXIMUM CAPACITY 2700 KG
PRODUCTIVITY GUARANTEED BY
OPTIMAL LOAD CAPACITY
IDEAL FOR INTENSIVE
APPLICATIONS



IN ACCORDANCE WITH EN 1450 appendix B.



N°283306



IN ACCORDANCE WITH EN 1450 appendix B.



N°283307

AS STANDARD

- ROPS/FOPS cab + overload indicator
- FNR lever 3 functions (lifting, telescoping, direction of travel)
- Digital instrument panel
- Stabilisers
- Differential lock
- Anticorrosion treatment by cathoporesis
- Transfer for truck lighting + 24V cables

OPTIONS

- Complete attachment kit + load distribution study
- Rear-view mirrors
- Flashing light
- Road lights
- Reverse and working lights (blue or red lights)
- Load back rest
- Forks: length 2000 mm
- Self-cleaning pre-filter

TMT 27 P

TRUCK-MOUNTED, TELESCOPIC, ROUGH-TERRAIN FORKLIFT



CAPACITY

Max. capacity	2700 kg
---------------	---------

LIFTING

Max lifting height	3400 mm
Max forward reach	1210 mm
Lateral movement	135 mm

ENGINE / TRANSMISSION

Type	KUBOTA 4 cylinder Diesel (50 HP)
Hydrostatic transmission	
Drive wheels	3

TYRES

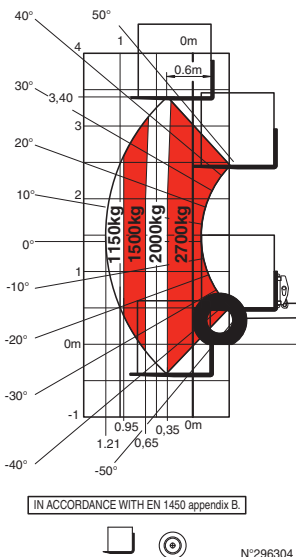
Front tyres	280 X 60 - 15.5
Rear tyres	280 X 60 - 15.5

DIMENSIONS AND WEIGHT

Width	2348 mm
Height	2200 mm
Optional heights	1900 / 2000 mm
Overhang (in transport position)	1440 mm
Ground clearance	262 mm
Forks	2 000 mm
Unloaded weight	2395 kg



MAXIMUM CAPACITY 2700 KG
OPTIMISED COMPACTNESS AND
ERGONOMICS
IDEAL FOR HANDLING
POULTRY CAGES



AS STANDARD

- ROPS/FOPS cab + overload indicator
- FNR lever 3 functions (lifting, telescoping, direction of travel)
- Boom with built-in lateral movement
- Digital instrument panel
- Differential lock
- Load back rest 362 mm/940 mm
- Special poultry lights (white and blue lights)
- Self-cleaning pre-filter
- Anticorrosion treatment by cataphoresis
- Transfer for truck lighting + 24V cables

OPTIONS

- Complete attachment kit + load distribution study
- Rear-view mirrors
- Flashing light
- Road lights
- Load back rest 1270 mm / 476 mm
- Forks: length 1200 mm

Your nearest **MANITOU** dealer:



Head office:

B.P. 249 - 430 rue de l'Aubinière - 44158 Ancenis Cedex - France

Tel: 00 33 (0)2 40 09 10 11 - Fax: 00 33 (0)2 40 09 10 97

www.manitou.com



This brochure describes versions and configuration options for Manitou products which may be fitted with different equipment. The equipment described in this brochure may be standard, optional or not available depending on version. Manitou reserves the right to change the specifications shown and described at any time and without prior warning. The manufacturer is not liable for the specifications given. For more information, contact your Manitou dealer. Non-contractual document. Product descriptions may differ from actual products. List of specifications is not comprehensive. The logos and visual identity of the company are the property of Manitou and may not be used without authorisation. All rights reserved. The photos and diagrams contained in this brochure are provided for information only.

MANITOU BF SA - Limited company with board of directors - Share capital: 37,567,540 euros - 857 802 508 RCS Nantes