

Series 2

# DPM2-32

FEATURING A 22" BASKET ELEVATOR AND TOP MOUNTED JIB AND WINCH

# DUR-A-LIFT®

CATEGORIES C, D, & E NOW AVAILABLE TO MEET NEW ANSI A92.2 STANDARDS



Working heights up to **39 FEET**  
SIDE REACH OF 25' 4"

MATERIAL HANDLING  
TELESCOPIC AERIAL LIFT



## 22" BASKET ELEVATOR

The hydraulically activated basket elevator allows the operator to raise the basket 22" without repositioning the booms or the jib.

**180°**  
BASKET  
ROTATION

Options available for double person baskets in the DU and DP series



## WORK FROM BOTH SIDES

The new top mounted jib and winch allows the operator to rotate the jib to work on either side of the rotating basket.

[sales@dur-a-lift.com](mailto:sales@dur-a-lift.com)  
[www.dur-a-lift.com](http://www.dur-a-lift.com)

Dur-A-Lift Inc., P.O. Box 31, George, Iowa 51237  
(877) 4-DURALIFT (877) 438-7254 | Fax: (712) 475-2809

# DPM2-32

TELESCOPIC PERSONNEL OR MATERIAL HANDLING AERIAL LIFT

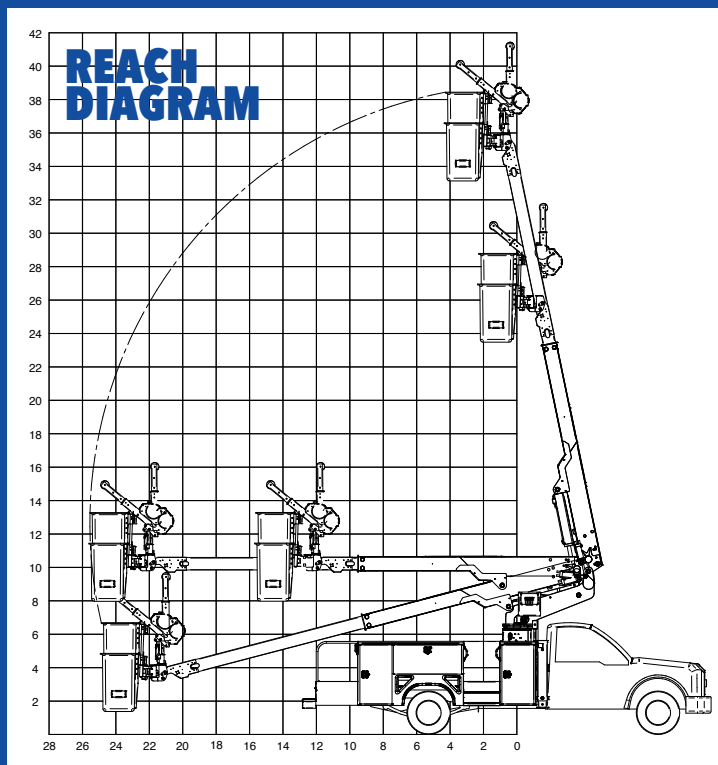
## SPECIFICATIONS

DPM2-32

|  |           |
|--|-----------|
| Height to bottom of platform*              | 34'       |
| Working height*                            | 39'       |
| Side reach                                 | 25' 4"    |
| Stowed travel height                       | 10' 8"    |
| Platform capacity (MH MODELS)              | 400#      |
| Platform capacity using jib (DU MODEL)     | 400#      |
| Platform capacity not using jib (DU MODEL) | 500#      |
| Platform capacity (DP MODELS)              | 600#      |
| Approximate weight (DU AND MH MODELS)      | 3300#     |
| Approximate weight (DP MODEL)              | 3100#     |
| Main boom travel                           | -15 to 80 |
| Extension travel                           | 120"      |

Minimum GVWR will change significantly depending on make of chassis and stabilizer option. Dur-A-Lift Inc. reserves the right to improve models and change specifications without notice or obligation. Dur-A-Lift equipment meets or exceeds all applicable ANSI Standards as of the date of manufacture.

\*Maximum height achievable with addition of the optional 22" basket elevator.



This aerial lift is sold and serviced by:

## STANDARD

- Proportional controls
- Lower override controls
- Engine start/stop from basket
- Basket access from ground
- Insulated models available in category C, D and E
- Hydraulic basket leveling
- Rotating basket
- Continuous rotation
- Joystick and lockout controls
- 180° basket rotator



GROUND ACCESS FROM BASKET

## MH FEATURES MATERIAL HANDLING

- Up to 1000# top mounted jib and winch
- Lower winch control
- 400# basket capacity
- 24" X 30" fiberglass basket

## DP FEATURES DUAL PERSON

- 600# basket capacity
- 24" X 42" fiberglass

## DU FEATURES DUAL CONFIGURATION: DUAL PERSON OR MATERIAL HANDLING

- Up to 1000# top mounted jib and winch
- 550# basket capacity when not using winch
- 400# basket capacity when using winch
- 24" X 42" fiberglass

## OPTIONS

- 22" basket elevator
- High electrical resistant controls
- Outriggers
- Basket liner for fiberglass baskets
- Fiberglass main boom insert
- Tool circuits
- D.C. backup system
- Aluminum basket
- Non-insulated version available **DPM2S**



DP MODEL



MH MODEL

# DPM-32 & DPMS-32

TELESCOPIC PERSONNEL OR MATERIAL HANDLING AERIAL LIFT

# DUR-A-LIFT®

CATEGORIES  
C, D, & E  
NOW AVAILABLE  
TO MEET NEW  
ANSI A92.2  
STANDARDS

Working heights up to  
**37 FEET**  
AND SIDE REACH UP TO 25'4"



## JIB AND WINCH

The DPM-32 is available with or without material handling capabilities. Lift up to 1000 pounds with the side mounted jib and winch



**180°**  
BASKET  
ROTATION

Options available for  
double person baskets  
in the DU and DP series

**AVAILABLE IN  
INSULATED OR  
NON-INSULATED  
FORMATS**



[sales@dur-a-lift.com](mailto:sales@dur-a-lift.com)  
[www.dur-a-lift.com](http://www.dur-a-lift.com)

Dur-A-Lift Inc., P.O. Box 31, George, Iowa 51237  
(877) 4-DURALIFT (877) 438-7254 | Fax: (712) 475-2809



# DPM-32 & DPMS-32

(INSULATED) (NON-INSULATED)

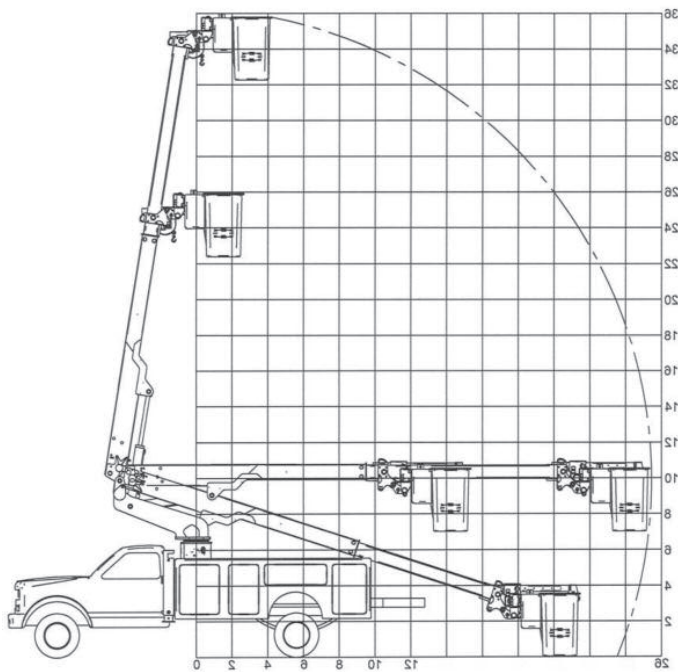
## SPECIFICATIONS

DPM2-32

|  |           |
|--|-----------|
| Height to bottom of platform               | 32'       |
| Working height                             | 37'       |
| Side reach                                 | 25' 4"    |
| Stowed travel height                       | 10' 8"    |
| Platform capacity (MH MODELS)              | 400#      |
| Platform capacity using jib (DU MODEL)     | 400#      |
| Platform capacity not using jib (DU MODEL) | 550#      |
| Platform capacity (DP MODELS)              | 600#      |
| Approximate weight (DU AND MH MODELS)      | 3300#     |
| Approximate weight (DP MODEL)              | 3100#     |
| Main boom travel                           | -15 to 80 |
| Extension travel                           | 120"      |

Minimum GVWR will change significantly depending on make of chassis and stabilizer option. Dur-A-Lift Inc. reserves the right to improve models and change specifications without notice or obligation. Dur-A-Lift equipment meets or exceeds all applicable ANSI Standards as of the date of manufacture.

## REACH DIAGRAM



This aerial lift is sold and serviced by:

## STANDARD

- Proportional controls
- Lower override controls
- Engine start/stop from basket
- **Basket access from ground**
- Insulated models available in category C, D and E
- **Hydraulic basket leveling**
- Rotating basket
- **Continuous rotation**
- Joystick and lockout controls
- **180° basket rotator**

## MH FEATURES MATERIAL HANDLING

- **Up to 1000# side mounted jib and winch**
- Lower winch control
- 400# basket capacity
- 24" X 30" fiberglass basket

## DP FEATURES DUAL PERSON

- 600# basket capacity
- 24" X 42" fiberglass basket

## DU FEATURES

DUAL CONFIGURATION: DUAL PERSON OR MATERIAL HANDLING

- **Up to 1000# side mounted jib and winch**
- 550# basket capacity when not using winch
- 400# basket capacity when using winch
- 24" X 42" fiberglass basket

## OPTIONS

- High electrical resistant controls
- Outriggers
- Basket liner for fiberglass baskets
- Fiberglass main boom insert
- Tool circuits
- D.C. backup system
- **Aluminum basket**
- **Non-insulated version available** DPMS



MH MODEL



DP MODEL



sales@dur-a-lift.com  
www.dur-a-lift.com

Dur-A-Lift Inc., P.O. Box 31, George, Iowa 51237  
(877) 4-DURALIFT (877) 438-7254 | Fax: (712) 475-2809