

THE JERR-DAN[®] CABOVER XLP

Superb maneuverability • Greater visibility • Lower deck height

The Jerr-Dan[®] Low Profile XLP Carrier has been engineered for the increasingly popular Isuzu NRR[™] and Hino 195[™] Cabover Engine (COE) chassis, combining a lower deck height and better load angle with improved visibility and maneuverability. More versatility and choice make for a better tow every time.



JERR-DAN[®]

jerrdan.com | 800.926.9666

JERR-DAN® CABOVER XLP

SPEC SHEET

FEATURES

- Load angles as low as 7.5 degrees
- World's lowest maintenance carrier including No-Lube™ technology for slide pads and pivot joints
- Industry's strongest aluminum beds featuring exclusive, patented Galvanized Steel Beam Technology™
- On-board hydraulic pressure gauge allows for easy troubleshooting
- Single sheet decking on conventional and dual angle steel decks reduces weld joints and potential corrosion points
- Combination winch cable guide roller and tensioner plate
- Manual or air-controlled winch free-spool
- Corrosion-resistant lighted dual-control stations
- Federal Motor Carrier Safety Administration DOT 393 compliant crash protection headboard
- Industry's most advanced high performance hose and wire cable-tracking system
- Industry's highest standard DOT reflectivity and lighting levels
- 12 key slots standard

ACCESSORIES

- Exclusive R.A.I.L.™ System (Rear Awareness Indicator Lights)
- Wireless remote with exclusive ARM™ (Actuated Remote Mechanism) system
- LED emergency lighting
- Multiple work light mounting locations
- 36", 48" & 60" toolboxes, storage trays and baskets
- Galvanized subframe and wheel lift components

DECK

- Length:
 - 20' XLP - Isuzu™ (no wheel lift) (19' Std available)
 - 22' XLP - Isuzu™ and Hino™ (21' Std available)
- Capacity: 12,000 lbs.
- Width: 96", 102"
- Style (aluminum option):
 - Conventional or dual angle
 - Extruded 6061-T6 decking
 - Fixed or removable side rails
- Style (steel option):
 - Conventional or dual angle
 - 3/16" diamond or smooth decking
- Winch (worm gear):
 - 8,000 lbs.—3/8" X 56' wire rope
 - 10,000 lbs.—7/16" X 56' wire rope

WHEEL LIFT

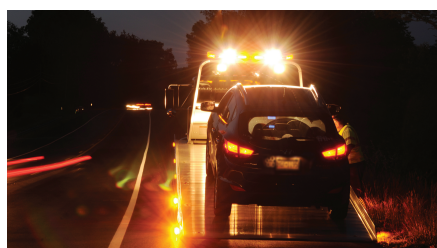
- Lift Capacity: 3,500 lbs.
- Tow Capacity: 10,000 lbs.
- Maximum Extended Reach: 68"
- Ground Approach Angle: 3 degrees

CHASSIS

- Minimum RBM: 1,000,000 in.-lbs.
- Usable CA (WB):
 - 120"-132" (148"-160")—20' XLP (19' Std)
 - 144"-150" (172"-178")—22' XLP (21' Std)
- Minimum GVWR:
 - With wheel lift: 19,500 lbs. total (13,500 lbs. rear)
 - Without wheel lift: 15,000 lbs. total (11,000 lbs. rear)



Side-mounting helps to minimize potential blockage from payloads



15 degree angular placement increases horizontal visibility while deck is tilted

