

# THE NEW 20' XLP LOW PROFILE CARRIER

— Lower deck height • Lower load angle • Lower cost —

Jerr-Dan's new 20' XLP is now available for the Ford F550 and Dodge 5500 chassis without the need to invest in costly chassis modifications. Same performance, lower cost... now that's value you can latch onto.



## HAUL THEM ALL



**JERR-DAN**<sup>®</sup>

jerrdan.com | 800.926.9666

# SHEET SPEC

## FEATURES

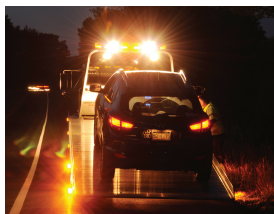
- Load angles as low as 7.5°
- World's lowest maintenance carrier including No-Lube™ technology for slide pads and pivot joints
- Industry's strongest aluminum beds featuring exclusive, patented Galvanized Steel Beam Technology™
- On-board hydraulic pressure gauge allows for easy troubleshooting
- Single sheet decking on conventional & dual angle steel decks reduces weld joints & potential corrosion points
- Combination winch cable guide roller / tensioner plate
- Manual or air controlled winch free-spool
- Corrosion resistant lighted dual control stations
- Federal Motor Carrier Safety Administration DOT 393 compliant crash protection headboard
- Industry's most advanced high performance hose / wire cable-tracking system
- Industry's highest standard DOT reflectivity and lighting levels
- 12 key-slots standard

## ACCESSORIES

- Exclusive R.A.I.L.™ System (Rear Awareness Indicator Lights)
- Wireless remote with exclusive ARM™ (Actuated Remote Mechanism) system
- LED emergency lighting
- Multiple work light mounting locations
- 36", 48", 60" & 78" toolboxes, storage trays and baskets
- Automatic throttle-up on-demand (subject to chassis configuration)
- Galvanized subframe and wheel lift components



Side-mounting helps to minimize potential blockage from payloads



15 degree angular placement increases horizontal visibility while deck is tilted

## DECK

- Length: 20'
- Capacity: 12,000 lbs.
- Width: 96", 102"
- Style (aluminum option):
  - Conventional or dual angle
  - Extruded 6061-T6 decking
  - Fixed or removable blade side rails
- Style (steel option):
  - Conventional or dual angle
  - 3/16" diamond or smooth decking
  - Fixed or removable side rails
  - Removable blade side rails
- Winch (worm gear):
  - 8,000 lbs.- 3/8" X 56' wire rope
  - 10,000 lbs.- 7/16" X 56' wire rope

## WHEEL LIFT

- Lift Capacity: 3,500 lbs.
- Tow Capacity: 10,000 lbs.
- Maximum Extended Reach: 68"
- Ground Approach Angle: 3°

## CHASSIS

- Minimum RBM: 1,000,000 in.-lbs.
- Usable CA: 120" - 132" (20' deck)
- Optimal Load Angle Frame Height: 29" - 34"
- Minimum GVWR:
  - With wheel lift: 19,500 lbs. total (13,500 lbs. rear)
  - Without wheel lift: 15,000 lbs. total (11,000 lbs. rear)

