

DE assembly and operation

Please read these instructions before assembly and commissioning carefully. Keep those Guide to and instruct each user to the operation of the product.

ES Assembly and Operation Instructions

Read these instructions carefully before mounting and commissioning. Save the instructions and teach all users how to handle it.

**GB Installation and operation**

Please read this guide carefully before installation and use. Keep these instructions and provide all users with instructions on how to use it.

PT Assembly and Operation

Please read this instruction sheet carefully before assembling and using the product. Keep this instruction leaflet and explain its operation to each user.

FR Assembly and use

Please read this manual carefully before assembly and commissioning. Save these instructions. All users should be aware of it.

SE Assembly and Handling

Read the instructions carefully before mounting and first use. Save the instructions and instruct all users on the use.

NL Assembly and operation

Read this manual carefully before installation and commissioning. Keep this manual and inform each user of its operation.

DK Assembly and handling

Read this manual carefully before installation and commissioning. Keep the instructions and instruct each user about the bet.

IT Assembly and use

We recommend that you read the instructions carefully before mounting and commissioning. Keep the instructions and instruct each user on how to operate.

HU Installation and operating instructions

Read this instruction manual carefully before installation and use. Keep this manual for as long as you use the product and inform users of the product about its operation.

DE Opening the key compartment

1. Slide down protective panel A
2. Set number combination B (factory setting 0000)
3. Press down the opening button C
4. Remove key
5. Close the key compartment with the number combination unchanged
6. Adjust number combination B
7. Slide protective panel A upwards

ES Key compartment opening

1. Slide down protection panel A
2. Set Combination B (Factory setting 0000)
3. Press the opening button C
4. Take out the key
5. Close the KeyGarage without altering the code
6. Rotate the B digits and alter the code
7. Slide protection panel A up

GB Open the key drawer

1. Push down the protective cover A
2. Set the code B (factory setting 0000)
3. Press the open button C
4. Take out the key
5. Reclose the drawer without scrambling the code
6. Rotate the four dials B to scramble the code
7. Push up the protective cover A

PT Open the key compartment

1. Open the cover of code A below moving to
2. Enter code B (factory code 0000)
3. Press the opening button C
4. Remove or insert your keys
5. Close KeyGarage without changing codes 6. Change to any random B code
7. Close code A cover by moving to up

FR Opening the key compartment

1. Slide protective cover A down
2. Enter combination B (factory setting 0000)
3. Push the opening button C down
4. Remove objects such as keys, etc.
5. Close the key compartment without scrambling the combination 6. Scramble combination B
7. Slide protective cover A upwards

SE Opening the key compartment

1. Slide down the protective cover A
2. Set the number combination B (Factory setting 0000)
3. Press the opening button C
4. Remove the key
5. Close the door of the box without changing the code
6. Then change the numbers on the 4 knobs to distort code B
7. Slide the protective cover A up

NL Opening the key compartment

1. Slide protective flap A downwards
2. Enter number combination B (factory setting 0000)
3. Press the opening button C down and open the key compartment
4. Take the keys from the key compartment
5. Close the key compartment again without the number adjustable combination
6. Adjust the number combination B
7. Push the protective cap A up

DK Opening of door

1. Slide the protective flap down A
2. Set the code B (is from the factory) set to open with code 0000)
3. Press the C button down
4. Remove the key
5. Close the door again with unchanged talcombination
6. Turn the code wheels to random digits B
7. Slide the protective flap up on A

IT Opening the key box

1. Slide the protective panel A towards the low
2. Set the number combination B (Default setting 0000)
3. Push the release button C downwards
4. Pre-wash the key
5. Close the safety deposit box without changing the number combination
6. Turn the 4 digits B to mask the combination
7. Slide the protective panel A upwards

HU Open the keystore

1. Slide off the cover A
2. Set the number combination to B (factory default code is 0000)
3. Press button C, open the key store
4. Remove the key
5. Close the key storage door with an unchanged number combination
6. Set the number combination to B
7. Push up the cover A

**DE Caution!**

- Be sure to change the combination of numbers at the first start-up!
- Remember your personal code!
- Should you forget the code, an opening is required the KeyGarage is no longer possible!

ES Attention!

- It is imperative that you change the combination numerical during the first start-up!
- Memorize your personal code well!
- If you lose the code, you will not be able to reopen the „KeyGarage“!

GB Important!

- Please ensure that the numerical code is changed during initial commissioning!
- Make sure to remember your personal code!
- If the code gets lost it is impossible to open the KeyGarage!

PT Heads up!

- It is essential that you change the number combination for the first start-up!
- Memorize your personal code well!
- If you lose the opening code, you will not be able to re-open KeyGarage!

FR Attention!

- You must change the combination of digits during the first commissioning!
- Memorize your personal code!
- In case of loss of the code, it is no longer possible to open the KeyGarage!

SE Note!

- You must change the number combination at first use!
- Write down your personal code!
- It is not possible to open the KeyGarage device again if you have lost the opening code!

NL NB!

- Always change when using for the first time the number combination!
- Remember your personal code!
- If you lose the code, it's no more possible to open the KeyGarage!

DK Important!

- Always change the number combination by it first commissioning!
- Remember your personal code!
- If you lose the number combination, it is no longer possible to open KeyGarage!

IT Attention!

- Change the number combination to the first one put in action!
- Memorize your personal code well!
- If you lose the combination for opening, the KeyGarage can no longer be opened!

HU ATTENTION!

- When using for the first time change the factory number combination!
- Make a good note of your code!
- If you forget the code, it will no longer be can you open the keystore!

DE Setting the number combination

1. Open the key compartment
2. Press reset button D to the left and then down
3. Set the number combination you want
4. Reset reset button

ES Combination setting

1. Open the key compartment
2. Move the reset button D to the left and then press it
3. Enter the desired combination
4. Put the reset button back on its initial position

GB Set the number combination

1. Open the key drawer
2. Press the reset button D to the left and push it down
3. Set the desired code
4. Push the reset button back

PT Adjust the combination of digits

1. Open the key compartment
2. Move the reset button D to the left and then press down
3. Adjust the desired number combination
4. Return the reset button to zero

FR Combination Programming

1. Open the key compartment
2. Push the reset button D towards the left and press it
3. Dial the desired combination
4. Release the reset button

SE Setting the number combination

1. Open the key compartment
2. Press the reset button D to the left and then down
3. Set and note the desired number combination
4. Reset the reset button

NL Setting the number combination

1. Open key compartment
2. Press reset button D first to the left and then down
3. Enter desired number combination
4. Return the reset button to its original position

DK Code setting

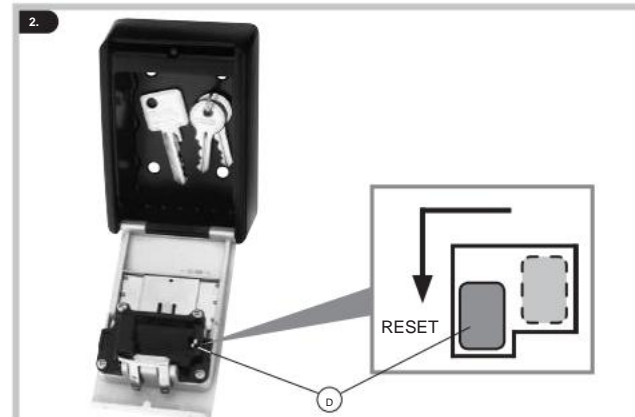
1. Open the door
2. Press the "reset" button D to the left and press it down
- Set your own code
4. Push the "reset" button back

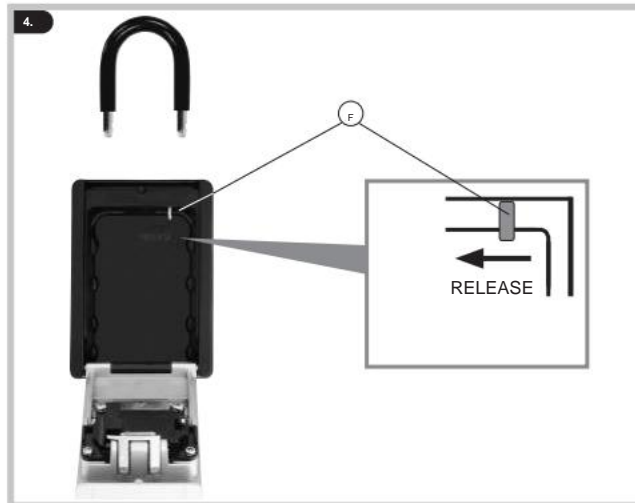
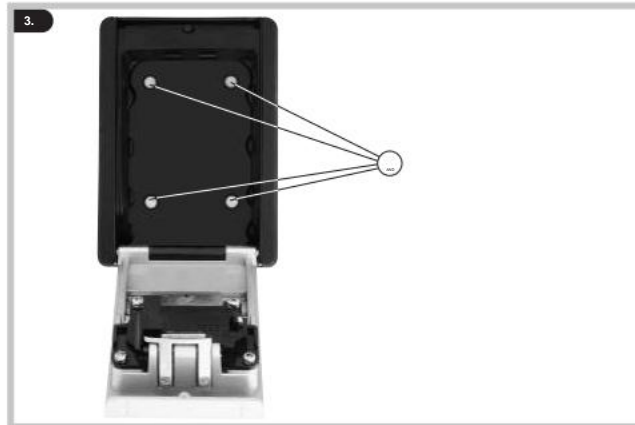
IT Setting the number combination

1. Open the key safe
2. Move the reset button D to the left and then down
3. Enter the desired number combination
4. Return the reset button to its original position

HU Set the number combination

1. Open the keystore.
2. Push the "Reset" button D to the left and press it down.
3. Set the desired number combination.
4. Reset the "Reset" button.





- DE Wall mount KeyGarage™ 787**
1. Open KeyGarage at the desired one place spot
 2. Mark drill holes E, if necessary with water level
 3. Drill holes, insert dowels
 4. Screw on the KeyGarage and close the compartment

- ES Model 787 Wall Mount**
1. Place the KeyGarage in the desired place
 2. Mark the holes to be drilled E in case necessary, align with a level
 3. Drill the holes and put the plugs
 4. Screw the KeyGarage back on and close the key compartment

- GB Wall mounting Keygarage™ 787**
1. Position the KeyGarage as desired
 2. Accurately mark the drill holes E
 3. Drill the holes and insert wall plugs
 4. Screw KeyGarage to wall via wall plugs and reclose the key drawer

- PT Model 787 wall mount**
1. Place the KeyGarage in the desired position
 2. Mark the holes to drill E, align, eventually with bubble level
 3. Drilling, placing the bushings
 4. Screw in the KeyGarage and close it again the key compartment

- FR Montage mural KeyGarage™ 787**
1. Place the KeyGarage in the desired location
 2. Mark the location of the holes to be drilled E align if necessary with a spirit level
 3. Drill the holes, insert the dowels
 4. Fix the KeyGarage with the screws and close the key compartment

- SE Wall mounting model Key Garage™ 787**
1. Place the KeyGarage in the desired location
 2. Mark the boreholes E align if necessary with spirit level
 3. Drill the holes and insert the plug
 4. Screw on the KeyGarage and close the key compartment again

- NL Wall mount KeyGarage™ 787**
1. Place the KeyGarage on the desired mounting positioning place
 2. Mark holes E, use if necessary, a spirit level
 3. Drill holes and apply plugs
 4. Screw on the KeyGarage and close the key compartment again

- DK Mounting model KeyGarage 787 on wall**
1. Place the key box where desired
 2. Mark the boreholes E exactly
 3. Drill the holes and insert rawplugs
 4. Screw on the key box and close the door

- IT Wall Mount KeyGarage™ 787**
1. Place the KeyGarage in the desired location
 2. Mark the points to drill AND use possibly a level
 3. Drill with the drill, insert the plugs
 4. Secure the KeyGarage with the screws and close the safe-deposit box

- HU Installing the Keystore 787 KeyGarage™**
1. Place the open keystore in the desired location.
 2. Mark the location of the holes E if necessary adjust with a spirit level.
 3. Drill the holes, insert the dowel.
 4. Screw on the key fob and close it.

- DE Mounting bracket model KeyGarage™ 797**
1. Lever F to open the bracket to the left to press
 2. Pull the bracket up and out
 3. Hang the bracket in the desired position and close it again with the KeyGarage

- ES Assembling the model with arch 797**
1. Press lever F to the left to open the bow
 2. Extract the bow by pulling it up
 3. Place the arch in the desired position and close again with KeyGarage

- GB Mounting shackle Keygarage™ 797**
1. Press the lever F to the left to open the shackle
 2. Pull out the shackle to the top
 3. Hang the shackle at the desired position and close again with the KeyGarage

- PT Mounting the clamp model 797**
1. Press lever F for clamp opening to the left
 2. Remove the clamp upwards
 3. Hang the clamp in the desired position and close again with KeyGarage

- FR Mounting the KeyGarage™ 797 Shackle Model**
1. Push the lever F to the left to unlock the handle
 2. Remove the handle upwards
 3. Hook the shackle in the desired position and close with the KeyGarage

- SE Mounting bracket model Key Garage™ 797**
1. Push the lever F to open the jumper to the left
 2. Pull the jumper upwards
 3. Hang the jumper in the desired position and lock it again with KeyGarage

- NL Mounting bracket model KeyGarage™ 797**
1. Press lever F to open the bar to the left and tighten to hold
 2. Open bracket
 3. Mount the bracket at the desired location and close the key compartment again

- DK Mounting of model 797 with bracket**
1. Press the "arm" F to the left to release the bracket
 2. Pull the bracket out of the key box
 3. Hang the hanger in the desired position and lock key box and hanger together again

- IT KeyGarage™ 797 Headband Mount**
1. Move the lever F to open the headband to the left
 2. Pull the headband up
 3. Snap the headband into place you want to close it with the KeyGarage

- HU Installing the shackle key store 797 KeyGarage™**
1. Push lever F to the left to remove the stirrup . 2. Pull the stirrup upwards.
 3. Hang the stirrup in the selected position and push the stirrup into the keystore.

DE Warranty ABUS products are designed and manufactured with the utmost care and tested in accordance with applicable regulations. The warranty extends exclusively to defects that can be traced back to material or manufacturing errors. If there is a proven material or manufacturing defect, the product will be repaired or replaced at ABUS' discretion.

In these cases, the warranty ends when the original warranty period expires. Further claims are expressly excluded.

ABUS is not liable for defects and damage caused by external influences (e.g. transport, acts of violence), improper operation, normal wear and tear and non-observance of these instructions.

If a warranty claim is asserted, the original purchase receipt with the date of purchase and a brief written description of the fault must be enclosed with the product in question.

Technical changes reserved. No liability for misprints and mistakes.

GB Warranty ABUS products are designed, manufactured and tested in accordance with applicable regulations with great care. The warranty exclusively covers faults that are caused by material or manufacturing defects. If a material or manufacturing defect can be proven, the product will be repaired or replaced at the discretion of the warrantor. In such cases, the warranty ends with the termination of the original warranty period. Any further claims are expressly excluded.

ABUS assumes no liability for defects or damage that has been caused by external influences (e.g. transport, external forces), improper use, normal wear and tear or non-compliance with this operating and installation instructions document. If a warranty claim is asserted, the product must be returned with the original receipt with date of purchase and a brief written description of the fault.

Subject to technical alterations. No liability for mistakes and printing errors.

FR Warranty ABUS products are designed, manufactured and tested with great care and in accordance with applicable regulations. The warranty only covers defects resulting from material or manufacturing defects present at the time of sale. In the presence of a proven material or manufacturing defect, the product will be repaired or replaced at the option of the guarantor. The warranty ends in such cases when the original warranty period expires. Any claims beyond this date are expressly excluded.

ABUS accepts no liability for defects and damage resulting from external influences (e.g. transport damage, use of force), improper use, normal wear or failure to observe these instructions. In the event of a claim under the warranty, the claimed item must be accompanied by proof stating the date of purchase and a description of the defect.

We reserve the right to any technical modifications. We assume no liability for any errors or printing defects.

NL Warranty ABUS products are designed, manufactured and tested with the greatest care in accordance with the applicable regulations. The warranty only covers defects that indicate material or manufacturing defects at the time of sale. If there is evidence of a material or manufacturing defect, the product will be repaired or replaced at the discretion of the guarantor. In this case, the warranty ends with the expiration of the original warranty period. Further claims are expressly excluded.

ABUS is not liable for defects and damage caused by external influences (eg transport, the effect of force), incorrect use, normal wear and tear or failure to observe this manual. When submitting a warranty claim, the product must be accompanied by the original sales receipt with date of purchase and a short written description of the fault.

Technical changes reserved. No liability for mistakes and misprints.

IT Warranty ABUS products are designed with the utmost care, built and praised in accordance with the applicable directives.

The warranty covers only the inconveniences due to material or manufacturing defects. In the event that a material or manufacturing defect is proven, the product will be repaired or replaced at the discretion of the guarantor. The quality guarantee ends in these cases on expiry of the original guarantee period. Further claims are expressly excluded.

ABUS is not responsible for defects or damage caused by external factors (e.g. transport, forced use), improper use, normal wear and tear or failure to observe these instructions. If you make a warranty claim, attach the date of purchase and a brief written description of the defect to the original purchase product.

Technical changes reserved. No responsibility is assumed for errors and misprints.

ES Warranty ABUS products are designed and produced with great care and tested in accordance with current regulations.

The warranty will exclusively cover defects that are caused by errors in materials or manufacturing. In the event that an error in materials or workmanship can be demonstrated, ABUS will decide whether to repair or replace the product. The guarantee will end in such cases with the expiration of the original period of validity of the guarantee. Claims that go beyond what is indicated are expressly excluded.

ABUS is not responsible for defects and damage caused by external influences (eg transport, use of force), improper handling, normal wear and tear and non-observance of this manual. When making a warranty claim, the purchase invoice with the date of purchase and a brief written description of the fault must be attached to the product in question.

Subject to technical modifications. No liability is accepted for mistakes or misprints.

PT Warranty ABUS products are produced with great care and are tested in accordance with current regulations. The warranty only covers damage that is due to defects in the material or due to errors in production. If a defect in the material or an error occurred in the production is proven, ABUS assumes, if necessary, the repair or replacement of the product. The warranty expires in these cases at the end of the original warranty period.

Any additional claims are excluded.

ABUS accepts no liability for damage caused by external influences (eg transport, damage caused by violent blows), improper use, normal wear and tear and failure to observe the instructions in this leaflet.

In case of activation of the warranty claim, the original purchase receipt must be sent along with the product, showing the date of purchase and a short description of the malfunction.

Except for technical modifications. No responsibility for mistakes and misprints.

SE Warranty ABUS products are carefully designed, manufactured and tested in accordance with current regulations. Garan tin only covers defects that are due to material or manufacturing defects. If there are demonstrable material or manufacturing defects, ABUS will repair or replace the product at its own discretion. In that case, the warranty expires when the original warranty period expires. Further claims are expressly excluded.

ABUS is not responsible for defects and damages due to external influences (eg transport, use of force), incorrect turning, normal wear and tear or failure to follow the instructions in the operating instructions. Attach the original receipt with the date of purchase and a short, written error description of the defect in the complained product in warranty matters.

Technical changes are reserved. No liability is accepted for printing errors and mistakes.

DK Warranty ABUS products are developed and produced with the utmost thoroughness and checked in accordance with current regulations. The warranty covers only defects due to material or manufacturing defects. If a material or manufacturing defect can be documented, repair or replace the product at ABUS's discretion. In these cases, the warranty expires at the end of the original warranty period. No further requirements can be made.

ABUS is not liable for defects or damage that has occurred as a result of external damage coming influences (eg transport, violence), improper use, normal wear and tear or non-compliance with this manual.

In the event of a warranty claim, the original receipt with the date of sale and a short written error description must be attached to the defective pro in question. duct.

We reserve the right to make technical changes. There is no liability for printing errors or other types of errors.

HU Warranty ABUS products have been designed and manufactured with the utmost care and have been tested in accordance with the applicable regulations. The warranty only covers defects that are due to a defect in material or workmanship.

In the event of a demonstrable material or manufacturing defect, ABUS will, at its sole discretion, repair or

replaces. In this case, the warranty expires at the end of the original warranty period. ABUS will not be able to accept any other warranty or indemnity claims.

ABUS shall not be liable for any defects or damages resulting from external influences (eg transport, violent exposure), improper handling, normal wear and tear and non-observance of the operating instructions. In the event of a warranty claim, the original proof of purchase with the date of purchase and a brief description of the defective product.

We reserve the right to make technical changes. We accept no liability for errors or typographical errors.

