

**Kistler Maschinen-
und Anlagenbau GmbH**
Mackstrasse 84
D-88348 Bad Saulgau, Germany
Tel +49 (0) 75 81 4 88 82-0
Fax +49 (0) 75 81 4 88 82-22
info@kistler-machine.de
www.kistler-machine.de

DESCRIPTION

The SCM machines are equipped with two PLC-controlled axis which enables the machine to cut pipes in conjunction with a plasma or oxy-fuel torch.

The work piece is clamped and turned by a driven chuck (axis 1), then the torch is moved over the pipe (axis 2). Optional, a third controlled axis can be added to enable the machine to bevel end cuts (straight, miter and branches).

All programming is menu-driven, the machine is therefore easy to operate.

APPLICATION:

Pipe cutting machines of the SCM range are used for pipe cutting and profiling in the workshop as well as on site.



SCM 630 prepared for Plasma Cutting, with 3rd controlled axis (allows bevelling of end cuts) and 540 mm through hole chuck.

SCM RANGE

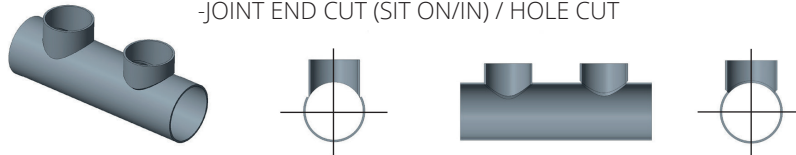
PIPE CUTTING MACHINES

**Kistler Maschinen-
und Anlagenbau GmbH**
Mackstrasse 84
D-88348 Bad Saulgau, Germany
Tel +49 (0) 75 81 4 88 82-0
Fax +49 (0) 75 81 4 88 82-22
info@kistler-machine.de
www.kistler-machine.de

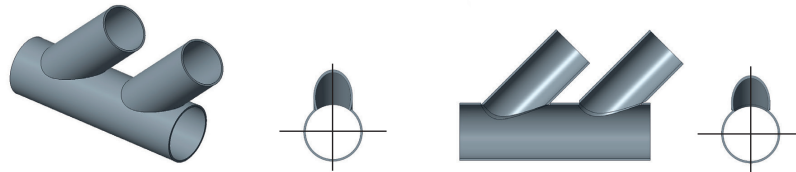
STRAIGHT CUT / MITER CUT



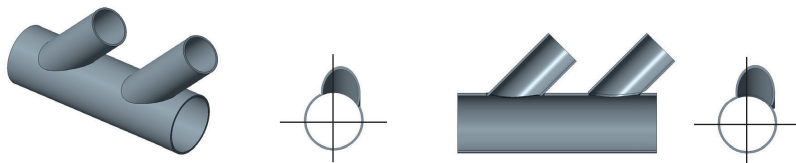
-JOINT END CUT (SIT ON/IN) / HOLE CUT



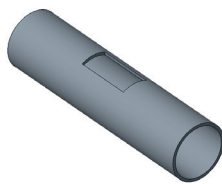
SLANT JOINT END CUT (SIT ON/IN) HOLE CUT



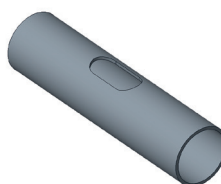
OFF-CENTER SLANT JOINT END CUT (SIT ON/IN) / HOLE CUTS



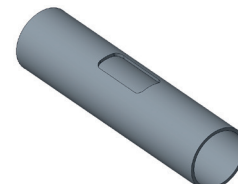
RECTANGLE



RECTANGLE WITH RADIUS



RECTANGLE WITH PROGRAMMABLE RADIUS



Model	Workpiece diameter		Torch stroke (mm)	Through-hole (mm)	Cutting speed (mm/min)
	min. (mm)	max. (mm)			
SCM 300	25	300	500	100	2000
SCM 400	25	400	1000	150	2000
SCM 630	25	630	1500	200	2000

- We reserve the right to alter specifications without prior notice -

SCM RANGE

PIPE CUTTING MACHINES