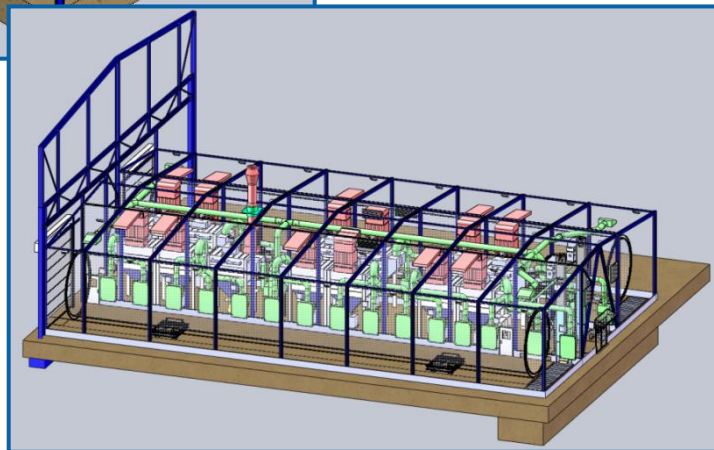
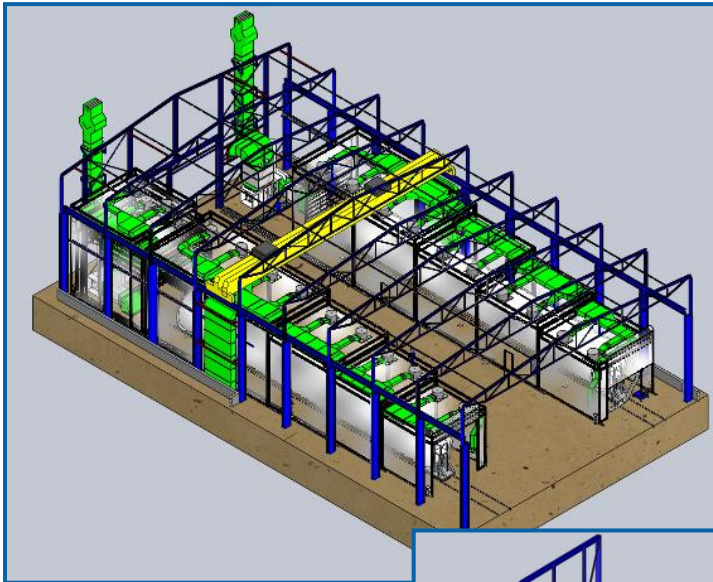


Blastrooms, combined paint spraying and drying booths and open-space paint spraying system



Industry sector:
Wind energy sector

Work piece:
Wind towers

Year of construction:
2009

Technical data:

- 2 Blastrooms 38 x 7.5 x 6.5 m
- 2 Telescopic combined paint spraying and drying booths with long-range nozzles 42 x 7 x 7 m
- 1 Open-space paint spraying system with long-range nozzles 14 x 7 x 10 m

Special features:

- Blastrooms with circulating air mode
- Combined paint spraying and drying booths with heat recovery system by plate heat exchanger

2 Blastrooms with cross conveyor belt



Blasting of machine frames



Blasting of wind towers

- 1 Roll-up door each 6 x 6.2 m
- Suction power of 90,000 m³/h
- Media silo of 12,000 l
- 2 Pressure blast pots with 200 l each (can be extended to 4)
- Floor partially covered with gratings for a wheel load of 3,500 daN



Filter unit

2 Telescopic paint spraying and drying booths



Open-space paint spraying system with long-range nozzles

