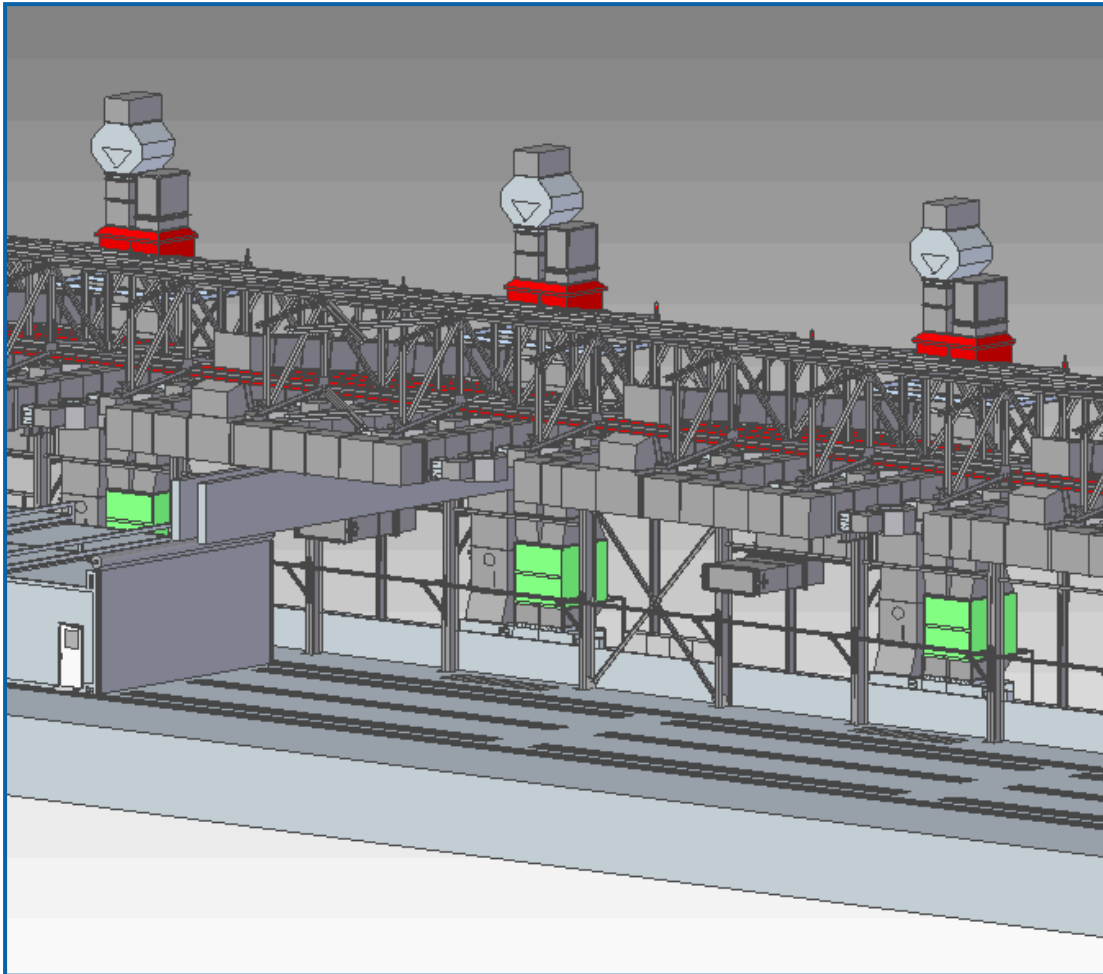


Blastroom and open-space paint spraying systems with telescopic drying tunnel



Industry sector:

Steel construction

Work piece:

Steel structures

Year of construction:

2015

Technical data:

- 1 Blastroom 16 x 6 x 5.4 m
- 4 Open-space paint spraying systems with long-range nozzles each 18 x 9 x 6 m
- 1 Telescopic drying tunnel 18 x 9 x 3.5 m

Special features:

- Open-space paint spraying systems with heat recovery systems by plate heat exchanger, person detection system with sensor technology and saver circuit for the reduction of the air capacity if no spraying work is performed
- Blastroom with exhaust air/circulating air operation and work piece transport device with pneumatic drive

Blastroom



Blastroom



Media silos

Open-space paint spraying systems with telescopic drying tunnel



Open-space paint spraying system with telescopic drying tunnel