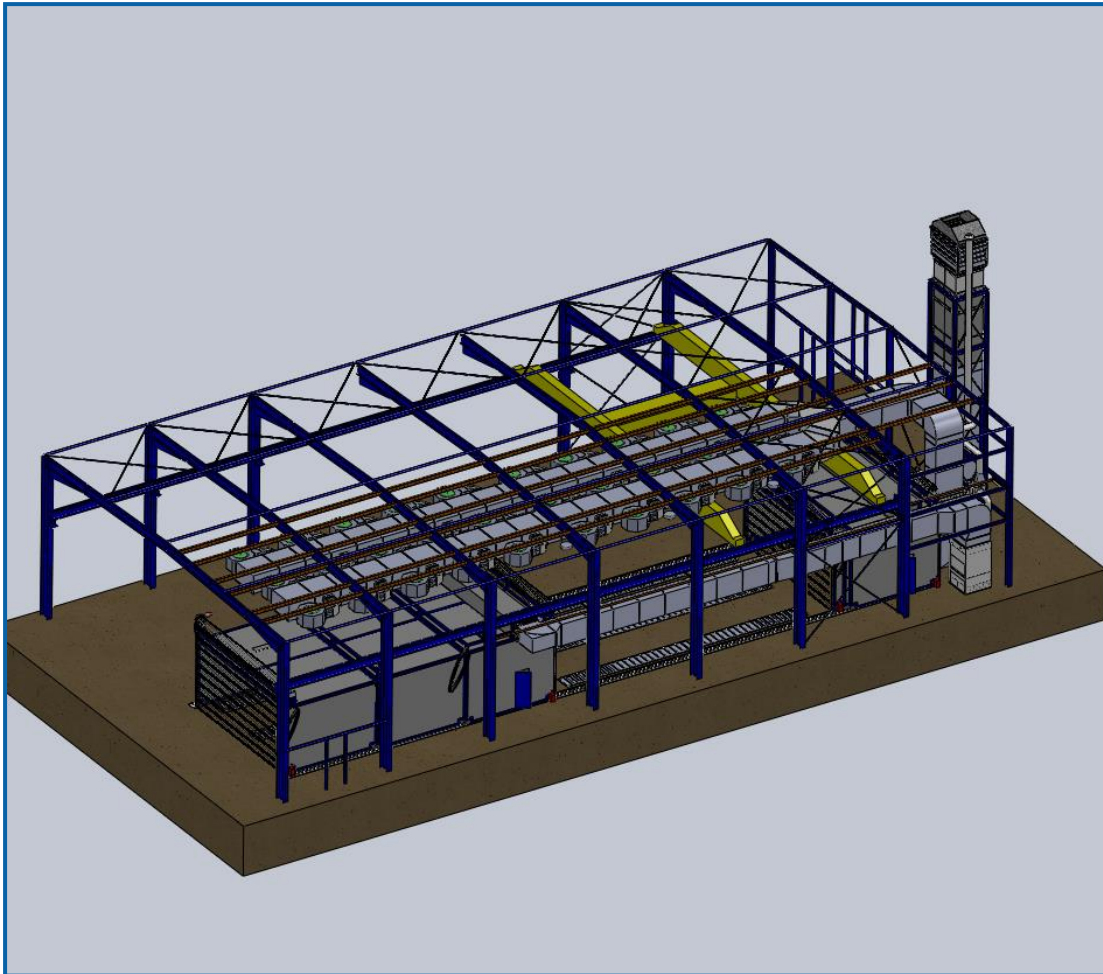


Blastroom and open-space paint spraying system with movable telescopic dryer



Industry sector:

Steel construction

Work piece:

Steel components

Year of construction:

2012

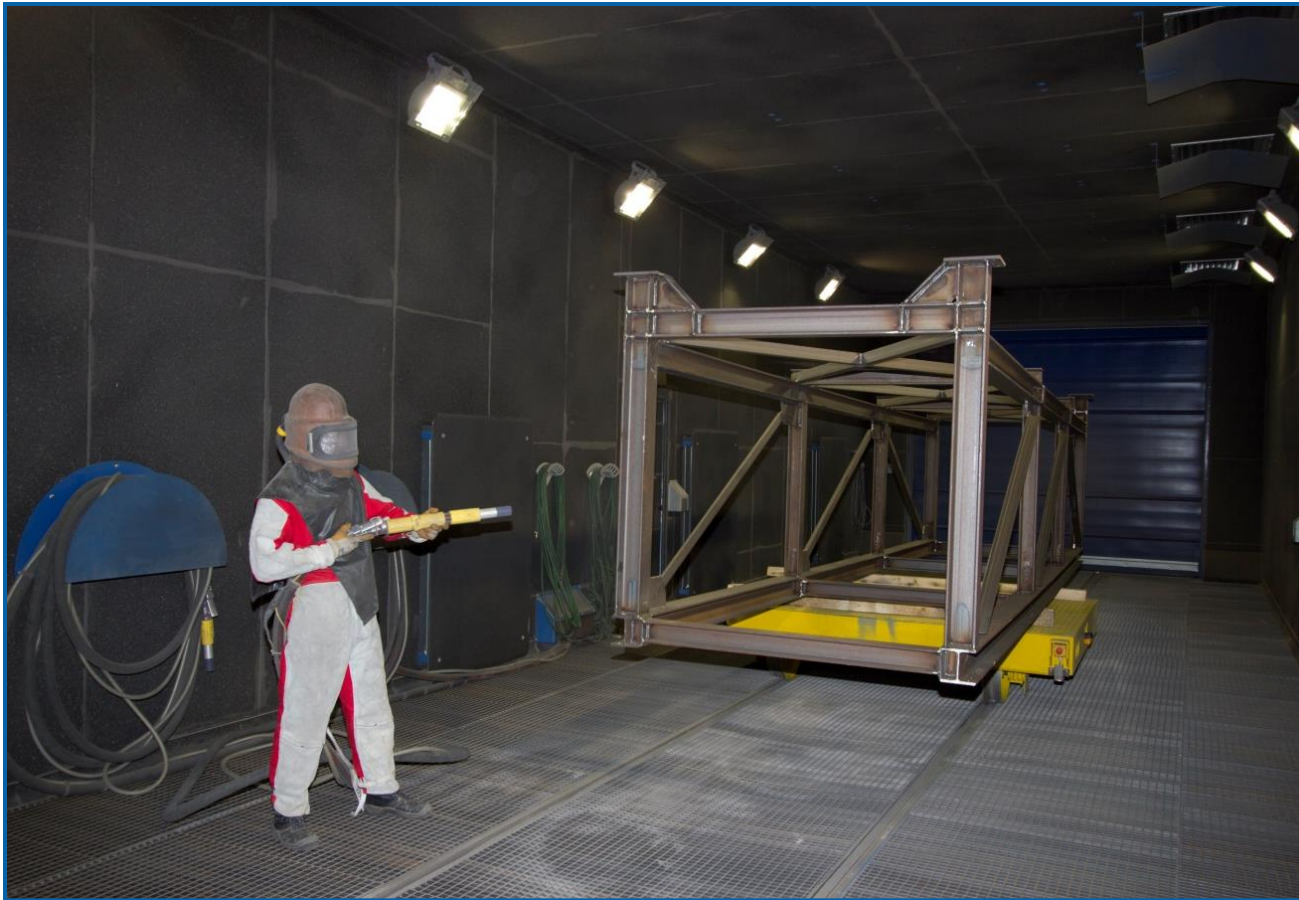
Technical data:

- Blastroom 17 x 5.5 x 4.2 m
- Open-space paint spraying system with long-range nozzles 30 x 8 m
- Movable telescopic dryer 15 x 8 x 3.5 m

Special features:

- Blastroom with maintenance platform on the silo
- Open-space paint spraying system with automatic person detection system with sensor technology, saver circuit and heat recovery system

Blastroom with longitudinal and cross lamella-type conveyor



- Suction power of 24,000 m³/h
- Media silo of 1,500 l
- 2 Pressure blast pots with 200 l each
- Maintenance platform on the silo

Open-space paint spraying system with movable telescopic dryer



Alternating parallel paint spraying and drying

Movable telescopic dryer

