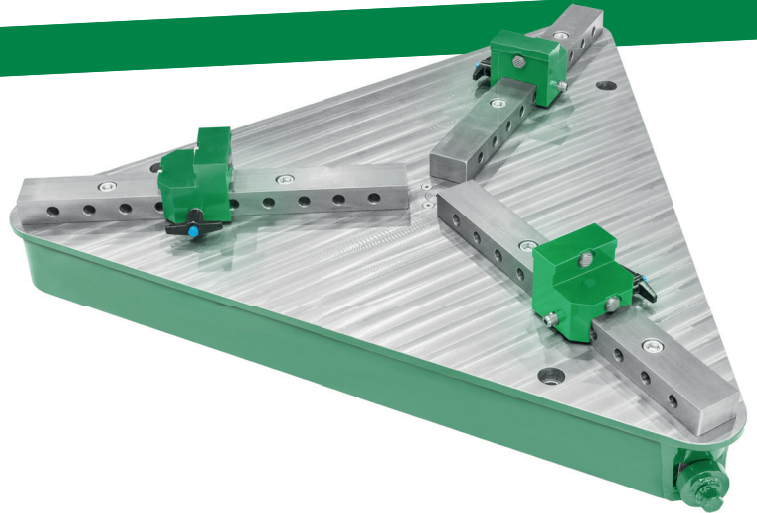


**Kistler Maschinen-
und Anlagenbau GmbH**
Mackstrasse 84
D-88348 Bad Saulgau, Germany
Tel +49 (0) 75 81 4 88 82-0
Fax +49 (0) 75 81 4 88 82-22
info@kistler-machine.de
www.kistler-machine.de

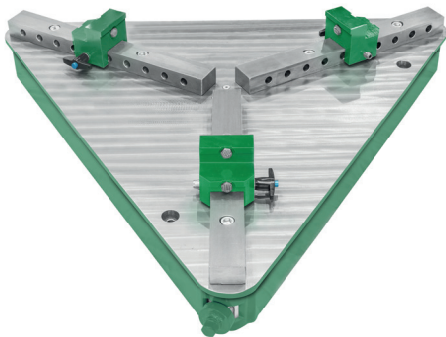
DESCRIPTION

The MC series manual chucks are designed for heavy duty purposes and have a completely closed housing, therefore this equipment is especially useful for the welding industry. Features include single point cam operation of the jaws and adjustable quick change reversible jaws. Standard delivery includes steel jaws, hardened jaws are also available.

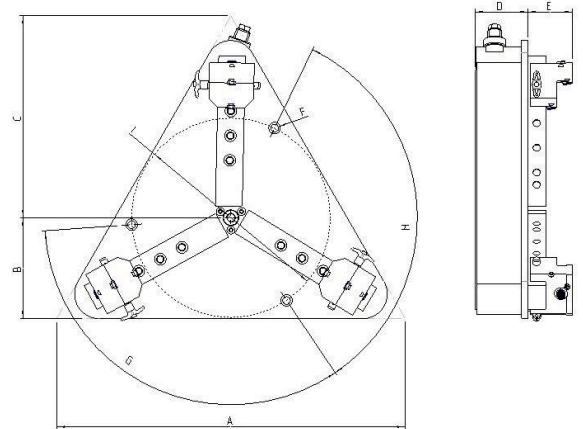


APPLICATION

Manual chucks of the MC series are used for clamping of workpieces for welding processes.



DIMENSIONS



MODEL	CLAMPING DIAMETER		A inch	B inch	C inch	D inch	E inch	F inch	G inch	H inch	I inch
	max. inch	min. inch									
MC 700	28	2	30	9	17	5	4	1	5	5	18
MC 1000	40	2	46	13	26	5	4	1	5	5	33
MC 1200	48	2	46	13	26	5	4	1	5	5	33
MC 1600	62	2	59	17	34	5	4	1	5	5	39
MC 1800	72	2	59	17	34	5	4	1	5	5	39