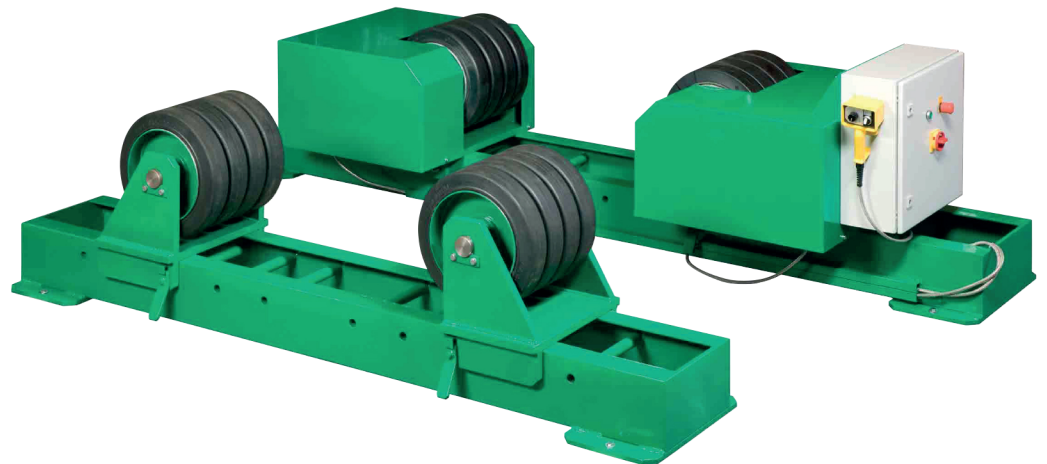


**Kistler Maschinen-
und Anlagenbau GmbH**
Mackstrasse 84
D-88348 Bad Saulgau, Germany
Tel +49 (0) 75 81 4 88 82-0
Fax +49 (0) 75 81 4 88 82-22
info@kistler-machine.de
www.kistler-machine.de

DESCRIPTION

The BR turning rolls are used for turning of work pieces, mainly for welding. A set of turning rolls consists of one drive and one idler unit, the load capacity is calculated for this set-up. Roller distance to accommodate various diameters is set manually. Standard rollers are equipped with rubber wheels, optional wheel surface can be polyurethane or steel. Standard turning speed is adjustable from 0 up to 1500 mm/min. All models can be equipped with manual or motorized bogies (option). Machines can be equipped with various controls e.g. foot switch, hand pendant or control within welder's shield.



MODEL	CAPACITY kgs	WORKPIECE DIAMETER mm		REMARKS
		min.	max.	
BR 1000	1000	70	1500	
BR 2000	2000	80	2500	
BR 5000	5000	200	3000	Double drive optional
BR 10000	10000	300	4000	Double drive
BR 20000	20000	300	4000	Double drive
BR 30000	30000	300	4000	Double drive

- We reserve the right to alter specifications without prior notice -