



**Highly efficient surface  
treatment systems**

---

**First class,  
sustainable steel  
products**



**KALTENBACH**

**POWERFUL SOLUTIONS - PASSIONATE PEOPLE**

 [www.kaltenbach.com](http://www.kaltenbach.com)





## ■ POWERFUL SOLUTIONS – PASSIONATE PEOPLE

Sawing, drilling, thermal cutting, shot blasting or painting – working with steel means creating for the future. With more than 135 years of experience, KALTENBACH is one of the leading companies in high-quality steel processing and conservation equipment, worldwide.

Creative and innovative solutions to guarantee the quality of your steel products. Durable and robust. Most environmentally friendly machines, with considerable savings on energy and consumables and best costs of ownership. Special attention is given to a safe, healthy and pleasant working environment.

Our passionate teams have worked for years to create and optimize products that give you a competitive advantage in your business.



## Highly efficient surface treatment systems First class, sustainable steel products

Surface treatment makes materials durable. Since in 1922, the GIETART brand stands for highly sophisticated shot blasting and painting systems to guarantee the quality of your steel products.

Since 2009 the GIETART brand is a part of the KALTENBACH portfolio.

Every day, our enthusiastic team of professionals works to enhance the durability and reliability of surface treatment in all facets. Our long-term expertise and drive for innovation are continuously used to reduce the costs of ownership, improve insight into the process and simplify the operation of surface treatment solutions.

Next to our well-known shot blasting and painting installations for profiles, plates and complete constructions, our scope also covers logistic, control and information systems.

Our software, machinery and skilled service and spare parts department makes it possible to install and run your machine with the highest uptime and lowest cost of ownership.

As a trendsetter and technology leader, KALTENBACH is setting standards in the industry, especially in the areas of innovation and sustainability, including an attractive and functional machine design.

■ We guarantee the quality of your steel!



### EXCEPTIONAL RELIABILITY AND MAXIMUM UPTIME

Our systems are characterized by an outstanding and industry-leading durability. The robust and reliable design enables extraordinary operating times, even with the most intensive loads.



### MOST ENVIRONMENTALLY FRIENDLY SOLUTIONS

Our systems are designed to be robust, energy friendly and require little maintenance. This ensures a long service life, with minimal wear and tear. Your products will be produced with most durable constructions, including significant energy saving possibilities.



### LOWEST COST OF OWNERSHIP

Thanks to our efficient machines, your products will be produced with the lowest possible energy consumption, a minimum usage of consumables and reduced maintenance costs. High-quality steel products made at the lowest cost of ownership.

# Highly efficient surface treatment systems

## DEVELOPED FOR STRONG PERFORMANCE

Rust. Mill scale. Impurities. Before steel is fit to be processed, it has to be cleaned. With over a century of experience, KALTENBACH | GIETART is the leading, innovative expert for steel surface treatment, with most reliable, high-quality shot blasting and conservation equipment.

### High-end blasting process

Cleaning of steel, in this case shot blasting, is carried out by hurling shot, such as small metal balls or cut wire, against the product at a velocity of approx. 80 m/sec. With our unique GIETART high performance turbines we are able to design the most effective blasting pattern and impact. The well proven construction with its triple layer housing ensures an high stability and a long lifetime of the entire system.

### Innovative painting technology

Our painting systems are characterized by maximum economy, thanks to reduced throughput times and paint consumption, as well as considerable space saving, because of minimized drying times.

### Automated painting process

The leading systems in the market for automated continuous coating systems for steel parts. Our cutting-edge technology enables you to work with highly cost-effective, environmentally friendly solutions in combination with a precise coating technique. Innovative equipment which offers you energy-efficient and resource-saving products, characterized by consistent paint layers, limited overspray and short drying times.

### Advanced powder coating techniques

New in our delivery program. High-quality powder coating systems, for a long lasting finish.

### Energy saving systems

In all steps of the shot blasting, painting and coating process, important energy saving elements have been integrated.

Our drive and pride is to protect and guarantee the quality and durability of your steel products. Every day, we continue to improve sustainability and reliability in all aspects.

■ Total design consultancy and customized solutions

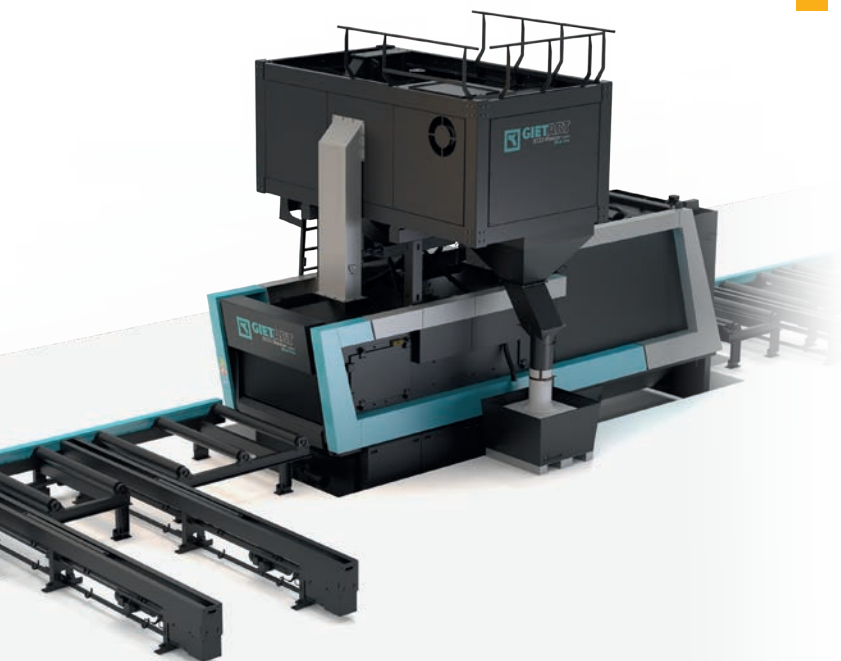


■ Our experts know your business and the challenges you have to face every day

- Most environmentally friendly
- Significant lower energy consumption
- Lowest cost of ownership
- Intelligent process monitoring and control
- Considerable noise reduction



## OPTIMAL SHOT BLASTING RESULTS, LOW RUNNING COSTS



■ Your perfect companion for efficient cleaning of plates, profiles and tubes

- Compact machine, small footprint
- Filter integrated in upper construction
- Integrated noise protection < 80dB
- Quick installation and commissioning
- Fully automatic system
- Attractive design

### Typically used by steel trade and construction companies

The ultimate fast mover of GIETART's successful shot blasting program. This cost-effective, compact system will bring you a fast pay-back time, even if you are not running 5 day 3 shift operations at this moment. With its durable construction and high-quality blasting process, you will be able to produce a wide variety of first class steel products.

Max. workplace, from 1,500 to 3,000 x 600 mm  
Number of turbines: 4, 6 or 8  
Suitable for a throughput up to 20,000 tons a year

### BENEFITS AT A GLANCE

- Highly efficient, cost effective and competitive system
- Optimal blasting and cleaning results
- Reliable and durable, high-quality end products
- Superior performance at the lowest cost of ownership
- User friendly system, easy to maintain
- Extendable with various transport systems

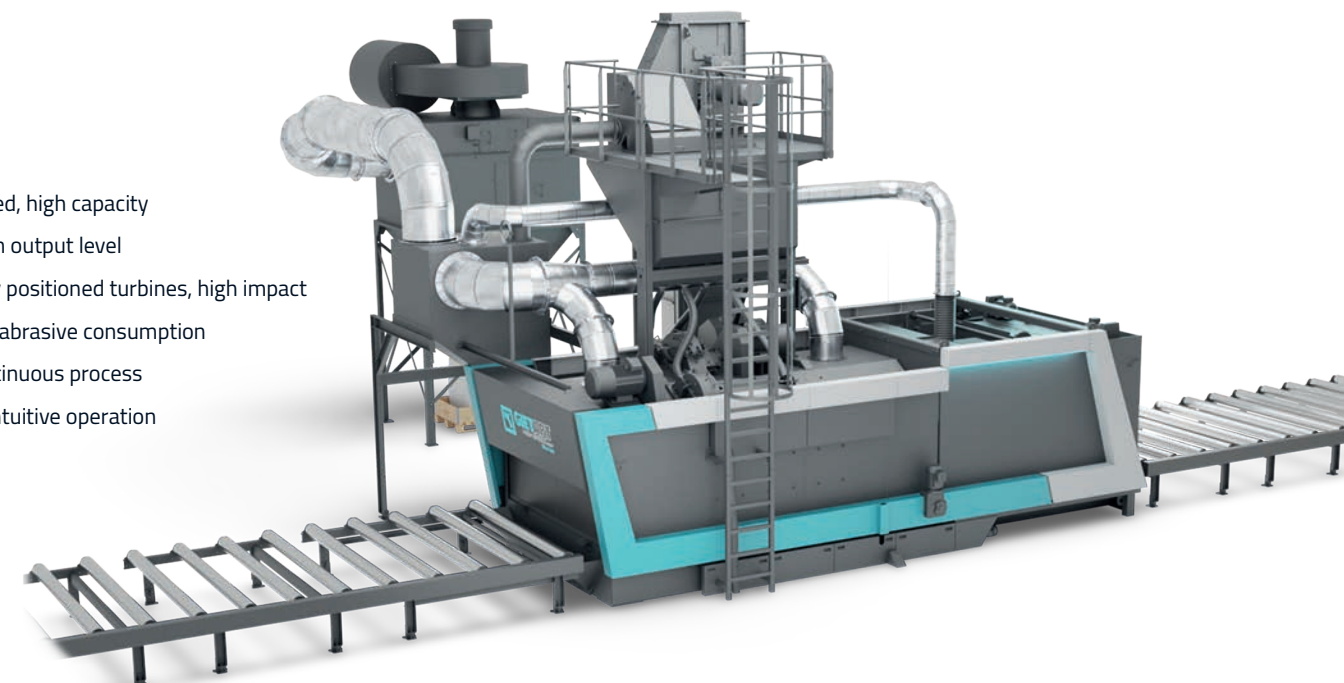
H T L U - O □



## IDEAL FOR HIGHER SPEEDS AND LARGER QUANTITIES

■ Powerful shot blasting system for cleaning plates, profiles and tubes

- High speed, high capacity
- Maximum output level
- Optimally positioned turbines, high impact
- Effective abrasive consumption
- Fully continuous process
- Simple, intuitive operation



### Typically used by larger steel traders or steel constructors, working multiple shifts, and by rolling mills.

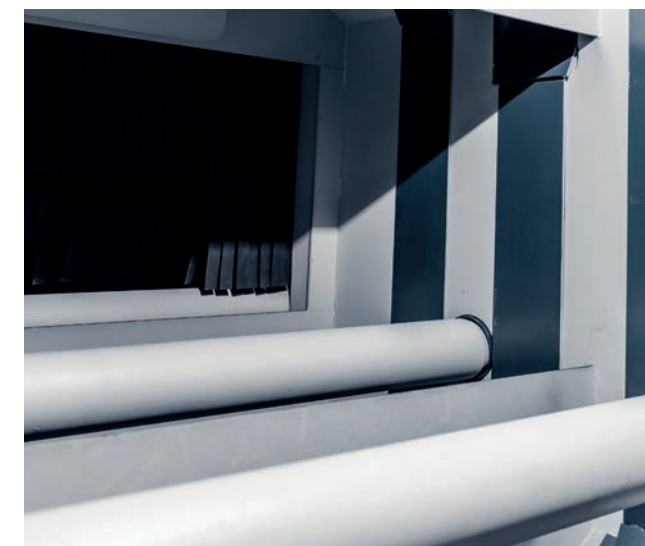
Designed for more demanding work, the GIETART High Speed range is ideal to upgrade your loading and capacity. In case of higher speeds and larger quantities, together with maximal performance, the High Speed Blaster is the machine you need.

Max. workplace, from 1,500 to 4,000 x 600 mm  
Number of turbines: 6 or 8  
Suitable for a throughput up to 50,000 tons a year, or more

### BENEFITS AT A GLANCE

- High loading and blasting capacity
- Suitable for multiple shift operations
- Reliable in realizing the maximum speed
- Unique energy saving concept
- Low emission values
- Flexible logistic solutions

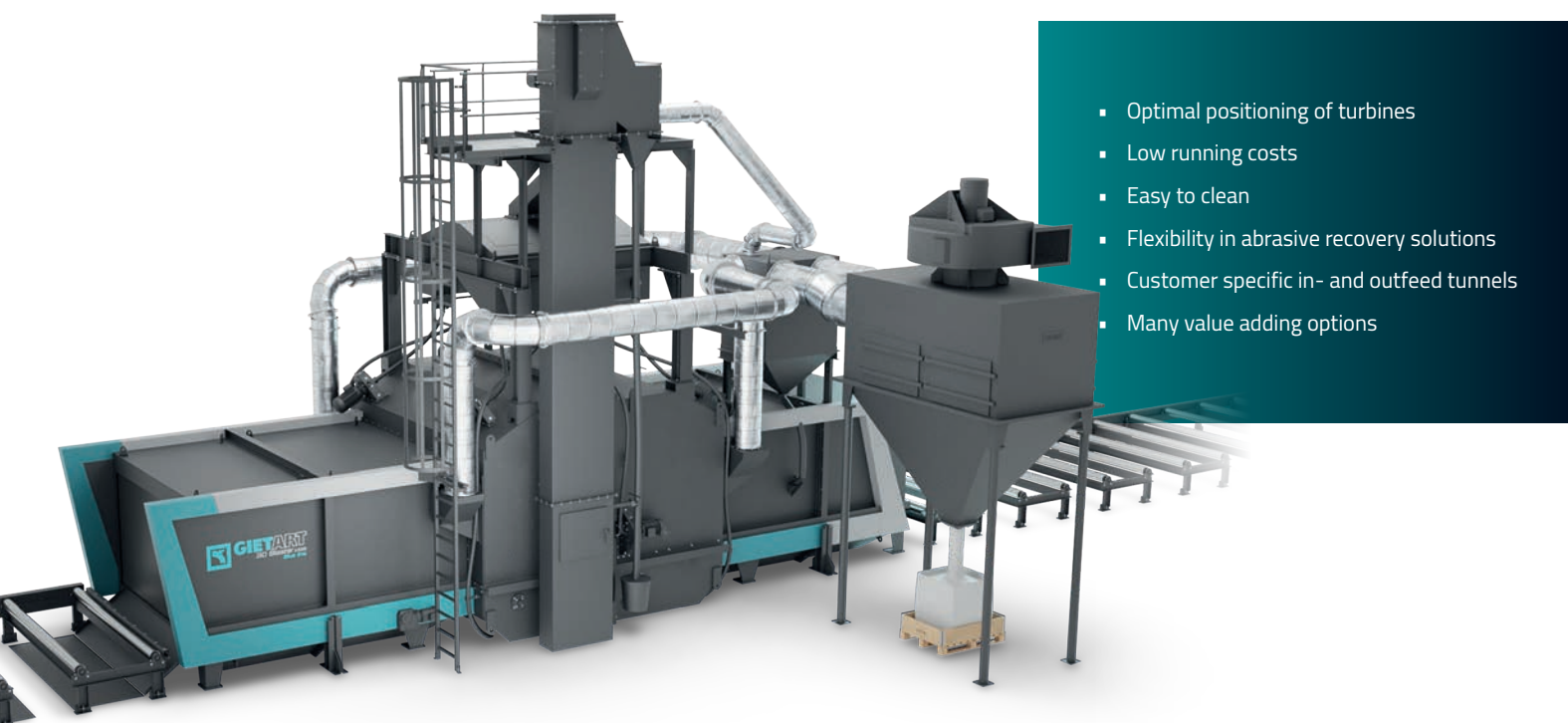
H T L U - O □





- Versatile systems for cleaning your steel products

## PERFECT FOR BLASTING WELDED STEEL CONSTRUCTIONS



- Optimal positioning of turbines
- Low running costs
- Easy to clean
- Flexibility in abrasive recovery solutions
- Customer specific in- and outfeed tunnels
- Many value adding options

### Typically used in many steel construction companies, such as manufacturers of bridges, truck chassis or in the construction of cranes

Challenge us to improve the quality of your steel constructions. Our long-time experience has shown that together we will find the best solution. Thanks to our unique turbine configurations, you can be assured that all difficult areas of the construction will be cleaned. For optimal performance, the machines can also be applied for cleaning plates, profiles and tubes.

Max. workplace, from 1,500 x 800 to 3,000 x 1,600 mm  
Number of turbines: 8 or 10  
Capacity depending on the shape and weight of the parts

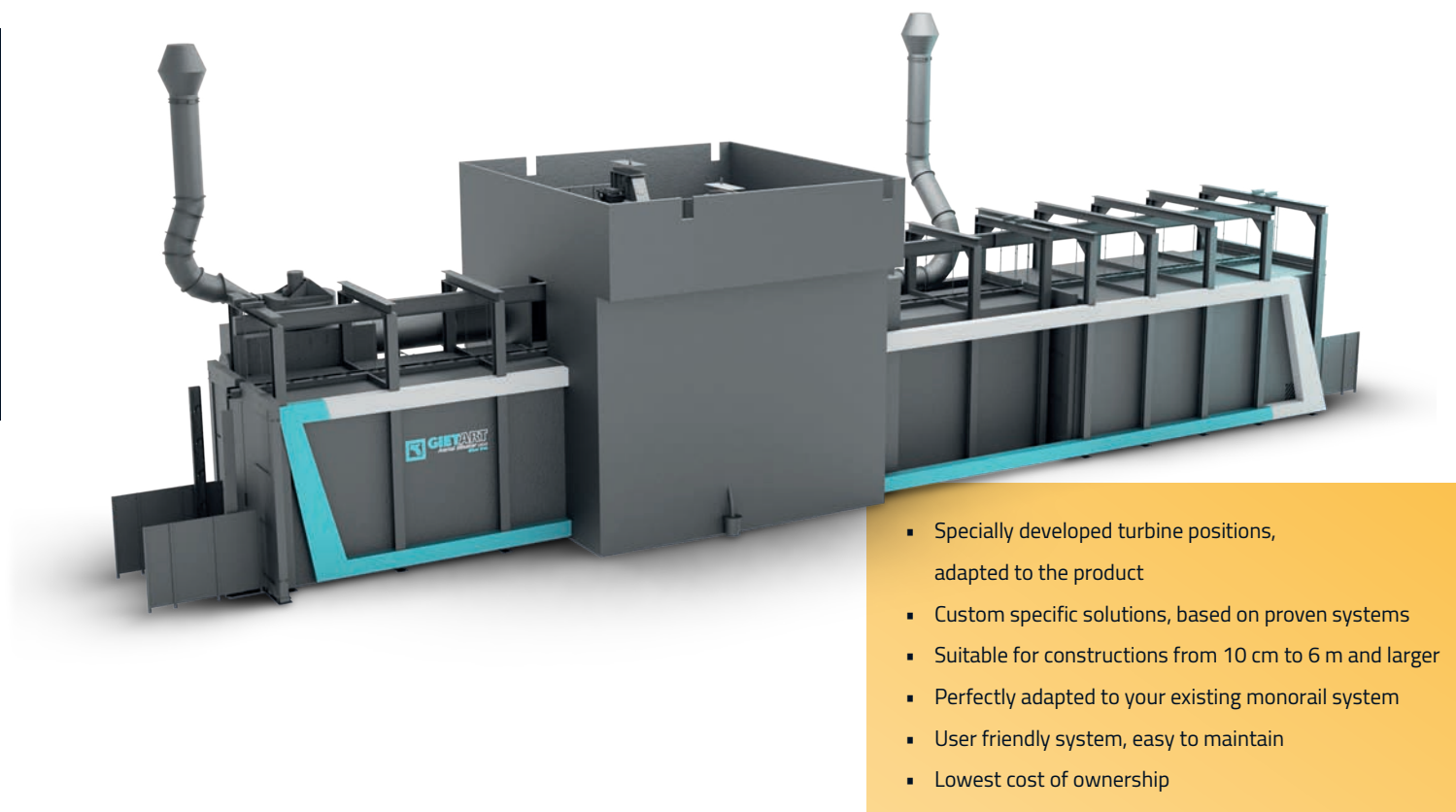
### BENEFITS AT A GLANCE

- Especially developed for welded steel constructions
- Perfectly cleaned end products
- Optimum recirculation of used abrasive
- Easy inspection and maintenance
- Option HD version: heavier turbines, higher impact, double speed
- Also available with significant energy saving option



- Constructed to meet your individual needs

## HIGH FLEXIBILITY WITH CUSTOMIZED MONORAIL BLASTERS



- Specially developed turbine positions, adapted to the product
- Custom specific solutions, based on proven systems
- Suitable for constructions from 10 cm to 6 m and larger
- Perfectly adapted to your existing monorail system
- User friendly system, easy to maintain
- Lowest cost of ownership

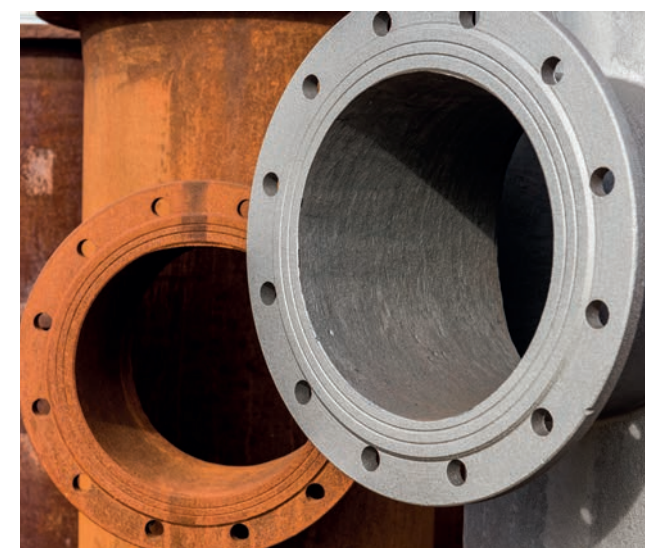
### Typically used by manufacturers of agricultural and building equipment, as well as coach and trailer builders

With our unique Aerial Blaster, you will get an innovative solution for cleaning all kinds of steel constructions, prior to painting or coating. With this system, you will buy the perfect combination of high flexibility, optimal productivity and excellent end products.

Especially designed for flexible construction parts  
Constructed to meet your individual needs  
Capacity depending on shape and weight of parts

### BENEFITS AT A GLANCE

- Unique turbine configurations for welded steel constructions
- Optimal blasting and cleaning results
- Ideal interface combination with existing monorail systems
- In line with monorail painting system
- Extendable with various transport systems
- Meeting the latest requirements in the field of safety

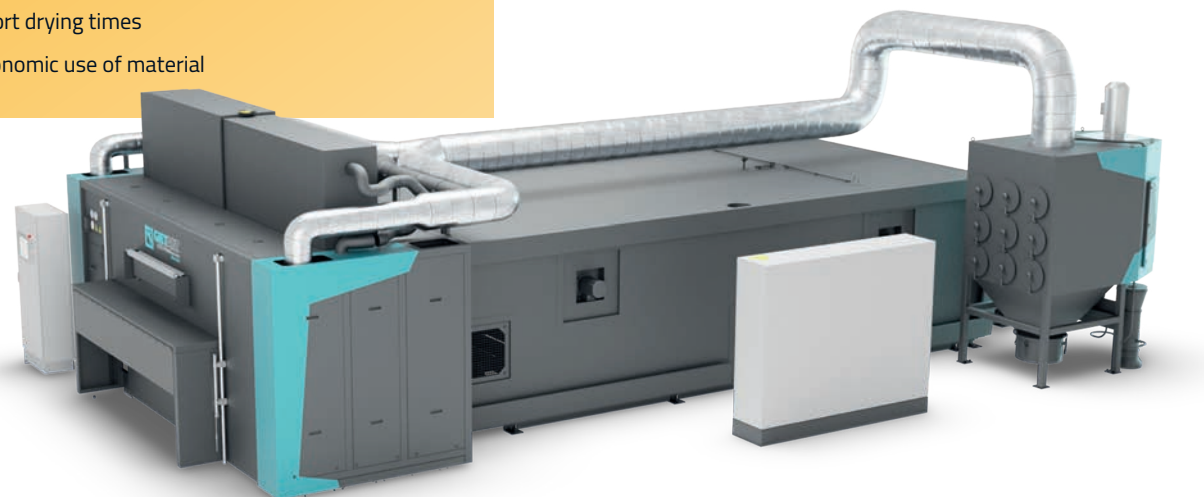




- Perfect combination with your GIETART ECO Blaster

## COMPLETE PAINTING IN A SINGLE PASS

- High quality standards
- Minimum overspray by unique airless spray guns
- Consistent coating application
- Energy efficient system
- Short drying times
- Economic use of material



Developed to protect your products, our cost-effective, environmentally friendly solutions for painting and drying. The GIETART ECO Primer range takes care of complete material painting in one single movement. Smart solutions in respect of paint consumption, drying times and maintenance, enable you to enjoy the lowest cost of ownership with this system.

Max. workplace, from 1,500 to 3,000 x 600 mm  
Number of spray guns: 4 (optional 8)  
Delivery including energy saving and fully insulated pre-heaters  
Unique mixing and filtering

### BENEFITS AT A GLANCE

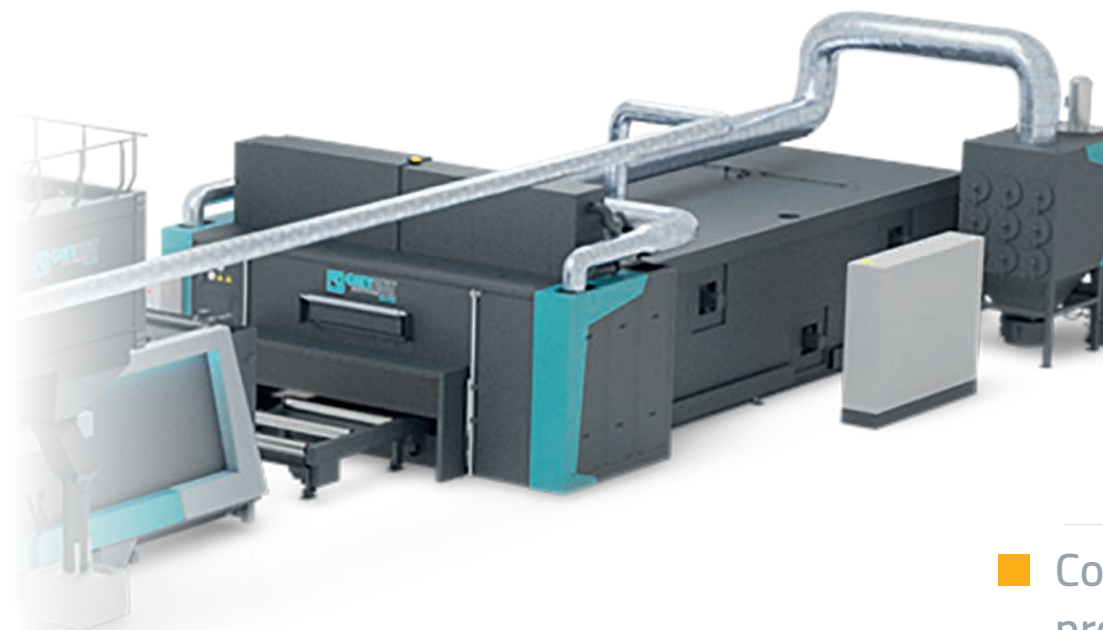
- Optimal pre-heating, painting and drying results
- Suitable for water and/or solvent based paints
- Highly efficient, cost effective and competitive system
- Sensor driven system for painting various types of steel products
- Optimal interface between shot blasting and painting system
- Extendable with VOC air treatment systems

H T L U - O □



## HIGHLY EFFICIENT PAINTING AND DRYING SYSTEMS

- Pre-heating, painting and drying in a very short time
  - Suitable for multiple shift operations
  - Quick change of paints possible
  - Minimum paint consumption
  - Safe processes
  - High-tech assistance



- Committed support and professional advice

**The Painting power beast in our portfolio. Contact us for more information about this high capacity system.**  
Ideal for pre-heating, painting and drying large quantities of steel products in a very short time. Thanks to a sophisticated spray gun concept, your paint consumption will be limited to a minimum. Multiple air flow loops take care of a highly energy and time saving drying process.

Max. workplace, from 1,500 to 3,000 x 600 mm  
Number of spray guns: 8  
Delivery including energy saving and fully insulated pre-heaters  
Unique mixing and filtering systems

### BENEFITS AT A GLANCE

- High loading and painting capacity
- Suitable for water and/or solvent based paints
- Reliable and durable, high-quality end products
- Easy to clean system, thanks to laminated and teflonized interior
- Optimized filter system, clean air
- Test possibilities available

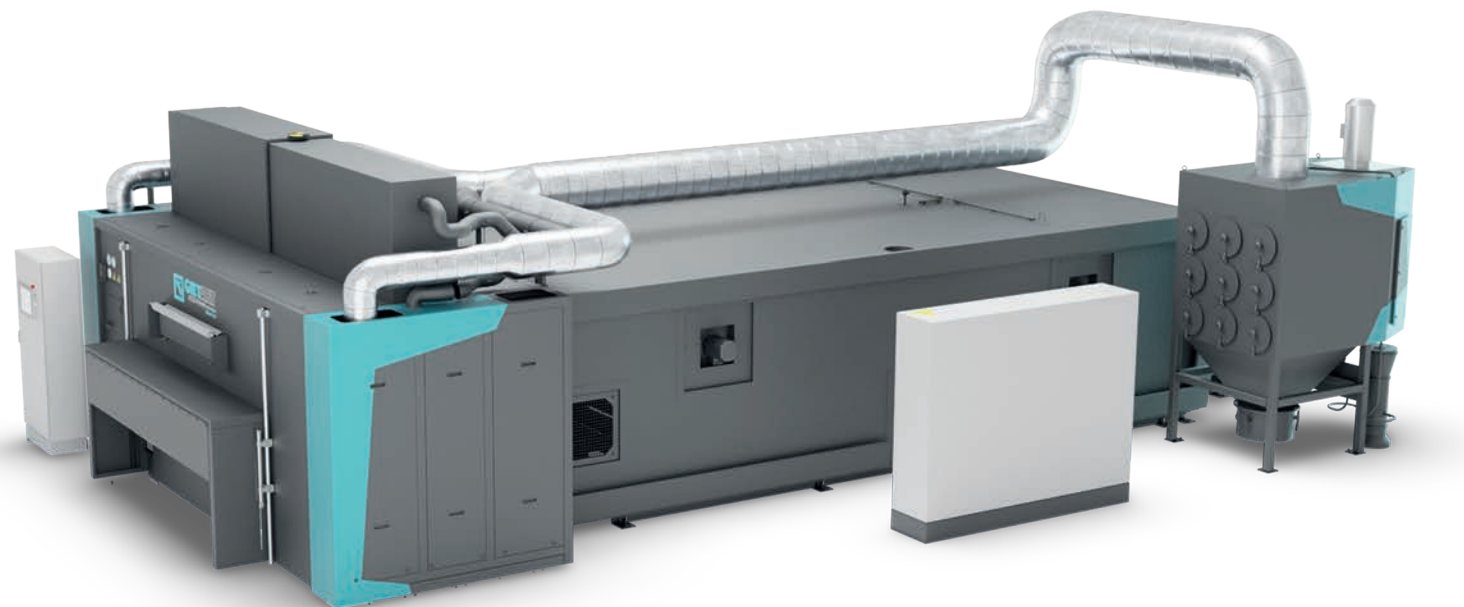
H T L U - O □





## FINAL PAINTING SYSTEM FOR CUSTOMIZED STEEL PROFILES AND STEEL CONSTRUCTIONS

- Environmentally friendly and resource-saving products



- High flexibility
- Unique 3D scanning system
- Short drying times
- Limited space requirements
- Considerable savings on gas consumption
- Easy maintenance

Do you want to supply an attractive, finished product to your customer? We are able to deliver high-end, automatic spray painting solutions for the top coating of steel constructions. The parts are painted fully automatically with the highest precision, without wasting any paint. Your average processing time for touch dry applications will be approx. 45-60 minutes.

Max. workplace, 1,500 x 800 | 2,500 x 800 | 3,000 x 800 mm  
Number of spray guns: 12 (optional 24)  
Special spray gun arrangements for welded steel constructions  
Available with unique 3D scanning system for painting various forms interchangeably

### BENEFITS AT A GLANCE

- Thickness of paint layer easy adjustable
- Suitable for water and/or solvent based paints
- Various spray gun configurations
- Minimized cleaning times
- Completely integrated control systems
- Possibility for various transport systems



# Automation

## AUTOMATED SOLUTIONS FOR EACH LEVEL OF REQUIREMENT

Process optimization and a wide range of automation possibilities enable an individual adjustment of production and transport processes, according to your requirements. From unique machine software to complete management information systems, KALTENBACH will be your system supplier. Please get in touch, anytime!



### INTELLIGENT AUTOMATION POSSIBILITIES

- Creating valuable information on process optimization
- Digital tracking and visualization of material in production
- Complete management information on performance of the machine (uptime, energy consumption etc.)
- Pro-active information on need for service and spare parts
- Pro-active management of quality/material flow
- Automated infeed/outfeed, transport and storage

### BENEFITS OF AUTOMATION

- Low staffing requirements up to low staffed shifts
- Faster material transport for higher tonnages
- Full transparency about material position and production progress





# Service

## OPTIMAL AVAILABILITY AND PERFORMANCE

With 135 years in business, we are the experts in steel processing and surface treatment. Our custom made service solutions guarantee that you benefit from an optimal performance, availability and continuous high quality output of your investment.

### ■ EXCELLENT PREVENTIVE MAINTENANCE PACKAGES

Maximum uptime can be ensured thanks to our excellent preventive maintenance packages. Together with you, our skilled engineers will keep your equipment up to date, improve your process efficiency and give advice to meet new market demands.

### ■ ADVANCED PROCESS MONITORING SYSTEMS

With the help of advanced process monitoring systems, you will get a clear insight in your machine performance, and preventive maintenance can be planned in time.



### ■ PROFESSIONAL HELPDESK

For fast and immediate assistance, you can rely on our help desk. Spare parts and assistance will be quickly on site, whenever and wherever needed.

### ■ ORIGINAL SPARE PARTS AND STARTER KITS

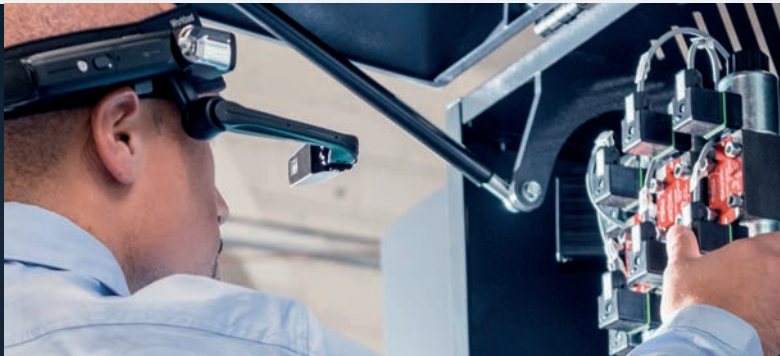
Original spare parts stand for optimum efficiency, higher uptime and a longer service life of your machine. In order to safeguard production continuity and short down time, you can make use of various starter kits. In that case you will have all parts you need on stock.

### ■ FIRST CLASS ASSISTANCE ON SITE

Knowledge, experience and a passionate commitment to support our customers in the best possible way is what makes our service strong. Together, we will look for the best manufacturing methods for your products.

### ■ EFFECTIVE TRAINING

Taylor-made training programs will improve the productivity of your machine, as well as the skills of your employees.



### GET IN TOUCH WITH OUR SERVICE DEPARTMENT!

T +31( 0) 74 2452 260  
E service@kaltenbach.com

Or check [www.kaltenbach.com](http://www.kaltenbach.com)

# Contact us!

## WE ARE THERE - WHEREVER YOU NEED US

As technological leader in the field of steel processing systems, KALTENBACH excels in product quality, innovation and design. It is our passion to supply the most reliable solution against the lowest cost of ownership, worldwide.

This includes a clear focus on the environment and saving energy and material. With our latest automation devices, you will get an optimal insight into your production process. Operation and maintenance of our solutions will be easy and user friendly. For all questions and in all cases you can rely on the fact, we are there. Wherever you need us.



|                                                                                                                                                                                                        |                                                                                                                                                                 |                                                                                                                                                                                                                             |
|--------------------------------------------------------------------------------------------------------------------------------------------------------------------------------------------------------|-----------------------------------------------------------------------------------------------------------------------------------------------------------------|-----------------------------------------------------------------------------------------------------------------------------------------------------------------------------------------------------------------------------|
| <b>KALTENBACH GmbH + Co. KG</b><br>Blasiring 4,<br>79539 Lörrach, Germany<br>Telefon: +49 (0) 7621 175-0<br>E-Mail: info@kaltenbach.de                                                                 | <b>KALTENBACH B.V. - GIETART</b><br>Pruisische Veldweg 20,<br>7552 AC Hengelo, The Netherlands<br>Telefon: +31 (0) 74 2452 452<br>E-Mail: info@kaltenbach.com   | <b>KALTENBACH Constructions de Machines S.A.S.</b><br>Z.I. de la Doller, 6 Rue de la Plaine d'Alsace<br>68520 Burnhaupt Le Haut, France<br>Telefon: +33 3 89 48 99 89<br>E-Mail: commercial@kaltenbach.fr                   |
| <b>KALTENBACH Ltd.</b><br>3 Caxton Park, Caxton Road<br>Bedford, MK41 0TY, United Kingdom<br>Telefon: +44 (1234) 213201<br>E-Mail: sales@kaltenbach.co.uk                                              | <b>KALTENBACH Middle East FZC</b><br>P6-029 Saif Zone<br>PO Box 122696, Sharjah, United Arab Emirates<br>Telefon: +971 6 557 4624<br>E-Mail: info@kaltenbach.ae | <b>ООО „KALTENBACH Russia and CIS“</b><br>108811, Moscow, City int.ter. Settlement<br>Moskovskiy, Str. Shakespeare house 22, bld. 1,<br>room 5, Russia<br>Telefon: +7 495 118 64 96<br>E-Mail: e.rozhentseva@kaltenbach.com |
| <b>KALTENBACH Schweiz GmbH</b><br>Dättwilerstrasse 43<br>5405 Baden-Dättwil, Switzerland<br>Telefon: +41 56 4704030<br>E-Mail: info@kaltenbach-schweiz.ch                                              | <b>KALTENBACH s.r.o.</b><br>Mestecko 9<br>66461 Rajhrad u Brna, Czech Republic<br>Telefon: + 420549248077<br>E-Mail: info@kaltenbach.cz                         | <b>KALTENBACH Ges.m.b.H.</b><br>Kremstraße 1<br>4053 Haid-Ansfelden, Austria<br>Telefon: +43 7229 81932<br>E-Mail: office@kaltenbach.co.at                                                                                  |
| <b>KALTENBACH Machinery (Shanghai) Co. Ltd.</b><br>Yuzhou Plaza, 299. Jin Gang Lu, Rm. 1205,<br>Pudong Yinqu, 201206 Shanghai, China<br>Telefon: +86 21 5059 1560<br>E-Mail: info.china@kaltenbach.com | <b>KALTENBACH Asia PTE Ltd.</b><br>Block 439 Choa Chu Kang<br>Avenue 4 #12-439, Singapore 680439<br>Telefon: +65 6769 0261<br>E-Mail: kalten@singnet.com.sg     |                                                                                                                                                                                                                             |

KALTENBACH reserves the right to bring changes in equipment, construction, and technical characteristics without preliminary notification. All rights reserved. No part of this publication may be reproduced in any form or by any means without prior permission in writing. Although care has been taken that the information in this publication is accurate, KALTENBACH does not accept any liability for errors or omissions.

[www.kaltenbach.com](http://www.kaltenbach.com)





## **Convince yourself of the knowledge from 135 years of experience**

With 135 years of experience in steel processing and surface treatment, KALTENBACH is able to face the challenge of a constantly changing global market with relentless innovation, high-quality process systems and an outstanding machine design.

Most environmentally friendly. Effective, safe and reliable. Our production lines and machines guarantee the right solution for any requirement in your business. Benefit from our industry expertise and generate added value - every day.

**[www.kaltenbach.com](http://www.kaltenbach.com)**

---

**Product videos:**

[www.youtube.com/kaltenbachGroup](http://www.youtube.com/kaltenbachGroup)

**Follow us on LinkedIn:**

[www.Linkedin.com/company/kaltenbach](http://www.Linkedin.com/company/kaltenbach)