

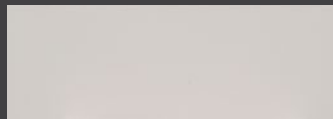


# RIVERS EDGE APARTMENTS

53 & 57 Riverview Drive  
Chatham, ON

## UNIT F 1003 sq ft

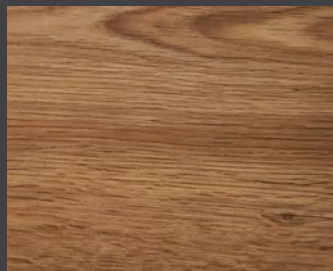
The floor plan illustrated here uses finishes from our exclusive **Palette One** collection, and include:



**CABINETS:**  
FLAT PANEL

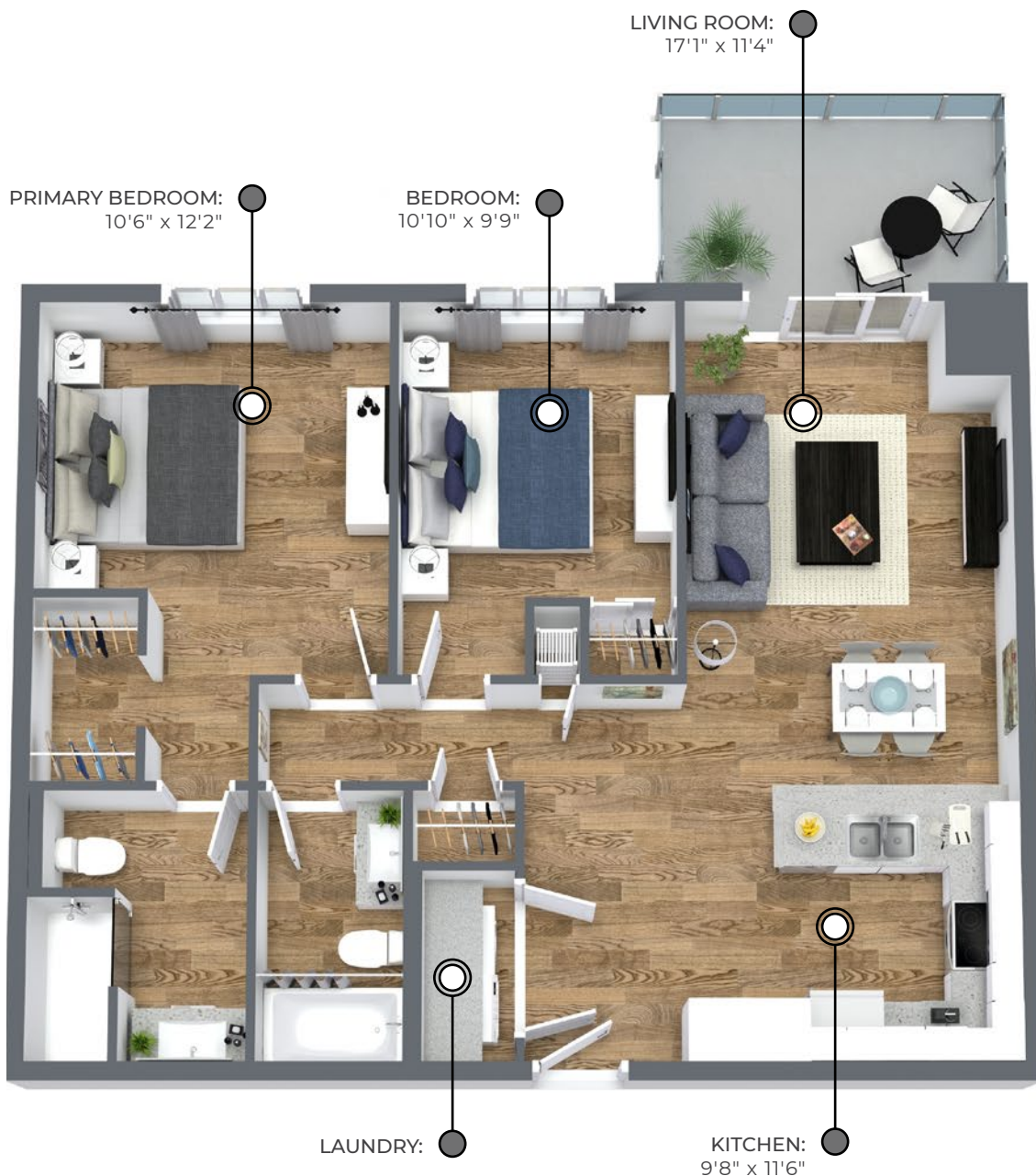


**COUNTERS:**  
QUARTZ



**FLOORING:**  
LUXURY  
VINYL PLANK

Palette One finishes are on  
levels 1 & 3.



All suite measurements are preliminary based on current building concept and unit configurations and are subject to change.  
[riversedgeapartments.ca](http://riversedgeapartments.ca)



# RIVERS EDGE APARTMENTS

53 & 57 Riverview Drive  
Chatham, ON

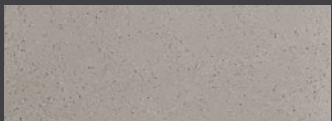
## UNIT F

**1003** sq ft

This suite is also available with finishes from our **Palette Two** collection, and include:



**CABINETS:**  
FLAT PANEL



**COUNTERS:**  
QUARTZ

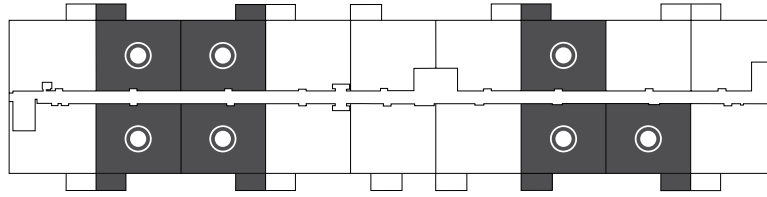


**FLOORING:**  
LUXURY  
VINYL PLANK

Palette Two finishes are on  
levels 2 & 4.

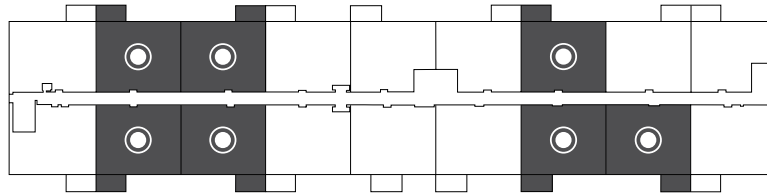
### First Floor

Suites 102, 106, 107, 110, 111, 114 & 115



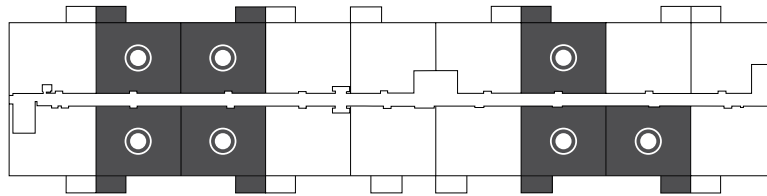
### Second Floor

Suites 202, 206, 207, 211, 212, 215 & 216



### Third Floor

Suites 302, 306, 307, 311, 312, 315 & 316



### Fourth Floor

Suites 402, 406, 407, 411, 412, 415 & 416

