

### DM-01-2

Installation Manual

For more information or installation assistance, contact our customer support team.

1-800-828-9414  
sales@progressivedesk.com

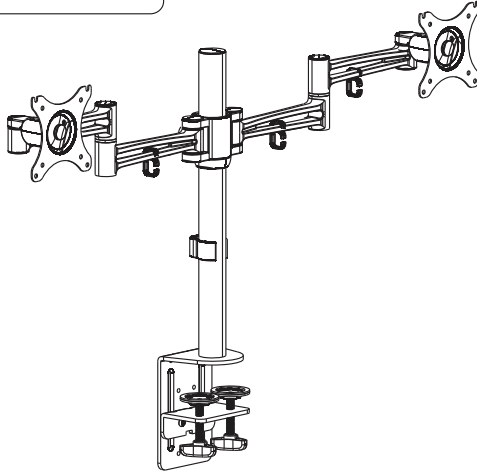
VESA  
75x75  
100x100

17" - 30"

max  
22 lb

-85° ~ 15°

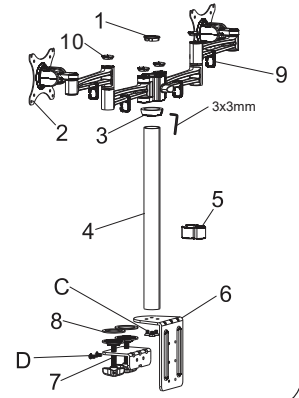
0.80" - 4"



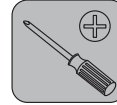
#### Parts List

M4x12MM A(x8)	M5x12MM B(x8)	M6x20MM C(x3)	M6x10MM D(x2)
φ6.5xφ13x2 E(x16)	3x3MM F(x1)	4x4MM G(x1)	5x5MM H(x1)

1. Tube Cover (x1)
2. Monitor Plate (x1)
3. Lock Collar (x1)
4. Tube (x1)
5. Cable Cover (x1)
6. Bottom Support (x1)
7. Knob (x1)
8. Anti-Slip Rubber (x2)
9. Cable Hooks (x4)
10. Joint Cover (x4)

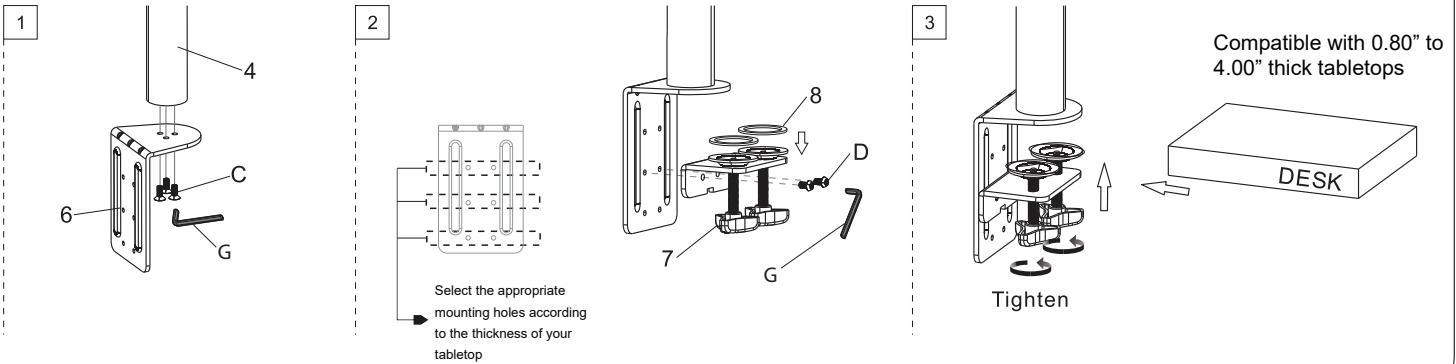


#### Tools Needed



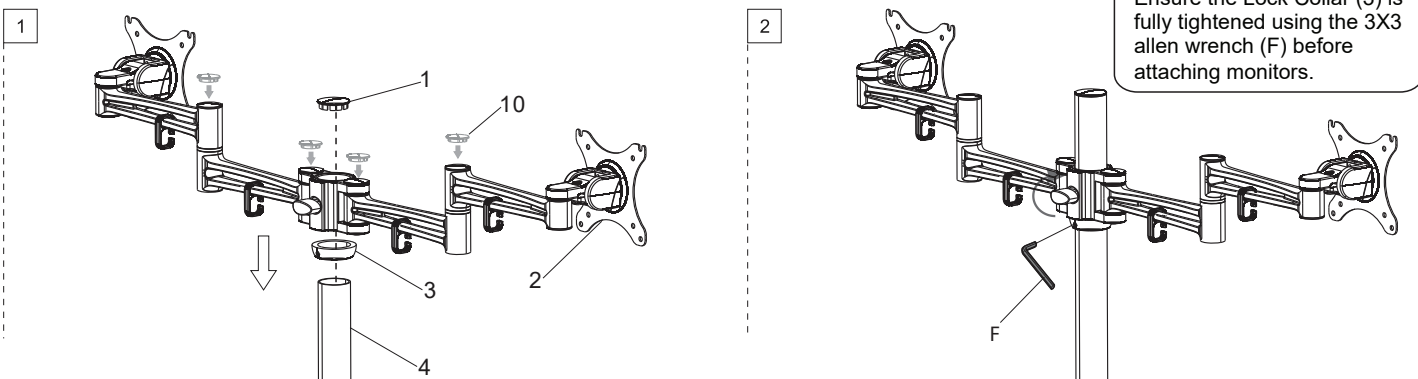
## STEP 1

Fitting the Bottom Support (6) onto the desktop



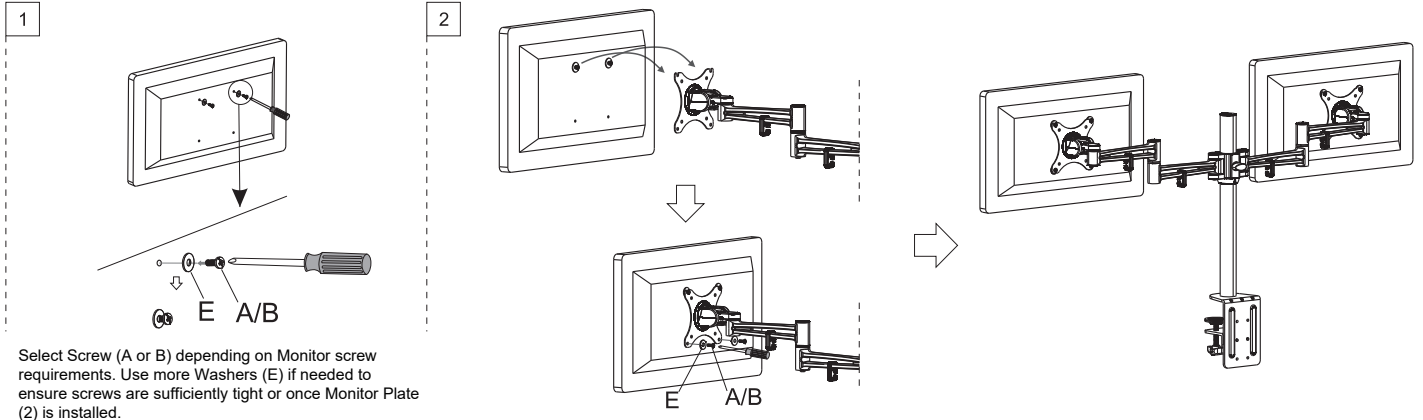
## STEP 2

Install Monitor Plate (2) and Lock Collar (3)



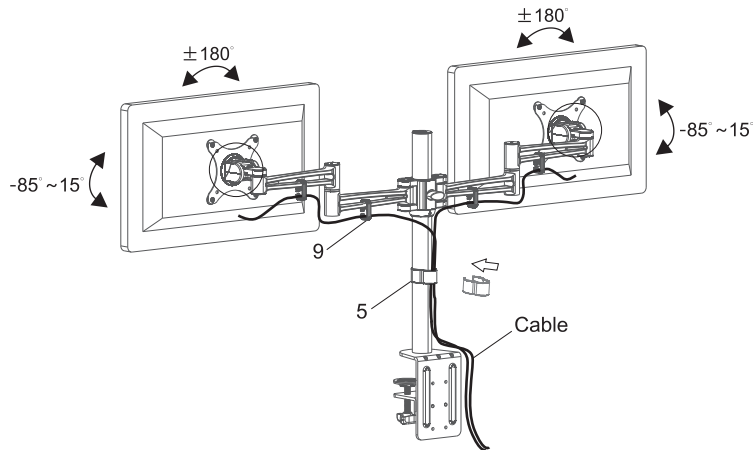
## STEP 3

### Attaching Monitor to the Monitor Plate (2)



## STEP 4

### Adjusting the monitors and installing cables



Adjust the tilt of the monitor using the provided 5X5 Allen Key (H)



## CAUTION

This product contains small items that could be a choking hazard if swallowed. Keep these items away from young children. Please ensure all instructions are read and completely understood before attempting installation. If you are unsure of any part of this installation, please contact a professional installer for assistance.

The desk or mounting surface must be capable of supporting the combined weight of the Monitor Stand and monitors otherwise the structure must be reinforced. To ensure optimal performance, check for any loose screws every two months.

This product was designed to be installed onto a desktop. Before installing, make sure the mount will support the combined load of the mount and display. Never exceed the maximum load capacity of 22 lb or this may result in product failure or personal injury.

This product is intended for indoor use only. Use of this product outdoors could lead to product failure or personal injury.